

*City of Union, Missouri*  
*Comprehensive Annual Financial Report*  
*For the Fiscal Year Ended June 30, 2019*



# CITY OF UNION, MISSOURI



## COMPREHENSIVE ANNUAL FINANCIAL REPORT

FOR THE FISCAL YEAR ENDED  
JUNE 30, 2019

***CITY OF UNION, MISSOURI***

---

***COMPREHENSIVE ANNUAL  
FINANCIAL REPORT***

---

FOR THE FISCAL YEAR ENDED  
JUNE 30, 2019

PREPARED BY THE FINANCE OFFICER

# CITY OF UNION, MISSOURI

## FINANCIAL REPORT

---

	<b>Page</b>
<b>SECTION I - INTRODUCTORY SECTION</b>	
Letter of Transmittal	i
Principal Officials	v
Organizational Chart	vi
Certificate of Achievement	vii
 <b>SECTION II - FINANCIAL SECTION</b>	
Independent Auditor's Report	1
Management's Discussion and Analysis	4
Basic Financial Statements:	
Government-wide Financial Statements:	
Statement of Net Position	15
Statement of Activities	16
Fund Financial Statements:	
Balance Sheet - Governmental Funds	17
Reconciliation of the Balance Sheet of Governmental Funds to the Statement of Net Position	18
Statement of Revenues, Expenditures, and Changes in Fund Balances - Governmental Funds	19
Reconciliation of the Statement of Revenues, Expenditures, and Changes in Fund Balances of Governmental Funds to the Statement of Activities	20
Statement of Net Position - Proprietary Fund	21
Statement of Revenues, Expenses, and Change in Net Position - Proprietary Fund	22
Statement of Cash Flows - Proprietary Fund	23
Statement of Fiduciary Net Position - Agency Fund	24
Notes to Financial Statements	25
Required Supplemental Information:	
Schedules of Revenues, Expenditures, and Changes in Fund Balances - Budget and Actual:	
General Fund	50
Park Fund - Special Revenue Fund	54
Transportation Tax Fund - Special Revenue Fund	55
Notes to Schedules of Revenues, Expenditures, and Changes in Fund Balances - Budget and Actual	56
Schedule of Changes in Net Pension Liability (Asset) and Related Ratios	57
Schedule of Pension Contributions	58
Other Supplemental Information:	
Combining Balance Sheet - Nonmajor Governmental Funds	60
Combining Statement of Revenues, Expenditures, and Changes in Fund Balances - Nonmajor Governmental Funds	61
Schedules of Revenues, Expenditures, and Changes in Fund Balances - Budget and Actual:	
Cemetery Fund - Special Revenue Fund	62
Stormwater Management Fund - Special Revenue Fund	63

# CITY OF UNION, MISSOURI

## FINANCIAL REPORT

---

	<b>Page</b>
<b>SECTION II - FINANCIAL SECTION (Continued)</b>	
Other Supplemental Information (Continued):	
Schedule of Revenues, Expenses, and Change in Net Position - Budget and Actual - Proprietary Fund	64
Statement of Changes in Assets and Liabilities - Agency Fund	65
 <b>SECTION III - STATISTICAL INFORMATION SECTION</b>	
Net Position by Component - Last Ten Fiscal Years	67
Change in Net Position - Last Ten Fiscal Years	68
Fund Balances of Governmental Funds - Last Ten Fiscal Years	70
Changes in Fund Balances - Governmental Funds - Last Ten Fiscal Years	71
Program Revenues by Functions/Programs - Last Ten Fiscal Years	72
Tax Revenues by Source - Governmental Funds - Last Ten Fiscal Years	73
Assessed and Estimated Actual Value of Taxable Property - Last Ten Fiscal Years	74
Property Tax Rates - Direct and All Overlapping Governments - Last Ten Fiscal Years	75
Principal Taxpayers - Current Year and Nine Years Ago	76
Property Tax Levies and Collections - Last Ten Fiscal Years	77
Sales Tax Rates, Direct and Overlapping Governments	78
Sales/Use Tax Revenue by Type	79
Ratios of Outstanding Debt by Type - Last Ten Fiscal Years	80
Direct and Overlapping Governmental Activities Debt	81
Computation of Legal Debt Margin - Last Ten Fiscal Years	82
Demographic and Economic Statistics - Last Ten Fiscal Years	83
Principal Employers - Current Year and Nine Years Ago	84
Full-time Equivalent City Government Employees by Functions/Programs - Last Ten Fiscal Years	85
Operating Indicators by Functions/Programs - Last Ten Fiscal Years	87
Capital Assets Statistics by Functions/Programs - Last Ten Fiscal Years	88

**SECTION I**  
**INTRODUCTORY SECTION**

---

THIS PAGE INTENTIONALLY LEFT BLANK





# City of Union

500 EAST LOCUST STREET  
UNION, MISSOURI 63084  
PHONE: 636-583-3600  
FAX: 636-583-4091

December 3, 2019

To the Honorable Mayor, Board  
of Aldermen, and Citizens  
of Union:

State law and local ordinances require that all general-purpose local governments publish a complete set of financial statements presented in conformance with U.S. Generally Accepted Accounting Principles (GAAP) and audited in accordance with U.S. generally accepted auditing standards by a firm of licensed certified public accountants. Pursuant to the requirement, we hereby issue the comprehensive annual financial report (CAFR) of the City of Union, Missouri (the City) for the fiscal year ended June 30, 2019.

Management assumes full responsibility for the completeness and reliability of all information presented in this report. To provide reasonable basis for making these representations, management of the City has established a comprehensive internal control framework that is designed to protect the City's assets from loss, theft, or misuse and to compile sufficient reliable information for the preparation of the City's financial statements in conformance with GAAP. Because the cost of internal controls should not outweigh their benefits, the City's comprehensive framework of internal controls has been designed to provide reasonable rather than absolute assurance that the financial statements will be free from material misstatement. As management, we assert that, to the best of our knowledge and belief, this financial report is complete and reliable in all material respects.

The City's financial statements have been audited by Hochschild, Bloom & Company LLP, a firm of licensed certified public accountants. The goal of this independent audit was to provide reasonable assurance that the basic financial statements of the City for the fiscal year ended June 30, 2019, are free of material misstatements. The independent audit involved: examining, on a test basis, evidence supporting the amounts and disclosures in the basic financial statements; assessing the accounting principles used and significant estimates made by management; and evaluating the overall basic financial statement presentation. The independent auditors concluded, based upon its audit, that there was a reasonable basis for rendering an unmodified opinion that the City's financial statements for the fiscal year ended June 30, 2019, are fairly presented in conformity with GAAP. The independent auditors' report is presented as the first component of the financial section of this report.

GAAP requires that management provide a narrative introduction, overview, and analysis to accompany the basic financial statements in the form of Management's Discussion and Analysis (MD&A). This letter of transmittal is designed to compliment the MD&A and should be read in conjunction with it. The City's MD&A can be found immediately following the independent auditors' report.



## **Profile of the Government**

Incorporated in 1888, the City is the county seat and the second largest City in Franklin County. The City covers approximately 8 square miles. The City's population grew 31.6% over the last decade, increasing from 7,757 in 2000 to 10,204 in 2010. The City of Union has the most growth in Franklin County. The City is located 45 minutes southwest of the City of St. Louis, Missouri. The City is located in Franklin County with easy access to Interstate Highway 44.

The City is a fourth-class city and is governed under the Mayor – Aldermen – City Administrator form of government. The legislative body is comprised of the Mayor and eight-member Board of Aldermen. Two aldermen are elected from each of the City's four wards to serve two-year terms, one half of which expires annually. The Mayor is elected to serve a four-year term.

The City provides its citizens with typical services, such as street maintenance and construction, police protection, code enforcement, engineering and planning, facilities inspections, and parks and recreation. These services are financed from general revenues of the City. The City also provides water, sewer, and sanitation services derived from revenues from user fees.

The annual budget serves as a foundation for the City's financial planning and control. All of the departments of the City are required to submit requests for appropriation to the Finance Officer who uses these requests as a starting point for development of a proposed budget. The Finance Officer and City Administrator present a proposed budget to the Mayor and Board of Aldermen who hold work sessions prior to adopting a budget by June 30. The budget is prepared by fund, broken down further by department, programs, or projects within the department, then object of expenditures within programs and finally, line items within the objects. Transfers of appropriations between departments, however, require approval of the board. Budget-to-actual comparisons are provided in this report for each individual governmental fund for which an appropriate annual budget has been adopted. For the General Fund, Park Fund, and Transportation Tax Fund, the comparison is presented on required supplemental information. For other governmental funds that have an adopted budget, comparison schedules are found in other supplemental information.

## **Local Economy**

Once a sleepy rural town 45 minutes southwest of St. Louis, over the past 10 years the City of Union has experienced unprecedented growth in the residential, commercial, and industrial sectors providing a diversified and stable economy. With the addition of a large number of homes, commercial growth has occurred throughout the City.

Residential growth has been spurred by a low cost of living, proximity to St. Louis County and overall quality of life. In addition to an award-winning school district, Union is also home to East Central College, a community college of approximately 4,000 students. The college also offers continuing education courses and the cultural opportunities (opera, theatre, art shows, athletics, etc.) of a much larger community.

Since its beginning, Union has hosted the seat of Franklin County Government and for many years the 20<sup>th</sup> Judicial Court Circuit. During office hours, the downtown is bustling with government and court activity. Commercial growth has also occurred due to Franklin County Government investing over \$12 million in the downtown area within the past 10 years with the construction of a Government Center and Judicial Center.

The City continues to experience strong residential, industrial, and commercial growth. During the previous fiscal year there were 57 permits issued for single family dwellings, 1 new commercial project, and 1 new institutional project. An additional 12 acres of ground was annexed into the City adjacent to Union Corporate Center to facilitate the new location for American Welding Academy. In addition, the City is working to develop the last remaining sites in Union Corporate Center through the expansion of existing businesses and development of new industrial facilities. The focus of the Community Development Department remains job creation and population growth, in order to address workforce development and build a thriving community. By partnering with East Central College, the Union R-XI School District, and the American Welding Academy, the objective is to offer the training programs necessary to supply the skilled labor force prepared to fill the jobs available in local industry.

Between 2007 and 2010, the City has experienced a slow but steady decrease in sales tax of approximately 2%. For the year ended June 30, 2019, the sales tax increased approximately 0.9%. The City is confident and has evaluated its position and has made certain changes in its budget. In addition, the City maintains a conservative approach in spending and anticipates some economic recovery in the next fiscal year or two.

### **Major Initiatives**

Again in 2018-2019, the City continued to improve its facilities and infrastructure to serve its citizens. This includes the following projects:

The City started construction of the new City Hall. This project is scheduled to be completed in 2020.

The Springfield Road project provides shoulders, sidewalks and resurfacing of the roadway. This project was completed in 2018.

The Denmark Road Phase project provides shoulders, sidewalks, roundabout and resurfacing of the roadway. This project was completed in 2018.

Repairs to various curb, gutter and sidewalk maintenance around the City.

### **Long-term Financial Planning**

The City's new five-year capital improvement plan, comprehensive plan, and water study are completed. These plans will be helpful with long range planning purposes to accomplish goals and objectives for the City. The City completed work on a five-year capital improvement plan in 2015. This plan will help project costs and estimate revenues for the next five years. It enables the City to prioritize and prepare for its future capital needs more effectively.

The City adopted a Fund Balance policy on May 9, 2011 in accordance with GASB 54. The City's primary objective is to maintain a prudent level of financial resources to protect against reducing service levels, raising taxes and fees due to temporary revenue shortfalls or unexpected expenditures. The policy states the City will maintain a reserve level with a minimum 25% of projected annual operating expenditures in the General Fund. As of June 30, 2019, the unreserved fund balance in the General Fund is in compliance with the City's policy. City management also tries to maintain a 25% reserve in its enterprise funds for future debt service requirements. This reserve is not set by ordinance/resolution.

### **Awards and Acknowledgments**

The Government Finance Officers Association (GFOA) awarded a Certificate of Achievement for Excellence in financial reporting to the City for its Comprehensive Annual Financial Report for the fiscal year ended June 30, 2019. This award has been received since 2009. In order to be awarded a Certificate of Achievement, a government must publish an easily readable and efficiently organized CAFR. This report must satisfy both GAAP and applicable legal requirements.

The Certificate of Achievement is valid for a period of one year only. We believe that our current CAFR continues to meet the Certificate of Achievement Program's requirements and we are submitting it to the GFOA to determine its eligibility for another Certificate of Achievement.

The preparation of this report could not have been accomplished without the efficient and dedicated services of the entire staff of the various departments of the City. We would like to express our appreciation to all members of the various departments who assisted and contributed to the preparation.

We would also like to thank our auditors, Hochschild, Bloom & Company LLP, for their help in formulating this report. Our sincere gratitude is extended to you for your interest and support in planning and conducting the financial operations of the City in a responsible and progressive manner.

Respectively submitted,



Russell Rost  
City Administrator



Heather Keith  
Finance Officer

# **CITY OF UNION, MISSOURI**

---

## **INTRODUCTORY**

### **PRINCIPAL OFFICIALS**

#### **MAYOR**

Rodney (Rod) J. Tappe

#### **WARD 1**

Robert Schmuke  
Brian Pickard

#### **WARD 2**

Bill Isgriggs  
Robert Marquart

#### **WARD 3**

Paul Arand  
Dennis Soetebier

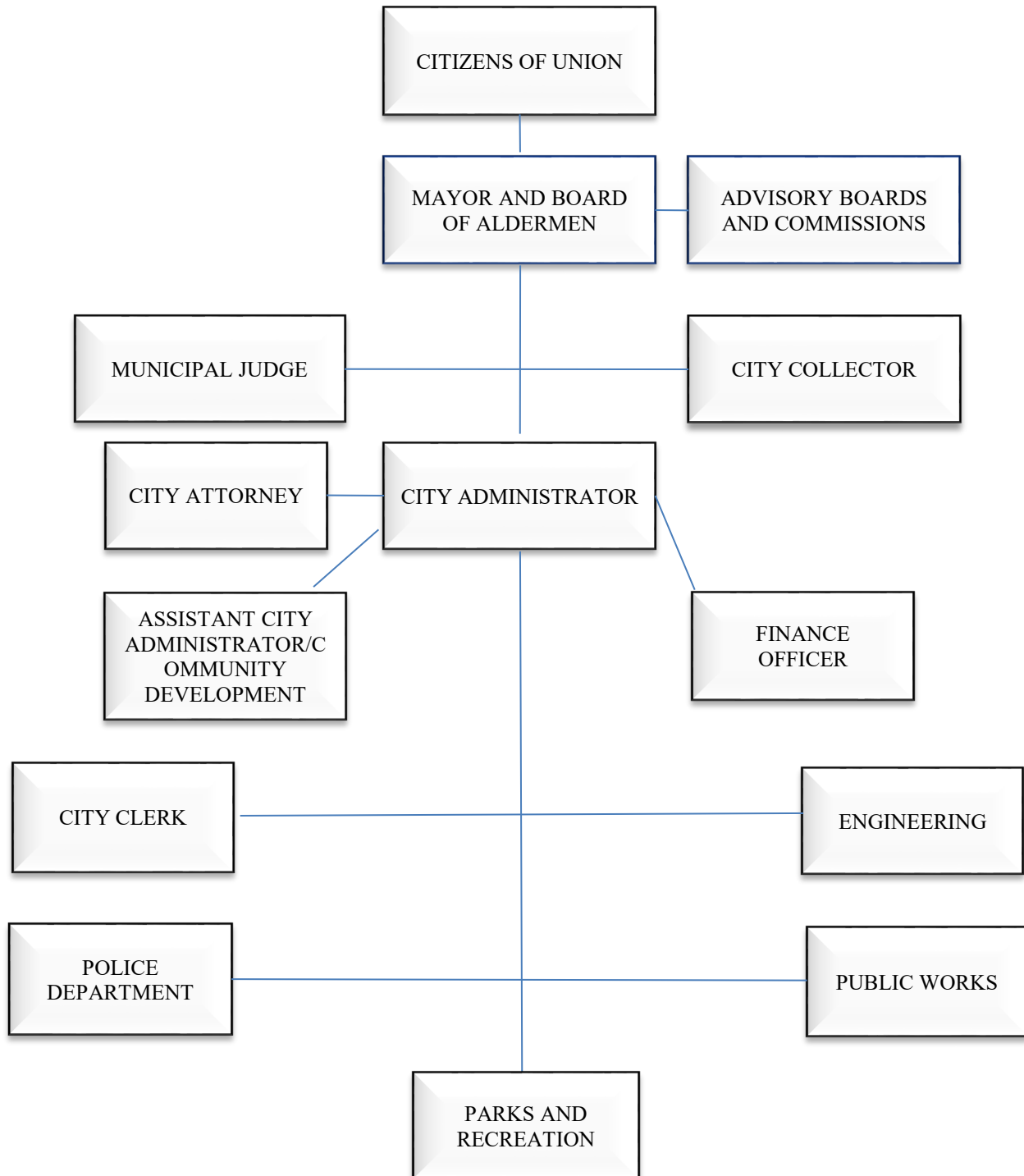
#### **WARD 4**

Vicki Jo Hooper  
Karen Erwin

### **OTHER CITY OFFICIALS**

Russell Rost - City Administrator  
Heather Keith - Finance Officer  
Jonita Copeland - City Clerk  
Jonathan Zimmermann - City Engineer  
Andrew Parker - Chief of Police  
Kala Stephens - Public Works Director  
James Schmieder - Economic Development Director/Assistant City Administrator  
Vacant - Parks and Recreation Director  
Russell Rost - Emergency Management Director  
Matthew Schroeder - City Attorney  
Eric Schmuke - City Collector  
A. David Arand - Municipal Judge

**ORGANIZATIONAL CHART**





Government Finance Officers Association

**Certificate of  
Achievement  
for Excellence  
in Financial  
Reporting**

Presented to

**City of Union  
Missouri**

For its Comprehensive Annual  
Financial Report  
for the Fiscal Year Ended

**June 30, 2018**

*Christopher P. Morill*

Executive Director/CEO

**SECTION II**  
**FINANCIAL SECTION**

---





**Hochschild, Bloom & Company LLP**  
Certified Public Accountants  
Consultants and Advisors

## **INDEPENDENT AUDITOR'S REPORT**

December 3, 2019

Honorable Mayor and the Board of Aldermen  
**CITY OF UNION, MISSOURI**

### **REPORT ON THE FINANCIAL STATEMENTS**

We have audited the accompanying financial statements of the governmental activities, the business-type activities, each major fund, and the aggregate remaining fund information of the **CITY OF UNION, MISSOURI** (the City), as of and for the year ended June 30, 2019, and the related notes to the financial statements, which collectively comprise the City's basic financial statements as listed in the table of contents.

#### **Management's Responsibility for the Financial Statements**

Management is responsible for the preparation and fair presentation of these financial statements in accordance with accounting principles generally accepted in the United States of America; this includes the design, implementation, and maintenance of internal control relevant to the preparation and fair presentation of financial statements that are free from material misstatement, whether due to fraud or error.

#### **Auditor's Responsibility**

Our responsibility is to express opinions on these financial statements based on our audit. We conducted our audit in accordance with auditing standards generally accepted in the United States of America and the standards applicable to financial audits contained in *Government Auditing Standards*, issued by the Comptroller General of the United States. Those standards require that we plan and perform the audit to obtain reasonable assurance about whether the financial statements are free of material misstatement.

□ 15450 South Outer Forty Road, Suite 135, Chesterfield, Missouri 63017-2066, 636-532-9525, Fax 636-532-9055

□ 1000 Washington Square, P. O. Box 1457, Washington, Missouri 63090-8457, 636-239-4785, Fax 636-239-5448

[www.hbclp.com](http://www.hbclp.com)

 **PrimeGlobal** | An Association of  
Independent Accounting Firms

An audit involves performing procedures to obtain audit evidence about the amounts and disclosures in the financial statements. The procedures selected depend on the auditor's judgment, including the assessment of the risks of material misstatement of the financial statements, whether due to fraud or error. In making those risk assessments, the auditor considers internal control relevant to the City's preparation and fair presentation of the financial statements in order to design audit procedures that are appropriate in the circumstances, but not for the purpose of expressing an opinion on the effectiveness of the City's internal control. Accordingly, we express no such opinion. An audit also includes evaluating the appropriateness of accounting policies used and the reasonableness of significant accounting estimates made by management, as well as evaluating the overall presentation of the financial statements.

We believe that the audit evidence we have obtained is sufficient and appropriate to provide a basis for our audit opinions.

## **Opinions**

In our opinion, the financial statements referred to above present fairly, in all material respects, the respective financial position of the governmental activities, the business-type activities, each major fund, and the aggregate remaining fund information of the City as of June 30, 2019, and the respective changes in financial position and, where applicable, cash flows thereof for the year then ended in accordance with accounting principles generally accepted in the United States of America.

## **Other Matters**

### *Required Supplemental Information*

Accounting principles generally accepted in the United States of America require that the management's discussion and analysis, and required supplemental information, as listed in the table of contents, be presented to supplement the basic financial statements. Such information, although not a part of the basic financial statements, is required by the Governmental Accounting Standards Board who considers it to be an essential part of financial reporting for placing the basic financial statements in an appropriate operational, economic, or historical context. We have applied certain limited procedures to the required supplemental information in accordance with auditing standards generally accepted in the United States of America, which consisted of inquiries of management about the methods of preparing the information and comparing the information for consistency with management's responses to our inquiries, the basic financial statements, and other knowledge we obtained during our audit of the basic financial statements. We do not express an opinion or provide any assurance on the information because the limited procedures do not provide us with sufficient evidence to express an opinion or provide any assurance.

### *Other Information*

Our audit was conducted for the purpose of forming opinions on the financial statements that collectively comprise the City's basic financial statements. The other supplemental information and introductory and statistical sections, as listed in the table of contents, are presented for purposes of additional analysis and are not a required part of the basic financial statements.

The other supplemental information is the responsibility of management and was derived from and relates directly to the underlying accounting and other records used to prepare the basic financial statements. Such information has been subjected to the auditing procedures applied in the audit of the basic financial statements and certain additional procedures, including comparing and reconciling such infor-

mation directly to the underlying accounting and other records used to prepare the basic financial statements or to the basic financial statements themselves, and other additional procedures in accordance with auditing standards generally accepted in the United States of America. In our opinion, the other supplemental information is fairly stated, in all material respects, in relation to the basic financial statements as a whole.

The introductory and statistical sections have not been subjected to the auditing procedures applied in the audit of the basic financial statements and, accordingly, we do not express an opinion or provide any assurance on them.

#### **OTHER REPORTING REQUIRED BY *GOVERNMENT AUDITING STANDARDS***

In accordance with *Government Auditing Standards*, we have also issued our report dated December 3, 2019 on our consideration of the City's internal control over financial reporting and on our tests of its compliance with certain provisions of laws, regulations, contracts, and grant agreements and other matters. The purpose of that report is to describe the scope of our testing of internal control over financial reporting and compliance and the results of that testing, and not to provide an opinion on internal control over financial reporting or on compliance. That report is an integral part of an audit performed in accordance with *Government Auditing Standards* in considering the City's internal control over financial reporting and compliance.

*Hochschild, Bloom & Company LLP*

**CERTIFIED PUBLIC ACCOUNTANTS**

*Washington, Missouri*

# CITY OF UNION, MISSOURI

## MANAGEMENT'S DISCUSSION AND ANALYSIS

### FOR THE YEAR ENDED JUNE 30, 2019

---

This section of the City of Union, Missouri (the City) annual financial report presents our review of the City's financial performance during the fiscal year ended June 30, 2019. We encourage readers to consider the information presented here in conjunction with the transmittal letter at the front of this report and the City's financial statements, which follows this section.

#### FINANCIAL HIGHLIGHTS

- On a government-wide basis the assets and deferred outflows of resources of the City exceeded its liabilities and deferred inflows of resources for the most recent fiscal year by \$64,748,501. The City has unrestricted net position totaling \$12,428,173.
- General revenues for governmental activities were \$6,690,095 which included \$6,472,091 (96.7%) in sales, property, franchise, and other taxes. Property taxes accounted for \$1,348,324 (20.2%) of general revenues.
- Expenses from the various functions of governmental activities was \$9,405,639. General government was \$2,387,889 (25.4%), public safety was \$1,919,394 (20.4%), street was \$2,203,031 (23.4%), refuse collection and other was \$809,167 (8.6%), culture and recreation was \$1,479,610 (15.7%), planning and development was \$379,130 (4.0%), and building maintenance was \$135,363 (1.4%).
- As of the close of the current fiscal year, the City's governmental funds reported combined ending fund balances of \$7,516,065. Of this amount (\$960,116) is unassigned, \$2,561,294 is nonspendable, \$892,233 is restricted, \$3,524,000 is committed, and \$1,498,654 is assigned.
- At the end of the current fiscal year, fund balance for the General Fund was \$8,954,048 or 112.8% of total General Fund expenditures. Of this amount \$1,498,654 is assigned, \$1,438,068 is unassigned, \$2,493,326 is nonspendable, and \$3,524,000 is committed.
- The City's total debt decreased \$734,494 during the current fiscal year.

#### OVERVIEW OF THE FINANCIAL STATEMENTS

This MD&A is intended to serve as an introduction to the City's basic financial statements. The City's basic financial statements consist of three components: 1) government-wide financial statements, 2) fund financial statements, and 3) notes to the basic financial statements. This report also contains required supplemental information and other supplemental information.

**Government-wide financial statements.** The government-wide financial statements are designed to provide readers with a broad overview of the City's finances, in a manner similar to a private-sector business.

The statement of net position presents information on all of the City's assets, deferred outflows, liabilities, and deferred inflows, with the difference reported as net position. Over time, increases or decreases in net position may serve as a useful indicator of whether the financial position of the City is improving or deteriorating.

# CITY OF UNION, MISSOURI

## MANAGEMENT'S DISCUSSION AND ANALYSIS

### FOR THE YEAR ENDED JUNE 30, 2019

---

The statement of activities presents information showing how the City's net position changed during the most recent fiscal year. All changes in net position are reported as soon as the underlying event giving rise to the change occurs, regardless of the timing of related cash flows. Thus, revenues and expenses are reported in this statement for some items that will only result in cash flows in future fiscal periods (e.g., uncollected taxes and accrued vacation leave).

The government-wide financial statements distinguish functions of the City that are principally supported by taxes and intergovernmental revenues (governmental activities) from other functions that are intended to recover all or a significant portion of their costs through user fees and charges (business-type activities). The governmental activities of the City include general government, public safety, street, refuse collection and other, culture and recreation, planning and development, and building maintenance. The business-type activities of the City include water and sewer.

**Fund financial statements.** A fund is a grouping of related accounts that is used to maintain control over resources that have been segregated for specific activities or objectives. The City, like other state and local governments, uses fund accounting to ensure and demonstrate compliance with finance-related legal requirements. All of the funds of the City can be divided into two categories: governmental funds and proprietary funds. It should be noted that the City does not have any fiduciary funds.

**Governmental funds.** Governmental funds are used to account for essentially the same functions reported as governmental activities in the government-wide financial statements. However, unlike the government-wide financial statements, governmental funds financial statements focus on near-term inflows and outflows of expendable resources as well as on balances of expendable resources available at the end of the fiscal year. Such information may be useful in evaluating the City's near-term financing requirements.

Because the focus of governmental funds is narrower than that of the government-wide financial statements, it is useful to compare the information presented for governmental funds with similar information presented for governmental activities in the government-wide financial statements. By doing so, readers may better understand the long-term impact of the City's near-term financial decisions. Both the governmental funds balance sheet and the governmental funds statement of revenues, expenditures, and changes in fund balances provide a reconciliation to facilitate this comparison between governmental funds and the government-wide governmental activities.

The City maintains several individual governmental funds. Information is presented separately in the governmental funds balance sheet and in the governmental funds statement of revenues, expenditures, and changes in fund balances for the General Fund, Park Fund, and Transportation Tax Fund, all of which are considered to be major funds. Data from the other governmental funds are combined into a single, aggregated presentation called "other governmental funds". Individual fund data for each of these nonmajor governmental funds is provided in the form of combining statements in the other supplemental information section in this report.

The City adopts an annual appropriated budget for all governmental funds. Budgetary comparison statements have been provided for all budgeted funds to demonstrate legal compliance with the respective adopted budget.

**Proprietary funds.** The City maintains two different types of proprietary funds. Enterprise Funds are used to report the same functions presented as business-type activities in the government-wide financial statements.

**CITY OF UNION, MISSOURI**  
**MANAGEMENT'S DISCUSSION AND ANALYSIS**  
**FOR THE YEAR ENDED JUNE 30, 2019**

---

The City uses Enterprise Funds to account for its water and sewer operations. Proprietary funds provide the same type of information as the government-wide financial statements, only in more detail. The proprietary fund financial statements provide separate information for the water and sewer operations.

**Notes to financial statements.** The notes provide additional information that is essential to a full understanding of the data provided in the government-wide and fund financial statements.

**Required supplemental information.** In addition to the basic financial statements and accompanying notes, certain required and other supplemental information can be found after the basic financial statements.

**GOVERNMENT-WIDE FINANCIAL ANALYSIS - FINANCIAL ANALYSIS OF THE CITY AS A WHOLE**

The City presents its financial statements under the reporting model required by the Governmental Accounting Standards Board Statement No. 34 (GASB 34), *Basic Financial Statements - and Management's Discussion and Analysis - for State and Local Governments*. Therefore, a comparative analysis of government-wide data is also included in this report.

As noted earlier, net position may serve over time as a useful indicator of a government's financial position. In the case of the City, the net position of \$64,748,501 increased in 2019 by approximately 1.2% as compared to the previous year.

The largest portion of the City's net position, \$48,311,954 in 2019 (an increase of approximately 0.2% from 2018) reflects its investment in capital assets (e.g., land, buildings, machinery and equipment, and infrastructure); less any related debt used to acquire those assets that is still outstanding. The City uses these capital assets to provide services to citizens. Consequently, these assets are not available for future spending. Although the City's investment in its capital assets is reported net of related debt, it should be noted that the resources needed to repay this debt must be provided from other sources, since the capital assets themselves cannot be used to liquidate these liabilities.

A condensed version of the statement of net position follows:

**CITY OF UNION, MISSOURI**  
**MANAGEMENT'S DISCUSSION AND ANALYSIS**  
**FOR THE YEAR ENDED JUNE 30, 2019**

	June 30					
	Governmental Activities		Business-type Activities		Total	
	2019	2018	2019	2018	2019	2018
<b>ASSETS</b>						
Current and other assets	\$ 9,614,857	9,797,001	7,864,215	7,327,284	17,479,072	17,124,285
Capital assets, net	<u>33,419,818</u>	<u>33,845,714</u>	<u>22,381,809</u>	<u>22,577,985</u>	<u>55,801,627</u>	<u>56,423,699</u>
Total Assets	<u>43,034,675</u>	<u>43,642,715</u>	<u>30,246,024</u>	<u>29,905,269</u>	<u>73,280,699</u>	<u>73,547,984</u>
<b>DEFERRED OUTFLOWS OF RESOURCES</b>	<u>658,694</u>	<u>587,856</u>	<u>213,869</u>	<u>228,420</u>	<u>872,563</u>	<u>816,276</u>
<b>LIABILITIES</b>						
Long-term liabilities	2,588,620	2,813,074	4,371,710	4,893,361	6,960,330	7,706,435
Other liabilities	<u>739,140</u>	<u>958,719</u>	<u>916,355</u>	<u>850,230</u>	<u>1,655,495</u>	<u>1,808,949</u>
Total Liabilities	<u>3,327,760</u>	<u>3,771,793</u>	<u>5,288,065</u>	<u>5,743,591</u>	<u>8,615,825</u>	<u>9,515,384</u>
<b>DEFERRED INFLOWS OF RESOURCES</b>	<u>738,733</u>	<u>832,802</u>	<u>50,203</u>	<u>55,068</u>	<u>788,936</u>	<u>887,870</u>
<b>NET POSITION</b>						
Net investment in capital assets	30,650,931	30,856,813	17,661,023	17,378,212	48,311,954	48,235,025
Restricted	2,436,913	2,290,798	1,571,461	1,508,481	4,008,374	3,799,279
Unrestricted	<u>6,539,032</u>	<u>6,478,365</u>	<u>5,889,141</u>	<u>5,448,337</u>	<u>12,428,173</u>	<u>11,926,702</u>
Total Net Position	<u>\$39,626,876</u>	<u>39,625,976</u>	<u>25,121,625</u>	<u>24,335,030</u>	<u>64,748,501</u>	<u>63,961,006</u>

An additional portion of the City's net position, \$4,008,374 in 2019, represents resources that are subject to external restrictions on how they may be used. External restrictions include those imposed by grantors, contributors, regulations of other governments, or restrictions imposed by law through constitutional provisions or legislation.

The remaining category of the City's net position represents an unrestricted net position balance of \$12,428,173 in 2019 which may be used to meet the City's ongoing obligations to citizens and creditors.



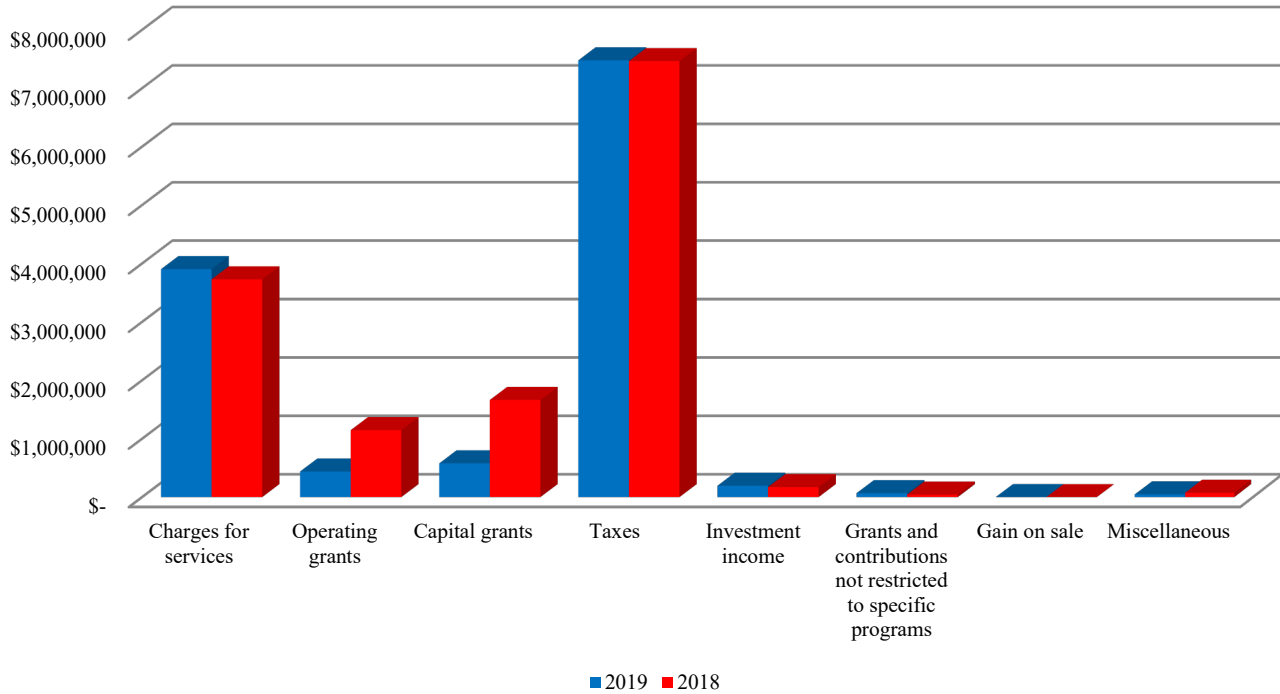
**CITY OF UNION, MISSOURI**  
**MANAGEMENT'S DISCUSSION AND ANALYSIS**  
**FOR THE YEAR ENDED JUNE 30, 2019**

A condensed version of the statement of activities follows:

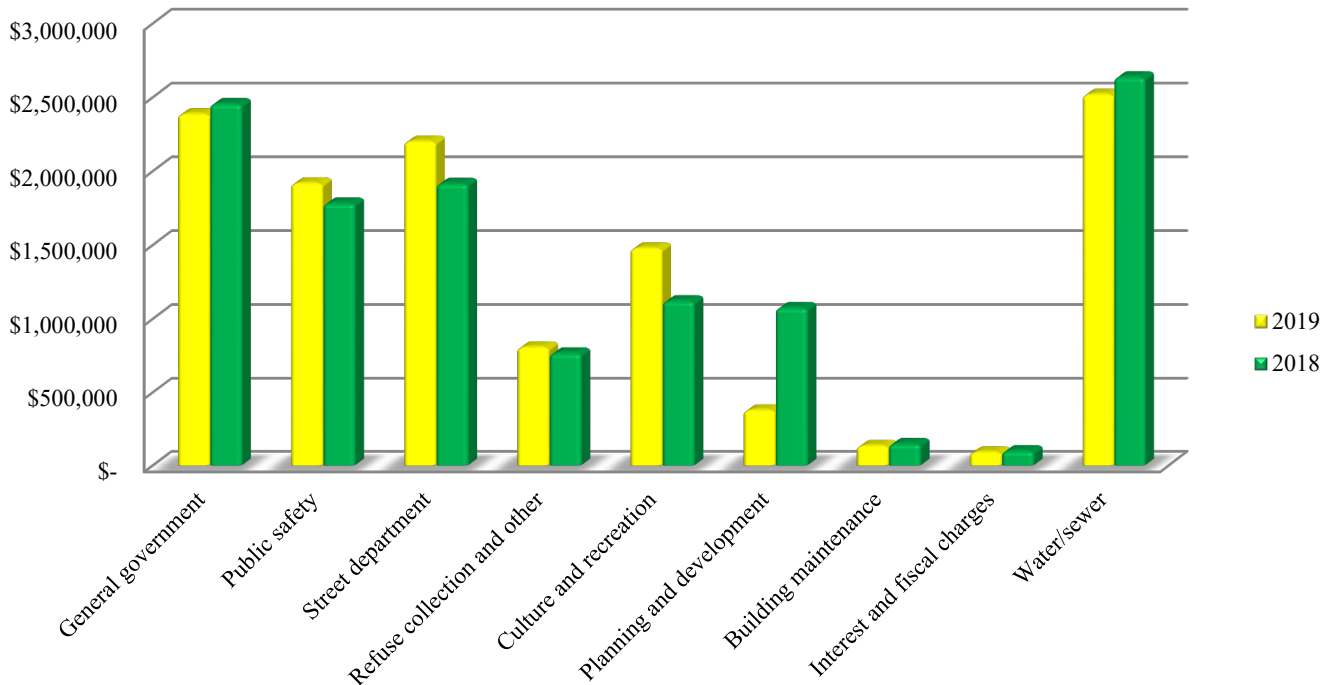
	<b>For The Years Ended June 30</b>					
	<b>Governmental</b>		<b>Business-type</b>		<b>Total</b>	
	<b>Activities</b>		<b>Activities</b>			
	<b>2019</b>	<b>2018</b>	<b>2019</b>	<b>2018</b>	<b>2019</b>	<b>2018</b>
<b>REVENUES</b>						
Program revenues:						
Charges for services	\$ 1,801,071	1,599,431	2,102,537	2,129,177	3,903,608	3,728,608
Operating grants and contributions	439,200	1,147,550	-	-	439,200	1,147,550
Capital grants and contributions	476,173	1,664,075	102,368	-	578,541	1,664,075
General revenues:						
Taxes	6,472,091	6,466,364	1,006,889	998,241	7,478,980	7,464,605
Investment income	132,959	126,383	62,797	45,071	195,756	171,454
Grants and contributions not restricted to specific programs	68,420	-	-	44,528	68,420	44,528
Gain on sale of capital assets	710	240	-	-	710	240
Miscellaneous	15,915	44,994	32,442	30,419	48,357	75,413
Total Revenues	<u>9,406,539</u>	<u>11,049,037</u>	<u>3,307,033</u>	<u>3,247,436</u>	<u>12,713,572</u>	<u>14,296,473</u>
<b>EXPENSES</b>						
General government	2,387,889	2,457,685	-	-	2,387,889	2,457,685
Public safety	1,919,394	1,784,002	-	-	1,919,394	1,784,002
Street department	2,203,031	1,917,288	-	-	2,203,031	1,917,288
Refuse collection and other	809,167	768,487	-	-	809,167	768,487
Culture and recreation	1,479,610	1,121,841	-	-	1,479,610	1,121,841
Planning and development	379,130	1,075,965	-	-	379,130	1,075,965
Building maintenance	135,363	149,756	-	-	135,363	149,756
Water/sewer	-	-	2,520,438	2,638,234	2,520,438	2,638,234
Interest and fiscal charges	92,055	100,566	-	-	92,055	100,566
Total Expenses	<u>9,405,639</u>	<u>9,375,590</u>	<u>2,520,438</u>	<u>2,638,234</u>	<u>11,926,077</u>	<u>12,013,824</u>
<b>CHANGES IN NET POSITION</b>	900	1,673,447	786,595	609,202	787,495	2,282,649
NET POSITION, JULY 1	<u>39,625,976</u>	<u>37,952,529</u>	<u>24,335,030</u>	<u>23,725,828</u>	<u>63,961,006</u>	<u>61,678,357</u>
NET POSITION, JUNE 30	<u>\$39,626,876</u>	<u>39,625,976</u>	<u>25,121,625</u>	<u>24,335,030</u>	<u>64,748,501</u>	<u>63,961,006</u>

**CITY OF UNION, MISSOURI**  
**MANAGEMENT'S DISCUSSION AND ANALYSIS**  
**FOR THE YEAR ENDED JUNE 30, 2019**

**Revenues by Source Comparison**



**Expenses by Function Comparison**

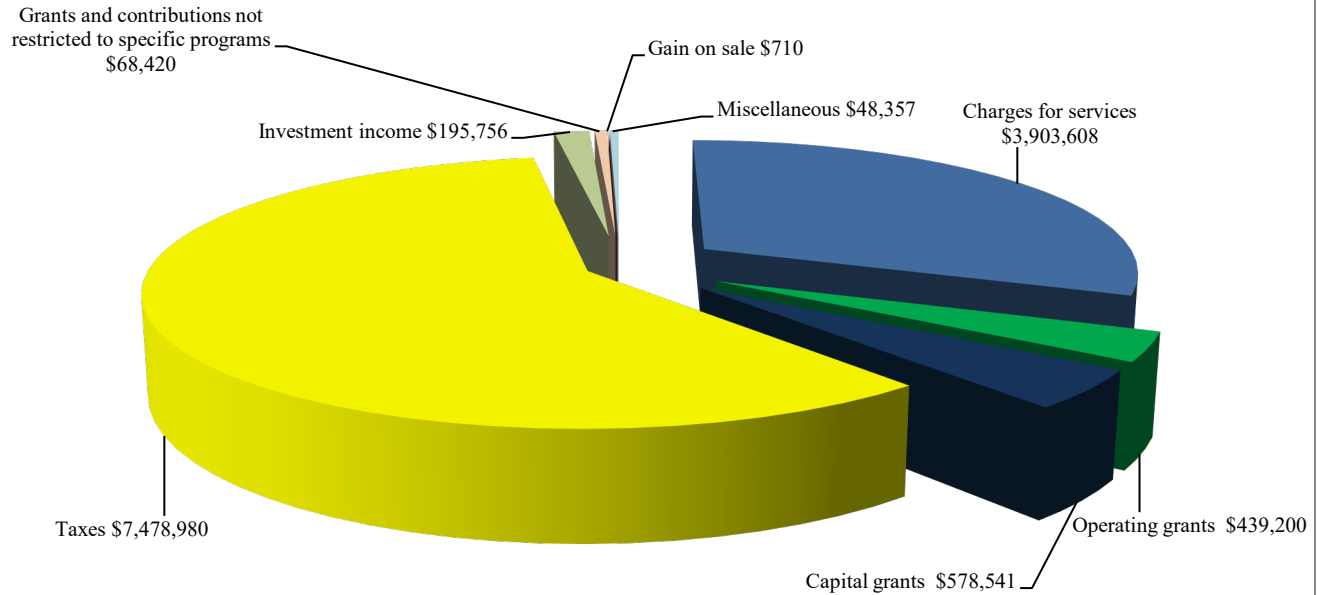


# CITY OF UNION, MISSOURI

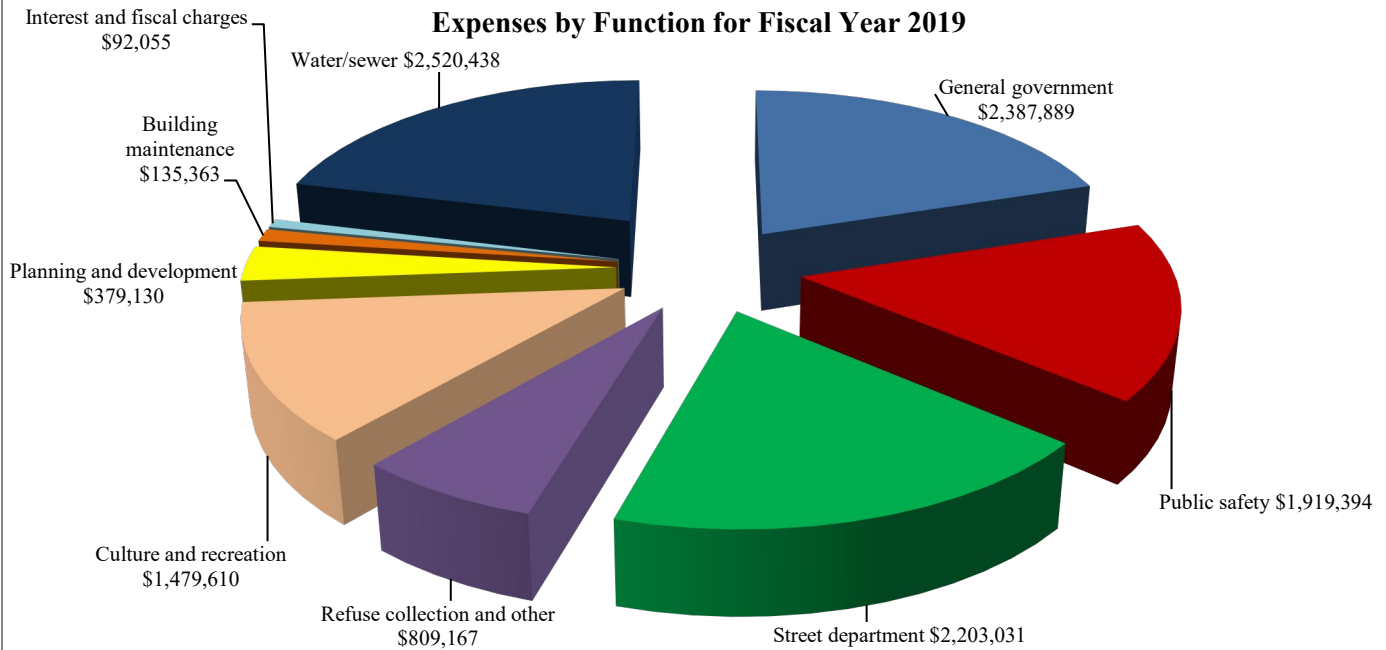
## MANAGEMENT'S DISCUSSION AND ANALYSIS

### FOR THE YEAR ENDED JUNE 30, 2019

**Revenues by Sources for Fiscal Year 2019**



**Expenses by Function for Fiscal Year 2019**



# CITY OF UNION, MISSOURI

## MANAGEMENT'S DISCUSSION AND ANALYSIS

### FOR THE YEAR ENDED JUNE 30, 2019

---

**Changes in net position.** In 2019 the City's total revenues on the government-wide basis was \$12,713,572, a decrease of \$1,582,901 as compared to 2018.

While the total revenues decreased \$1,582,901 (11.1%) from last year, total expenses decreased by \$87,747 (0.7%) from last year. The decrease in revenues was due to the decrease in operating and capital grants. The decrease in expenses was due to overall decrease in general government, planning and development, and water/sewer. As a result, the change in net position had an increase of \$787,495 (1.2%).

## FINANCIAL ANALYSIS OF THE CITY'S FUNDS

As noted earlier, the City uses fund accounting to ensure and demonstrate compliance with finance-related legal requirements. You can think of the City's net position (the difference between assets, deferred outflows, liabilities, and deferred inflows) as one way to measure the City's financial health or financial position. Over time, increases or decreases in the City's net position are one indicator of whether its financial health is improving or deteriorating. You will need to consider other nonfinancial factors such as changes in the City's property tax base, the amount of snow during the winter seasons, etc., to assess the overall health of the City.

**General Fund.** At the end of year 2019, the unassigned fund balance of the General Fund was \$1,438,068 while the total fund balance was \$8,954,048. As a measure of the General Fund liquidity, it may be useful to compare both unassigned fund balance and total fund balance to total fund expenditures and transfer out. Unassigned fund balance represents (16.3%) of total General Fund expenditures and transfers out of \$885,575, while total fund balance represents (101.5%) of total General Fund expenditures and transfers out.

The fund balance in the City's General Fund decreased by \$31,311 (0.3%) from the prior year fund balance. The changes of the current year's fund balance are mainly due to construction of the future City Hall.

**Other major governmental funds.** Changes in fund balances for other major governmental funds can be described as follows:

- Park Fund increased by \$91,877. This increase was mainly due to lower expenditures because of the completion of the Veterans Memorial Park in 2018. At the end of June 30, 2019, the nonspendable fund balance was \$67,968, the restricted fund balance was \$1,113, the unassigned fund balance was a negative \$2,398,184, and total fund balance was negative \$2,329,103.
- Transportation Tax Fund increased by \$33,125. At the end of June 30, 2019, the restricted fund balance and total fund balance was \$803,895.

**Proprietary funds.** Changes in net position for the major proprietary funds can be described as follows:

- Water and Sewer Fund increased \$786,595. This increase was a result of increasing revenues. At the end of June 30, 2019, total net position was \$25,121,625.

**CITY OF UNION, MISSOURI**  
**MANAGEMENT'S DISCUSSION AND ANALYSIS**  
**FOR THE YEAR ENDED JUNE 30, 2019**

**GENERAL FUND BUDGETARY HIGHLIGHTS**

Difference between the original and the final amended budget of the City's General Fund can be summarized as follows:

- Total original revenue was budgeted \$7,888,131 which was decreased to \$7,232,992. The budget was amended for a decrease in expected sales tax revenue of \$348,179 and decrease for intergovernmental resulting in \$212,465.

Final results for any given year will generally differ from that year's adopted budget. The final revised budget of the City's General Fund expenditures for 2019 was \$8,857,498, which differs from the original adopted budget of \$8,234,657 by \$622,841. These supplemental appropriations are summarized as follows:

- Increase in pay raises, employee benefits, fuel, and insurance.
- Areas of increase in the General Fund include road projects being completed in the 2018-2019 budget year.
- Construction for the future City Hall.

**CAPITAL ASSETS**

The City has invested in a broad range of capital assets, including roads, buildings, machinery and equipment, water and sewer lines, and automobiles and trucks. With the implementation of GASB 34, the City adopted a Capital Assets Policy setting a capital asset amount of \$2,500 or greater with an estimated life of at least two years to be implemented. The City has elected not to retroactively report infrastructure constructed prior to July 1, 2003. These items include the following:

	<b>June 30</b>					
	<b>Governmental Activities</b>		<b>Business-type Activities</b>		<b>Total</b>	
	<b>2019</b>	<b>2018</b>	<b>2019</b>	<b>2018</b>	<b>2019</b>	<b>2018</b>
Land	\$ 3,765,428	3,823,997	705,650	705,650	4,471,078	4,529,647
Construction in progress	410,237	2,666,355	102,916	210,054	513,153	2,876,409
Buildings	717,737	692,730	105,262	109,974	822,999	802,704
Infrastructure	27,167,787	25,368,211	19,450,996	19,636,286	46,618,783	45,004,497
Machinery and equipment	<u>1,358,629</u>	<u>1,294,421</u>	<u>2,016,985</u>	<u>1,916,021</u>	<u>3,375,614</u>	<u>3,210,442</u>
	<u>\$33,419,818</u>	<u>33,845,714</u>	<u>22,381,809</u>	<u>22,577,985</u>	<u>55,801,627</u>	<u>56,423,699</u>

Additional information on the City's capital assets can be found in Note C in the notes to the basic financial statements.

**CITY OF UNION, MISSOURI**  
**MANAGEMENT'S DISCUSSION AND ANALYSIS**  
**FOR THE YEAR ENDED JUNE 30, 2019**

---

**LONG-TERM DEBT**

At the end of the fiscal year 2019, the City had outstanding long-term debt obligations for governmental and business-type activities in the amount of \$7,655,991 compared to \$8,390,485 in fiscal year 2018. Of this amount, \$5,010,000 is certificates of participation, \$2,378,600 is revenue bonds, and \$267,391 is capital leases. The City's total debt decreased \$734,494 during the current fiscal year.

In December 2014, the City issued \$3,590,000 in certificates of participation. The issue is to fund the Veterans Memorial Park.

The City's governmental and business-type activities debt is detailed below:

	<b>June 30</b>	
	<b>2019</b>	<b>2018</b>
2014 certificates of participation	\$2,770,000	2,990,000
2013A & B certificates of participation	2,240,000	2,495,000
2017 revenue bonds	2,378,600	2,564,500
Capital lease obligation	<u>267,391</u>	<u>340,985</u>
Total	<u>\$7,655,991</u>	<u>8,390,485</u>

Additional information on the City's long-term debt can be found in Note F in the notes to the basic financial statements.

**ECONOMIC FACTORS AND NEXT YEAR'S BUDGET**

During the preparation of the budget for the ensuring fiscal year, the City took into consideration the current economic conditions. Following are the assumptions made in preparing the City's budget for the 2019-2020 fiscal year:

- Slight increase in sales tax
- Health insurance premium increase
- Reduction in state and federal monies
- Increase in property tax rate
- Low interest rates

The construction of the future City Hall began in 2019. This project will be completed in 2020.

**CITY OF UNION, MISSOURI**  
**MANAGEMENT'S DISCUSSION AND ANALYSIS**  
**FOR THE YEAR ENDED JUNE 30, 2019**

---

The City's new comprehensive plan, water study, and the five-year capital improvement plan are completed. These plans will be helpful with long-range planning purposes to accomplish goals and objectives for the City. The plans will help project costs and estimating revenues for the next five years which enables the City to prioritize and prepare for its future capital needs more effectively.

**REQUESTS FOR INFORMATION**

This financial report is designed to provide a general overview of the City's finances for all those with an interest. Questions concerning any of the information provided in this report or requests for additional financial information should be addressed to the Finance Officer, 500 East Locust Street, Union, MO 63084.



# CITY OF UNION, MISSOURI

## STATEMENT OF NET POSITION

JUNE 30, 2019

	Governmental Activities	Business-type Activities	Total
<b>ASSETS</b>			
Cash and investments	\$ 6,343,256	5,575,317	11,918,573
Accounts receivable	945,553	449,243	1,394,796
Property taxes receivable, net of allowance	47,054	-	47,054
Court fines receivable	79,360	-	79,360
Grants receivable	345,807	-	345,807
Accrued interest receivable	4,621	-	4,621
Inventory	-	166,655	166,655
Prepaid items	217,968	100,000	317,968
Restricted assets:			
Cash	5,406	1,459,645	1,465,051
Net pension asset	1,625,832	113,355	1,739,187
Capital assets:			
Land and construction in progress	4,175,665	808,566	4,984,231
Other capital assets, net of accumulated depreciation	29,244,153	21,573,243	50,817,396
Total Assets	<u>43,034,675</u>	<u>30,246,024</u>	<u>73,280,699</u>
<b>DEFERRED OUTFLOWS OF RESOURCES</b>			
Deferred charge on refunding	-	165,205	165,205
Deferred amounts related to pensions	658,694	48,664	707,358
Total Deferred Outflows Of Resources	<u>658,694</u>	<u>213,869</u>	<u>872,563</u>
<b>LIABILITIES</b>			
Accounts payable	251,320	149,570	400,890
Retainage payable	1,453	-	1,453
Accrued wages	71,923	8,289	80,212
Accrued expenses	17,011	60,195	77,206
Accrued interest payable	37,280	33,515	70,795
Customer deposits payable	-	121,150	121,150
Court bonds payable	4,293	-	4,293
Noncurrent liabilities:			
Due within one year	355,860	543,636	899,496
Due in more than one year	2,588,620	4,371,710	6,960,330
Total Liabilities	<u>3,327,760</u>	<u>5,288,065</u>	<u>8,615,825</u>
<b>DEFERRED INFLOWS OF RESOURCES</b>			
Deferred amounts related to pensions	738,733	50,203	788,936
<b>NET POSITION</b>			
Net investment in capital assets	30,650,931	17,661,023	48,311,954
Restricted for:			
Street improvements	803,895	-	803,895
Cemetery maintenance	87,160	-	87,160
Stormwater improvements	65	-	65
Water and sewer improvements	-	1,459,641	1,459,641
Pension	1,545,793	111,816	1,657,609
Debt service	-	4	4
Unrestricted net position	<u>6,539,032</u>	<u>5,889,141</u>	<u>12,428,173</u>
Total Net Position	<u>\$ 39,626,876</u>	<u>25,121,625</u>	<u>64,748,501</u>

**CITY OF UNION, MISSOURI**  
**STATEMENT OF ACTIVITIES**  
**FOR THE YEAR ENDED JUNE 30, 2019**

FUNCTIONS/PROGRAMS	Expenses	Program Revenues			Net Revenues (Expenses) And Changes In Net Position		
		Charges For Services	Operating Grants And Contributions	Capital Grants And Contributions	Primary Government		
					Governmental Activities	Business-type Activities	Total
<b>Primary Government</b>							
<b>Governmental Activities</b>							
General government	\$ 2,387,889	129,323	-	-	(2,258,566)	-	(2,258,566)
Public safety	1,919,394	574,584	23,553	-	(1,321,257)	-	(1,321,257)
Street department	2,203,031	21,542	407,901	476,173	(1,297,415)	-	(1,297,415)
Refuse collection and other	809,167	820,459	-	-	11,292	-	11,292
Culture and recreation	1,479,610	254,136	7,746	-	(1,217,728)	-	(1,217,728)
Planning and development	379,130	1,027	-	-	(378,103)	-	(378,103)
Building maintenance	135,363	-	-	-	(135,363)	-	(135,363)
Interest and fiscal charges	92,055	-	-	-	(92,055)	-	(92,055)
Total Governmental Activities	9,405,639	1,801,071	439,200	476,173	(6,689,195)	-	(6,689,195)
<b>Business-type Activities</b>							
Water/sewer	2,520,438	2,102,537	-	102,368	-	(315,533)	(315,533)
Total Primary Government	<u>\$ 11,926,077</u>	<u>3,903,608</u>	<u>439,200</u>	<u>578,541</u>	<u>(6,689,195)</u>	<u>(315,533)</u>	<u>(7,004,728)</u>
<b>General Revenues</b>							
Taxes:							
Sales					3,248,211	1,006,889	4,255,100
Property					1,348,324	-	1,348,324
Franchise					1,631,821	-	1,631,821
Other					243,735	-	243,735
Investment income					132,959	62,797	195,756
Grants and contribuitons not restricted to specific programs					68,420	-	68,420
Gain on sale of capital assets					710	-	710
Miscellaneous					15,915	32,442	48,357
Total General Revenues					<u>6,690,095</u>	<u>1,102,128</u>	<u>7,792,223</u>
<b>CHANGE IN NET POSITION</b>					900	786,595	787,495
<b>NET POSITION, JULY 1</b>					<u>39,625,976</u>	<u>24,335,030</u>	<u>63,961,006</u>
<b>NET POSITION, JUNE 30</b>					<u>\$ 39,626,876</u>	<u>25,121,625</u>	<u>64,748,501</u>

See notes to financial statements

**CITY OF UNION, MISSOURI**  
**BALANCE SHEET - GOVERNMENTAL FUNDS**  
**JUNE 30, 2019**

	<b>General Fund</b>	<b>Park Fund</b>	<b>Transportation Tax Fund</b>	<b>Other Governmental Funds</b>	<b>Total Governmental Funds</b>
<b>ASSETS</b>					
Cash and investments	\$ 5,609,509	-	646,522	87,225	6,343,256
Accounts receivable	787,265	915	157,373	-	945,553
Property taxes receivable, net of allowance	37,538	9,516	-	-	47,054
Court fines receivable	79,360	-	-	-	79,360
Grants receivable	345,807	-	-	-	345,807
Accrued interest receivable	4,621	-	-	-	4,621
Advance to other funds	2,343,326	-	-	-	2,343,326
Prepaid items	150,000	67,968	-	-	217,968
Restricted assets:					
Cash	4,293	1,113	-	-	5,406
<b>Total Assets</b>	<b>\$ 9,361,719</b>	<b>79,512</b>	<b>803,895</b>	<b>87,225</b>	<b>10,332,351</b>
<b>LIABILITIES</b>					
Accounts payable	\$ 216,829	34,491	-	-	251,320
Retainage payable	1,453	-	-	-	1,453
Wages payable	53,615	18,308	-	-	71,923
Advance from other funds	-	2,343,326	-	-	2,343,326
Court bonds payable	4,293	-	-	-	4,293
Accrued liabilities	14,060	2,951	-	-	17,011
<b>Total Liabilities</b>	<b>290,250</b>	<b>2,399,076</b>	<b>-</b>	<b>-</b>	<b>2,689,326</b>
<b>DEFERRED INFLOWS OF RESOURCES</b>					
Unavailable revenue:					
Property taxes	38,061	9,539	-	-	47,600
Court fines	79,360	-	-	-	79,360
<b>Total Deferred Inflows Of Resources</b>	<b>117,421</b>	<b>9,539</b>	<b>-</b>	<b>-</b>	<b>126,960</b>
<b>FUND BALANCES</b>					
Nonspendable	2,493,326	67,968	-	-	2,561,294
Restricted	-	1,113	803,895	87,225	892,233
Committed	3,524,000	-	-	-	3,524,000
Assigned	1,498,654	-	-	-	1,498,654
Unassigned	1,438,068	(2,398,184)	-	-	(960,116)
<b>Total Fund Balances</b>	<b>8,954,048</b>	<b>(2,329,103)</b>	<b>803,895</b>	<b>87,225</b>	<b>7,516,065</b>
<b>Total Liabilities, Deferred Inflows Of Resources, And Fund Balances</b>	<b>\$ 9,361,719</b>	<b>79,512</b>	<b>803,895</b>	<b>87,225</b>	<b>10,332,351</b>

**CITY OF UNION, MISSOURI**  
**RECONCILIATION OF THE BALANCE SHEET OF GOVERNMENTAL**  
**FUNDS TO THE STATEMENT OF NET POSITION**  
**JUNE 30, 2019**

---

Total Fund Balances - Governmental Funds \$ 7,516,065

Amounts reported for governmental activities in the statement of net position are different because:

Capital assets used in governmental activities are not financial resources and, therefore, are not reported in the governmental funds. The cost of the assets is \$49,920,737 and the accumulated depreciation is \$16,500,919. 33,419,818

Certain amounts are not a use of financial resources and, therefore, are not reported in the governmental funds. These items consist of:

Net pension asset	1,625,832
Deferred outflows related to pensions	658,694
Deferred inflows related to pensions	(738,733)

Other long-term assets are not available to pay for current period expenditures and, therefore, are deferred in the governmental funds. 126,960

Certain long-term liabilities are not due and payable in the current period and, therefore, are not reported as liabilities in the governmental funds. Long-term liabilities at year-end consist of:

Accrued interest payable	(37,280)
Certificates of participation	(2,770,000)
Compensated absences	(174,480)

Total Net Position Of Governmental Activities \$ 39,626,876

**CITY OF UNION, MISSOURI**  
**STATEMENT OF REVENUES, EXPENDITURES, AND**  
**CHANGES IN FUND BALANCES - GOVERNMENTAL FUNDS**  
**FOR THE YEAR ENDED JUNE 30, 2019**

	<b>General Fund</b>	<b>Park Fund</b>	<b>Transportation Tax Fund</b>	<b>Other Governmental Funds</b>	<b>Total Governmental Funds</b>
<b>REVENUES</b>					
Taxes	\$ 5,573,324	313,392	1,006,890	-	6,893,606
Fines and forfeitures	79,960	-	-	-	79,960
Licenses and permits	110,401	-	-	-	110,401
Charges for services	1,287,757	242,780	-	-	1,530,537
Intergovernmental	455,819	-	-	-	455,819
Investment income	119,661	2,047	9,935	1,316	132,959
Rental income	17,900	-	-	-	17,900
Miscellaneous	60,166	13,517	-	-	73,683
Total Revenues	<u>7,704,988</u>	<u>571,736</u>	<u>1,016,825</u>	<u>1,316</u>	<u>9,294,865</u>
<b>EXPENDITURES</b>					
Current:					
General government	2,441,755	-	-	-	2,441,755
Public safety	1,847,740	-	-	-	1,847,740
Street department	790,175	-	-	-	790,175
Refuse collection and other	820,431	-	-	-	820,431
Culture and recreation	-	988,451	-	-	988,451
Planning and development	350,324	-	-	-	350,324
Building maintenance	61,579	-	-	-	61,579
Capital outlay	1,623,198	60,554	-	-	1,683,752
Debt service:					
Principal	-	220,000	-	-	220,000
Interest and fiscal charges	-	96,429	-	-	96,429
Total Expenditures	<u>7,935,202</u>	<u>1,365,434</u>	<u>-</u>	<u>-</u>	<u>9,300,636</u>
<b>REVENUES OVER (UNDER) EXPENDITURES</b>	<u>(230,214)</u>	<u>(793,698)</u>	<u>1,016,825</u>	<u>1,316</u>	<u>(5,771)</u>
<b>OTHER FINANCING SOURCES (USES)</b>					
Sale of capital assets	32,358	-	-	710	33,068
Other reimbursement	68,420	-	-	-	68,420
Transfers in	983,700	885,575	-	-	1,869,275
Transfers out	(885,575)	-	(983,700)	-	(1,869,275)
Total Other Financing Sources (Uses)	<u>198,903</u>	<u>885,575</u>	<u>(983,700)</u>	<u>710</u>	<u>101,488</u>
<b>NET CHANGES IN FUND BALANCES</b>	(31,311)	91,877	33,125	2,026	95,717
FUND BALANCES, JULY 1	<u>8,985,359</u>	<u>(2,420,980)</u>	<u>770,770</u>	<u>85,199</u>	<u>7,420,348</u>
FUND BALANCES, JUNE 30	<u>\$ 8,954,048</u>	<u>(2,329,103)</u>	<u>803,895</u>	<u>87,225</u>	<u>7,516,065</u>

See notes to financial statements

**CITY OF UNION, MISSOURI**  
**RECONCILIATION OF THE STATEMENT OF REVENUES,**  
**EXPENDITURES, AND CHANGES IN FUND BALANCES OF**  
**GOVERNMENTAL FUNDS TO THE STATEMENT OF ACTIVITIES**  
**FOR THE YEAR ENDED JUNE 30, 2019**

---

Net Change In Fund Balances - Governmental Funds	\$ 95,717
--	-----------

Amounts reported for governmental activities in the statement of activities are different because:

Capital outlays are reported in the governmental funds as expenditures. However, in the statement of activities, the cost of those assets is allocated over their estimated useful lives and reported as depreciation expense. This is the amount by which depreciation (\$2,010,925) exceeded capital outlays over the capitalization threshold (\$1,600,458) in the current period.	(410,467)
---	-----------

The net effect of various transactions involving capital assets:

Contributed capital assets	43,907
Disposal of capital assets	(59,336)

Revenues in the statement of activities that do not provide current financial resources are not reported as revenues in the governmental funds.	(2,073)
---	---------

The issuance of long-term debt (i.e., bonds, leases) provides current financial resources to the governmental funds, while the repayment of the principal of long-term debt consumes the current financial resources of the governmental funds. Neither transaction, however, has any effect on net position. Also, the governmental funds report the effect of premiums, discounts, and similar items when debt is first issued, whereas these amounts are deferred and amortized in the statement of activities. This amount is the effect of these differences in the treatment of long-term debt and related items.

Repayments:

Certificates of participation	220,000
-------------------------------	---------

Under the modified accrual basis of accounting used in the governmental funds financial statements, expenditures are not recognized for transactions that are not normally paid with expendable available financial resources. In the statement of activities, however, which is presented on the accrual basis of accounting, expenses and liabilities are reported regardless of when financial resources are available.

Accrued compensated absence liability	(2,186)
Accrued interest on debt	4,374
Pension expense	110,964

Change In Net Position Of Governmental Activities	<u>\$ 900</u>
---	---------------

**CITY OF UNION, MISSOURI**  
**STATEMENT OF NET POSITION - PROPRIETARY FUND**  
**JUNE 30, 2019**

	<b>Business-type Activities - Enterprise Fund Water/Sewer</b>
<b>ASSETS</b>	
<b>Current Assets</b>	
Cash and cash investments	\$ 5,575,317
Accounts receivable	449,243
Inventory	166,655
Prepaid items	100,000
Total Current Assets	<u>6,291,215</u>
<b>Noncurrent Assets</b>	
Cash and cash investments - restricted	1,459,645
Net pension asset	113,355
Land and construction in progress	808,566
Other capital assets, net of accumulated depreciation	21,573,243
Total Noncurrent Assets	<u>23,954,809</u>
Total Assets	<u>30,246,024</u>
<b>DEFERRED OUTFLOWS OF RESOURCES</b>	
Deferred charge on refunding	165,205
Deferred amounts related to pensions	48,664
Total Deferred Outflows Of Resources	<u>213,869</u>
<b>LIABILITIES</b>	
<b>Current Liabilities</b>	
Accounts payable	149,570
Accrued wages	8,289
Accrued expenses	60,195
Accrued interest payable	33,515
Accrued compensated absences - current	22,017
Capital lease - current	77,519
Debt payable - current	444,100
Total Current Liabilities	<u>795,205</u>
<b>Noncurrent Liabilities</b>	
Customer deposits payable	121,150
Accrued compensated absences	7,338
Capital leases payable	189,872
Debt payable, net	4,174,500
Total Noncurrent Liabilities	<u>4,492,860</u>
Total Liabilities	<u>5,288,065</u>
<b>DEFERRED INFLOWS OF RESOURCES</b>	
Deferred amounts related to pensions	<u>50,203</u>
<b>NET POSITION</b>	
Net investment in capital assets	17,661,023
Restricted for debt service	4
Restricted for water and sewer improvements	1,459,641
Restricted for pension	111,816
Unrestricted	<u>5,889,141</u>
Total Net Position	<u>\$ 25,121,625</u>



**CITY OF UNION, MISSOURI**  
**STATEMENT OF REVENUES, EXPENSES, AND**  
**CHANGE IN NET POSITION - PROPRIETARY FUND**  
**FOR THE YEAR ENDED JUNE 30, 2019**

	<b>Business-type Activities - Enterprise Fund Water/Sewer</b>
<b>OPERATING REVENUES</b>	
Charges for services:	
Water	\$ 1,204,685
Sewer	897,852
Total Operating Revenues	<u>2,102,537</u>
<b>OPERATING EXPENSES</b>	
Depreciation	760,658
Water	712,628
Sewer	871,140
Total Operating Expenses	<u>2,344,426</u>
<b>OPERATING LOSS</b>	<u>(241,889)</u>
<b>NONOPERATING REVENUES (EXPENSES)</b>	
Taxes	1,006,889
Investment income	62,797
Miscellaneous	32,442
Interest expense and fiscal charges	(176,012)
Total Nonoperating Revenues (Expenses)	<u>926,116</u>
<b>INCOME BEFORE CAPITAL CONTRIBUTIONS</b>	684,227
<b>CAPITAL CONTRIBUTIONS</b>	<u>102,368</u>
<b>CHANGE IN NET POSITION</b>	786,595
<b>NET POSITION, JULY 1</b>	<u>24,335,030</u>
<b>NET POSITION, JUNE 30</b>	<u><u>\$ 25,121,625</u></u>

**CITY OF UNION, MISSOURI**  
**STATEMENT OF CASH FLOWS - PROPRIETARY FUND**  
**FOR THE YEAR ENDED JUNE 30, 2019**

	<u><b>Business-type Activities - Enterprise Fund Water/Sewer</b></u>
<b>INCREASE (DECREASE) IN CASH AND CASH EQUIVALENTS</b>	
<b>Cash flows from operating activities:</b>	
Receipts from customers and users	\$ 2,121,208
Payments to suppliers	(746,245)
Payments to employees	(800,884)
Other receipts	32,442
Net Cash Provided By Operating Activities	<u>606,521</u>
<b>Cash flows provided by noncapital financing activities:</b>	
Taxes	<u>1,014,066</u>
<b>Cash flows from capital and related financing activities:</b>	
Interest paid on bonds	(143,533)
Payments on capital lease payable	(73,594)
Payments on bonds payable	(440,900)
Acquisition and construction of capital assets	(464,502)
Net Cash Used In Capital And Related Financing Activities	<u>(1,122,529)</u>
<b>Cash flows provided by investing activities:</b>	
Investment income	<u>62,797</u>
<b>NET INCREASE IN CASH AND CASH EQUIVALENTS</b>	560,855
<b>CASH AND CASH EQUIVALENTS, JULY 1</b>	<u>6,474,107</u>
<b>CASH AND CASH EQUIVALENTS, JUNE 30</b>	<u><u>\$ 7,034,962</u></u>
<b>RECONCILIATION OF OPERATING LOSS TO NET CASH PROVIDED BY OPERATING ACTIVITIES</b>	
Operating loss	<u>\$ (241,889)</u>
Adjustments to reconcile operating loss to net cash provided by operating activities:	
Depreciation	760,658
Miscellaneous receipts	32,442
Disposal of capital assets	2,388
(Increase) decrease in:	
Accounts receivable	13,071
Inventory	(13,201)
Prepaid items	2,172
Net pension asset	14,705
Deferred outflows related to pensions	(20,956)
Increase (decrease) in:	
Accounts payable	52,309
Accrued wages	(284)
Accrued compensated absences	(124)
Accrued expenses	4,495
Customer deposits payable	5,600
Deferred inflows related to pensions	(4,865)
Total Adjustments	<u>848,410</u>
Net Cash Provided By Operating Activities	<u><u>\$ 606,521</u></u>
<b>Supplemental disclosure of cash flow information:</b>	
Noncash investing, capital, and financing activities:	
Contributions of capital assets by developers	<u><u>\$ 102,368</u></u>

**CITY OF UNION, MISSOURI**  
**STATEMENT OF FIDUCIARY NET POSITION - AGENCY FUND**  
**JUNE 30, 2019**

---

**ASSETS**

Cash	<u>\$ 35,189</u>
------	------------------

**LIABILITIES**

Due to others	<u>\$ 35,189</u>
---------------	------------------

**NOTE A - SUMMARY OF SIGNIFICANT ACCOUNTING POLICIES**

The **CITY OF UNION, MISSOURI** (the City) was incorporated under the provisions of the State of Missouri. The City operates under a Mayor-Council form of government. The City's major operations include public safety (police), streets, sanitation, culture, and recreation, public improvements, planning and development, and general administrative services. Other services include utilities operations.

The accounting and financial reporting policies of the City conform to accounting principles generally accepted in the United States of America as applicable to governmental entities. The following is a summary of the more significant policies:

**1. Reporting Entity**

The financial statements of the City include the financial activities of the City and any component units, entities which are financially accountable to the City. The component unit discussed below is included in the City's reporting entity because of the significance of operational or financial relationships with the City.

**Dickey Bub Community Improvement District (CID)** -- the CID was formed in 2019. The majority of the Board of Directors are City employees. The CID will be included in the City's reporting entity because of the City's ability to impose its will on the CID. The CID does not issue separate financial statements. There was no activity in 2019.

**2. Government-wide and Fund Financial Statements**

In the government-wide financial statements (i.e., the statement of net position and the statement of activities) report information on all of the nonfiduciary activities of the primary government. For the most part, the effect of interfund activity has been removed from the statements. Governmental activities, which normally are supported by taxes and intergovernmental revenues, are reported separately from business-type activities, which rely to a significant extent on fees and charges for support.

The statement of activities demonstrates the degree to which the direct expenses of a given function or segment is offset by program revenues. Direct expenses are those that are clearly identifiable with a specific function or segment. Program revenues include: 1) charges to customers or applicants who purchase, use, or directly benefit from goods, services, or privileges provided by a given function or segment and 2) grants and contributions that are restricted to meeting the operational or capital requirements of a particular function or segment. Taxes and other items not properly included among program revenues are reported instead as general revenues.

Separate financial statements are provided for governmental funds, proprietary funds, and fiduciary funds, even though the latter are excluded from the government-wide financial statements.

Major individual governmental funds and major individual Enterprise Funds are reported as separate columns in the fund financial statements.

**NOTE A - SUMMARY OF SIGNIFICANT ACCOUNTING POLICIES (Continued)**

**3. Measurement Focus, Basis of Accounting, and Financial Statement Presentation**

The government-wide financial statements are reported using the economic resources measurement focus and the accrual basis of accounting, as are the proprietary fund financial statements.

Revenues are recorded when earned and expenses are recorded when a liability is incurred, regardless of the timing of related cash flows. Property taxes are recognized as revenues in the year for which they are levied. Grants and similar items are recognized as revenue as soon as all eligibility requirements imposed by the provider have been met.

Governmental funds financial statements are reported using the current financial resources measurement focus and the modified accrual basis of accounting. Revenues are recognized as soon as they are both measurable and available. Revenues are considered to be available when they are collectible within the current period or soon enough thereafter to pay liabilities of the current period. For this purpose, the City considers revenues to be available if they are collected within 60 days of the end of the current fiscal period. Expenditures generally are recorded when a liability is incurred, as under accrual accounting. However, debt service expenditures, as well as expenditures related to compensated absences and claims and judgments, are recorded only when payment is due (i.e., matured).

Property taxes, franchise taxes, licenses, and interest associated with the current fiscal period are all considered to be susceptible to accrual and so have been recognized as revenues of the current fiscal period. All other revenue items are considered to be measurable and available only when cash is received by the City.

The City reports the following major governmental funds:

**General Fund** -- This fund is the primary operating fund of the City. It is used to account for all financial resources except those required to be accounted for in another fund.

**Park Fund** -- This fund is a Special Revenue Fund used to account for the collection of taxes and park programs revenue and for the activities related to the parks department.

**Transportation Tax Fund** -- This fund is a Special Revenue Fund used to account for gasoline excise and commercial vehicle taxes legally restricted for street improvements.

The City reports the following major proprietary fund:

**Water/Sewer Fund** -- This fund is used to account for operations of the City's water and sewer departments.

**NOTE A - SUMMARY OF SIGNIFICANT ACCOUNTING POLICIES (Continued)**

**3. Measurement Focus, Basis of Accounting, and Financial Statement Presentation (Continued)**

Additionally, the City reports the following fiduciary fund type:

**Agency Funds** -- Agency Funds are used to account for assets held by the City as an agent for police evidence and donations for the veteran's memorial. Agency Funds do not have a measurement focus, although they do have a basis of accounting.

As a general rule the effect of interfund activity has been eliminated from the government-wide financial statements. Exceptions to this rule are payment-in-lieu of taxes and other charges and various other functions of the City. Elimination of these charges would distort the direct costs and program revenues reported for the various functions concerned.

Amounts reported as program revenues include: 1) charges to customers or applicants for goods, services, or privileges provided; 2) operating grants and contributions; and 3) capital grants and contributions, including special assessments. Internally dedicated resources are reported as general revenues rather than as program revenues. Likewise, general revenues include all taxes.

Proprietary funds distinguish operating revenues and expenses from nonoperating items. Operating revenues and expenses generally result from providing services and producing and delivering goods in connection with a proprietary fund's principal ongoing operations. The principal operating revenues of the City's Enterprise Fund are charges for sales and services. Operating expenses for Enterprise Funds include the cost of sales and services, administrative expenses, and depreciation on capital assets. All revenues and expenses not meeting this definition are reported as nonoperating revenues and expenses.

**4. Cash and Investments**

For cash flow statement purposes, the City considers all highly liquid debt instruments purchased with a maturity of three months or less to be cash equivalents. GASB Statement No. 31, *Accounting and Financial Reporting for Certain Investments and for External Investment Pools*, requires that all investments be reported in the financial statements at fair value. Fair value is established as readily determinable current market value for equity and debt securities. State statutes authorize the City to invest in obligations of the U.S. Treasury, federal agencies, commercial paper, corporate bonds, and repurchase agreements.

**5. Allowance for Uncollectible Accounts**

Property taxes receivables are shown net of an allowance for uncollectible accounts of \$66,865 and \$16,716 in the General and Park Funds, respectively.

**NOTE A - SUMMARY OF SIGNIFICANT ACCOUNTING POLICIES (Continued)**

**6. Inventory**

Inventory in the proprietary fund are valued at cost (first-in, first-out) and the expense is recognized when inventory items are consumed in operations.

**7. Prepaid Items**

Payments made to vendors for services that will benefit periods beyond the fiscal year-end are recorded as prepaid items. Prepaid items are recorded as expenditures when consumed rather than purchased. Prepaid items are equally offset by a fund balance reserve which indicates that they do not constitute “available spendable resources” even though they are a component of net current assets.

**8. Due To/From Other Funds**

Activity between funds that are representative of lending/borrowing arrangements outstanding at the end of the fiscal year are referred to as “due to/from”, are considered “available spendable resources”, and are subject to elimination upon consolidation.

**9. Restricted Assets**

Certain resources set aside for the repayment of utility customer deposits, court bond deposits, and trustee accounts restricted for debt service are classified as restricted assets on the balance sheet because their use is limited to repayment of deposits and debt service liabilities.

**10. Capital Assets**

Capital assets, which include property, equipment, and infrastructure (e.g., roads, bridges, sidewalks, and similar items), are reported in the applicable governmental or business-type activities columns in the government-wide financial statements. Capital assets are defined by the City as assets with an initial cost of more than \$2,500 or betterments with a cost of more than \$5,000 and an estimated useful life in excess of one year. Such assets are recorded at historical cost or estimated historical cost if purchased or constructed.

Donated capital assets are recorded at estimated acquisition value at the date of donation. Infrastructure acquired prior to the implementation of GASB 34 has not been reported.

The cost of normal maintenance and repairs that do not add to the value of the asset or materially extend assets lives are not capitalized.

**NOTE A - SUMMARY OF SIGNIFICANT ACCOUNTING POLICIES (Continued)**

**10. Capital Assets (Continued)**

Depreciation is being computed on the straight-line method, using asset lives as follows:

Assets	Years
Buildings	20 - 50
Infrastructure	10 - 50
Machinery and equipment	3 - 25

**11. Compensated Absences**

City employees generally earn vacation monthly based upon their length of service to the City. Regular full-time employees who are separated from service are compensated for vacation accrued up to the date of separation. Comp time accrued is also paid upon the date of separation. All vacation pay and comp time is accrued when incurred in the government-wide and proprietary fund financial statements. Sick leave is accumulated based on length of service and is available only to provide compensation during periods of illness. No portion of sick leave is payable to the employee upon termination, therefore, no liability is reported for sick leave.

**12. Long-term Liabilities**

In the government-wide financial statements and proprietary fund types in the fund financial statements, long-term debt and other long-term obligations are reported as liabilities in the applicable governmental activities, business-type activities, or proprietary fund type statement of net position. Bond premiums and discount are deferred and amortized over the life of the bonds using the straight-line method. Bonds payable are reported net of the applicable bond premium or discount.

In the fund financial statements, governmental fund types recognize bond premiums and discounts, as well as bond issuance costs, during the current period. The face amount of debt issued is reported as other financing sources. Premiums received on debt issuances are reported as other financing sources while discounts on debt issuances are reported as other financing uses. Issuance costs, whether or not withheld from the actual debt proceeds received, are reported as debt service expenditures. Bonds are to be liquidated by the related fund.

**13. Deferred Outflows/Inflows of Resources**

In addition to assets, the statement of financial position will sometimes report a separate section for deferred outflows of resources. This separate financial statement element represents a consumption of net position that applies to a future period(s) and so will not be recognized as an outflow of resources (expense/expenditure) until then. The City has two items that qualify for reporting in this category in the government-wide statement of net position. The first item is the deferred charge on refunding which results from the difference in the carrying value of refunded



**NOTE A - SUMMARY OF SIGNIFICANT ACCOUNTING POLICIES (Continued)**

**13. Deferred Outflows/Inflows of Resources (Continued)**

debt and its reacquisition price. This amount is deferred and amortized over the shorter of the life of the refunded or refunding debt. The second item is deferred outflow related to the pension.

In addition to liabilities, the statement of financial position will sometimes report a separate section for deferred inflows of resources. This separate financial statement element represents an acquisition of net position that applies to a future period(s) and so will not be recognized as an inflow of resources (revenue) until that time. The City has two items that qualify for reporting in this category. The first item arises under a modified accrual basis of accounting. Unavailable revenues, is reported only in the governmental funds balance sheet. The governmental funds report unavailable revenues from various sources. These amounts are deferred and recognized as an inflow of resources in the period that the amounts become available. The second items deferred inflows related to the pension.

**14. Fund Balance Policies**

The fund balance amounts are reported in the following applicable categories listed from the most restrictive to the least restrictive:

**Nonspendable** -- The portion of a governmental fund's fund balances that are not in a spendable form, required, or contractually required to be maintained intact.

**Restricted** -- The portion of a governmental fund's fund balances that are subject to external enforceable legal restrictions.

**Committed** -- The portion of a governmental fund's fund balances with self-imposed constraints or limitations by formal action (ordinance) of the Board of Aldermen, the highest level of decision-making authority.

**Assigned** -- The portion of fund balance that the City intends to use for a specific purpose, as determined by the applicable designated officials to which the Board of Aldermen has designated authority - City Administrator. Intent can be expressed by the Board of Aldermen in the form of a motion. Action by the Board of Aldermen must occur prior to year-end.

**Unassigned** -- Amounts that are available for any purpose; these positive amounts are reported only in the General Fund.

When an expenditure is incurred in governmental funds which may be paid using either restricted or unrestricted resources, the City's policy is to pay the expenditure from the restricted fund balance and then from less restrictive classification - committed, assigned, and then unassigned fund balances.

**CITY OF UNION, MISSOURI**  
**NOTES TO FINANCIAL STATEMENTS**

**NOTE A - SUMMARY OF SIGNIFICANT ACCOUNTING POLICIES (Continued)**

**14. Fund Balance Policies (Continued)**

The fund balance details by classification are listed below:

<b>Fund Balances</b>	<b>June 30, 2019</b>			
	<b>General Fund</b>	<b>Park Fund</b>	<b>Transportation Tax Fund</b>	<b>Nonmajor Governmental Funds</b>
Nonspendable:				
Prepays	\$ 150,000	67,968	-	-
Advance to other funds	2,343,326	-	-	-
Restricted for:				
Cemetery	-	-	-	87,160
Stormwater management	-	-	-	65
Street department	-	-	803,895	-
Veteran's Memorial Park	-	1,113	-	-
Committed to:				
Parks and recreation	3,000,000	-	-	-
Capital projects	524,000	-	-	-
Assigned to:				
Subsequent years' budget	1,498,654	-	-	-
Unassigned	1,438,068	(2,398,184)	-	-
 Total Fund Balances	 \$ 8,954,048	 (2,329,103)	 803,895	 87,225

The fund balance of the City's General Fund has been accumulated to provide stability and flexibility to respond to unexpected adversity and/or opportunities. The target is to maintain a rolling beginning fund balance of not less than 25% of annual operating expenditures for the current fiscal year. Should the balance fall below the 25%, the City will identify a plan to restore the fund balance to its targeted amount as part of the budget proposal.

**15. Equity in Pooled Cash and Investments**

The City maintains the majority of its cash and investments in a pooled cash and investments account. As a control, the City also maintains separate accounting records for each fund, so that in the accompanying financial statements, equity in pooled cash and investments reflects each fund's share of such accounts.

**16. Grant Revenue**

Resources received by the City from other governments are accounted for within applicable funds based on the purpose and requirements of each grant. Revenues are recognized on an accounting basis consistent with the fund's measurement objective.

**NOTE A - SUMMARY OF SIGNIFICANT ACCOUNTING POLICIES (Continued)**

**16. Grant Revenue (Continued)**

Revenues related to expenditure-driven grants are recognized to the extent expenditures are incurred. Any excess or deficiency of grant revenues received compared to expenditures incurred is recorded as unearned revenue or amounts receivable from the grantor.

**17. Interfund Transactions**

In the fund financial statements, the City has the following types of transactions among funds:

**Transfers** -- Legally authorized transfers are reported when incurred as transfers in by the recipient fund and as transfers out by the disbursing fund.

Elimination of interfund activity has been made for governmental activities in the government-wide financial statements.

**18. Property Taxes**

The City's property taxes are levied each October 1 based on the assessed valuation for all real and personal property located in the City as of the previous January 1. Taxes are due upon receipt of billing and become delinquent after December 31. Liens are placed on property for delinquent taxes on January 1 following the due date.

The Franklin County Assessor establishes assessed values and the City tax collector makes collections. The assessed value at January 1, 2018 upon which the 2018 levy was based for \$188,295,427.

The City's tax rate was levied at \$0.7281 per \$100 of assessed valuation of which \$0.5868 is used for general governmental services and \$0.1413 is used for park services.

**19. Use of Estimates**

The preparation of basic financial statements in conformity with accounting principles generally accepted in the United States of America requires the City to make estimates and assumptions that affect the reported amounts of assets and liabilities at fiscal year-end and revenues and expenditures/expenses during the reporting period. Actual results could differ from those estimates.

**20. Pensions**

For purposes of measuring the net pension asset/liability, deferred outflows of resources and deferred inflows of resources related to pensions, and pension expense, information about the fiduciary net position of the Missouri Local Government Employees Retirement System (LAGERS) and additions to/deductions from LAGERS' fiduciary net position have been determined on the

**CITY OF UNION, MISSOURI**  
**NOTES TO FINANCIAL STATEMENTS**

**NOTE A - SUMMARY OF SIGNIFICANT ACCOUNTING POLICIES (Continued)**

**20. Pensions (Continued)**

same basis as they are reported by LAGERS. For this purpose, benefit payments are recognized when due and payable in accordance with the benefit terms. LAGERS' investments are reported at fair value.

**NOTE B - CASH AND INVESTMENTS**

**1. Deposits**

Custodial credit risk for deposits is the risk that in the event of a bank failure, the City's deposits may not be returned or the City will not be able to recover collateral securities in the possession of an outside party. The City's bank deposits are required by state law to be secured by the deposit of certain securities specified at RSMo 30.270 with the City or trustee institution. The value of the securities must amount to the total of the City's cash not insured by the Federal Deposit Insurance Corporation.

As of June 30, 2019, the City's bank balances were entirely secured or collateralized with securities held by the City or by its agent in the City's name.

**2. Investments**

As of June 30, 2019, the City had the following investments:

Investments	Fair Value	Maturities			Credit Risk
		No Maturity	Less Than One Year	1 - 5 Years	
<b>Governmental Funds</b>					
Certificates of deposit	\$ 4,000,000	-	4,000,000	-	N/A
Cash deposits	<u>2,350,662</u>				
Total Governmental Funds Cash And Investments	<u>\$ 6,350,662</u>				
<b>Proprietary Funds</b>					
Cash deposits	<u>\$ 7,034,962</u>	-	-	-	N/A

**Investments Policies**

**Credit Risk** is the risk that an issuer or other counterparty to an investment will not fulfill its obligations. In accordance with its investment policy, the City minimizes credit risk by diversifying the portfolio to reduce potential losses on individual securities.

**NOTE B - CASH AND INVESTMENTS (Continued)**

**2. Investments (Continued)**

**Interest Rate Risk** is the risk that changes in interest rates will adversely affect the fair value of an investment. Investments held for longer periods are subject to increased risk of adverse interest rate changes. In accordance with its investment policy, the City minimizes interest rate risk by structuring the investment portfolio so that securities mature to meet cash requirements for ongoing operations, therefore avoiding the need to sell securities on the open market prior to maturity and investing in primarily shorter term securities.

**Concentration of Credit Risk** is the risk of loss attributed to the magnitude of the City's investment in a single issuer. In accordance with its investment policy, the City minimizes concentration of credit risk by diversifying the investment portfolio.

**3. Fair Value Measurements**

The City categorizes its fair value measurements within the fair value hierarchy established by accounting principles generally accepted in the United States of America. The hierarchy is based on the valuation inputs used to measure the fair value of the asset. Level 1 inputs are quoted prices in active markets for identical assets; Level 2 inputs are significant other observable inputs; Level 3 inputs are significant unobservable inputs. Matrix pricing is used to value securities based on the securities' relationship to benchmark quoted prices.

The inputs and methodologies used for valuing investment securities are not necessarily an indication of risk associated with investing in those securities.

The City only has certificate of deposits as of June 30, 2019, which are not measured at fair value and are excluded from the fair value hierarchy.

**NOTE C - CAPITAL ASSETS**

Capital asset activity was as follows:

**CITY OF UNION, MISSOURI**  
**NOTES TO FINANCIAL STATEMENTS**

**NOTE C - CAPITAL ASSETS (Continued)**

**For The Year Ended June 30, 2019**

	<b>Balance June 30 2018</b>	<b>Increases</b>	<b>Decreases</b>	<b>Balance June 30 2019</b>
<b>Governmental Activities</b>				
Capital assets not being depreciated:				
Land	\$ 3,823,997	-	58,569	3,765,428
Construction in progress	2,666,355	1,037,466	3,293,584	410,237
Total Capital Assets Not Being Depreciated	6,490,352	1,037,466	3,352,153	4,175,665
Capital assets being depreciated:				
Buildings	2,665,459	55,066	-	2,720,525
Infrastructure	34,811,745	3,497,262	-	38,309,007
Machinery and equipment	4,430,945	348,155	63,560	4,715,540
Total Capital Assets Being Depreciated	41,908,149	3,900,483	63,560	45,745,072
Less - Accumulated depreciation for:				
Buildings	1,972,729	30,059	-	2,002,788
Infrastructure	9,443,534	1,697,686	-	11,141,220
Machinery and equipment	3,136,524	283,180	62,793	3,356,911
Total Accumulated Depreciation	14,552,787	2,010,925	62,793	16,500,919
Total Capital Assets Being Depreciated, Net	27,355,362	1,889,558	767	29,244,153
 Governmental Activities Capital Assets, Net	 \$ 33,845,714	 2,927,024	 3,352,920	 33,419,818

Depreciation expense was charged to functions/programs of the City as follows:

	<b>For The Year Ended June 30 2019</b>
<b>Governmental Activities</b>	
General government	\$ 4,715
Public safety	65,915
Street department	1,354,568
Culture and recreation	502,848
Planning and development	6,391
Building maintenance	76,488
 Total	 <u>\$ 2,010,925</u>

**CITY OF UNION, MISSOURI**  
**NOTES TO FINANCIAL STATEMENTS**

**NOTE C - CAPITAL ASSETS (Continued)**

<b>For The Year Ended June 30, 2019</b>			
	<b>Balance June 30 2018</b>	<b>Increases</b>	<b>Decreases</b>
<b>Business-type Activities</b>			
Capital assets not being depreciated:			
Land	\$ 705,650	-	-
Construction in progress	210,054	96,705	203,843
Total Capital Assets Not Being Depreciated	915,704	96,705	203,843
Capital assets being depreciated:			
Buildings	262,095	-	-
Infrastructure	27,501,031	390,194	-
Machinery and equipment	4,251,477	283,815	74,947
Total Capital Assets Being Depreciated	32,014,603	674,009	74,947
Less - Accumulated depreciation for:			
Buildings	152,121	4,712	-
Infrastructure	7,864,745	575,484	-
Machinery and equipment	2,335,456	180,462	72,558
Total Accumulated Depreciation	10,352,322	760,658	72,558
Total Capital Assets Being Depreciated, Net	21,662,281	(86,649)	2,389
Business-type Activities Capital Assets, Net	\$ 22,577,985	10,056	206,232
			<b>For The Year Ended June 30 2019</b>
<b>Business-type Activities</b>			
Water/sewer facility			\$ 760,658

**NOTE D - INTERFUND RECEIVABLES, PAYABLES, AND TRANSFERS**

Individual interfund assets and liabilities are as follows:

**Advance from/to other funds**

<b>Receivable Fund</b>	<b>Payable Fund</b>	<b>June 30 2019</b>
General Fund	Park Fund	\$ 2,343,326

**CITY OF UNION, MISSOURI**  
**NOTES TO FINANCIAL STATEMENTS**

---

**NOTE D - INTERFUND RECEIVABLES, PAYABLES, AND TRANSFERS (Continued)**

Interfund balances are due to negative cash balances and are expected to be repaid when funds are available.

Individual interfund transfers are as follows:

<u>Transfers In</u>	<u>Transfers Out</u>	<u>June 30 2019</u>
General Fund	Transportation Tax Fund	\$ 983,700
Park Fund	General Fund	<u>885,575</u>
Total		<u>\$ 1,869,275</u>

The principal purpose of interfund transfers is to provide a financing source to various funds that may not have the ability to cover all operating costs or capital expenditures with revenue generated by the fund.

**NOTE E - RESTRICTED NET POSITION**

The government-wide statement of net position reports \$4,008,374 of restricted net position, of which \$2,350,761 is restricted by enabling legislation.

**NOTE F - LONG-TERM DEBT**

Long-term debt consisted of the following:

	<u>June 30 2019</u>
<b>Governmental Activities</b>	
\$3,590,000 certificates of participation (Series 2014), used for construction of the Veteran's Memorial Park. Due in annual installments through August 1, 2029; interest payable at 3.23%.	<u>\$ 2,770,000</u>
<b>Business-type Activities</b>	
\$2,370,000 certificates of participation, under the terms of the refinancing agreement Series 2013A, due in annual installments through October 1, 2026; interest payable at 1.75% to 3.05%.	\$ 2,240,000
\$2,659,600 taxable revenue bonds, under the terms of the refinancing agreement Series 2017, due in annual installments through October 1, 2030; interest payable at 2.50%.	<u>2,378,600</u>
Total	<u>\$ 4,618,600</u>



**CITY OF UNION, MISSOURI**  
**NOTES TO FINANCIAL STATEMENTS**

**NOTE F - LONG-TERM DEBT (Continued)**

Annual principal and interest for governmental activities are as follows:

<b>For The Years Ending June 30</b>	<b>Certificates Of Participation</b>	
	<b>Principal</b>	<b>Interest</b>
2020	\$ 225,000	87,695
2021	235,000	80,346
2022	240,000	72,675
2023	250,000	64,842
2024	255,000	56,767
2025 - 2029	1,410,000	153,102
2030	155,000	2,503
Total	<u>\$ 2,770,000</u>	<u>517,930</u>

Annual principal and interest for business-type activities are as follows:

<b>For The Years Ending June 30</b>	<b>Certificates Of Participation</b>		<b>Revenue Bonds</b>	
	<b>Principal</b>	<b>Interest</b>	<b>Principal</b>	<b>Interest</b>
2020	\$ 260,000	56,068	184,100	58,328
2021	260,000	50,608	186,400	53,697
2022	270,000	44,508	190,800	49,037
2023	275,000	37,693	197,100	44,212
2024	280,000	30,268	200,900	39,261
2025 - 2029	895,000	40,664	1,072,900	118,448
2030 - 2031	-	-	346,400	8,678
Total	<u>\$ 2,240,000</u>	<u>259,809</u>	<u>2,378,600</u>	<u>371,661</u>

The following is a summary of the City's long-term debt transactions:

**CITY OF UNION, MISSOURI**  
**NOTES TO FINANCIAL STATEMENTS**

**NOTE F - LONG-TERM DEBT (Continued)**

	For The Year Ended June 30, 2019			Amounts Due Within One Year
	Balance June 30 2018	Additions	Reductions	Balance June 30 2019
<b>Governmental Activities</b>				
Certificates of participation	\$ 2,990,000	-	220,000	2,770,000
Compensated absences	172,294	318,422	316,236	174,480
Total Governmental Activities	<u>\$ 3,162,294</u>	<u>318,422</u>	<u>536,236</u>	<u>2,944,480</u>
<b>Business-type Activities</b>				
Certificates of participation	\$ 2,495,000	-	255,000	2,240,000
Revenue bonds	2,564,500	-	185,900	2,378,600
Capital lease obligation	340,985	-	73,594	267,391
Total Bonds And Capital Leases	5,400,485	-	514,494	4,885,991
Compensated absences	29,479	10,191	10,315	29,355
Total Business-type Activities	<u>\$ 5,429,964</u>	<u>10,191</u>	<u>524,809</u>	<u>4,915,346</u>

Compensated absences are generally liquidated by the General Fund. Certificates of participation, revenue bonds, and capital leases are liquidated by the appropriate related fund.

The City has entered into a capital lease agreement as lessee for financing the acquisition of water/sewer facilities.

The assets acquired through the capital lease is as follows:

	<u>June 30 2019</u> <u>Business-type Activities</u>
Assets:	
Infrastructure	\$ 914,863
Less - Accumulated depreciation	<u>402,539</u>
Total	<u>\$ 512,324</u>

**CITY OF UNION, MISSOURI**  
**NOTES TO FINANCIAL STATEMENTS**

**NOTE F - LONG-TERM DEBT (Continued)**

The future minimum lease obligations and the net present value of these minimum lease payments are as follows:

<b>For The Years Ending June 30</b>	<b>Business-type Activities</b>
2020	\$ 90,000
2021	90,000
2022	90,000
2023	<u>22,500</u>
Total Minimum Lease Payments	292,500
Less - Imputed interest	<u>25,109</u>
Present Value Of Minimum Lease Payments	<u><u>\$ 267,391</u></u>

**NOTE G - PENSION PLAN**

***Plan Description***

The City defined benefit pension plan provides certain retirement, disability and death benefits to plan members and beneficiaries. The City participates in the Missouri Local Government Employees Retirement System (LAGERS). LAGERS is an agent multiple-employer, statewide public employee pension plan established in 1967 and administered in accordance with RSMo 70.600-70.755. As such, it is LAGERS' responsibility to administer the law in accordance with the expressed intent of the General Assembly. The plan is qualified under the Internal Revenue Code Section 401(a) and is tax exempt. The responsibility for the operations and administration of LAGERS is vested in the LAGERS' Board of Trustees consisting of seven persons. LAGERS issues a publicly available financial report that includes financial statements and required supplemental information. This report may be obtained by accessing the LAGERS' website at [www.molagers.org](http://www.molagers.org).

***Benefits Provided***

LAGERS provides retirement, death and disability benefits. Benefit provisions are adopted by the governing body of the employer, within the options available in the state statutes governing LAGERS. All benefits vest after 5 years of credited service. Employees who retire on or after age 60 (55 for police) with 5 or more years of service are entitled to an allowance for life based upon the benefit program information provided below.

**NOTE G - PENSION PLAN (Continued)**

Employees may retire with an early retirement benefit with a minimum of 5 years of credited service and after attaining age 55 (50 for police) and receive a reduced allowance.

**2019**  
**Valuation**

Benefit multiplier	2% for life
Final average salary	3 Years
Member contributions	- %

Benefit terms provide for annual post-retirement adjustments to each member's retirement allowance subsequent to the member's retirement date. The annual adjustment is based on the increase in the Consumer Price Index and is limited to 4% per year.

***Employees Covered by Benefit Terms***

At June 30, 2019, the following employees were covered by the benefit terms:

Inactive employees or beneficiaries currently receiving benefits	55
Inactive employees entitled to but not yet receiving benefits	19
Active employees	<u>72</u>
Total	<u><u>146</u></u>

***Contributions***

The City is required to contribute amounts at least equal to the actuarially determined rate, as established by LAGERS. The actuarially determined rate is the estimated amount necessary to finance the cost of benefits earned by employees during the year, with an additional amount to finance an unfunded accrued liability. Full-time employees of the City do not contribute to the pension plan. The City contribution rates are 12.3% (General) and 5.9% (Police) of annual covered payroll.

***Net Pension Liability (Asset)***

The City's net pension liability (asset) was measured as of June 30, 2019, and the total pension liability used to calculate the net pension liability (asset) was determined by an actuarial valuation as of February 28, 2019.

**NOTE G - PENSION PLAN (Continued)**

***Actuarial Assumptions***

The total pension liability in the February 28, 2019 actuarial valuation was determined using the following actuarial assumptions, applied to all periods included in the measurement:

Inflation	3.25% wage inflation; 2.50% price inflation
Salary increase	3.25% to 6.55% including wage inflation
Investment rate of return	7.25%, net of investment expenses

The healthy retiree mortality tables for post-retirement mortality were RP-2014 Healthy Annuitant mortality table for males and females. The disabled retiree mortality tables for post-retirement mortality were the RP-2014 disabled mortality table for males and females. The pre-retirement mortality tables used were the RP-2014 employees' mortality tables for males and females.

Both the post-retirement and pre-retirement tables were adjusted for mortality improvement back to the observation period base year of 2006. The base year for males was then established to be 2017. Mortality rates for a particular calendar year are determined by applying the MP-2015 mortality improvement scale to the above described tables.

The actuarial assumptions used in the February 28, 2019 valuation were based on the results of an actuarial experience study for the period March 1, 2010 through February 28, 2015.

The long-term expected rate of return on pension plan investments was determined using a model method in which the best-estimate ranges of expected future real rates of return (expected returns, net of investment expenses and inflation) are developed for each major asset class. These ranges are combined to produce the long-term expected rate of return by weighting the expected future real rates of return by the target asset allocation percentage and by adding expected inflation. The target allocation and best estimates of arithmetic real rates of return for each major asset class are summarized in the following table:

<u>Asset Class</u>	<u>Target Allocation</u>	<u>Weighted Average Long-term Expected Real Rate Of Return</u>
Alpha	15.00%	3.67%
Equity	35.00	4.78
Fixed income	31.00	1.41
Real assets	36.00	3.29
Strategic assets	8.00	5.25
Cash	10.00	-
Leverage	(35.00)	(0.51)

**CITY OF UNION, MISSOURI**  
**NOTES TO FINANCIAL STATEMENTS**

**NOTE G - PENSION PLAN (Continued)**

***Discount Rate***

The discount rate used to measure the total pension liability is 7.25%. The projection of cash flows used to determine the discount rate assumes that employer and employee contributions will be made at the rates agreed upon for employees and the actuarially determined rates for employers. Based on these assumptions, the pension plan's fiduciary net position was projected to be available to pay all projected future benefit payments of current active and inactive employees. Therefore, the long-term expected rate of return on pension plan investments was applied to all periods of projected benefit payment to determine the total pension liability.

**Changes in the Net Pension Liability (Asset)**

	<b>Increase (Decrease)</b>		
	<b>Total Pension Liability</b>	<b>Plan Fiduciary Net Position</b>	<b>Net Pension Liability (Asset)</b>
	<b>(a)</b>	<b>(b)</b>	<b>(a)-(b)</b>
<b>Balances at June 30, 2018</b>	<u>\$ 17,165,747</u>	<u>18,973,582</u>	<u>(1,807,835)</u>
<b>Changes for the year</b>			
Service cost	356,029	-	356,029
Interest	1,235,531	-	1,235,531
Difference between expected and actual experience	362,244	-	362,244
Contributions - employer	-	311,131	(311,131)
Net investment income	-	1,358,590	(1,358,590)
Benefit payments, including refunds	(608,325)	(608,325)	-
Administrative expense	-	(16,782)	16,782
Other	-	232,217	(232,217)
Net Changes	<u>1,345,479</u>	<u>1,276,831</u>	<u>68,648</u>
<b>Balances at June 30, 2019</b>	<u><u>\$ 18,511,226</u></u>	<u><u>20,250,413</u></u>	<u><u>(1,739,187)</u></u>

***Sensitivity of the Net Pension Liability (Asset) to Changes in the Discount Rate***

The following presents the net pension liability (asset) of the City, calculated using the discount rate of 7.25%, as well as what the City's net pension liability (asset) would be using a discount rate that is 1% point lower (6.25%) or 1% point higher (8.25%) than the current rate.

	<b><u>1% Decrease</u></b>	<b><u>Current Single Discount Rate Assumption</u></b>	<b><u>1% Increase</u></b>
Net pension liability (asset)	<u>\$ 883,573</u>	<u>(1,739,187)</u>	<u>(3,902,821)</u>

**CITY OF UNION, MISSOURI**  
**NOTES TO FINANCIAL STATEMENTS**

**NOTE G - PENSION PLAN (Continued)**

**Pension Expense and Deferred Outflows of Resources and Deferred Inflows of Resources Related to Pensions**

For the year ended June 30, 2019 the City recognized pension expense of \$189,051. Reported deferred outflows and inflows of resources are related to the following sources:

	<u><b>Outflows</b></u>	<u><b>Inflows</b></u>	<u><b>Net Outflows</b></u>
Differences in experience	\$ 556,890	(180,957)	375,933
Assumption changes	150,468	-	150,468
Net difference between projected and actual earnings on pension plan investments	<u>-</u>	<u>(607,979)</u>	<u>(607,979)</u>
Total	<u><u>\$ 707,358</u></u>	<u><u>(788,936)</u></u>	<u><u>(81,578)</u></u>

Amounts reported as deferred outflows and inflows of resources related to pensions will be recognized in pension expense as follows:

**For The Plan  
Years Ending  
June 30**

2020	\$ 77,539
2021	(221,218)
2022	(54,272)
2023	102,348
2024	<u>14,025</u>
Total	<u><u>\$ (81,578)</u></u>

**Payable to the Pension Plan**

At June 30, 2019, the City reported a payable of \$24,007 for the outstanding amount of contributions to the pension plan.

**NOTE H - RISK MANAGEMENT**

The City is a member of the Missouri Intergovernmental Risk Management Association (MIRMA), a statewide governmental self-insurance pool which provides property, liability, and workers' compensation coverages to its participating members in a single comprehensive multiline package. The various lines of coverage are not

**NOTE H - RISK MANAGEMENT (Continued)**

available individually and the membership is limited to municipalities and municipally owned utilities. The City's policy covers all real and personal property owned by the City except sewer lines. The policy is for replacement cost and expires June 30, 2019.

MIRMA is funded by annual member assessments calculated at a rate per \$100 of annual payroll which applies to all lines of coverage on a composite basis. These funds are used to pay losses within specific risk retention limits shared equally by all members; purchase excess insurance which provides a transfer of catastrophic risk to private insurance carriers; purchase services such as claims administration, loss prevention, and data processing; and pay administrative expenses. Should actual insurance losses exceed MIRMA's estimates, the City could be required to contribute additional funds. Management believes the risk of additional loss is minimal and any additional contributions that may be required would not materially impact the overall operations of the City. The City paid an assessment totaling \$317,968 for MIRMA's fiscal year ended June 30, 2019. Settled claims resulting in these risks have not exceeded coverage in any of the past three years.

**NOTE I - COMMITMENTS**

At June 30, 2019, the City had commitments for the following projects:

	<b><u>Approximate Amounts Still Outstanding</u></b>
Road and bridge construction	\$ 238,863
City Hall	302,179
Railroad	4,127
Sanitary sewer evaluation	11,309
Sanitary sewer pretreatment program	<u>18,954</u>
Total	<u><u>\$ 575,432</u></u>

**NOTE J - CONDUIT DEBT**

The City issued industrial revenue bonds to provide funds for the purpose of carrying out industrial development projects by the City providing loans to private corporations pursuant to loan agreements between the City and the private corporation. The loan agreements call for the private corporations to repay the loans in the principal amount of the bonds plus related interest thereon. The related transactions are accounted for in various Agency Funds of the City. The City's conduit debt amounts are as follows:



**CITY OF UNION, MISSOURI**  
**NOTES TO FINANCIAL STATEMENTS**

**NOTE J - CONDUIT DEBT (Continued)**

	<u><b>June 30 2019</b></u>
\$4,000,000 Taxable Industrial Revenue Bonds (Pharma Tech Industrial Project Series 2014), due December 1, 2019.	\$ 889,054
\$4,500,000 Taxable Industrial Revenue Bonds (Black Creek Management LLC Series 2014), due December 1, 2019.	<u>2,875,728</u>
Total	<u><u>\$ 3,764,782</u></u>

**NOTE K - SEGMENT INFORMATION**

The City maintains two departments for the Water/Sewer Fund. Segment information is as follows:

	<u><b>Condensed Statement Of Net Position</b></u>		
	<u><b>June 30, 2019</b></u>		
	<u><b>Water</b></u>	<u><b>Sewer</b></u>	<u><b>Totals</b></u>
<b>ASSETS</b>			
Current and other assets	\$ 2,219,884	4,184,686	6,404,570
Restricted assets	-	1,459,645	1,459,645
Capital assets	7,275,096	15,106,713	22,381,809
Total Assets	<u>9,494,980</u>	<u>20,751,044</u>	<u>30,246,024</u>
<b>DEFERRED OUTFLOWS OF RESOURCES</b>	<u>24,332</u>	<u>189,537</u>	<u>213,869</u>
<b>LIABILITIES</b>			
Current liabilities	170,883	624,322	795,205
Noncurrent liabilities	318,360	4,174,500	4,492,860
Total Liabilities	<u>489,243</u>	<u>4,798,822</u>	<u>5,288,065</u>
<b>DEFERRED INFLOWS OF RESOURCES</b>	<u>25,102</u>	<u>25,101</u>	<u>50,203</u>
<b>NET POSITION</b>			
Net investment in capital assets	7,007,705	10,653,318	17,661,023
Restricted	55,907	1,515,554	1,571,461
Unrestricted	1,941,355	3,947,786	5,889,141
Total Net Position	<u><u>\$ 9,004,967</u></u>	<u><u>16,116,658</u></u>	<u><u>25,121,625</u></u>

**CITY OF UNION, MISSOURI**  
**NOTES TO FINANCIAL STATEMENTS**

**NOTE K - SEGMENT INFORMATION (Continued)**

<b>Condensed Statement Of Revenues, Expenses, And Changes In Net Position For The Year Ended June 30, 2019</b>			
	<b>Water</b>	<b>Sewer</b>	<b>Totals</b>
<b>OPERATING REVENUES</b>	\$ 1,204,685	897,852	2,102,537
DEPRECIATION	278,819	481,839	760,658
<b>OTHER OPERATING EXPENSES</b>	712,628	871,140	1,583,768
OPERATING INCOME (LOSS)	213,238	(455,127)	(241,889)
<b>NONOPERATING REVENUES (EXPENSES)</b>			
Taxes	-	1,006,889	1,006,889
Investment income	25,756	37,041	62,797
Miscellaneous	30,866	1,576	32,442
Interest expense and fiscal charges	(15,764)	(160,248)	(176,012)
Total Nonoperating Revenues (Expenses)	40,858	885,258	926,116
<b>INCOME BEFORE CAPITAL CONTRIBUTIONS</b>	254,096	430,131	684,227
CAPITAL CONTRIBUTIONS	40,459	61,909	102,368
<b>CHANGE IN NET POSITION</b>	294,555	492,040	786,595
NET POSITION, JULY 1	8,710,412	15,624,618	24,335,030
<b>NET POSITION, JUNE 30</b>	<u>\$ 9,004,967</u>	<u>16,116,658</u>	<u>25,121,625</u>
<b>Condensed Statement Of Cash Flows For The Year Ended June 30, 2019</b>			
	<b>Water</b>	<b>Sewer</b>	<b>Totals</b>
<b>INCREASE (DECREASE) IN CASH AND CASH EQUIVALENTS</b>			
Net cash provided by (used in):			
Operating activities	\$ 489,166	117,355	606,521
Noncapital financing activities	-	1,014,066	1,014,066
Capital and related financing activities	(248,095)	(874,434)	(1,122,529)
Investing activities	25,756	37,041	62,797
<b>NET INCREASE IN CASH AND CASH EQUIVALENTS</b>	266,827	294,028	560,855
CASH AND CASH EQUIVALENTS, JULY 1	1,546,650	4,927,457	6,474,107
<b>CASH AND CASH EQUIVALENTS, JUNE 30</b>	<u>\$ 1,813,477</u>	<u>5,221,485</u>	<u>7,034,962</u>

**NOTE L - RELATED PARTY TRANSACTIONS**

The City has entered into transactions with a company owned by an Alderman. The expenses totaled \$2,000 for the year ended June 30, 2019.

**NOTE M - DEFICIT BALANCE**

The Park Fund has a deficit in fund balance of \$2,329,103. The deficit will be offset by future revenues.

**NOTE N - CONTINGENCIES**

The City generally follows the practice of recording liabilities resulting from claims and legal actions only when they become fixed and determinable in amount. Various suits and claims against the City are presently pending. It is management's opinion that any liability resulting from pending suits in excess of insurance coverage will not have a material effect on the basic financial statements of the City at June 30, 2019.

**NOTE O - TAX ABATEMENT**

The City utilizes one type of tax abatement program to attract jobs and industrial investments in the City. It is Chapter 100. In Missouri, a municipality can issue industrial development revenue bonds ("Revenue Bonds") pursuant to Chapter 100 of the Revised Statutes of Missouri (RSMo). Under the Act, the municipality may issue Revenue Bonds to finance the cost of the purchase, construction, extension and improvements of warehouses, distribution facilities, research and development facilities, office industries, agricultural processing industries, service facilities which provide interstate commerce, and industrial plants, including the real estate either within or without the limits of such municipality, buildings, fixtures and machinery. Total property taxes abated under this agreement totaled \$737 in the fiscal year ended June 30, 2019.

**NOTE P - FUTURE ACCOUNTING PRONOUNCEMENT**

The Governmental Accounting Standards Board (GASB) has issued a statement not yet implemented by the City. The statement that might impact the City is as follows:

- GASB Statement No. 87, Leases. The objective of this Statement is to better meet the information needs of financial statement users by improving accounting and financial reporting for leases by governments. The requirements of this Statement are effective for reporting periods beginning after December 15, 2019. Earlier application is encouraged.

**NOTE Q - SUBSEQUENT EVENT**

On November 12, 2019, the City approved to refinance the certificates of participation Series 2014.

**REQUIRED SUPPLEMENTAL INFORMATION SECTION**

**CITY OF UNION, MISSOURI**  
**REQUIRED SUPPLEMENTAL INFORMATION - SCHEDULE OF**  
**REVENUES, EXPENDITURES, AND CHANGE IN FUND**  
**BALANCE - BUDGET AND ACTUAL - GENERAL FUND**  
**FOR THE YEAR ENDED JUNE 30, 2019**

	<b>Original Budget</b>	<b>Final Budget</b>	<b>Actual</b>	<b>Over (Under) Budget</b>
<b>REVENUES</b>				
Taxes	\$ 5,746,046	5,397,867	5,573,324	175,457
Fines and forfeitures	91,900	79,194	79,960	766
Licenses and permits	182,000	110,311	110,401	90
Charges for services	1,044,500	1,044,500	1,287,757	243,257
Intergovernmental	664,585	452,120	455,819	3,699
Investment income	94,000	94,000	119,661	25,661
Rental income	28,000	17,900	17,900	-
Miscellaneous	37,100	37,100	60,166	23,066
Total Revenues	<u>7,888,131</u>	<u>7,232,992</u>	<u>7,704,988</u>	<u>471,996</u>
<b>EXPENDITURES</b>				
General government:				
Mayor and board:				
Personnel services	44,752	46,037	46,031	(6)
General services	<u>15,400</u>	<u>17,300</u>	<u>16,998</u>	<u>(302)</u>
Total Mayor And Board	<u>60,152</u>	<u>63,337</u>	<u>63,029</u>	<u>(308)</u>
City clerk:				
Personnel services	119,151	119,151	118,755	(396)
Supplies and materials	2,300	2,300	981	(1,319)
General services	15,900	15,900	11,077	(4,823)
Maintenance and repairs	<u>32,200</u>	<u>32,200</u>	<u>25,943</u>	<u>(6,257)</u>
Total City Clerk	<u>169,551</u>	<u>169,551</u>	<u>156,756</u>	<u>(12,795)</u>
City collector:				
Personnel services	<u>-</u>	<u>-</u>	<u>1</u>	<u>1</u>
City administrator:				
Personnel services	220,588	220,588	219,503	(1,085)
Supplies and materials	3,200	3,200	2,732	(468)
General services	12,550	13,306	12,134	(1,172)
Maintenance and repairs	<u>1,650</u>	<u>1,650</u>	<u>558</u>	<u>(1,092)</u>
Total City Administrator	<u>237,988</u>	<u>238,744</u>	<u>234,927</u>	<u>(3,817)</u>

**(Continued)**

**CITY OF UNION, MISSOURI**  
**REQUIRED SUPPLEMENTAL INFORMATION - SCHEDULE OF**  
**REVENUES, EXPENDITURES, AND CHANGE IN FUND**  
**BALANCE - BUDGET AND ACTUAL - GENERAL FUND (Continued)**  
**FOR THE YEAR ENDED JUNE 30, 2019**

	<u>Original Budget</u>	<u>Final Budget</u>	<u>Actual</u>	<u>Over (Under) Budget</u>
<b>EXPENDITURES (Continued)</b>				
General government (Continued):				
City attorney:				
General services	<u>50,500</u>	<u>50,500</u>	<u>48,809</u>	<u>(1,691)</u>
Municipal division:				
Personnel services	47,845	48,605	48,399	(206)
Supplies and materials	2,450	2,450	1,378	(1,072)
General services	10,450	10,450	7,432	(3,018)
Maintenance and repairs	100	100	-	(100)
Total Municipal Division	<u>60,845</u>	<u>61,605</u>	<u>57,209</u>	<u>(4,396)</u>
Incidental:				
Personnel services	1,351,105	1,369,311	1,325,814	(43,497)
Supplies and materials	11,700	11,700	9,594	(2,106)
General services	470,424	470,424	457,226	(13,198)
Maintenance and repairs	64,500	92,203	67,740	(24,463)
Capital outlay	16,000	69,175	69,170	(5)
Total Incidental	<u>1,913,729</u>	<u>2,012,813</u>	<u>1,929,544</u>	<u>(83,269)</u>
Legal and elections:				
General service	17,700	20,655	20,650	(5)
Total General Government	<u>2,510,465</u>	<u>2,617,205</u>	<u>2,510,925</u>	<u>(106,280)</u>
Public safety:				
Personnel services	1,570,820	1,646,140	1,644,328	(1,812)
Supplies and materials	15,185	19,925	16,890	(3,035)
General services	113,765	113,765	81,177	(32,588)
Maintenance and repairs	118,424	121,709	105,345	(16,364)
Capital outlay	106,645	130,960	127,274	(3,686)
Total Public Safety	<u>1,924,839</u>	<u>2,032,499</u>	<u>1,975,014</u>	<u>(57,485)</u>
Street department:				
Personnel services	541,495	541,495	399,812	(141,683)
Supplies and materials	105,600	105,600	101,254	(4,346)
General services	18,800	18,800	13,828	(4,972)

**(Continued)**

**CITY OF UNION, MISSOURI**  
**REQUIRED SUPPLEMENTAL INFORMATION - SCHEDULE OF**  
**REVENUES, EXPENDITURES, AND CHANGE IN FUND**  
**BALANCE - BUDGET AND ACTUAL - GENERAL FUND (Continued)**  
**FOR THE YEAR ENDED JUNE 30, 2019**

	<u>Original Budget</u>	<u>Final Budget</u>	<u>Actual</u>	<u>Over (Under) Budget</u>
<b>EXPENDITURES (Continued)</b>				
Street department (Continued):				
Maintenance and repairs	106,077	305,407	275,281	(30,126)
Capital outlay	1,734,305	1,760,690	1,221,107	(539,583)
Total Street Department	<u>2,506,277</u>	<u>2,731,992</u>	<u>2,011,282</u>	<u>(720,710)</u>
Refuse collection and other:				
Cemetery:				
General services	200	200	-	(200)
Maintenance and repairs	38,000	38,000	23,601	(14,399)
Total Cemetery	<u>38,200</u>	<u>38,200</u>	<u>23,601</u>	<u>(14,599)</u>
Sanitation:				
General services	737,400	796,835	796,830	(5)
Total Refuse Collection And Other	<u>775,600</u>	<u>835,035</u>	<u>820,431</u>	<u>(14,604)</u>
Planning and development:				
Engineering services:				
Personnel services	194,137	194,974	194,251	(723)
Supplies and materials	1,500	1,500	680	(820)
General services	2,600	2,600	2,079	(521)
Maintenance and repairs	3,700	4,283	4,120	(163)
Capital outlay	11,600	11,600	10,984	(616)
Total Engineering Services	<u>213,537</u>	<u>214,957</u>	<u>212,114</u>	<u>(2,843)</u>
Economic development:				
Personnel services	129,676	129,676	125,663	(4,013)
Supplies and materials	1,300	1,300	779	(521)
General services	20,100	20,100	17,244	(2,856)
Maintenance and repairs	4,950	5,555	5,508	(47)
Capital outlay	25,650	50,650	50,397	(253)
Total Economic Develop- ment	<u>181,676</u>	<u>207,281</u>	<u>199,591</u>	<u>(7,690)</u>
Total Planning And De- velopment	<u>395,213</u>	<u>422,238</u>	<u>411,705</u>	<u>(10,533)</u>

**(Continued)**

**CITY OF UNION, MISSOURI**  
**REQUIRED SUPPLEMENTAL INFORMATION - SCHEDULE OF**  
**REVENUES, EXPENDITURES, AND CHANGE IN FUND**  
**BALANCE - BUDGET AND ACTUAL - GENERAL FUND (Continued)**  
**FOR THE YEAR ENDED JUNE 30, 2019**

	<b>Original Budget</b>	<b>Final Budget</b>	<b>Actual</b>	<b>Over (Under) Budget</b>
<b>EXPENDITURES (Continued)</b>				
Building maintenance:				
Personnel services	49,563	49,563	35,098	(14,465)
Supplies and materials	6,100	6,100	3,911	(2,189)
General services	15,100	15,100	19,110	4,010
Maintenance and repairs	3,500	3,500	3,460	(40)
Capital outlay	48,000	144,266	144,266	-
Total Building Maintenance	<u>122,263</u>	<u>218,529</u>	<u>205,845</u>	<u>(12,684)</u>
Total Expenditures	<u>8,234,657</u>	<u>8,857,498</u>	<u>7,935,202</u>	<u>(922,296)</u>
<b>REVENUES UNDER EXPENDITURES</b>	<u>(346,526)</u>	<u>(1,624,506)</u>	<u>(230,214)</u>	<u>1,394,292</u>
<b>OTHER FINANCING SOURCES (USES)</b>				
Sale of capital assets	1,500	1,500	32,358	30,858
Other reimbursement	-	68,420	68,420	-
Transfers in	983,700	983,700	983,700	-
Transfers out	<u>(885,575)</u>	<u>(885,575)</u>	<u>(885,575)</u>	<u>-</u>
Total Other Financing Sources (Uses)	<u>99,625</u>	<u>168,045</u>	<u>198,903</u>	<u>30,858</u>
<b>NET CHANGE IN FUND BALANCE</b>	<u><u>\$ (246,901)</u></u>	<u><u>(1,456,461)</u></u>	<u>(31,311)</u>	<u><u>1,425,150</u></u>
<b>FUND BALANCE, JULY 1</b>			<u>8,985,359</u>	
<b>FUND BALANCE, JUNE 30</b>			<u><u>\$ 8,954,048</u></u>	



**CITY OF UNION, MISSOURI**  
**REQUIRED SUPPLEMENTAL INFORMATION - SCHEDULE OF**  
**REVENUES, EXPENDITURES, AND CHANGE IN FUND BALANCE -**  
**BUDGET AND ACTUAL - PARK FUND - SPECIAL REVENUE FUND**  
**FOR THE YEAR ENDED JUNE 30, 2019**

	<b>Original Budget</b>	<b>Final Budget</b>	<b>Actual</b>	<b>Over (Under) Budget</b>
<b>REVENUES</b>				
Taxes	\$ 303,500	310,065	313,392	3,327
Charges for services	377,930	238,600	242,780	4,180
Investment income	1,880	1,880	2,047	167
Miscellaneous	13,000	13,000	13,517	517
Total Revenues	<u>696,310</u>	<u>563,545</u>	<u>571,736</u>	<u>8,191</u>
<b>EXPENDITURES</b>				
Current:				
Culture and recreation	1,255,354	1,303,720	988,451	(315,269)
Capital outlay	9,100	68,618	60,554	(8,064)
Debt service:				
Principal	220,000	220,000	220,000	-
Interest and fiscal charges	96,550	96,550	96,429	(121)
Total Expenditures	<u>1,581,004</u>	<u>1,688,888</u>	<u>1,365,434</u>	<u>(323,454)</u>
<b>REVENUES UNDER EXPENDI- TURES</b>	(884,694)	(1,125,343)	(793,698)	331,645
<b>OTHER FINANCING SOURCES</b>				
Transfers in	<u>885,575</u>	<u>885,575</u>	<u>885,575</u>	<u>-</u>
<b>NET CHANGE IN FUND BALANCE</b>	<u>\$ 881</u>	<u>(239,768)</u>	91,877	<u>331,645</u>
<b>FUND BALANCE, JULY 1</b>			<u>(2,420,980)</u>	
<b>FUND BALANCE, JUNE 30</b>			<u>\$ (2,329,103)</u>	

**CITY OF UNION, MISSOURI**  
**REQUIRED SUPPLEMENTAL INFORMATION - SCHEDULE OF REVENUES,**  
**EXPENDITURES, AND CHANGE IN FUND BALANCE - BUDGET AND ACTUAL -**  
**TRANSPORTATION TAX FUND - SPECIAL REVENUE FUND**  
**FOR THE YEAR ENDED JUNE 30, 2019**

---

	<b>Original Budget</b>	<b>Final Budget</b>	<b>Actual</b>	<b>Over (Under) Budget</b>
<b>REVENUES</b>				
Taxes	\$ 974,700	974,700	1,006,890	32,190
Investment income	14,000	9,930	9,935	5
Total Revenues	<u>988,700</u>	<u>984,630</u>	<u>1,016,825</u>	<u>32,195</u>
<b>OTHER FINANCING USES</b>				
Transfers out	<u>(983,700)</u>	<u>(983,700)</u>	<u>(983,700)</u>	<u>-</u>
<b>NET CHANGE IN FUND BALANCE</b>	<u>\$ 5,000</u>	<u>930</u>	33,125	<u>32,195</u>
<b>FUND BALANCE, JULY 1</b>			<u>770,770</u>	
<b>FUND BALANCE, JUNE 30</b>			<u>\$ 803,895</u>	

**CITY OF UNION, MISSOURI  
REQUIRED SUPPLEMENTAL INFORMATION - NOTES TO  
SCHEDULES OF REVENUES, EXPENDITURES, AND  
CHANGES IN FUND BALANCES - BUDGET AND ACTUAL  
FOR THE YEAR ENDED JUNE 30, 2019**

---

**Budgetary Data**

The City follows the procedures outlined below in establishing the budgetary data reflected in the financial statements:

- a. Prior to July 1, the Finance Officer submits to the Board of Aldermen a proposed operating budget for the fiscal year commencing the following July 1. The operating budget includes proposed expenditures and the means of financing them.
- b. Prior to July 1, the budget is legally enacted through passage of an ordinance.
- c. Budgets are adopted on a basis generally consistent with accounting principles generally accepted in the United States of America except for Enterprise Funds which include capital outlay as an expense.
- d. Current year budget includes amendments.
- e. Budget amendments at the department level must be approved by the Board of Aldermen. The City Administrator may authorize transfers of appropriations within a department.

**CITY OF UNION, MISSOURI**  
**REQUIRED SUPPLEMENTAL INFORMATION - SCHEDULE OF CHANGES**  
**IN NET PENSION LIABILITY (ASSET) AND RELATED RATIOS**  
**FOR THE YEARS ENDED JUNE 30**

	<u>2019</u>	<u>2018</u>	<u>2017</u>	<u>2016</u>	<u>2015</u>
<b>Total Pension Liability</b>					
Service cost	\$ 356,029	327,121	317,486	305,585	305,969
Interest on the total pension liability	1,235,531	1,139,634	1,088,258	983,372	965,923
Difference between expected and actual experience	362,244	405,080	(172,565)	(319)	(634,560)
Changes of assumptions	-	-	-	633,616	-
Benefit payments, including refunds	(608,325)	(519,874)	(538,368)	(426,370)	(367,586)
Net Change In Total Pension Liability	<u>1,345,479</u>	<u>1,351,961</u>	<u>694,811</u>	<u>1,495,884</u>	<u>269,746</u>
 Total Pension Liability Beginning	<u>17,165,747</u>	<u>15,813,786</u>	<u>15,118,975</u>	<u>13,623,091</u>	<u>13,353,345</u>
 Total Pension Liability Ending (a)	<u><u>\$ 18,511,226</u></u>	<u><u>17,165,747</u></u>	<u><u>15,813,786</u></u>	<u><u>15,118,975</u></u>	<u><u>13,623,091</u></u>
 <b>Plan Fiduciary Net Position</b>					
Contributions - employer	\$ 311,131	350,170	335,524	361,369	378,656
Net investment income	1,358,590	2,115,514	1,913,224	(45,247)	287,873
Benefit payments, including refunds	(608,325)	(519,874)	(538,368)	(426,370)	(367,586)
Administrative expense	(16,782)	(11,609)	(11,126)	(10,264)	(10,719)
Other	232,217	(90,243)	28,433	215,352	142,869
Net Change In Plan Fiduciary Net Position	<u>1,276,831</u>	<u>1,843,958</u>	<u>1,727,687</u>	<u>94,840</u>	<u>431,093</u>
 Plan Fiduciary Net Position Beginning	<u>18,973,582</u>	<u>17,129,624</u>	<u>15,401,937</u>	<u>15,307,097</u>	<u>14,876,004</u>
 Plan Fiduciary Net Position Ending (b)	<u><u>\$ 20,250,413</u></u>	<u><u>18,973,582</u></u>	<u><u>17,129,624</u></u>	<u><u>15,401,937</u></u>	<u><u>15,307,097</u></u>
 <b>Net Pension Liability (Asset) (a)-(b)</b>	<u><u>\$ (1,739,187)</u></u>	<u><u>(1,807,835)</u></u>	<u><u>(1,315,838)</u></u>	<u><u>(282,962)</u></u>	<u><u>(1,684,006)</u></u>
  Plan Fiduciary Net Position as a Percentage of the Total Pension Liability	109.40 %	110.53	108.32	101.87	112.36
 Covered Payroll (for February 28/29 Valuation)	\$ 3,158,535	3,146,277	2,750,188	2,771,165	2,607,956
 Net Pension Liability (Asset) as a Percentage of Covered Payroll	(55.06) %	(57.46)	(47.85)	(10.21)	(64.57)

Notes:

Information is not available for fiscal years prior to 2015.

Schedule intended to show information for ten years, additional years' information will be displayed as it becomes available.

**CITY OF UNION, MISSOURI**  
**REQUIRED SUPPLEMENTAL INFORMATION - SCHEDULE OF PENSION CONTRIBUTIONS**  
**LAST TEN FISCAL YEARS**

	For The Years Ended June 30									
	2019	2018	2017	2016	2015	2014	2013	2012	2011	2010
Actuarially determined pension contribution	\$ 311,132	350,171	335,524	361,447	384,790	403,502	416,029	389,084	387,348	269,351
Contributions in relation to the actuarially determined contribution	311,133	350,171	335,524	361,447	378,579	381,806	342,729	320,182	291,608	266,429
Contribution Deficiency (Excess)	<u>\$ (1)</u>	<u>-</u>	<u>-</u>	<u>-</u>	<u>6,211</u>	<u>21,696</u>	<u>73,300</u>	<u>68,902</u>	<u>95,740</u>	<u>2,922</u>
Covered Payroll	\$ 3,227,500	3,182,558	2,925,672	2,750,146	2,589,507	2,610,079	2,509,187	2,530,307	2,504,645	2,502,921
Contributions as a percentage of Covered Payroll	9.64 %	11.00	11.47	13.14	14.62	14.63	13.66	12.65	11.64	10.64

Notes to schedule:

Valuation date:

Actuarially determined contribution rates are calculated as of February 28/29 prior to the end of the fiscal year in which contributions are reported.

Methods and assumptions used to determine contribution rates:

Actuarial cost method  
Amortization method

Entry age normal and modified terminal funding

A level percentage of payroll amortization method is used to amortize the UAAL over a closed period of years. If the UAAL (excluding the UAAL associated with benefit changes) is negative, then this amount is amortized over the greater of (i) the remaining initial amortization period or (ii) 15 years

Multiple bases from 12 to 15 years

5 years smoothed market; 20% corridor

3.25% wage inflation; 2.50% price inflation

3.25% to 6.55%; including wage inflation

7.25%, net of investment expenses

Experience-based table of rates that are specific to the type of eligibility condition

The healthy retiree mortality tables for post-retirement mortality were the RP - 2014 Healthy Annuitant mortality table for males and females. The disabled retiree mortality tables for post-retirement mortality were the RP-2014 disabled mortality table for males and females. The pre-retirement mortality tables used were the RP-2014 employees' mortality tables for males and females. Both the post-retirement and pre-retirement tables were adjusted for mortality improvement back to the observation period base year of 2006. The base year for males was then established to be 2017. Mortality rates for a particular calendar year are determined by applying the MP-2015 mortality improvement scale to the above described tables.

Remaining amortization period  
Asset valuation method  
Inflation  
Salary increases  
Investment rate of return  
Retirement age  
Mortality

Other information:

There were no benefit changes during the year.

**OTHER SUPPLEMENTAL INFORMATION SECTION**

**CITY OF UNION, MISSOURI**  
**OTHER SUPPLEMENTAL INFORMATION - COMBINING**  
**BALANCE SHEET - NONMAJOR GOVERNMENTAL FUNDS**  
**JUNE 30, 2019**

---

	<u>Special Revenue</u>		
	<u>Cemetery</u>	<u>Stormwater</u>	
	<u>Fund</u>	<u>Management</u>	<u>Total</u>
		<u>Fund</u>	
<b>ASSETS</b>			
Cash and investments	<u>\$ 87,160</u>	<u>65</u>	<u>87,225</u>
 <b>LIABILITIES AND FUND BALANCES</b>			
 <b>Liabilities</b>	 \$ -	 -	 -
 <b>Fund Balances</b>			
Restricted	<u>87,160</u>	<u>65</u>	<u>87,225</u>
 Total Liabilities And Fund Balances	 <u>\$ 87,160</u>	 <u>65</u>	 <u>87,225</u>

**CITY OF UNION, MISSOURI**  
**OTHER SUPPLEMENTAL INFORMATION - COMBINING**  
**STATEMENT OF REVENUES, EXPENDITURES, AND CHANGES**  
**IN FUND BALANCES - NONMAJOR GOVERNMENTAL FUNDS**  
**FOR THE YEAR ENDED JUNE 30, 2019**

---

	<u>Special Revenue</u>		
	<u>Cemetery</u>	<u>Stormwater</u>	
	<u>Fund</u>	<u>Management</u>	<u>Total</u>
		<u>Fund</u>	
<b>REVENUES</b>			
Investment income	\$ 1,315	1	1,316
<b>EXPENDITURES</b>	<u>-</u>	<u>-</u>	<u>-</u>
<b>REVENUES OVER EXPENDITURES</b>	1,315	1	1,316
<b>OTHER FINANCING SOURCE</b>			
Sale of capital assets	<u>710</u>	<u>-</u>	<u>710</u>
<b>NET CHANGES IN FUND BALANCES</b>	2,025	1	2,026
<b>FUND BALANCES, JULY 1</b>	<u>85,135</u>	<u>64</u>	<u>85,199</u>
<b>FUND BALANCES, JUNE 30</b>	<u>\$ 87,160</u>	<u>65</u>	<u>87,225</u>



**CITY OF UNION, MISSOURI**  
**OTHER SUPPLEMENTAL INFORMATION - SCHEDULE OF REVENUES,**  
**EXPENDITURES, AND CHANGE IN FUND BALANCE - BUDGET AND ACTUAL -**  
**CEMETERY FUND - SPECIAL REVENUE FUND**  
**FOR THE YEAR ENDED JUNE 30, 2019**

---

	<u>Original And Final Budget</u>	<u>Actual</u>	<u>Over (Under) Budget</u>
<b>REVENUES</b>			
Investment income	\$ 950	1,315	365
<b>OTHER FINANCING SOURCE</b>			
Sale of capital assets	<u>450</u>	<u>710</u>	<u>260</u>
<b>NET CHANGE IN FUND BALANCE</b>	<u><u>\$ 1,400</u></u>	2,025	<u><u>625</u></u>
FUND BALANCE, JULY 1		<u>85,135</u>	
<b>FUND BALANCE, JUNE 30</b>		<u><u>\$ 87,160</u></u>	

**CITY OF UNION, MISSOURI**  
**OTHER SUPPLEMENTAL INFORMATION - SCHEDULE OF REVENUES,**  
**EXPENDITURES, AND CHANGE IN FUND BALANCE - BUDGET AND ACTUAL -**  
**STORMWATER MANAGEMENT FUND - SPECIAL REVENUE FUND**  
**FOR THE YEAR ENDED JUNE 30, 2019**

---

	<u>Original Budget</u>	<u>Final Budget</u>	<u>Actual</u>	<u>Over (Under) Budget</u>
<b>REVENUES</b>				
Investment income	\$ 10	1	1	-
<b>EXPENDITURES</b>	<u>-</u>	<u>-</u>	<u>-</u>	<u>-</u>
<b>NET CHANGE IN FUND BALANCE</b>	<u>\$ 10</u>	<u>1</u>	1	<u>-</u>
FUND BALANCE, JULY 1			<u>64</u>	
<b>FUND BALANCE, JUNE 30</b>			<u>\$ 65</u>	

**CITY OF UNION, MISSOURI**  
**OTHER SUPPLEMENTAL INFORMATION - SCHEDULE OF**  
**REVENUES, EXPENSES, AND CHANGE IN NET POSITION -**  
**BUDGET AND ACTUAL - PROPRIETARY FUND**  
**FOR THE YEAR ENDED JUNE 30, 2019**

	<u>Original Budget</u>	<u>Final Budget</u>	<u>Actual</u>	<u>Over (Under) Budget</u>
<b>OPERATING REVENUES</b>				
Charges for services:				
Water	\$ 1,128,000	1,128,000	1,204,685	76,685
Sewer	885,000	885,000	897,852	12,852
Total Operating Revenues	<u>2,013,000</u>	<u>2,013,000</u>	<u>2,102,537</u>	<u>89,537</u>
<b>OPERATING EXPENSES</b>				
Depreciation	-	760,658	760,658	-
Water	971,897	1,000,233	712,628	(287,605)
Sewer	1,698,377	1,119,757	871,140	(248,617)
Total Operating Expenses	<u>2,670,274</u>	<u>2,880,648</u>	<u>2,344,426</u>	<u>(536,222)</u>
<b>OPERATING LOSS</b>	<u>(657,274)</u>	<u>(867,648)</u>	<u>(241,889)</u>	<u>625,759</u>
<b>NONOPERATING REVENUES (EXPENSES)</b>				
Taxes	972,200	972,200	1,006,889	34,689
Investment income	40,000	40,000	62,797	22,797
Miscellaneous	32,000	32,000	32,442	442
Interest expense and fiscal charges	<u>(129,179)</u>	<u>(180,451)</u>	<u>(176,012)</u>	<u>(4,439)</u>
Total Nonoperating Revenues (Expenses)	<u>915,021</u>	<u>863,749</u>	<u>926,116</u>	<u>62,367</u>
<b>INCOME BEFORE CAPITAL CONTRIBUTIONS</b>	<u>257,747</u>	<u>(3,899)</u>	<u>684,227</u>	<u>688,126</u>
<b>CAPITAL CONTRIBUTIONS</b>	<u>-</u>	<u>102,368</u>	<u>102,368</u>	<u>-</u>
<b>CHANGE IN NET POSITION</b>	<u>\$ 257,747</u>	<u>98,469</u>	<u>786,595</u>	<u>688,126</u>
<b>NET POSITION, JULY 1</b>			<u>24,335,030</u>	
<b>NET POSITION, JUNE 30</b>			<u>\$ 25,121,625</u>	

**CITY OF UNION, MISSOURI**  
**OTHER SUPPLEMENTAL INFORMATION - STATEMENT OF**  
**CHANGES IN ASSETS AND LIABILITIES - AGENCY FUND**  
**FOR THE YEAR ENDED JUNE 30, 2019**

---

	<b>Balance June 30 2018</b>	<b>Additions</b>	<b>Deductions</b>	<b>Balance June 30 2019</b>
<b>POLICE EVIDENCE ACCOUNT</b>				
<b>ASSETS</b>				
Cash	<u>\$ 23,188</u>	<u>11,969</u>	<u>-</u>	<u>35,157</u>
<b>LIABILITIES</b>				
Due to others	<u>\$ 23,188</u>	<u>11,969</u>	<u>-</u>	<u>35,157</u>
 <b>DONATIONS - VETERANS MEMORIAL</b>				
<b>ASSETS</b>				
Cash	<u>\$ -</u>	<u>32</u>	<u>-</u>	<u>32</u>
<b>LIABILITIES</b>				
Due to others	<u>\$ -</u>	<u>32</u>	<u>-</u>	<u>32</u>
 <b>TOTAL</b>				
<b>ASSETS</b>				
Cash	<u>\$ 23,188</u>	<u>12,001</u>	<u>-</u>	<u>35,189</u>
<b>LIABILITIES</b>				
Due to others	<u>\$ 23,188</u>	<u>12,001</u>	<u>-</u>	<u>35,189</u>

**SECTION III**  
**STATISTICAL INFORMATION SECTION**

---

This part of the City's CAFR presents detailed information as a context for understanding what the information in the financial statements, note disclosures, and required supplemental information says about the City's overall financial health.

<b>Contents</b>	<b>Pages</b>
<b>Financial Trends</b>	
These schedules contain trend information to help the reader understand how the City's financial performance and well-being have changed over time.	67 - 72
<b>Revenue Capacity</b>	
These schedules contain information to help the reader assess the City's most significant local revenue source, the property tax.	73 - 79
<b>Debt Capacity</b>	
These schedules present information to help the reader assess the affordability of the City's current levels of outstanding debt and the City's ability to issue additional debt in the future.	80 - 82
<b>Demographic and Economic Information</b>	
These schedules offer demographic and economic indicators to help the reader understand the environment within which the City's financial activities take place.	83 - 84
<b>Operating Information</b>	
These schedules contain service and infrastructure data to help the reader understand how the information in the City's financial report relates to the services the City provides and the activities it performs.	85 - 88
<b>Bond Annual Report</b>	
These schedules contain information regarding City finances, the water and sewer system, and the debt of the City.	89 - 91

Sources: Unless otherwise noted, the information in these schedules is derived from the CAFRs for the relevant year.

**CITY OF UNION, MISSOURI**  
**NET POSITION BY COMPONENT**  
**LAST TEN FISCAL YEARS**

	<b>June 30</b>									
	<b>2019</b>	<b>2018</b>	<b>2017</b>	<b>2016</b>	<b>2015</b>	<b>2014</b>	<b>2013</b>	<b>2012</b>	<b>2011</b>	<b>2010</b>
<b>Governmental Activities</b>										
Net investment in capital assets	\$ 30,650,931	30,856,813	28,576,778	27,869,962	23,457,748	21,635,231	19,463,972	18,304,918	17,653,232	16,321,346
Restricted	2,436,913	2,290,798	1,443,921	1,631,227	1,590,863	1,379,599	1,479,671	1,359,364	1,191,705	1,531,227
Unrestricted	6,539,032	6,478,365	7,931,830	7,147,545	9,802,932	8,041,078	7,857,748	7,198,153	6,525,788	6,121,098
Total Governmental Activities Net Position	<u>\$ 39,626,876</u>	<u>39,625,976</u>	<u>37,952,529</u>	<u>36,648,734</u>	<u>34,851,543</u>	<u>31,055,908</u>	<u>28,801,391</u>	<u>26,862,435</u>	<u>25,370,725</u>	<u>23,973,671</u>
<b>Business-type Activities</b>										
Net investment in capital assets	\$ 17,661,023	17,378,212	17,258,929	17,346,106	16,730,302	16,683,541	16,789,109	16,858,850	17,347,435	16,395,600
Restricted	1,571,461	1,508,481	1,432,581	1,423,415	1,340,360	1,241,400	1,192,258	1,566,063	1,604,313	916,044
Unrestricted	5,889,141	5,448,337	5,034,318	4,247,784	4,375,578	3,668,023	3,582,049	2,876,798	1,707,939	1,406,527
Total Business-type Activities Net Position	<u>\$ 25,121,625</u>	<u>24,335,030</u>	<u>23,725,828</u>	<u>23,017,305</u>	<u>22,446,240</u>	<u>21,592,964</u>	<u>21,563,416</u>	<u>21,301,711</u>	<u>20,659,687</u>	<u>18,718,171</u>
<b>Primary Government</b>										
Net investment in capital assets	\$ 48,311,954	48,235,025	45,835,707	45,216,068	40,188,050	38,318,772	36,253,081	35,163,768	35,000,667	32,716,946
Restricted	4,008,374	3,799,279	2,876,502	3,054,642	2,931,223	2,620,999	2,671,929	2,925,427	2,796,018	2,447,271
Unrestricted	12,428,173	11,926,702	12,966,148	11,395,329	14,178,510	11,709,101	11,439,797	10,074,951	8,233,727	7,527,625
Total Primary Government Net Position	<u>\$ 64,748,501</u>	<u>63,961,006</u>	<u>61,678,357</u>	<u>59,666,039</u>	<u>57,297,783</u>	<u>52,648,872</u>	<u>50,364,807</u>	<u>48,164,146</u>	<u>46,030,412</u>	<u>42,691,842</u>

Source: Basic financial statements.

For fiscal year 2011 GASB 54 was implemented.

GASB 63 and 65 were implemented in 2013.

GASB 68 implemented in 2015.

2018 began reporting amounts restricted for pension.

**CITY OF UNION, MISSOURI**  
**CHANGE IN NET POSITION**  
**LAST TEN FISCAL YEARS**

	For The Years Ended June 30									
	2019	2018	2017	2016	2015	2014	2013	2012	2011	2010
<b>EXPENSES</b>										
<b>Governmental Activities</b>										
General government	\$ 2,387,889	2,457,685	2,448,423	1,893,711	1,716,889	1,850,323	1,728,837	1,750,622	1,704,662	1,570,872
Public safety	1,919,394	1,784,002	1,662,628	1,595,776	1,504,173	1,537,825	1,506,263	1,472,750	1,439,221	1,449,950
Street department	2,203,031	1,917,288	1,796,693	1,686,000	1,715,515	1,780,407	1,432,954	1,454,059	1,408,636	1,229,372
Refuse collection and other	809,167	768,487	731,434	699,791	692,069	719,926	685,319	654,684	629,811	592,645
Culture and recreation	1,479,610	1,121,841	954,488	953,042	860,273	770,646	783,062	815,708	806,043	769,928
Planning and development	379,130	1,075,965	556,386	424,833	307,401	327,350	443,223	424,311	467,831	438,776
Building maintenance	135,363	149,756	167,907	142,412	128,228	93,606	91,195	88,191	98,971	89,991
Interest and fiscal charges	92,055	100,566	106,936	115,633	148,166	-	-	-	-	27,938
Total Governmental Activities Expenses	9,405,639	9,375,590	8,424,895	7,511,198	7,072,714	7,080,083	6,670,853	6,660,325	6,555,175	6,169,472
<b>Business-type Activities</b>										
Water/sewer	2,520,438	2,638,234	2,461,730	2,440,268	2,378,160	2,336,858	2,443,427	2,377,714	2,074,655	1,911,378
Total Primary Government Expenses	11,926,077	12,013,824	10,886,625	9,951,466	9,450,874	9,416,941	9,114,280	9,038,039	8,629,830	8,080,850
<b>PROGRAM REVENUES</b>										
<b>Governmental Activities</b>										
Charges for services:										
General government	129,323	224,021	180,656	259,327	166,000	122,774	130,513	118,259	101,071	129,462
Public safety	574,584	298,539	276,501	189,185	209,644	254,751	220,525	252,748	233,018	192,358
Street department	21,542	19,798	21,748	21,991	11,379	12,574	11,500	274	-	5,105
Refuse collection and other	820,459	781,762	749,329	717,605	709,069	736,780	702,390	667,132	643,247	603,578
Culture and recreation	254,136	267,150	202,641	200,141	178,943	175,487	190,601	228,111	226,439	217,506
Planning and development	1,027	8,161	1,356	50	125	1,659	7,139	1,397	70	711
Operating grants and contributions	439,200	1,147,550	656,919	439,634	422,298	415,010	446,878	360,839	354,900	383,815
Capital grants and contributions	476,173	1,664,075	1,011,854	1,484,603	1,093,648	1,318,271	1,027,181	540,529	1,480,900	1,198,805
Total Governmental Activities Program Revenues	2,716,444	4,411,056	3,101,004	3,312,536	2,791,106	3,037,306	2,736,727	2,169,289	3,039,645	2,731,340
<b>Business-type Activities</b>										
Charges for services:										
Water/sewer	2,102,537	2,129,177	1,926,207	1,923,603	1,857,564	1,856,495	1,874,208	1,878,594	1,808,937	1,783,723
Capital grants and contributions	102,368	102,368	102,368	102,368	127,036	-	-	97,081	693,237	229,045
Total Business-type Activities Program Revenues	2,204,905	2,231,545	2,028,575	2,025,971	1,984,600	1,856,495	1,874,208	1,975,675	2,502,174	2,012,768
Total Primary Government Program Revenues	4,921,349	6,642,601	5,129,579	5,338,507	4,775,706	4,893,801	4,610,935	4,144,964	5,541,819	4,744,108

(Continued)



**CITY OF UNION, MISSOURI**  
**CHANGE IN NET POSITION (Continued)**  
**LAST TEN FISCAL YEARS**

	For The Years Ended June 30									
	2019	2018	2017	2016	2015	2014	2013	2012	2011	2010
<b>NET REVENUES (EXPENSES)</b>										
Governmental activities	(6,689,195)	(4,964,534)	(5,323,891)	(4,281,608)	(4,281,608)	(4,042,777)	(3,934,126)	(4,491,036)	(3,515,530)	(3,438,132)
Business-type activities	(315,533)	(509,057)	(535,523)	(393,560)	(393,560)	(480,363)	(569,219)	(402,039)	427,519	101,390
Total Primary Government Net Revenues (Expenses)	(7,004,728)	(5,473,591)	(5,859,414)	(4,675,168)	(4,675,168)	(4,523,140)	(4,503,345)	(4,893,075)	(3,088,011)	(3,336,742)
<b>GENERAL REVENUES AND OTHER CHANGE IN NET POSITION</b>										
<b>Governmental Activities</b>										
Taxes:										
Sales	3,248,211	2,994,725	2,875,083	2,831,617	2,755,362	2,608,141	2,480,898	2,480,898	2,402,085	2,327,690
Property	1,348,324	1,281,140	1,204,468	1,148,240	1,147,858	1,115,757	1,100,576	1,100,576	1,073,319	1,056,084
Franchise	1,631,821	1,779,831	1,628,176	1,576,331	1,596,160	1,632,039	1,579,086	1,579,086	1,472,202	1,338,241
Other	243,735	410,668	417,449	233,666	462,647	294,420	496,310	496,310	222,428	275,591
Investment income	132,959	126,383	124,055	170,785	133,627	103,809	127,053	127,053	125,950	139,420
Grants and contributions not restricted to specific programs	68,420	-	347,091	-	-	-	-	-	-	-
Gain on sale of capital assets	710	240	12,503	11,525	131,975	1,225	64,840	64,840	108,083	1,625
Miscellaneous	15,915	44,994	18,861	23,689	352,098	16,259	24,319	24,319	31,153	624,010
Transfers	-	-	-	-	-	525,644	-	-	-	-
Total Governmental Activities General Revenues And Other Change In Net Position	6,690,095	6,637,981	6,627,686	5,995,853	6,579,727	6,297,294	5,873,082	5,873,082	5,435,220	5,762,661
<b>Business-type Activities</b>										
Sales taxes	1,006,889	998,241	958,372	943,861	918,393	869,029	826,940	826,940	800,671	775,930
Investment income	62,797	45,071	40,008	38,377	53,942	58,322	69,261	69,261	92,604	46,675
Grants and contributions not restricted to specific programs	-	44,528	73,459	68,295	70,092	71,450	79,655	81,308	41,430	-
Miscellaneous	32,442	30,419	172,207	37,197	43,252	36,754	55,006	60,423	56,656	64,517
Transfers	-	-	-	-	-	(525,644)	-	-	-	-
Total Business-type Activities General Revenues And Other Change In Net Position	1,102,128	1,118,259	1,244,046	1,087,730	1,085,679	509,911	1,030,862	1,037,932	991,361	887,122
Total Primary Government General Revenues And Other Change In Net Position	7,792,223	7,756,240	7,871,732	7,083,583	7,665,406	6,807,205	6,903,944	6,911,014	6,426,581	6,649,783
<b>CHANGE IN NET POSITION</b>										
Governmental activities	900	1,673,447	1,303,795	1,797,191	2,298,119	2,254,517	1,938,956	1,382,046	1,919,690	2,324,529
Business-type activities	786,595	609,202	708,523	571,065	692,119	29,548	461,643	635,893	1,418,880	988,512
Total Primary Government	\$ 787,495	2,282,649	2,012,318	2,368,256	2,990,238	2,284,065	2,400,599	2,017,939	3,338,570	3,313,041

Source: Basic financial statements.

For fiscal year 2011 GASB 54 was implemented.

**CITY OF UNION, MISSOURI**  
**FUND BALANCES OF GOVERNMENTAL FUNDS**  
**LAST TEN FISCAL YEARS**

		June 30									
		2019	2018	2017	2016	2015	2014	2013	2012	2011	2010
<b>General Fund</b>											
Reserved	\$	-	-	-	-	-	-	-	-	-	131,912
Unreserved		-	-	-	-	-	-	-	-	-	6,000,991
Nonspendable		2,493,326	2,531,533	2,619,560	2,133,664	105,016	100,613	89,764	89,500	100,000	-
Committed		3,524,000	3,524,000	2,472,000	3,288,500	3,002,000	2,511,326	2,218,000	3,211,500	2,615,000	-
Assigned		1,498,654	246,901	-	-	4,793,000	4,720,000	4,700,000	3,350,000	3,250,000	-
Unassigned		1,438,068	2,682,925	3,913,709	2,885,761	359,739	868,993	978,148	606,003	602,675	-
Total General Fund	\$	8,954,048	8,985,359	9,005,269	8,307,925	8,259,755	8,200,932	7,985,912	7,257,003	6,567,675	6,132,903
<b>Park Fund</b>											
Reserved	\$	-	-	-	-	-	-	-	-	-	33,662
Unreserved		-	-	-	-	-	-	-	-	-	23,986
Nonspendable		67,968	40,000	40,000	40,000	30,000	35,000	37,500	37,500	35,000	-
Restricted		1,113	1,099	4,166	-	3,527,955	-	-	-	-	-
Assigned		-	-	-	2,748,239	193,419	88,378	263,916	263,091	178,446	-
Unassigned		(2,398,184)	(2,462,079)	(2,555,768)	(2,606,656)	-	-	-	-	-	-
Total Park Fund	\$	(2,329,103)	(2,420,980)	(2,511,602)	181,583	3,751,374	123,378	301,416	300,591	213,446	57,648
<b>Transportation Tax Fund</b>											
Unreserved	\$	-	-	-	-	-	-	-	-	-	725,344
Restricted		803,895	770,770	1,360,116	1,355,745	1,272,245	1,160,530	1,078,727	987,060	842,110	-
Total Transportation Tax Fund	\$	803,895	770,770	1,360,116	1,355,745	1,272,245	1,160,530	1,078,727	987,060	842,110	725,344
<b>2006B Certificates Of Participation Fund</b>											
Reserved	\$	-	-	-	-	-	-	-	-	-	227,502
Unreserved		-	-	-	-	-	-	-	-	-	295,134
Total 2006B Certificates Of Participation Fund	\$	-	-	-	-	-	-	-	-	-	522,636
<b>All Other Governmental Funds</b>											
Unreserved, reported in:											
Special Revenue Funds	\$	-	-	-	-	-	-	-	-	-	145,703
Debt Service Funds		-	-	-	-	-	-	-	-	-	79,896
Restricted		87,225	85,199	83,868	82,082	80,601	76,899	74,714	71,713	136,149	-
Unassigned		-	-	-	-	-	(4,578)	(4,578)	(4,578)	-	-
Total All Other Governmental Funds	\$	87,225	85,199	83,868	82,082	80,601	72,321	70,136	67,135	136,149	225,599

Source: Basic financial statements.

For fiscal year 2011 GASB 54 was implemented. See Note A-14 of the notes to financial statements.

**CITY OF UNION, MISSOURI**  
**CHANGES IN FUND BALANCES - GOVERNMENTAL FUNDS**  
**LAST TEN FISCAL YEARS**

For The Years Ended June 30										
	2019	2018	2017	2016	2015	2014	2013	2012	2011	2010
<b>REVENUES</b>										
Taxes	\$ 6,893,606	6,870,017	6,542,095	6,207,414	6,378,772	6,059,868	6,033,921	5,628,461	5,429,442	5,324,980
Fines and forfeitures	79,960	96,320	90,781	83,210	103,705	128,137	139,622	167,352	145,259	112,758
Licenses and permits	110,401	200,308	152,841	235,599	135,898	99,252	106,492	96,899	80,384	90,640
Charges for services	1,530,537	1,216,107	1,100,971	1,000,227	969,521	1,006,397	939,849	944,377	918,383	865,901
Intergovernmental	455,819	2,367,375	1,042,784	1,357,442	751,876	1,111,810	1,079,341	561,638	583,357	1,124,971
Donations	-	2,575	203,650	-	-	-	-	-	-	-
Investment income	132,959	126,383	124,055	170,785	133,627	103,809	127,053	122,852	125,950	139,420
Rental income	17,900	23,557	27,815	23,160	29,860	22,970	23,905	21,360	20,421	36,701
Miscellaneous	73,683	107,856	199,425	74,267	386,611	52,555	76,690	465,267	63,106	659,360
Total Revenues	<u>9,294,865</u>	<u>11,010,498</u>	<u>9,484,417</u>	<u>9,152,104</u>	<u>8,889,870</u>	<u>8,584,798</u>	<u>8,526,873</u>	<u>8,008,206</u>	<u>7,366,302</u>	<u>8,354,731</u>
<b>EXPENDITURES</b>										
General government	2,441,755	2,961,013	2,396,347	2,000,320	1,979,958	2,515,187	1,685,363	1,850,752	1,652,222	1,570,176
Public safety	1,847,740	1,686,851	1,593,685	1,520,661	1,454,805	1,474,488	1,432,260	1,360,128	1,336,848	1,363,023
Street department	790,175	673,751	758,896	552,595	1,031,489	1,025,890	595,350	1,115,223	923,210	720,193
Refuse collection and other	820,431	768,487	731,434	699,791	692,069	719,926	685,319	654,684	629,811	592,645
Culture and recreation	988,451	987,503	904,581	736,231	841,190	673,652	654,695	706,866	690,242	682,274
Planning and development	350,324	1,045,819	540,982	334,864	283,981	303,949	295,725	277,659	309,874	285,952
Building maintenance	61,579	72,645	90,268	76,988	72,254	65,589	70,629	72,213	75,025	72,569
Stormwater management	-	-	4,392,413	-	-	-	-	71,602	14,777	-
Capital outlay	1,683,752	3,018,820	-	6,363,839	2,366,375	2,213,241	2,349,780	1,175,516	1,226,190	1,905,086
Debt service:										
Principal	220,000	210,000	205,000	185,000	-	-	-	-	-	1,095,250
Interest and fiscal charges	96,429	103,392	110,115	130,505	-	-	-	-	-	27,938
Bond issuance costs	-	-	-	-	85,635	-	-	-	-	-
Total Expenditures	<u>9,300,636</u>	<u>11,528,281</u>	<u>11,723,721</u>	<u>12,600,794</u>	<u>8,807,756</u>	<u>8,991,922</u>	<u>7,769,121</u>	<u>7,284,643</u>	<u>6,858,199</u>	<u>8,315,106</u>
<b>REVENUES OVER (UNDER) EXPENDITURES</b>										
	<u>(5,771)</u>	<u>(517,783)</u>	<u>(2,239,304)</u>	<u>(3,448,690)</u>	<u>82,114</u>	<u>(407,124)</u>	<u>757,752</u>	<u>723,563</u>	<u>508,103</u>	<u>39,625</u>
<b>OTHER FINANCING SOURCES (USES)</b>										
Sale of capital assets	33,068	480	33,100	12,050	134,700	2,450	66,650	128,846	109,783	3,250
Other reimbursement	68,420	-	216,520	-	-	-	-	-	-	-
Issuance of certificates of participation	-	-	-	-	3,590,000	-	-	-	-	-
Transfers in	1,869,275	2,624,000	1,654,050	1,508,500	1,736,826	1,920,847	1,068,000	1,016,500	1,015,000	1,069,500
Transfers out	<u>(1,869,275)</u>	<u>(2,624,000)</u>	<u>(1,654,050)</u>	<u>(1,508,500)</u>	<u>(1,736,826)</u>	<u>(1,395,203)</u>	<u>(1,068,000)</u>	<u>(1,016,500)</u>	<u>(1,015,000)</u>	<u>(1,069,500)</u>
Total Other Financing Sources (Uses)	<u>101,488</u>	<u>480</u>	<u>249,620</u>	<u>12,050</u>	<u>3,724,700</u>	<u>528,094</u>	<u>66,650</u>	<u>128,846</u>	<u>109,783</u>	<u>3,250</u>
<b>NET CHANGES IN FUND BALANCES</b>										
	<u>\$ 95,717</u>	<u>(517,303)</u>	<u>(1,989,684)</u>	<u>(3,436,640)</u>	<u>3,806,814</u>	<u>120,970</u>	<u>824,402</u>	<u>852,409</u>	<u>617,886</u>	<u>42,875</u>
Debt service as a percentage of noncapital expenditures	4.11 %	3.96	4.53	5.00	N/A	N/A	N/A	N/A	N/A	13.50

Source: Basic financial statements.

For fiscal year 2011 GASB 54 was implemented.

**CITY OF UNION, MISSOURI**  
**PROGRAM REVENUES BY FUNCTIONS/PROGRAMS**  
**LAST TEN FISCAL YEARS**

FUNCTIONS/PROGRAMS	June 30									
	2019	2018	2017	2016	2015	2014	2013	2012	2011	2010
<b>Primary Government</b>										
<b>Governmental Activities</b>										
General government	\$ 129,323	224,021	180,656	259,327	166,000	122,774	130,513	118,259	101,071	129,462
Public safety	598,137	322,500	311,594	189,185	236,155	290,362	295,310	273,857	286,204	295,769
Street department	905,616	1,811,874	1,221,644	21,991	1,475,359	1,710,244	1,402,786	880,533	1,778,114	1,482,449
Refuse collection and other	820,459	781,762	749,329	717,605	709,069	736,780	702,390	667,132	643,247	603,578
Culture and recreation	261,882	550,649	425,792	200,141	204,398	175,487	201,589	228,111	230,939	219,371
Planning and development	1,027	720,250	211,989	50	125	1,659	7,139	1,397	70	711
Total Governmental Activities	2,716,444	4,411,056	3,101,004	1,388,299	2,791,106	3,037,306	2,739,727	2,169,289	3,039,645	2,731,340
<b>Business-type Activities</b>										
Water/sewer	2,204,905	2,129,177	1,926,207	1,923,603	1,984,600	1,856,495	1,874,208	1,975,675	2,502,174	2,012,768
Total Primary Government	<u>\$ 4,921,349</u>	<u>6,540,233</u>	<u>5,027,211</u>	<u>3,311,902</u>	<u>4,775,706</u>	<u>4,893,801</u>	<u>4,613,935</u>	<u>4,144,964</u>	<u>5,541,819</u>	<u>4,744,108</u>

Source: Basic financial statements.

**CITY OF UNION, MISSOURI**  
**TAX REVENUES BY SOURCE - GOVERNMENTAL FUNDS**  
**LAST TEN FISCAL YEARS**

<b>Fiscal Year</b>	<b>Sales Taxes</b>	<b>Property Taxes</b>	<b>Franchise Taxes</b>	<b>Other Taxes</b>	<b>Total</b>
2019	\$ 3,248,211	\$ 1,361,938	\$ 1,631,821	\$ 651,636	\$ 6,893,606
2018	2,994,725	1,273,293	1,779,831	822,168	6,870,017
2017	2,875,083	1,210,194	1,628,176	828,642	6,542,095
2016	2,831,617	1,163,808	1,576,331	635,658	6,207,414
2015	2,755,362	1,168,816	1,596,160	858,434	6,378,772
2014	2,608,141	1,145,869	1,632,039	673,819	6,059,868
2013	2,480,898	1,477,627	1,579,086	496,310	6,033,921
2012	2,492,053	1,062,033	1,473,767	600,608	5,628,461
2011	2,402,085	1,035,513	1,472,202	519,642	5,429,442
2010	2,327,690	1,090,725	1,338,241	568,324	5,324,980

Source: Required supplemental information and basic financial statements.

**CITY OF UNION, MISSOURI**  
**ASSESSED AND ESTIMATED ACTUAL VALUE OF TAXABLE PROPERTY**  
**LAST TEN FISCAL YEARS**

Fiscal Year	Calendar Year	Real Estate			Personal Property	
		Residential Property	Commercial Property	Agricultural Property	Assessed Value	Estimated Actual Value
2019	2018	\$ 87,760,353	\$ 55,295,443	\$ 1,476,277	\$ 144,532,073	\$ 646,997,162
2018	2017	85,643,159	52,990,237	1,487,812	140,121,208	628,746,392
2017	2016	79,002,791	51,589,269	1,578,735	132,170,795	590,176,754
2016	2015	77,983,393	48,847,762	1,752,664	128,583,819	577,693,700
2015	2014	76,966,596	51,658,063	1,685,829	130,310,488	580,567,369
2014	2013	75,746,784	51,827,926	1,748,840	129,323,550	575,203,220
2013	2012	80,476,030	53,340,027	1,489,762	135,305,819	602,660,320
2012	2011	79,389,683	52,131,019	1,516,901	133,037,603	593,390,713
2011	2010	79,960,246	53,557,035	1,559,335	135,076,616	601,203,593
2010	2009	78,452,987	50,862,259	1,546,562	130,861,808	584,742,034

Fiscal Year	Calendar Year	Railroad And Utility		Total		Total Direct Tax Rate	Ratio Of Total Assessed Value To Total Estimated Actual Value
		Assessed Value	Estimated Actual Value	Assessed Value	Estimated Actual Value		
2019	2018	\$ 4,988,603	\$ 15,481,390	\$ 188,295,427	\$ 791,727,722	0.7281	23.8 %
2018	2017	4,945,066	15,392,940	182,660,308	769,452,779	0.7230	23.7
2017	2016	5,684,278	18,389,586	171,951,387	722,220,720	0.7230	23.8
2016	2015	6,126,315	18,968,876	167,023,964	704,375,343	0.7210	23.7
2015	2014	5,818,945	20,082,985	167,918,578	706,614,171	0.7020	23.8
2014	2013	6,521,584	22,345,194	166,528,520	699,826,367	0.7000	23.8
2013	2012	5,745,131	17,802,475	170,287,511	717,917,998	0.6707	23.7
2012	2011	5,332,187	16,527,233	167,291,604	696,683,388	0.6683	24.0
2011	2010	4,668,891	14,458,562	166,145,690	694,862,704	0.6559	23.9
2010	2009	5,370,843	16,644,781	164,402,083	685,895,111	0.6500	24.0

Notes: Assessments are determined by the Assessor of Franklin County as of January 1. Property has an assessed value to estimated actual value as follows: commercial real estate 32%, residential real estate 19%, agricultural real estate 12%, and personal property 33-1/3%.

Source: Franklin County Assessor

**CITY OF UNION, MISSOURI**  
**PROPERTY TAX RATES - DIRECT AND ALL OVERLAPPING GOVERNMENTS**  
**LAST TEN FISCAL YEARS**

	<b>June 30</b>									
	<b>2019</b>	<b>2018</b>	<b>2017</b>	<b>2016</b>	<b>2015</b>	<b>2014</b>	<b>2013</b>	<b>2012</b>	<b>2011</b>	<b>2010</b>
City of Union:										
General Fund	0.587	0.583	0.583	0.581	0.566	0.564	0.541	0.538	0.529	0.524
Union Park Fund	0.141	0.140	0.140	0.140	0.136	0.136	0.130	0.130	0.127	0.126
Total City Of Union	0.728	0.723	0.723	0.721	0.702	0.700	0.671	0.668	0.656	0.650
Overlapping governments:										
State of Missouri	0.030	0.030	0.030	0.030	0.030	0.030	0.030	0.030	0.030	0.030
Franklin County	0.915	0.921	0.921	0.919	0.939	0.941	0.903	0.910	0.090	0.881
Union Fire Protection District	0.453	0.129	0.125	0.124	0.130	0.138	0.130	0.273	0.269	0.269
Union Ambulance District	0.021	0.021	0.046	0.179	0.177	0.177	0.168	0.168	0.165	0.165
Union School District	3.840	3.840	3.840	3.750	3.750	3.750	3.750	3.750	3.700	3.700
East Central College	0.447	0.454	0.454	0.454	0.454	0.454	0.440	0.439	0.433	0.433
The Franklin County Library District	0.197	0.201	0.201	0.201	0.201	0.083	0.078	0.078	0.076	0.076

Source: Franklin County Assessor (rates stated per \$100 assessed valuation)

**CITY OF UNION, MISSOURI**  
**PRINCIPAL TAXPAYERS**  
**CURRENT YEAR AND NINE YEARS AGO**

Taxpayer	2019			2010		
	Taxable Assessed Valuation	Rank	Percentage Of Total City Taxable Assessed Value	Taxable Assessed Valuation	Rank	Percentage Of Total City Taxable Assessed Value
LSC Communications US LLC	\$ 3,164,260	1	1.68 %	-	-	- %
Heat & Control LLC	2,840,634	2	1.51	-	-	-
Stoneridge Rentals LLC	1,719,170	3	0.91	-	-	-
Independence Valley LLC	1,575,151	4	0.84	-	-	-
Spire Missouri LLC	1,403,450	5	0.75	-	-	-
Crystal MO	1,370,595	6	0.73	-	-	-
Earle M Jorgensen Company	1,339,520	7	0.71	-	-	-
Walmart	1,328,000	8	0.70	1,904,742	2	1.16
Black Creek Corporation	1,188,787	9	0.63	864,783	7	0.53
Silgan Plastic Food Container	1,070,720	10	0.57	1,161,894	3	0.71
Union Housing Association	-	-	-	1,140,336	4	0.69
Esselte Pendaflex Corp	-	-	-	3,812,169	1	2.32
MHB LLC	-	-	-	1,113,712	5	0.68
United Bank of Union	-	-	-	919,566	6	0.56
Bequette Properties	-	-	-	796,176	8	0.48
MO Natural Gas	-	-	-	734,410	9	0.45
Franklin Co Medical Outreach	-	-	-	696,304	10	0.42
Total	<u>\$ 17,000,287</u>		<u>9.03 %</u>	<u>\$ 13,144,092</u>		<u>8.00 %</u>

Source: Franklin County IT Department.



**CITY OF UNION, MISSOURI**  
**PROPERTY TAX LEVIES AND COLLECTIONS**  
**LAST TEN FISCAL YEARS**

<b>Fiscal Year</b>	<b>Tax Levy Year</b>	<b>Net Tax Levy</b>	<b>Current Tax Collections</b>	<b>Percent Collected As Current</b>	<b>Delinquent Tax Collections (1)</b>	<b>Total Tax Collections</b>	<b>Total Collections As Percent Of Levy</b>	<b>Outstanding Delinquent Taxes</b>	<b>Outstanding Delinquent Taxes As Percent Of Levy</b>
2019	2018	\$ 1,337,827	\$ 1,331,056	99.5 %	\$ 36,692	\$ 1,367,748	102.2 %	\$ 6,771	0.51 %
2018	2017	1,291,633	1,249,922	96.8	25,344	1,275,266	98.7	41,711	3.23
2017	2016	1,211,127	1,179,772	97.4	28,678	1,208,450	99.8	31,355	2.59
2016	2015	1,166,002	1,070,309	91.8	33,033	1,103,342	94.6	95,693	8.21
2015	2014	1,149,427	1,053,733	91.7	40,718	1,094,451	95.2	95,694	8.33
2014	2013	1,121,360	1,079,064	96.2	61,893	1,140,957	101.7	42,296	3.77
2013	2012	1,101,864	1,015,714	92.2	57,210	1,072,924	97.4	86,150	7.82
2012	2011	1,085,033	976,278	90.0	59,212	1,035,490	95.4	108,755	10.02
2011	2010	1,061,052	939,777	88.6	138,001	1,077,778	101.6	121,275	11.43
2010	2009	1,037,528	926,243	89.3	86,171	1,012,414	97.6	111,285	10.73

Source: The City's tax database and Franklin County Collector's Office

(1) Data for delinquent tax collection, excluding penalties and interest, is not available by levy year. The City is working with the County to obtain this information and more time is needed to make system updates to track this information.

**CITY OF UNION, MISSOURI**  
**SALES TAX RATES, DIRECT AND OVERLAPPING GOVERNMENTS**  
**LAST TEN FISCAL YEARS**

<b>Fiscal Year</b>	<b>City</b>				<b>County</b>	<b>State</b>	<b>State Conservation</b>	<b>State Parks And Soil</b>	<b>Fire District</b>	<b>Ambulance District</b>	<b>Total Direct And Overlapping</b>
	<b>General</b>	<b>Transportation</b>	<b>Water/ Wastewater</b>	<b>Total Direct Rate</b>							
2019	1.0000	0.5000	0.5000	2.0000	2.2500	4.0000	0.1250	0.1000	0.5000	0.5000	9.4750
2018	1.0000	0.5000	0.5000	2.0000	1.7500	4.0000	0.1250	0.1000	0.5000	0.5000	8.9750
2017	1.0000	0.5000	0.5000	2.0000	1.7500	4.0000	0.1250	0.1000	0.5000	0.5000	8.9750
2016	1.0000	0.5000	0.5000	2.0000	1.7500	4.0000	0.1250	0.1000	0.5000	0.5000	8.9750
2015	1.0000	0.5000	0.5000	2.0000	1.7500	4.0000	0.1250	0.1000	0.5000	0.5000	8.9750
2014	1.0000	0.5000	0.5000	2.0000	1.7500	4.0000	0.1250	0.1000	0.5000	0.5000	8.9750
2013	1.0000	0.5000	0.5000	2.0000	1.7500	4.0000	0.1250	0.1000	0.5000	0.5000	8.9750
2012	1.0000	0.5000	0.5000	2.0000	1.7500	4.0000	0.1250	0.1000	0.5000	0.5000	8.9750
2011	1.0000	0.5000	0.5000	2.0000	1.7500	4.0000	0.1250	0.1000	0.5000	0.5000	8.9750
2010	1.0000	0.5000	0.5000	2.0000	1.7500	4.0000	0.1250	0.1000	0.5000	0.5000	8.9750

Source: Missouri Department of Revenue

**CITY OF UNION, MISSOURI**  
**SALES/USE TAX REVENUE BY TYPE**  
**LAST TEN FISCAL YEARS**

<b><u>Fiscal Year</u></b>	<b><u>General</u></b>	<b><u>Transportation</u></b>	<b><u>Water/ Wastewater</u></b>	<b><u>Total</u></b>
2019	\$ 2,013,779	\$ 1,006,890	\$ 1,006,888	\$ 4,027,557
2018	1,995,966	997,984	997,981	3,991,931
2017	1,916,722	958,361	958,372	3,833,455
2016	1,887,745	943,872	943,861	3,775,478
2015	1,836,909	918,453	918,393	3,673,755
2014	1,738,761	869,380	869,029	3,477,170
2013	1,653,932	826,966	826,940	3,307,838
2012	1,661,368	830,684	830,707	3,322,759
2011	1,601,390	800,695	800,672	3,202,757
2010	1,551,793	775,897	775,930	3,103,620
Increase 2010 to 2019	30 %	30 %	26 %	30 %

**CITY OF UNION, MISSOURI**  
**RATIOS OF OUTSTANDING DEBT BY TYPE**  
**LAST TEN FISCAL YEARS**

<b>Fiscal Year</b>	<b>Governmental Activities</b>	<b>Business-type Activities</b>				<b>Total Primary Government</b>	<b>Percentage Of Personal Income (1)</b>		<b>Per Capita (1)</b>
	<b>Certificates Of Participation</b>	<b>Capital Lease Obligation</b>	<b>Certificates Of Participation</b>	<b>Revenue Bonds</b>	<b>Recovery Zone Bonds</b>				
2019	\$ 2,770,000	\$ 267,391	\$ 2,240,000	\$ 2,378,600	\$ -	\$ 7,655,991	-	%	\$ 699
2018	2,990,000	340,985	2,495,000	2,564,500	-	8,390,485	-		766
2017	3,200,000	410,854	2,745,000	-	2,790,000	9,145,854	-		835
2016	3,405,000	477,183	2,990,000	-	2,950,000	9,822,183	-		896
2015	3,590,000	540,156	3,230,000	-	3,105,000	10,465,156	-		989
2014	-	599,938	3,470,000	-	3,260,000	7,329,938	-		693
2013	-	656,694	3,670,000	-	3,410,000	7,736,694	-		740
2012	-	710,576	3,465,000	-	3,560,000	7,735,576	-		758
2011	-	761,730	3,620,000	-	3,705,000	8,086,730	-		793
2010	-	810,294	3,770,000	-	-	4,580,294	-		472

(1) See Demographics and Economic Statistics Table

Note: Details regarding the City's outstanding debt can be found in the notes to financial statements.

**CITY OF UNION, MISSOURI**  
**DIRECT AND OVERLAPPING GOVERNMENTAL ACTIVITIES DEBT**  
**JUNE 30, 2019**

---

<b>Name Of Governmental Unit</b>	<b>Debt Outstanding</b>	<b>Estimated Percentage Applicable</b>	<b>Estimated Share Of Overlapping Debt</b>
East Central College	\$ 11,603,400	11.00 %	\$ 1,276,374
Union School District	23,640,000	45.00	10,638,000
	35,243,400		11,914,374
City direct debt	2,770,000	100.00 %	2,770,000
Total Direct And Overlapping Debt	<u>\$ 38,013,400</u>		<u>\$ 14,684,374</u>

Source: Information was obtained by contacting the taxing jurisdiction.

The percentage applicable to the City is based on the jurisdiction's assessed value within the boundaries of the City.

**CITY OF UNION, MISSOURI**  
**COMPUTATION OF LEGAL DEBT MARGIN**  
**LAST TEN FISCAL YEARS**

	<b>Fiscal Years Ended June 30</b>									
	<b>2019</b>	<b>2018</b>	<b>2017</b>	<b>2016</b>	<b>2015</b>	<b>2014</b>	<b>2013</b>	<b>2012</b>	<b>2011</b>	<b>2010</b>
Assessed Value	<u>\$ 188,295,427</u>	<u>182,660,308</u>	<u>171,951,387</u>	<u>167,023,964</u>	<u>167,918,578</u>	<u>166,528,520</u>	<u>170,287,511</u>	<u>167,291,604</u>	<u>166,145,690</u>	<u>164,402,083</u>
Debt limit - 10% of total assessed valuation	<u>\$ 18,829,543</u>	<u>18,266,031</u>	<u>17,195,139</u>	<u>16,702,396</u>	<u>16,791,858</u>	<u>16,652,852</u>	<u>17,028,751</u>	<u>16,729,160</u>	<u>16,614,569</u>	<u>16,440,208</u>
Amount of debt subject to limit:										
Total bonded debt	-	-	-	-	-	-	-	-	-	-
Less - Amounts available in Debt Service Fund	<u>-</u>	<u>-</u>	<u>-</u>	<u>-</u>	<u>-</u>	<u>-</u>	<u>-</u>	<u>-</u>	<u>-</u>	<u>-</u>
Total Amount Of Debt Subject To Limit	<u>-</u>	<u>-</u>	<u>-</u>	<u>-</u>	<u>-</u>	<u>-</u>	<u>-</u>	<u>-</u>	<u>-</u>	<u>-</u>
Legal Debt Margin	<u>\$ 18,829,543</u>	<u>18,266,031</u>	<u>17,195,139</u>	<u>16,702,396</u>	<u>16,791,858</u>	<u>16,652,852</u>	<u>17,028,751</u>	<u>16,729,160</u>	<u>16,614,569</u>	<u>16,440,208</u>

Note: Bonded indebtedness is limited by Sections 95.111 and 95.120 of the Missouri Revised Statutes (1986) to 10% of the assessed value of taxable tangible property.

**CITY OF UNION, MISSOURI**  
**DEMOGRAPHIC AND ECONOMIC STATISTICS**  
**LAST TEN FISCAL YEARS**

<b>Fiscal Year</b>	<b>Population (1)</b>	<b>Median Household Income (2)</b>	<b>Personal Income</b>	<b>Per Capita Income (3)</b>	<b>Public School Enrollment (4)</b>	<b>Unemployment Rate (5)</b>
2019	11,277	\$ 43,985	N/A	N/A	3,194	3.2 %
2018	11,277	43,985	N/A	N/A	3,174	4.8
2017	11,277	43,380	N/A	N/A	3,037	4.8
2016	10,957	42,315	N/A	N/A	3,107	5.1
2015	10,859	43,532	N/A	N/A	3,118	5.8
2014	10,577	41,452	N/A	N/A	3,075	6.4
2013	10,456	45,871	N/A	\$ 35,811	3,150	7.5
2012	10,258	52,267	N/A	34,762	3,161	8.6
2011	10,204	49,034	N/A	N/A	3,018	10.2
2010	9,714	N/A	N/A	N/A	3,054	10.5

Sources:

- (1) U.S. Census
- (2) Regional Commerce and Growth Figures
- (3) U.S. Bureau of Economic Analysis
- (4) Missouri Department of Elementary and Secondary Education
- (5) U.S. Department of Labor Statistics (not seasonally adjusted)

**CITY OF UNION, MISSOURI**  
**PRINCIPAL EMPLOYERS**  
**CURRENT YEAR AND NINE YEARS AGO**

<u>Employer</u>	<u>2019</u>			<u>2010</u>		
	<u>Employees</u>	<u>Rank</u>	<u>Percent Of Total City Employment</u>	<u>Employees</u>	<u>Rank</u>	<u>Percent Of Total City Employment</u>
Union RXI School District	393	1	14.27 %	369	1	14.25 %
Franklin County Government	322	2	11.69	309	3	11.93
LSC Communications (Tops Slt, Inc.) (Esselte)	291	3	10.57	361	2	13.94
Silgan Plastic Containers	260	4	9.44	181	5	6.99
Climate Express	230	5	8.35	166	6	6.41
East Central College	200	6	7.26	98	9	3.78
Buddeez (American Plastics)	200	7	7.26	-		-
The Children's Factory	150	8	3.56	92	10	3.55
Gateway Extrusions Ltd	140	9	5.08	-		-
Pharma Tech Industries	122	10	4.43	202	4	7.80
Lozier Store Fixtures (Spartan Showcase)	-		-	111	7	4.29
Sunset Health Care	-		-	100	8	3.86
The Children's Factory	-		-	92	10	3.55
Total	<u>2,308</u>		<u>81.91 %</u>	<u>2,081</u>		<u>80.35 %</u>

Source: The City's business license database



**CITY OF UNION, MISSOURI**  
**FULL-TIME EQUIVALENT CITY GOVERNMENT EMPLOYEES BY FUNCTION/PROGRAM**  
**LAST TEN FISCAL YEARS**

FUNCTION/PROGRAM	Full-Time Equivalent Employees As Of June 30									
	2019	2018	2017	2016	2015	2014	2013	2012	2011	2010
Administration department:										
City administrator	1	1	1	1	1	1	1	1	1	1
Administrative assistant	1	1	1	1	1	1	1	1	1	1
City clerk	1	1	1	1	1	1	1	1	1	1
Deputy city clerk/accounting clerk	1	1	1	1	1	1	1	1	1	1
Finance officer	1	1	1	1	1	1	1	1	1	1
Custodian	1	1	1	1	1	1	1	1	1	1
City attorney	1	1	1	1	1	1	1	1	1	1
City collector	1	1	1	1	1	1	1	1	1	1
Engineering department:										
City engineer	1	1	1	1	1	1	1	1	1	1
Engineering assistant	1	1	1	1	1	1	1	1	1	1
Building inspector	1	1	1	1	1	1	1	1	1	1
Economic development department:										
Economic director/Assistant City Administrator	1	1	1	1	1	1	1	1	1	1
Assistant	1	1	1	1	1	1	1	1	1	1
Parks and recreation department:										
Parks and recreation director	1	1	1	1	1	1	1	1	1	1
Program coordinator	1	1	1	1	1	1	1	1	1	1
Recreation coordinator	1	-	-	-	-	-	-	-	-	-
Maintenance - Foreman	2	2	2	1	1	1	1	1	1	1
Maintenance	4	4	4	3	3	3	3	2	2	2
Public works department:										
Public works director	1	1	1	1	1	1	1	1	1	1
Street foreman	1	1	1	1	1	1	1	1	1	1
Street field foreman	1	-	1	1	1	1	1	1	1	1
Street laborer I	1	-	-	-	-	-	-	-	-	-
Street laborer II	3	2	1	1	2	2	4	3	3	3
Street laborer III	-	3	1	1	-	-	-	-	-	-
Street equipment operator I	2	-	-	-	-	-	-	-	-	-
Street equipment operator II	1	1	4	4	4	4	-	-	-	-
Street equipment operator III	-	1	1	1	1	1	-	1	1	1
Street equipment operator IV	-	-	-	-	-	-	2	2	2	2

(Continued)

**CITY OF UNION, MISSOURI**  
**FULL-TIME EQUIVALENT CITY GOVERNMENT EMPLOYEES BY FUNCTION/PROGRAM (Continued)**  
**LAST TEN FISCAL YEARS**

FUNCTION/PROGRAM	Full-Time Equivalent Employees As Of June 30									
	2019	2018	2017	2016	2015	2014	2013	2012	2011	2010
Public works department (Continued):										
Street mechanic I	1	1	1	1	1	1	1	1	1	1
Street mechanic II	1	1	1	1	1	1	1	1	1	1
Water/Wastewater department:										
Water/Wastewater foreman	1	1	1	1	1	1	1	1	1	1
Field foreman	1	1	1	1	1	1	1	1	1	1
Class C operator II	1	1	1	1	1	1	1	1	1	1
Water/Distribution operator	2	2	2	2	2	2	2	2	2	1
Water/Wastewater Apprentice	3	3	3	2	2	2	2	3	3	4
Utility billing clerk	1	1	1	1	1	1	1	1	1	1
Accounting clerk	1	1	1	1	1	1	1	1	1	1
Police:										
Police chief	1	1	1	1	1	1	1	1	1	1
Captain	1	1	1	1	1	1	1	1	1	1
Police sergeant	3	4	4	4	4	4	4	4	4	4
Detective Sergeant	-	1	1	1	1	1	1	1	1	1
Detective	2	2	1	1	1	1	1	1	1	1
Patrol Lieutenant	-	1	1	1	1	1	1	1	1	1
School Resource Officer	6	5	4	3	3	3	2	2	2	2
Zoning Patrol Officer	1	1	1	1	1	1	1	1	1	1
Patrol officer	11	8	9	9	9	9	10	9	9	9
Police clerks	1	1	1	1	1	1	1	1	1	1
Police Service Technician	1	1	1	1	1	1	1	1	1	1
Municipal Court Department:										
Municipal court clerk	1	1	1	1	1	1	1	1	1	1
Municipal judge	1	1	1	1	1	1	1	1	1	1

Source: City payroll department records

**CITY OF UNION, MISSOURI**  
**OPERATING INDICATORS BY FUNCTIONS/PROGRAMS**  
**LAST TEN FISCAL YEARS**

FUNCTIONS/PROGRAMS	June 30									
	2019	2018	2017	2016	2015	2014	2013	2012	2011	2010
Police - patrol:										
Arrests	671	926	1,088	824	765	816	1,063	746	787	705
Traffic citations	991	1,509	1,626	1,614	1,354	1,720	1,972	2,141	2,857	1,733
Crime reports	2,404	3,147	3,201	3,110	2,932	3,342	3,418	3,291	3,633	4,034
Accident reports	460	437	491	506	466	505	509	447	493	521
Public works:										
Road repair - tons of mix	1,360	1,498	1,302	1,385	2,004	2,310	1,485	1,858	1,543	1,686
Traffic control signs serviced	204	189	235	146	215	232	245	293	202	294
Storm sewer grates and lids inspected	1,129	1,866	1,032	1,166	1,107	1,080	1,160	1,134	1,130	1,069
Parks:										
Acres mowed and maintained	116	231	231	231	231	187	187	187	187	187
Trees and shrubs planted	11	56	141	-	-	6	-	10	-	8
Engineering/building inspection:										
Rezoning applications	-	5	3	1	1	-	-	1	-	1
Building permits issued	240	393	308	284	289	238	230	197	190	194
Water permits issued	61	199	120	90	108	50	89	74	58	50
Sewer permits issued	58	188	119	86	104	43	82	73	55	48
Finance and administration:										
Business licenses issued	647	658	657	662	648	653	658	667	694	655
Payroll checks issued	554	928	1,263	1,986	4,111	3,952	4,034	4,245	4,002	4,102
Accounts payable processed	2,099	2,194	2,075	2,073	1,996	2,064	2,087	2,209	2,459	2,216
Requests for public records	30	15	13	13	9	9	3	2	2	4
Liquor licenses issued	59	61	18	52	17	36	87	57	62	50

Source: City records - various departments listed

**CITY OF UNION, MISSOURI**  
**CAPITAL ASSETS STATISTICS BY FUNCTION/PROGRAMS**  
**LAST TEN FISCAL YEARS**

<b>FUNCTION/PROGRAM</b>	<b>2019</b>	<b>2018</b>	<b>2017</b>	<b>2016</b>	<b>2015</b>	<b>2014</b>	<b>2013</b>	<b>2012</b>	<b>2011</b>	<b>2010</b>
Police:										
Stations	1	1	1	1	1	1	1	1	1	1
Marked patrol units	13	11	11	11	11	11	11	10	10	13
Public works:										
Miles of streets	88.88	88.88	88.88	88.88	88.88	88.10	88.10	87.96	87.96	87.59
Traffic lights and signals	-	-	-	-	-	-	-	1	2	2
Miles of sanitary sewer line	79.36	78.95	78.95	78.95	78.95	76.80	76.80	76.60	76.28	75.55
Number of meters	6,969	4,664	4,494	4,494	4,402	4,742	4,238	4,161	4,017	3,905
Miles of water line	87.05	86.76	86.76	86.76	86.76	83.92	83.92	83.76	83.74	83.14
Number of pumping stations	16	16	16	16	16	16	16	16	15	16
Parks and recreation:										
Number of parks	13	7	7	7	6	5	5	5	5	5
Acres of parks	116	222	222	222	178	178	178	178	178	178
Tennis courts	4	4	4	4	4	4	4	4	4	4
Swimming pools	1	1	1	1	1	1	1	1	1	1
Volleyball courts	2	2	2	2	2	2	2	2	2	2
Basketball courts	2	4	4	4	4	4	4	4	4	4
Baseball/softball fields	13	14	14	14	9	9	9	9	9	9
Playgrounds	10	8	7	5	5	5	5	5	5	5
Soccer fields	8	8	8	8	5	5	5	5	5	5
Splash pad	1	1	1	1	-	-	-	-	-	-

Source: City finance department records

Note: No capital asset indicators are available for the Engineering/Building Inspector and Administration functions.