

Osceola County Recreation Plan 2021-2025



(Recommend changing to a better photo)



Osceola County, Michigan
301 W. Upton
Reed City, MI 49677

This Page Purposely Left Blank

DRAFT

TABLE OF CONTENTS

INTRODUCTION	3
Chapter One COMMUNITY DESCRIPTION	4
Chapter Two ADMINISTRATIVE STRUCTURE	5
Osceola County Parks Commission	5
Osceola County Parks Department	6
Sources of Funding	7
Current Year and Projected Annual Budgets	7
Volunteers Involved in Park and Recreation Programs	7
Relationships with Other Public Agencies	8
Chapter Three RECREATION INVENTORY	9
Inventory Process and Procedures	9
Osceola County Parks Inventory	10
Recreational Boating Facilities Inventory	12
Other Publically Owned Recreation Assets Inventory	13
Privately Owned Recreation Assets Inventory	18
Chapter Four PLANNING AND PUBLIC INPUT PROCESS	20
Planning Process	20
Public Input	20
Chapter Five GOALS AND OBJECTIVES	22
Chapter Six ACTION PROGRAM	23
Appendix A Osceola County Community Profile	
Appendix B Osceola County Parks Organizational Chart	
Appendix C 2021 Budget	
Appendix D Osceola County Park Maps	
Appendix E Post-Completion Self-Certification Report	
Appendix F Recreation Survey and Results	
Appendix G Public Hearing Documentation (notices, agenda, minutes with resolution)	

INTRODUCTION

The 2021-2025 Osceola County Recreation Plan replaces the County's February 2017 Recreation Plan.

PURPOSE

The *Osceola County Recreation Plan 2021-2025* is non-directive in nature. While non-directive it fulfills several important objectives:

- It helps ensure coordination between the Parks Commission and local units of government and governmental entities.
- It gives the Parks Commission an opportunity to receive formal feedback from the public.
- It provides the Parks Commission an opportunity to reflect and focus on the direction of their efforts.
- It supports Goal #11, Action #2 of the Osceola County, Michigan Future Land Use Plan; *"The County Planning Commission and the County Board of Commissioners will maintain an up-to-date countywide recreation plan and apply for appropriate grants to improve recreation opportunities in Osceola County."*
- It allows the Parks Commission to apply for grants through the Michigan Natural Resources Trust Fund. In order to do so the Plan must be filed with, and approved by, the Michigan Department of Natural Resources.

POINTS OF CONTACT

Development of the Osceola County Recreation Plan was a joint effort of the Osceola County Parks Department (Parks Department) and Osceola County Community Development Office (Community Development Office).

Parks Department
301 W. Upton, Reed City, MI 49677
(231) 832-6130

Community Development Office
301 W. Upton, Reed City, MI 49677
(231) 832-7397

Chapter 1: COMMUNITY DESCRIPTION



Osceola County is a rural county of 23,290¹ residents located in the west central portion of Michigan’s Lower Peninsula. In addition to county government there are twenty-two other local units of government in Osceola County; two cities, four villages, and 16 townships; however, the *2021-2025 Osceola County Recreation Plan* (Plan) was prepared for the Osceola County Parks Commission (Parks Commission). **The Plan focuses strictly on the development of the parks operated by the Parks Commission and any future land acquisitions the Parks Commission may make.**

Osceola County’s Community Profile which includes demographics is included as Attachment A, *Osceola County Community Profile*.

¹ 2015-2019 American Community Survey

Chapter 2: ADMINISTRATIVE STRUCTURE

OSCEOLA COUNTY PARKS COMMISSION

The Osceola County Parks Commission (Parks Commission) was formed in 1992 under Public Act 261 of 1965. The Parks Commission consists of ten members, each appointed by the Osceola County Board of Commissioners (Board of Commissioners). Appointments are made for 2-year terms and individuals may be appointed to recurring terms. Members on the Parks Commission represent specific interests:

- a. Drain Commissioner or representative
- b. Road Commission representative
- c. Planning Commission representative
- d. County Commissioners – 3
- e. At Large – 4

The Parks Commission has overall responsibility for the operation of both County parks. Although the Parks Commission has overall responsibility it does have to comply with County policies. The Parks Commission:

- a. May recommend applying for or accepting a grant; however, final approval rests with the Board of Commissioners.
- b. May recommend the purchase of real estate; however, final approval rests with the Board of Commissioners.
- c. Must follow all County *Personnel and Operations Policies & Procedures*.

In order to efficiently accomplish its responsibilities a Parks Department has been established and two subcommittees have been formed. The subcommittees are made up of Parks Commission members. Members are assigned to the subcommittees each year at a meeting of the full Parks Commission.

- a. The Finance Subcommittee meets monthly from May through October, with the dates at the call of the Chair. The Finance Subcommittee:
 - Reviews park claims and vendor bids submitted for park projects, then makes recommendations to the full Parks Commission which has final approval.
 - Oversees projects and purchases for compliance with policies, purchasing requirements, and funding availability.

- Reviews and makes recommendations to the full Parks Commission for the upcoming budget year.
- b. The Personnel Subcommittee meets as needed at the call of the Chair. The Personnel Subcommittee:
 - Evaluates the Parks Director's job performance and reviews the Parks Director's evaluations of park staff.
 - Maintains responsibility of the interviewing process for new park managers.
 - Maintains responsibility for personnel issues at the parks.

Appendix C, *Osceola County Parks Organizational Chart*, shows the administrative relationship of each of the subcommittees within the Osceola County Parks system.

OSCEOLA COUNTY PARKS DEPARTMENT

Day-to-day operations of the parks are accomplished by the Osceola County Parks Department (Parks Department). The Parks Department consists of a Parks Director, an Administrative Assistant/Bookkeeper, two Park Managers, and park staff. Appendix B, *Osceola County Parks Organizational Chart*, shows the relationship of Parks Department personnel within the Parks system.

The Parks Director and Administrative Assistant/Bookkeeper are year-around, part-time employees. The Parks Director and Administrative Assistant/Bookkeeper have the flexibility to adjust their hours throughout the year so they can work more hours during busier times of the year.

Park Managers and park staff are seasonal employees that are employed from several weeks before the parks open until several weeks after the parks close. During this time these individuals take up residence in the park where they are employed. Although not necessarily all inclusive, Park Managers and staff receive training on:

- a. Water well testing
- b. Equipment inventory and maintenance
- c. County and Parks policies and procedures
- d. Campsite appearance
- e. Gatehouse operations
- f. Boat rentals
- g. Receipts review and reconciliation
- h. Supply inventory
- i. First aid and CPR

SOURCES OF FUNDING

Osceola County parks are not supported by yearly tax appropriations. Operations, maintenance, and recreation programming are fully funded from revenue generated by camping, vehicle permits, and miscellaneous sales. Capital improvements and large equipment purchases are also funded from the same sources; however, depending on the project and cost, grant funds may also be sought to help offset costs.

CURRENT YEAR AND PROJECTED ANNUAL BUDGETS

The Parks Commission follows the County budgeting process. Following recommendations from the Finance Committee, the Parks Commission submits an annual budget to the Board of Commissioners. The Board of Commissioners has final approval of the budget, as it is part of the County's public budget hearing under Uniform Accounting and Budgeting Act requirements.

Expenses beyond capital improvements are not projected beyond one year in advance. Capital improvements are projected on a five year basis (see Chapter Six, *Action Program*). The Parks Commission's 2021 Budget has been set at \$339,471. This is a 5.9% increase from the 2020 budget. The current year budget, by line item, is included as Appendix C, *2021 Budget*.

Once the budget has been approved the Parks Commission delegates spending authority. The following amounts were delegated during the 2020 camping season:

- a. Park Managers – Up to \$200
- b. Parks Director – Up to \$500
- c. Finance Committee – Up to \$3,000
- d. Parks Committee – Over \$3,000

VOLUNTEERS INVOLVED IN PARK AND RECREATION PROGRAMS

Both Crittenden Park and Rose Lake Park have a volunteer program. Individuals can volunteer 26 hours of time and in return receive one week of free camping. This includes utilities and the use of all park facilities.

Currently volunteer opportunities are available on a weekly, monthly, and seasonal basis. Three seasonal slots are available at Crittenden Park and four seasonal slots are available at Rose Lake Park. There are not a predetermined number of weekly or monthly slots at either park.

Volunteers perform many types of work. Examples include, but are not limited to; mowing, assisting at the paddle boat rental, assisting at the miniature golf, and utilizing special skills.

RELATIONSHIPS WITH OTHER PUBLIC AGENCIES

On a day-to-day basis the Parks Department operates independently of private organizations, school districts, and other public agencies; however, the Parks Department does work cooperatively with other agencies and County departments on an occasional basis. Examples include, but are not necessarily limited to:

- a. Project RED (Rural Education Days): Each year Rose Lake Park partners with Michigan State University Extension (MSUE) and each of the four school districts in the County to provide an educational day targeted toward 3rd and 4th graders.
- b. Marketing and Fund Development: The Community Development Office assists in developing the County Recreation Plan, grant writing, and helping the Parks maintain an online presence.
- c. Staff Orientation: Each year, before the parks open, the Parks Department holds a staff orientation for all park employees. Training is provided by several County departments. The Sheriff's Department presents information on crime prevention and response, Emergency Medical Services (EMS) presents information on responding to medical situations, and the Emergency Management Division presents information on response to natural disasters.
- d. CPR and First Aid Training: Once a year EMS provides CPR and first aid training to all park employees.

Chapter 3: RECREATION INVENTORY

INVENTORY PROCESS AND PROCEDURES

An inventory of recreational facilities in Osceola County was completed and includes a detailed Osceola County parks inventory, a detailed inventory of recreational boating facilities owned by the Parks Commission, and a brief inventory of other publically and privately-owned recreation assets in the County. The inventories were completed by verifying information in the 2017 Recreation Plan, performing site visits at Osceola County Parks, and conducting additional online research on publically and privately owned facilities.

The Osceola County Parks Inventory includes an assessment of each park for people with disabilities. This assessment included both the facilities within the park as well as the access routes to them. Checklists from the Institute for Human Centered Design (www.ADAchecklist.org) were used to help complete each assessment. The completed checklists are maintained in the Parks Administrative Office. The following checklists were used:

- a. Priority 1 – Approach & Entrance Checklist
- b. Priority 2 – Access to Goods & Services Checklist
- c. Priority 3 – Toilet Rooms Checklist
- d. Priority 4 – Additional Access Checklist
- e. Play Areas Checklist
- f. Fishing Piers & Platforms Checklist
- g. Recreational Boating Checklist (Rose Lake only)
- h. Sports Activities, Team or Player Seating, Exercise Machines & Equipment, Bowling Lanes, Saunas & Steam Rooms, and Shooting Facilities Checklist

The following rating system was used:

- 1 = none of the site elements meet 2010 ADA Standards for Accessible Design
- 2 = some of the site elements meet 2010 ADA Standards for Accessible Design
- 3 = most of the site elements meet 2010 ADA Standards for Accessible Design
- 4 = all of the site elements meet 2010 ADA Standards for Accessible Design
- 5 = the facility meets the Principles of Universal Design

The Osceola County Parks Inventory also includes a Use Assessment Score related to the size, quality, and condition of the amenities and facilities within the park. The following rating system was used:

- Excellent – size and quality needs ideally met; anticipate preventative maintenance only
- Good – size and quality needs usually met; occasional repairs required
- Fair – size and quality needs somewhat met; repairs equal to or beyond expectations
- Poor – size and quality needs barely met, requires extensive maintenance or upgrade
- Unsatisfactory – size and quality needs not met; unusable

OSCEOLA COUNTY PARKS INVENTORY

The Osceola County Parks system is comprised of two parks. Rose Lake Park, the larger of the two parks, is located approximately four miles northeast of the Village of LeRoy. Crittenden Park, the smaller park, is located approximately two miles south of Sears in Orient Township. Appendix D, *Osceola County Park Maps*, shows exact locations.

Rose Lake Park

17726 Youth Drive, LeRoy, MI 49655

Size: 48 acres

Description: Special Use - Rose Lake Park is set adjacent to Rose Lake among beautiful pines and hardwoods. It serves the needs of both day-users and campers. Day-users typically enter the park to use the beach, playground equipment, and picnic/group meeting facilities. Campers also enjoy these amenities, but stay for a day, week, month, or the entire season. Campers are also more likely to use the boat launch.

Service Area: Rose Lake Park has a large service area. Day users are almost exclusively Osceola County or neighboring county residents. Campers include Osceola County residents; however, many are from out of the area to include some out-of-state campers.

Recreation Activities and Support Facilities: The campground features a number of activities and amenities. Listed below are each of these amenities, and when applicable, followed by a Use Assessment Score:

- 151 modern campsites – **Fair**
- 12 primitive campsites – **Excellent**
- 100' swimming beach
- 18 hole mini-golf course – **Excellent**
- 2 large pavilions and grills for groups – **Good**
- 3 modern bathhouses with showers and flush toilets – **Good**
- 2 playgrounds – **Good**
- Boat launch facility – **Excellent**
- Dump station – **Good**
- Campground store – **Good**
- Shuffleboard court – **Fair**
- Basketball court – **Fair**
- Baseball diamond – **Poor**
- Dock/Pier – **Excellent**
- T-Shaped Fishing Dock (75' x 4' with 20' x 5' end) – **Excellent**

Accessibility Evaluation: 2; Completed checklists are maintained in the Parks Administrative Office. Actions to address ADA compliance are included in the Action Program chapter which begins on page 23.

Site Development Plan: A Site Development Plan has not been completed.

Maps: Park maps are included as Appendix E, *Osceola County Park Maps*.

DNR Grant History: Rose Lake Park received a 2012 Michigan Natural Resources Trust Fund grant for \$37,600 (TF12-002). The grant partially funded an upgrade to the south restroom and two adjacent campsites which were upgraded to meet ADA standards. A conversion has not occurred. The Post Completion Self Certification Report was submitted to DNR as a separate document in the MiRecGrants system; however, a copy is included in Appendix E, *Post-Completion Self-Certification Report*.

Crittenden Park

3641 S. 50th Avenue, Sears, MI 49679

Size: 10 acres

Description: Special Use – Crittenden Park borders the eastern shore of Big Lake in a grassy setting with many large shade trees. It serves the needs of both day-users and campers. Day-users typically enter the park to use the beach, playground equipment, and picnic/group meeting facilities. Campers also enjoy these amenities, but stay for a day, week, month, or the entire season. Some campers use the DNR boat launch on the western shore of the lake and then dock their boat at the park.

Service Area: Crittenden Park has a large service area. Day users are almost exclusively Osceola County or neighboring county residents. Campers include Osceola County residents; however, many are from out of the area to include some out-of-state campers. This is particularly true each July when the City of Ewart hosts the annual Dulcimer Festival.

Recreational Activities and Support Facilities: The campground features a number of activities and amenities. Listed below are each of these amenities, and when applicable, followed by a Use Assessment Score:

- 70 sites with water and electrical service and 9 full hookup sites – **Excellent**
- 10 rustic sites – **Good**
- Pavilion and grills for groups – **Good**
- Campground store – **Fair**
- Playground – **Good**
- Basketball court – **Good**
- Volleyball court – **Good**
- Swimming
- Adjacent to DNR boat launch
- Fishing Dock (50' x 4')
- Modern restrooms with showers – **Poor**
- Dump station – **Good**

Accessibility Evaluation: 2; Completed checklists are maintained in the Parks Administrative Office. Actions to address ADA compliance are included in the Action Program chapter which begins on page 23.

Site Development Plan: A Site Development Plan has not been completed.

Maps: Park maps are included as Appendix D, *Osceola County Park Maps*.

DNR Grant History: No part of Crittenden Park was acquired nor ever developed with Land and Water Conservation Funds; Michigan Natural Resources Trust Funds; Recreation Passport Grants, Clean Michigan Initiative Recreation Bond Funds; or 1988 Recreation Bond Funds.

RECREATIONAL BOATING FACILITIES INVENTORY

Rose Lake Park Boat Launch

Description: The Rose Lake Park boat launch is located in Rose Lake Park and provides access onto Rose Lake. It provides lake access for both park users and area residents who use it to put in and take out their boats each year before the park opens and after it closes.

Type Facility: The boat launch is considered a “Boating Access Site – A designated boat launch location with a ramp and supporting infrastructure.”

Size of Facility: The boat launch consist of a 30’ by 5’ ramp, 30’ skid pier, vehicle and trailer parking for approximately 25 vehicles, and a pit toilet.

ADA Accessibility: The boat launch is considered ADA Accessible

Site Development Plans: The boat launch was rebuilt in 2020. Plans to further develop the boat launch area are limited to removing some larger trees in order to open up the area and offer more parking.

Marketing, Events, and Partnerships: None

Dredging: Dredging is not required.

Annual Maintenance Schedule:

<u>Repairs and Maintenance</u> Performed by Parks Staff and funded through the Parks operational budget.	\$3,000
<u>Minor and Small Scale Infrastructure Replacement</u> Tree removal and stump grinding in parking area.	\$5,000
<u>Large Scale Maintenance and Replacement Schedule</u> Boat launch was rebuilt in 2020.	\$0

Crittenden Park Boat Dock

Description: Boaters can't launch their boat into Big Lake from Crittenden Park. Individuals must use the DNR boat launch just west of the park; however, once on the lake the Crittenden Park Boat Dock serves as a location where users can dock their boat.

Type Facility: The Crittenden Park Boat Dock is not considered a "boating facility".

Size of Facility: The boat dock is 50' long by 4' wide. Two boats can use the dock at one time.

ADA Accessibility: The boat dock is not considered ADA Accessible.

Site Development Plans: Currently, there are no plans to further develop the dock or surrounding area.

Marketing, Events, and Partnerships: None

Dredging: Dredging is not required.

Annual Maintenance Schedule:

<u>Repairs and Maintenance</u> Performed by Parks Staff and funded through the Parks operational budget.	\$750
<u>Minor and Small Scale Infrastructure Replacement</u> No expenses are anticipated over the next 5 years.	\$0
<u>Large Scale Maintenance and Replacement Schedule</u>	\$0

OTHER PUBLICALLY OWNED RECREATION ASSETS INVENTORY

Blodgett Landing Campground

603 E. Third St, Hersey, MI 49639

www.blodgettlandingcampground.com

29 acres; 29 full and partial-hook up sites, 8 rustic sites located at junction of Hersey and Muskegon Rivers

Bodary Field Complex

LeRoy, MI 49655

four baseball fields, two basketball/tennis courts, pavilion, outdoor ice rink maintained by LeRoy Area Sports Organization, volunteers, and Village

Cant Hook Park

Downtown Ewart, Ewart, MI 49631

https://www.ewart.org/our_community/city_parks.php

mini-park, picnic pavilion

County Fairgrounds

101 Recreation Ave, Ewart, MI 49631

www.osceolacountyfairgrounds.com

40 acres, 200+ campsites

hosts local, State, regional, and national events

Depot-Crossroads Park

200 N. Chestnut, Reed City, MI 49677

<https://reedcity.org/parks-music-art.php>

community meeting room, historic site of former railroad depot

intersection of White Pine Trail State Park and Pere Marquette State Trail

Ewart City Tennis Courts and Ballfield

Adjacent Ewart Elementary School, Ewart, MI 49631

https://www.ewart.org/our_community/city_parks.php

4 acre parcel

two tennis courts and ballfield

Ewart Elementary School

515 N. Cedar St, Ewart, MI 49631

<https://evartps.org/schools/elementary-school/>

multi-purpose field space, hard surfaced sport courts, playground equipment

Ewart Middle School

321 N. Hemlock

<https://evartps.org/schools/high-school/>

gym, shares other facilities with high school

Ewart High School

6221 95th Ave, Ewart, MI 49631

<https://evartps.org/schools/high-school/>

four baseball fields, gymnasium

Ewart Public Library

104 Main St, Ewart, 49631

https://www.ewart.org/our_community/library.php

meeting room, computers, historical society

Ewart Skate Park

Ewart, MI 49631

https://www.ewart.org/our_community/city_parks.php

33' x 103' park, space available for expansion

seasonal activities – skateboarding, rollerblading, BMX biking, outdoor ice rink

Guyton Park
Central Business District, Ewart, MI 49677
https://www.ewart.org/our_community/city_parks.php
0.4 acre, passive recreation
war memorial

G.T. Norman Elementary
338 W. Lincoln
<https://www.reedcityschools.org/o/gt-norman-elem>
gym, playground

Heritage Park
West end of city, Ewart, MI 49631
https://www.ewart.org/our_community/city_parks.php
0.75 acre, passive recreation
picnicking

LeRoy Community Library
104 W. Gilbert St, LeRoy, MI 49655
genealogy assistance provided by volunteer

LeRoy Museum
operated by LeRoy Historical Society and volunteers

Linear Park
Reed City, MI 49677
<https://reedcity.org/parks-music-art.php>
open air gazebo, Little Mac Bridge
connects Rambadt and Westerburg Parks; intersects White Pines Trail

Little Creek Park
20 Mile Road, Tustin, MI 49688
picnic tables & grills, playground, horseshoe pits

Marion Elementary School
510 W. Main St, Marion, MI 49665
<https://www.marion.k12.mi.us/o/mps/page/elementary-school--142>
soccer field, playground, walking track, gym

Marion Fairgrounds
P.O. Box 259, Marion, MI 49665
<https://marionfair.com>
25 acre site; barns, concession and display buildings
annual fair; amusements, music, activities

Marion High School / Middle School
2213 20 Mile Road, Marion, MI 49665
<https://www.marion.k12.mi.us/o/mps/page/jr-sr-high-school--24>
baseball field, football field, track, gym

Marion Public Library
120 E. Main St, Marion, MI 49665
<https://marionpubliclibrary.org/>

Mill Pond Park
Marion, MI 49665
<http://marionmichigan.org/millpond/>
fishing, pavilions, picnicking, nature viewing

Mosaic Park
Hersey, MI 49639
outdoor recreation

Pere Marquette State Trail
<https://www.trailink.com/trail/pere-marquette-state-trail/>
53 mile, hard surface trail
runs from Baldwin to Clare
24 miles go through Osceola County

Public Square
N. Hemlock St, Evart, MI 49631
https://www.evart.org/our_community/city_parks.php
2.5 acre park, adjacent to Middle School
volleyball and basketball courts, baseball field, playground

Pine River Elementary School
LeRoy, MI 49655
playground, gym

Rambadt Memorial Park
Park St, Reed City, MI 49677
<https://reedcity.org/parks-music-art.php>
33 acres, 13 full-hook up sites
play area, performance pavilion, nature trails

Reed City District Library
829 S. Chestnut, Reed City, MI 49677
WiFi

Reed City Middle School
233 W. Church, Reed City, 49677
<https://www.reedcityschools.org/o/rcms>
shares facilities with high school

Reed City High School
225 W. Church, Reed City 49677
<https://www.reedcityschools.org/o/rchs>
gym, football/soccer field, baseball field, gym

Old Rugged Cross Museum
4918 Park St, Reed City, MI 49677
<https://reedcity.org/old-rugged-cross-museum.php>
artifacts from Reverend and Mrs. George Bennard and early life in Reed City
Reed City Genealogical Society collection

Riverside Park East
Southeast corner of city, Ewart, MI 49631
https://www.ewart.org/our_community/city_parks.php
33 acre park, 15 primitive campsites and pavilion bathroom
multi-purpose trail loop, foot bridge, viewing platform

Riverside Park West
Southeast corner of city, Ewart, MI 49631
https://www.ewart.org/our_community/city_parks.php
17 acre park, 15 partial-hook up campsites
shuffleboard and basketball courts, volleyball, baseball, pavilions, playground areas

Sunrise Lake State Forest Campground
Six miles east of LeRoy via Sunrise Lake Road and 15 Mile Road
<https://www2.dnr.state.mi.us/parksandtrails/#list>
17 rustic sites for tent and small trailers
boat launch, fishing, hunting, hiking, mountain biking
no reservations; sites available first-come, first-serve basis

Tustin Community Library
310 S. Neilson St, Tustin, MI 49688
community room, computers

Tustin Elementary School
107 Bremer St, Tustin, MI 49688
multi-purpose room, playground

Veterans' Memorial Park
226 S. Mill St, Marion, MI 49665
30 acres; 38 full and partial-hook up sites
playground, horseshoes, fishing

Village Memorial Park
LeRoy, MI 49655
picnic area, open space

Water Tower Ballfield

Reed City, MI 49677

<https://reedcity.org/parks-music-art.php>

little league ballfield with amenities

Westerburg Park

Roth St, Reed City, MI 49677

<https://reedcity.org/parks-music-art.php>

46 acres, serves city and surrounding township

basketball courts, baseball diamonds, playground, picnic pavilions, fishing access

White Pine Trail State Park

<https://www2.dnr.state.mi.us/parksandtrails/Default.aspx#list>

92 mile, mostly hard surface trail

runs from Grand Rapids to Cadillac

24 miles go through Osceola County

PRIVATELY OWNED RECREATION ASSETS INVENTORY

Birch Valley Golf Club

6032 30th Ave, Sears, MI 49679

18 holes

Cadillac Woods Campground

23163 M-115, Tustin, MI 49688

www.cadillacwoodscampground.com

full-service and rustic sites

playground, swimming, mini-golf, hiking

Old Log Resort and Campground

12062 M-115, Marion, MI 49665

www.oldlogresort.com

trailer and tent sites, 2-6 person rustic cabins

canoeing, kayaking, and tubing on Muskegon River

River Country Campground

6281 River Road, Evart, MI 49631

www.campancanoe.com

134 sites all full or partial-hook up

canoeing, kayaking, and tubing on Muskegon River

Spring Valley Golf Course

18396 US-10, Hersey, MI 49639

www.springvalleygolf.us

18 holes

Tustin Trails Golf Course
20231 Mackinaw Trail, Tustin, MI 49688
www.tustintrails.com
9 holes

DRAFT

Chapter 4: PLANNING AND PUBLIC INPUT PROCESS

PLANNING PROCESS

The 2021-2025 Osceola County Recreation Plan is the County's fifth Recreation Plan. It is an update to the 2017-2021 Recreation Plan. Appendix C, Suggested Facility Development Standards, from the Michigan Department of Natural Resources', *Guidelines for the Development of Community Park and Recreation Plans* was reviewed; however, recreation needs are based primarily on county demographics, public input, and maintaining the existing infrastructure that is already in place.

The following documents were related to the planning process and copies are included in the appendices:

- Recreation Survey and Results (Appendix F)
- Public Hearing Documentation (Appendix G)
- Minutes of Public Hearing (Appendix G)
- Resolution adopting Recreation Plan (Appendix G)

Upon completion of the Recreation Plan a copy was sent to both the Osceola County Planning Commission and the West Michigan Regional Planning Commission. Copies of the transmittal letters are on file in the Parks administrative office.

PUBLIC INPUT

Public input was considered an important part of the Recreation Plan development process. Although unable to conduct face-to-face meetings due to the Coronavirus pandemic other methods were used to seek public input. These included inviting input from other governmental entities, an online survey, posting the DRAFT Plan online for comments, and holding a public hearing. Each of these activities took place prior to the Osceola County Board of Commissioners (Board of Commissioners) passing a resolution adopting the Plan. A summary of each is listed below.

Invitation to Other Local Units of Government: Although the Recreation Plan focused strictly on the Osceola County Parks system a letter was sent to all townships, villages, and cities in Osceola County notifying them that the Parks Commission was updating its Recreation Plan and invited input. The letter is included as Appendix A, *Correspondence to Local Units of Government, County Planning Commission, and West Michigan Regional Planning Commission.*

Online Survey: A survey seeking input was posted on Survey Monkey from February 7, 2021 to March 18, 2021. The results of the survey are included in Appendix F, *Recreation Survey and Results.*

Review and Comment Period (online comments): A draft copy of the Recreation Plan was posted on the Osceola County website (www.osceola-county.org) from **date** through the public hearing on **date**. There was a postal address and a link to an email address where comments could be sent or questions asked. The website also publicized the public hearing date. Copies of pages from the website are included in Appendix H, *Public Hearing Documentation*.

Public Hearing: The Board of Commissioners held a public hearing on **date**. **Either summarize public comments or enter “No comments were received”**. Documents related to the public hearing are included in Appendix H, *Public Hearing Documentation*.

DRAFT

Chapter 5: GOALS AND OBJECTIVES

The goals and objectives in the Plan are based the Planning and Public Input Process (Chapter 4), demographics within the County (Appendix A), and input Park staff have received while operating the two parks. The “goals” are meant to be very broad and long-term in range. The “objectives” support the goals. The objectives are more focused, but are still meant to be flexible as circumstances may change, opportunities may arise, and funding levels will likely fluctuate during the five year life of this Plan. These Goals and Objectives are not listed in any particular order.

GOAL ONE: Provide camping opportunities that meet the needs of both Osceola County residents and visitors to the County.

Objective: Upgrade full-hook up campsites at Rose Lake Park.

Objective: Increase rustic camping opportunities at both Rose Lake Park and Crittenden Park.

Objective: Increase opportunities for individuals with disabilities.

Objective: Repair and maintain existing infrastructure at both Rose Lake Park and Crittenden Park.

Objective: Provide WiFi access at both parks.

Objective: Continue “themed” activities.

GOAL TWO: Provide, low-cost, outdoor recreational opportunities that meet the needs of both campers and day users.

Objective: Increase opportunities for individuals with disabilities.

Objective: Maintain and repair or replace existing infrastructure at both Rose Lake Park and Crittenden Park.

Objective: Seek opportunities to build community relations and bring youth into the park.

GOAL THREE: Maintain a fee structure that allows for the parks to be properly maintained and improved, but also recognizes the need to provide opportunities for residents of all income levels.

Objective: When possible seek Federal and State grants for larger projects.

Objective: Seek local grants and donations for smaller projects.

Objective: Improve park operations through the use of technology.

Chapter 6: ACTION PROGRAM

The Action Program lists specific projects that were considered the best means available of accomplishing the Goals and Objectives (Chapter 5) at the time the Plan was written. As time passes additional opportunities may present themselves or a better way of accomplishing an objective may become available.

Project	Estimated Cost	Estimated Year
Replace the existing restroom/shower unit in Crittenden Park.	\$250,000	2021
Determine responsibility for the drain in the north section of Crittenden Park. Repair if Parks Commission responsibility.	TBD	2021
Set up WiFi access at both Rose Lake Park and Crittenden Park.	TBD	2021
Improve the phone system at both Rose Lake Park and Crittenden Park.	TBD	2021
Continue programs such as Rural Education Days, Christmas in July, 4 th July Parade, Trick or Treating, etc.	\$250	2021 – 2025
Upgrade the entrance sign at Rose Lake Park.	\$6,000	2022
Replace the playground structure at Rose Lake Park.	\$25,000	2022
Build a rustic cabin at Rose Lake Park.	\$10,000	2022

Perform along with the Disability Advocates of Kent County, a joint ADA site assessment of both Rose Lake and Crittenden Park.	\$250	2022
Connect computers from parks to main office.	TBD	2022
Chip and seal black top from main restroom to boat launch loop.	\$50,000	2023
Update electrical and water redistribution in Sections I, J, and L and Rose Lake Park.	\$150,000	2023
Repair and upgrade existing engineered septic system in Crittenden Park.	\$50,000	2023
Redo the #1 well pressure tank and pump at Crittenden Park.	\$6,000	2023
Install water and sink in Crittenden Park office.	\$5,000	2023
Implement online reservations for both parks.	TBD	2023
Build a rustic cabin at Crittenden Park.	\$10,000	2024
Build 20 full-hook-up sites at Rose Lake Park.	\$150,000	2025
Replace fencing around drainfield and create dog walk area at Crittenden Park.	\$7,000	2025
Build two ADA campsites (lots 7&9 or 8&9) and walkway to restroom at Crittenden Park.	TBD	TBD after joint park assessment (see 2022)

This Page Purposely Left Blank

DRAFT

Appendix A

Osceola County Community Profile



Osceola County, Michigan

Location



Osceola County is located in the west central portion of Michigan's lower peninsula. The land is predominately agricultural and open space. Although located in a rural setting Osceola County is within approximately an hour of several of Michigan's larger communities, such as Grand Rapids, Traverse City, and Mt. Pleasant.

People



Osceola County has a population of 23,290¹. Its residents are able to enjoy many outdoor opportunities which include the White Pines and Pere Marquette Rails-to-Trails. In the photo on the left bicyclists stop at the Reed City Depot which is located at the intersection of the two trails. It is the only location in the State of Michigan where two rails-to-trails intersect.

Demographic information for both Osceola County and the State of Michigan is from the 2015-2019 American Community Survey (ACS).

¹ 2015-2019 American Community Survey

	Osceola County	Michigan
Population		
Total population	23,290	9,965,265
Male	11,804 (50.7%)	4,905,240 (49.2%)
Female	11,486 (49.3%)	5,060,025 (50.8%)
Age		
Persons under 5 years	1,293 (5.6%)	571,094 (5.7%)
5 to 9 years	1,391 (6.0%)	591,065 (5.9%)
10 to 14 years	1,546 (6.6%)	623,834 (6.3%)
15 to 19 years	1,570 (6.7%)	601,449 (6.6%)
20 to 24 years	1,177 (5.1%)	704,793 (7.1%)
25 to 34 years	2,495 (10.7%)	1,267,775 (12.9%)
35 to 44 years	2,493 (10.7%)	1,165,370 (11.7%)
45 to 54 years	2,964 (12.7%)	1,317,258 (13.2%)
55 to 59 years	1,831 (7.9%)	718,008 (7.2%)
60 to 64 years	1,727 (7.4%)	678,726 (6.8%)
65 to 74 years	2,787 (12.0%)	997,417 (9.8%)
75 to 84 years	1,496 (6.4%)	483,853 (4.9%)
85 years and over	520 (2.2%)	207,073 (2.1%)
Median age	43.8	39.7
Housing		
Total housing units	13,784	4,596,198
Median value of owner occupied unit	\$98,500	\$154,900
Occupied housing units	9,186	3,935,041
Vacant housing units	4,603	661,157
Homeowner vacancy rate	1.1%	1.5%
Rental vacancy rate	4.1%	5.1%

	Osceola County	Michigan
Educational Attainment, Age 25 Years and Over		
Population 25 years and over	16,313	6,813,480
Less than 9 th grade	613 (3.8%)	431,435 (6.3%)
9 th to 12 th grade, no diploma	1,232 (7.6%)	194,755 (2.9%)
High school graduate (or equivalency)	7,139 (43.8%)	1,967,316 (28.9%)
Some college, no degree	3,492 (21.4%)	1,591,358 (23.4%)
Associate's degree	1,524 (9.3%)	643,446 (9.4%)
Bachelor's degree	1,516 (9.3%)	1,207,829 (17.7%)
Graduate or professional degree	797 (4.9%)	777,391 (11.4%)
Percent high school graduate or higher	88.7%	90.8%
Percent bachelor's degree or higher	14.2%	29.1%
Income		
Per capita income	\$22,692	\$31,713
Median nonfamily income	\$25,337	\$33,711
Median family income	\$52,628	\$72,600
Mean nonfamily income	\$33,621	\$47,776
Mean family income	\$64,570	\$93,955
Median earnings for male full-time, year-round workers	\$42,193	\$53,734
Median earnings for female full-time, year-round workers	\$33,152	\$41,546
Percentage of <i>people/families</i> whose income in the last 12 months is below the poverty level	17.9% / 12.9%	14.4% / 9.9%

Communities



Osceola County has 22 local units of government. Listed below is each local unit of government and its population from the 2015-2019 American Community Survey.

Cities (2) & Villages (4)

City of Evert – 1,793
City of Reed City – 2,472
Village of Hersey – 315
Village of LeRoy – 305
Village of Marion – 896
Village of Tustin – 215

Townships (16)

Burdell – 1,186	Cedar – 409
Evert – 1,561	Hartwick – 546
Hersey – 1,698	Highland – 1,161
LeRoy – 1,551	Lincoln – 1,478
Marion – 1,678	Middle Branch – 769
Orient – 840	Osceola – 1,132
Richmond – 1,712	Rose Lake – 1,405
Sherman – 1,033	Sylvan – 866

Transportation

Osceola County has an excellent east-west and north south road network, as well as both regional and local bus service, an airport, and rail service through the Village of Marion.

Road Network – US-131 North/South, US-10 East/West, M-66 North/South, and M-115 East/West

Bus Service – Indian Trails (regional) and Mecosta Osceola Transportation Authority (local)



Airport – The City of Evert Municipal Airport is located within the Evert Air Industrial Park. The airport provides service to industry and owners of private planes.

Rail Service – Rail service is available in the Village of Marion. A spur can be run into their industrial park.

Colleges & Universities

There are five community colleges and universities located within 50 miles of one or both of Osceola County's two cities.

Ferris State University (2020 Big Rapids campus enrollment – 7,901, all campuses – 11,165; Source: FSU website)

Miles from Reed City – 14

Miles from Ewart – 26

Central Michigan University (2020 on campus enrollment – 13,609; Source: CMU website)

Miles from Reed City - 60

Miles from Ewart – 47

West Shore Community College (2017 enrollment – 1,380)

Miles from Reed City - 50

Baker College, Cadillac Campus

Miles from Reed City – 31

Miles from Ewart – 38

Mid Michigan Community College (FY 2018-2019 enrollment - 4,964; Source: Mid Michigan Community College website)

Miles from Reed City - 47

Miles from Ewart – 33

Health Care

Unlike many rural communities, Osceola County residents and surrounding communities are fortunate to have access to *local*, advanced health care. The Spectrum Health Reed City Hospital provides clinics, inpatient care, rehab and nursing, and 24-hour emergency services. In addition to these services, the Reed City Hospital is connected to the entire Spectrum Health system. Spectrum Health also has clinics in Ewart and Tustin.

The Susan P. Wheatlake Regional Cancer Center is also located in Reed City. This regional cancer center is located just up the street from the Reed City Hospital.

Utilities

Electricity – Consumers, Great Lakes Energy

Natural Gas – DTE Energy

Water/Sewer – Municipal services in Ewart, Marion, and Reed City. Well and septic in all other areas.

Cable TV – Charter, Summit Digital

Broadband – Mobile broadband is available throughout the county. Fixed broadband is available in some areas. *Both the City of Reed City and Village of Hersey are Gigabit Communities.* In February 2021 Point Broadband began installing fiber in Osceola County.

Media

7&4 WPBN – NBC affiliate broadcasting from Traverse City.

9&10 News (WWTV) – CBS affiliate broadcasting from Cadillac.

Cadillac News – Daily newspaper covering Cadillac and surrounding communities which includes Osceola County.

FOX 32 – FOX affiliate broadcasting from Cadillac.

Marion Press – Weekly newspaper with a coverage area that includes the Village of Marion and the City of Ewart.

Pioneer – Daily newspaper covering Big Rapids and surrounding communities which includes Osceola County. An Osceola County specific edition is published once a week.

Weekly Voice – A free weekly newspaper serving Ewart, Reed City, Hersey, Sears, and Chase (Lake County).

WGTU – ABC affiliate broadcasting from Traverse City.

2018 County Business Patterns

(U.S. Census Bureau, 2018 County Business Patterns, Table CB1800CBP)

2012 NAICS Code ^(a)	Meaning of 2012 NAICS Code	Year	Number of Paid Employees for			
			Number of Establishments	Pay Period that Included March 12th	1st Quarter Payroll (\$1,000)	Annual Payroll (\$1,000)
00	Total for all sectors	2018	432	6,286	64,954	279,707
11	Agriculture, forestry, fishing, and hunting	2018	7	38	368	1,512
21	Mining, quarrying, and oil and gas extraction	2018	5	11	180	948
22	Utilities	2018	4	47	1,219	5,082
23	Construction	2018	49	528	10,473	48,728
31-33	Manufacturing	2018	44	2,402	27,358	117,439
42	Wholesale trade	2018	11	107	1,149	5,103
44-45	Retail trade	2018	64	492	2,819	11,345
48-49	Transportation and warehousing	2018	13	148	1,933	8,302
52	Finance and insurance	2018	21	116	1,216	5,267
53	Real estate and rental and leasing	2018	17	17	102	511
54	Professional, scientific, and technical services	2018	24	81	826	3,833
56	Administrative and support and waste management and remediation services	2018	16	74	492	1,332
62	Health care and social assistance	2018	49	1,159	9,786	41,161
71	Arts, entertainment, and recreation	2018	4	3	17	224
72	Accommodation and food services	2018	40	564	1,783	9,685
81	Other services (except public administration)	2018	63	309	1,845	7,771

(a) NAICS: North American Industrial Classification Standard

Osceola County's Largest Employers (as of 08/2020)

Ventra – 1,070; Manufacturing (Tier II automotive)

Spectrum Health – 460; Health Care

General Mills – 380; Manufacturing (food processing)

Osceola County – 170 (105 full-time); Government

Reed City Public Schools – 130; Education

Evert Public Schools – 110; Education

Pine River Public Schools – 110; Education

Kraftube – 105; Manufacturing (metal tubular parts)

LeRoy Tool & Die – 100; Manufacturing (plastic and rubber molds, rubber parts)

Cargill – 90; Mining (salt)

Reed City Tool – 90; Manufacturing (plastic injection molds)



Ventra Evart LLC
Osceola County's Largest Employer

Industrial Parks

Evert Air Industrial Park – Michigan Certified Business Park, 47 acres, 4,200' lighted foot runway

Marion Industrial Park – 13 acres, rail spur can be brought into industrial park

Geography (Source: 2010 U.S. Census)

	Osceola County	Michigan
Total Area in square miles	573.10	96,713.51
Total Land Area in square miles	566.39 (98.8%)	56,538.90 (58.5%)
Total Water Area in square miles	6.71 (1.17%)	40,174.61 (41.5%)
Population Density per square mile of land	41.5	174.8
Housing Density per square mile of land	24.1	80.2

Economic Development Partners

In addition to the Osceola County Community Development Office there are other organizations available to assist businesses in Osceola County.

Ewart Downtown Development Authority (DDA),
(231) 734-0185

Marion Chamber of Commerce, (231) 743-2461

Reed City Area Chamber of Commerce, (231) 832-5431

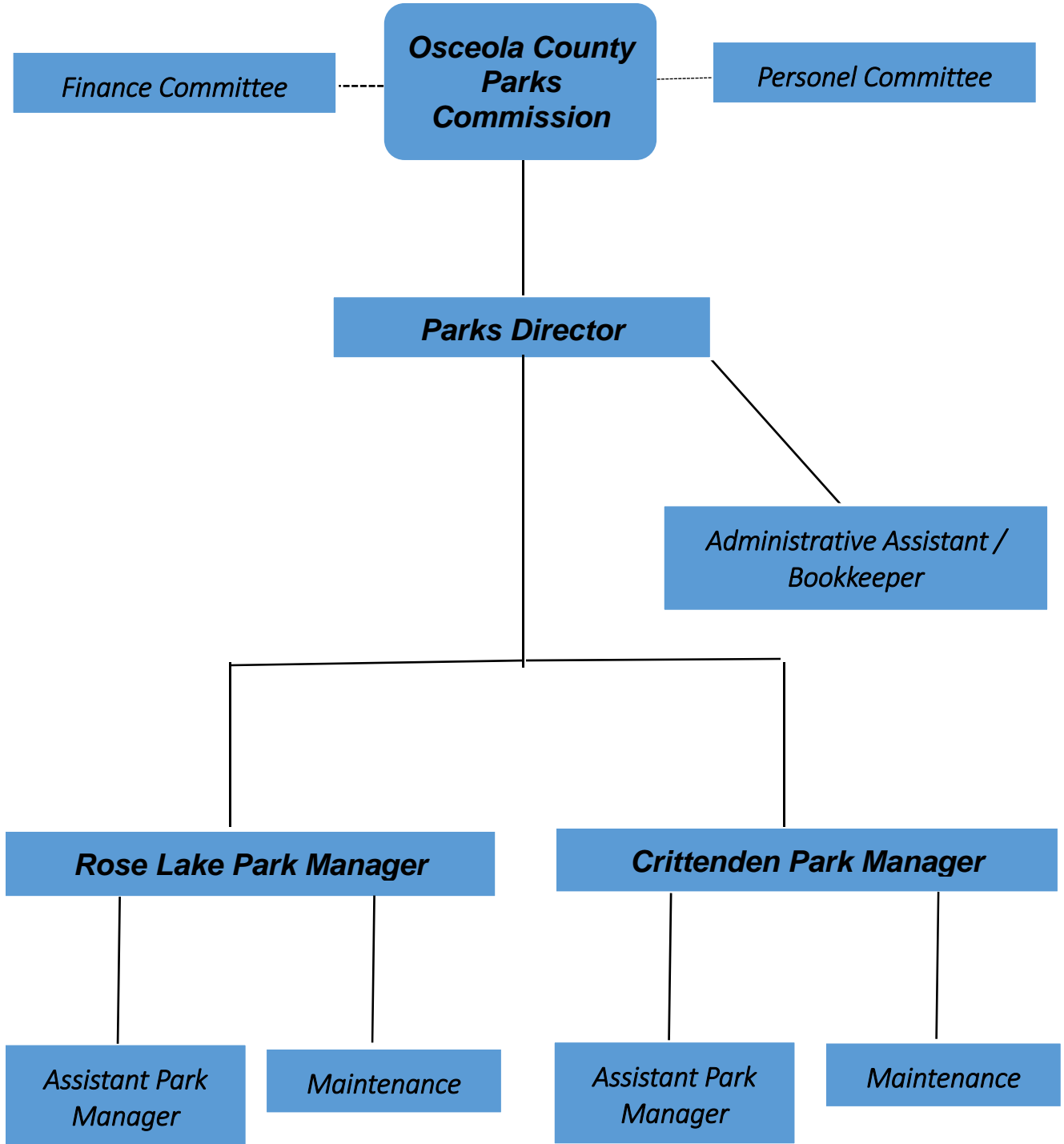


Reed City Depot
Reed City Chamber of Commerce

Appendix B

Osceola County Parks Organizational Chart

Osceola County Parks Organizational Chart



Appendix C

2021 Budget

REVENUES**2021 Budget****2020 Budget****2019 Budget**

Acct. #	Description			
400.002	Camp Fee - Rose Lake	\$110,000	\$101,000	\$100,000
400.003	Camp Fee - Crittenden	\$73,000	\$65,000	\$65,000
400.004	Annual Permits - Crittenden	\$12,000	\$12,000	\$12,000
400.005	Annual Permits - Rose Lake	\$28,000	\$28,000	\$28,000
400.006	Seasonal Camp - Rose Lake	\$55,000	\$50,000	\$50,000
400.007	Seasonal Camp - Crittenden	\$20,000	\$25,000	\$25,000
400.008	Mini Golf - Rose Lake	\$4,000	\$4,000	\$4,000
400.009	Dump Station - Rose Lake	\$4,000	\$3,500	\$3,500
400.010	Store Rent & Utilities - RL	\$600	\$600	\$600
400.011	Boat Rental - Rose Lake	\$500	\$500	\$500
400.012	Boat Rental - Crittenden	\$500	\$400	\$400
400.013	Interest	\$500	\$50	\$50
400.016	Dump Station - Crittenden	\$1,500	\$1,300	\$1,300
400.017	Miscellaneous - Crittenden	\$171	\$200	\$200
400.018	Miscellaneous - Rose Lake	\$300	\$300	\$300
400.019	Daily Permits - Rose Lake	\$12,000	\$10,000	\$10,000
400.020	Daily Permits - Crittenden	\$4,000	\$4,000	\$4,000
400.021	Pavilion Reservation	\$3,000	\$2,500	\$2,500
400.022	Cleaning Deposit	\$0	\$0	\$0
400.024	Storage - Rose Lake	\$1,000	\$900	\$900
400.025	Storage - Crittenden	\$400	\$400	\$400
400.026	3 Day Passes - Rose Lake	\$2,000	\$4,000	\$4,000
400.027	3 Day Passes - Crittenden	\$1,500	\$1,450	\$1,450
539.006	State Grants	\$0	\$0	\$0
580.000	Contribution/Foundations	\$0	\$0	\$0
627.001	Donations	\$0	\$0	\$0
643.000	Sale Tangible - Fixed Assets	\$0	\$0	\$0
689.001	Electric Refund - Rose Lake	\$4,000	\$4,000	\$4,000
689.002	Electric Refund - Crittenden	\$1,500	\$1,500	\$1,500
695.000	Transfers In	\$0	\$0	\$0
699.001	Appropriated Fund Balance	\$0	\$0	\$0
TOTAL		\$339,471	\$320,600	\$319,600

EXPENDITURES

Acct. #	Description	2021 Budget	2020 Budget	2019 Budget
702.001	Director	\$21,660	\$21,446	\$21,235
702.003	Office Employees	\$14,400	\$14,400	\$15,655
702.004	Park Employees	\$102,211	\$90,000	\$86,000
713.000	Per Diem	\$3,000	\$3,000	\$3,000
719.000	FICA	\$10,000	\$8,000	\$8,000
720.000	Retirement Co Share	\$300	\$200	\$200
721.000	Health Insuramce	\$5,000	\$5,000	\$5,000
722.000	Workers Comp	\$5,000	\$5,000	\$5,000
723.000	Unemployment	\$8,000	\$5,000	\$5,000
726.000	Postage	\$1,400	\$1,200	\$1,200
727.000	Office Supplies	\$4,000	\$1,700	\$1,700
728.000	Printing	\$1,500	\$1,500	\$1,500
744.000	Dues	\$2,000	\$2,000	\$2,000
745.000	Bank Charges	\$1,500	\$1,500	\$500
746.000	Uniforms	\$2,000	\$2,000	\$2,000
747.000	Gas & Oil	\$2,000	\$2,000	\$2,000
808.027	Permit Fees	\$4,000	\$4,500	\$4,500
850.000	Telephone	\$3,000	\$5,000	\$5,000
860.000	Travel	\$8,000	\$8,000	\$8,000
861.000	Conference	\$1,000	\$1,000	\$1,000
880.000	Newspaper / Adv	\$2,000	\$2,000	\$2,000
880.001	Park Activities	\$3,000	\$2,600	\$2,600
885.000	Personel - Physicals	\$1,000	\$1,000	\$1,000
921.000	Electric	\$36,000	\$34,000	\$34,000
922.000	Depreciation	\$4,000	\$4,000	\$4,000
923.000	Prior Period Adjustment	\$0	\$0	\$0
929.000	Disposal / Propane Service	\$12,000	\$8,000	\$11,000
930.000	Misc. Expenses	\$0	\$100	\$100
931.000	Equipment Maint / Repair	\$8,000	\$13,000	\$12,000
934.000	Building Maint / Repair	\$18,000	\$18,000	\$23,000
934.001	Rose Lake Home Improvements	\$2,000	\$2,000	\$2,000
934.003	Tree / Stump Removal	\$6,000	\$6,000	\$6,000
934.004	Rose Lake Leaf Cleanup	\$6,000	\$6,000	\$4,950
940.000	Equipment Rental	\$500	\$500	\$500
963.000	Pkg Prop Damage & Liability	\$7,500	\$7,000	\$7,000
979.001	Capital Equipment	\$8,500	\$14,000	\$16,000
980.019	Capital Equipment	\$25,000	\$19,954	\$14,960
999.000	Transfers Out	\$0	\$0	\$0
TOTAL		\$339,471	\$320,600	\$319,600

Appendix D

Osceola County Park Maps

Osceola County Parks, Location Map



RL - Rose Lake Park

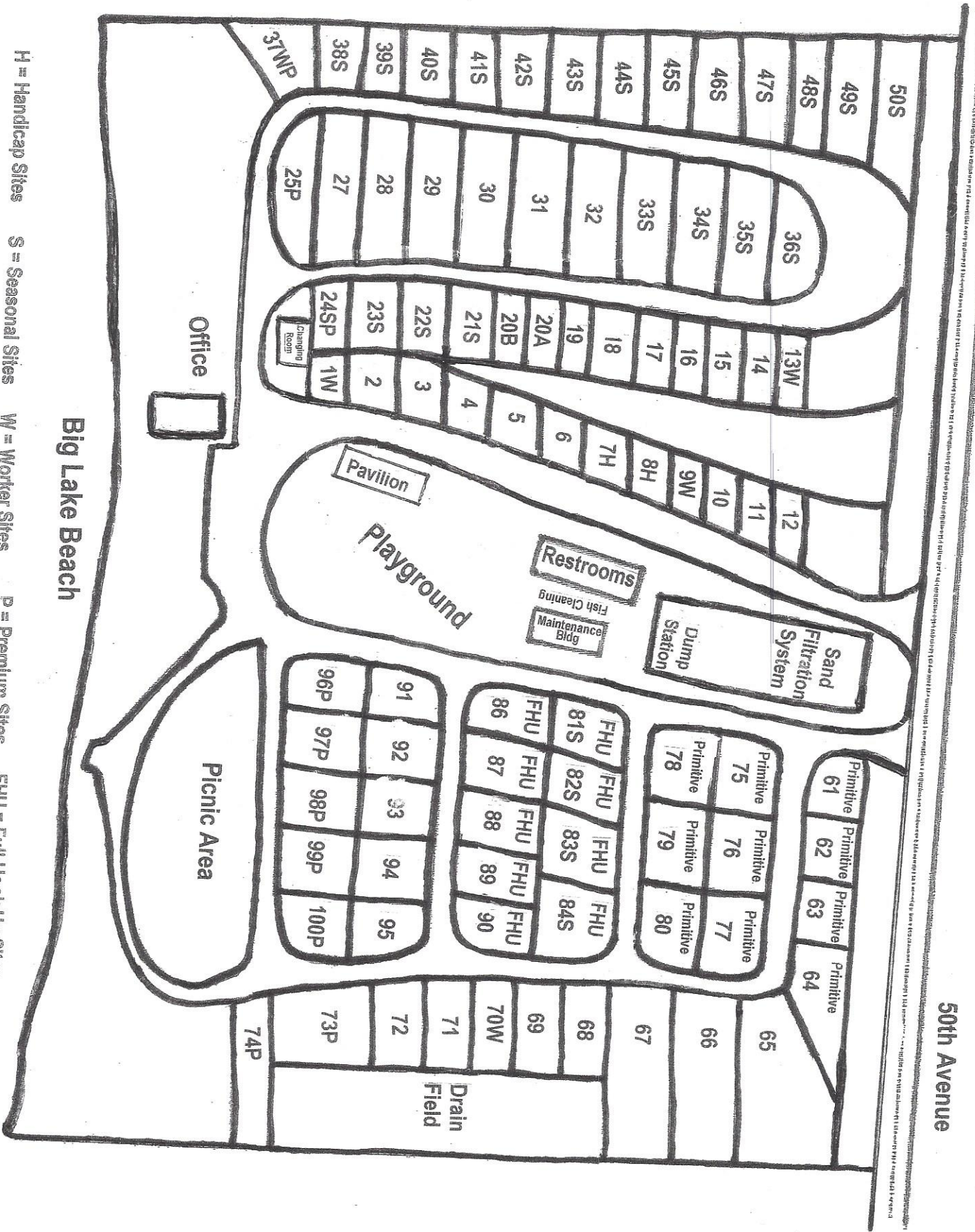
C - Crittenden Park

Map Source: State of Michigan

Crittenden County Park

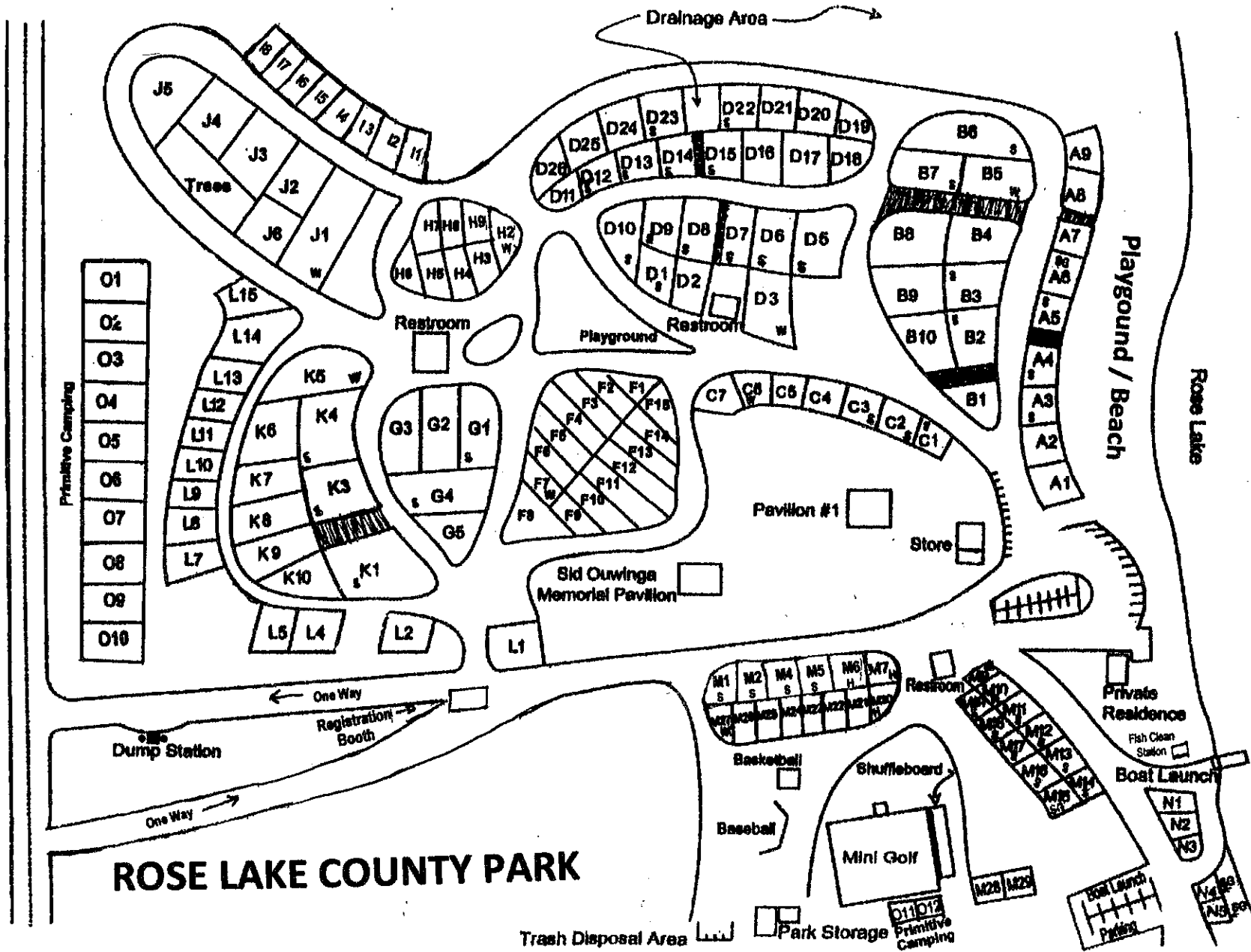
2017 Season Map

50th Avenue



89
Total
Sites

- H = Handicap Sites
- S = Seasonal Sites
- W = Worker Sites
- P = Premium Sites
- FHU = Full Hook Up Sites



H = Handicap Sites

W = Worker Sites

SG = Grandfather Seasonal Sites

S = Seasonal Sites

--- = walkways

Appendix E

Post-Completion Self-Inspection Report



PUBLIC OUTDOOR RECREATION GRANT
Post-Completion Self-Certification Report

This information required under authority of Part 19, PA 451 of 1994, as amended;
the Land and Water Conservation Fund Act of 1965, 78 Stat. 897 (1964); and Part 715, of PA 451 of 1994, as amended.

GRANT TYPE: [X] MICHIGAN NATURAL RESOURCES TRUST FUND [] CLEAN MICHIGAN INITIATIVE
(Please select one) [] LAND AND WATER CONSERVATION FUND [] RECREATION PASSPORT [] BOND FUND

GRANTEE: Osceola County

PROJECT NUMBER: TF12-002

PROJECT TYPE: Development

PROJECT TITLE: Rose Lake Park Restroom / Campsite Improvements

PROJECT SCOPE: Restroom Upgrade; Campsite Upgrade

TO BE COMPLETED BY LOCAL GOVERNMENT AGENCY (GRANTEE)

Table with 3 columns: Name of Agency (Grantee), Contact Person, Title, Address, Telephone, City, State, ZIP, Email. Row 1: Osceola County, Carl Baumgras, Parks Director, 301 W. Upton, 231-832-6130, Reed City, MI 49677, oscparkdir@hotmail.com

SITE DEVELOPMENT

Any change(s) in the facility type, site layout, or recreation activities provided? If yes, please describe change(s). [] Yes [X] No

Has any portion of the project site been converted to a use other than outdoor recreation? If yes, please describe what portion and describe use. (This would include cell towers and any non-recreation buildings.) [] Yes [X] No

Are any of the facilities obsolete? If yes, please explain. [] Yes [X] No

SITE QUALITY

Is there a park entry sign which identifies the property or facility as a public recreation area? If yes, please provide a photograph of the sign. If no, please explain. [X] Yes [] No

Are the facilities and the site being properly maintained? If no, please explain. [X] Yes [] No

Is vandalism a problem at this site? If yes, explain the measures being taken to prevent or minimize vandalism. [] Yes [X] No

POST COMPLETION SELF-CERTIFICATION REPORT - CONT'D

Is maintenance scheduled on a regular basis? If yes, give schedule. If no, please explain.

Yes No

Cleaning - daily; repairs - as needed

GENERAL

Is a Program Recognition plaque permanently displayed at the site? If yes, please provide a photograph. (Not required for Bond Fund Grants)

Yes No N/A

Is any segment of the general public restricted from using the site or facilities? (i.e. resident only, league only, boaters only, etc.) If yes, please explain.

Yes No

Is a fee charged for use of the site or facilities? If yes, please provide fee structure.

Yes No

What are the hours and seasons for availability of the site?

2017 Camping Season: May 12 - October 1; 9:00 AM until dark for non-campers.

COMMENTS (ATTACH SEPARATE SHEET IF MORE SPACE IS NEEDED)

POST COMPLETION SELF-CERTIFICATION REPORT - CONT'D

CERTIFICATION

I do hereby certify that I am duly elected, appointed and/or authorized by the Grantee named above and that the information and answers provided herein are true and accurate to the best of my personal knowledge, information and belief.

LARRY EMIG
Please print

Larry Emig
Grantee Authorized Signature

4/18/17
Date

Jody Waurzyniak
Please print

Jody Waurzyniak
Witness Signature

4-18-17
Date

**Send completed report to: POST COMPLETION GRANT INSPECTION REPORTS
GRANTS MANAGEMENT
MICHIGAN DEPARTMENT OF NATURAL RESOURCES
PO BOX 30425
LANSING MI 48909-7925**

Appendix F, Post Completion Self-Inspection Report, Recognition Plaque



Appendix F

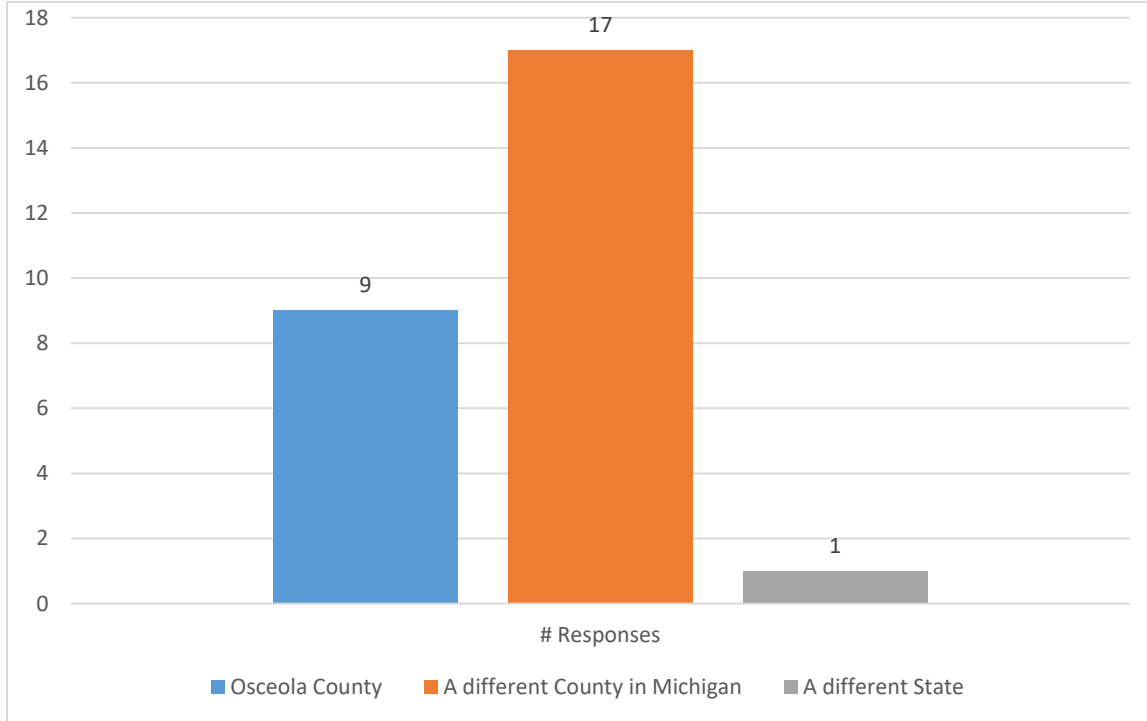
Recreation Survey and Results

Appendix G

Recreation Survey and Results

Osceola County Park Survey Results (2/7/21 – 3/18/21)

1. Where do you live?



Osceola County – #9

Percent – 33.33%

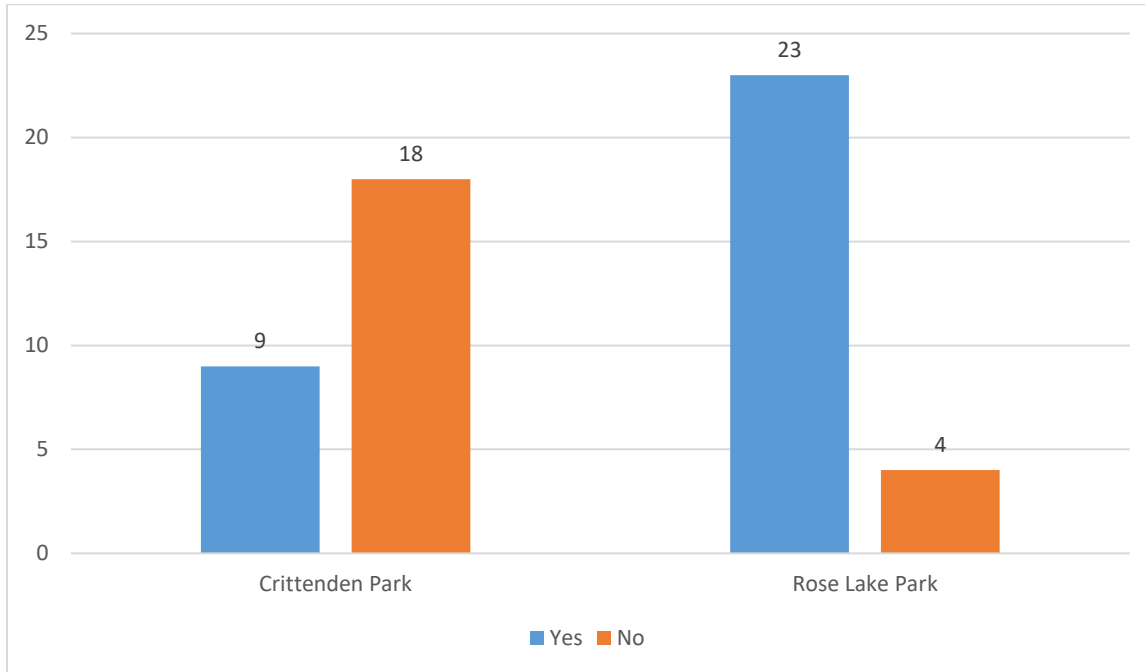
A different County in Michigan – #17

Percent – 62.96%

A different State – #1

Percent – 3.70%

2. Do you have family or friends who live outside Osceola County that use either park?



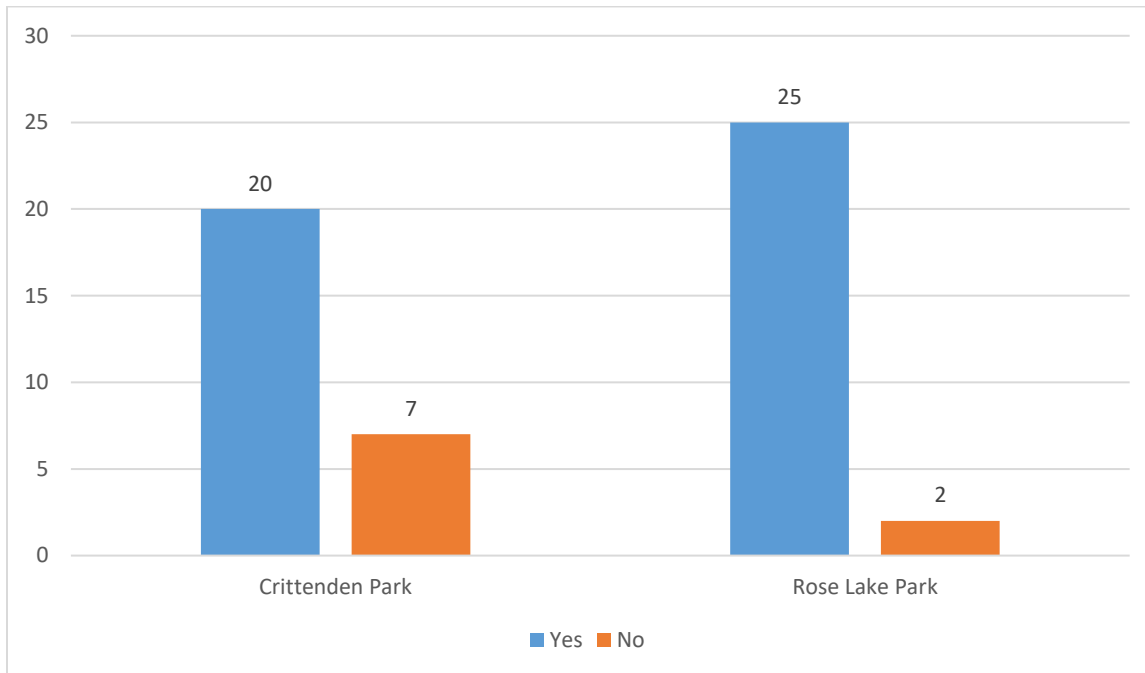
Crittenden Park, Yes – #9 Percent – 33.33%

Crittenden Park, No – #18 Percent – 66.67%

Rose Lake Park, Yes – #23 Percent – 85.19%

Rose Lake Park, No - #4 Percent – 14.81%

3. Do you know where each of these parks are located?



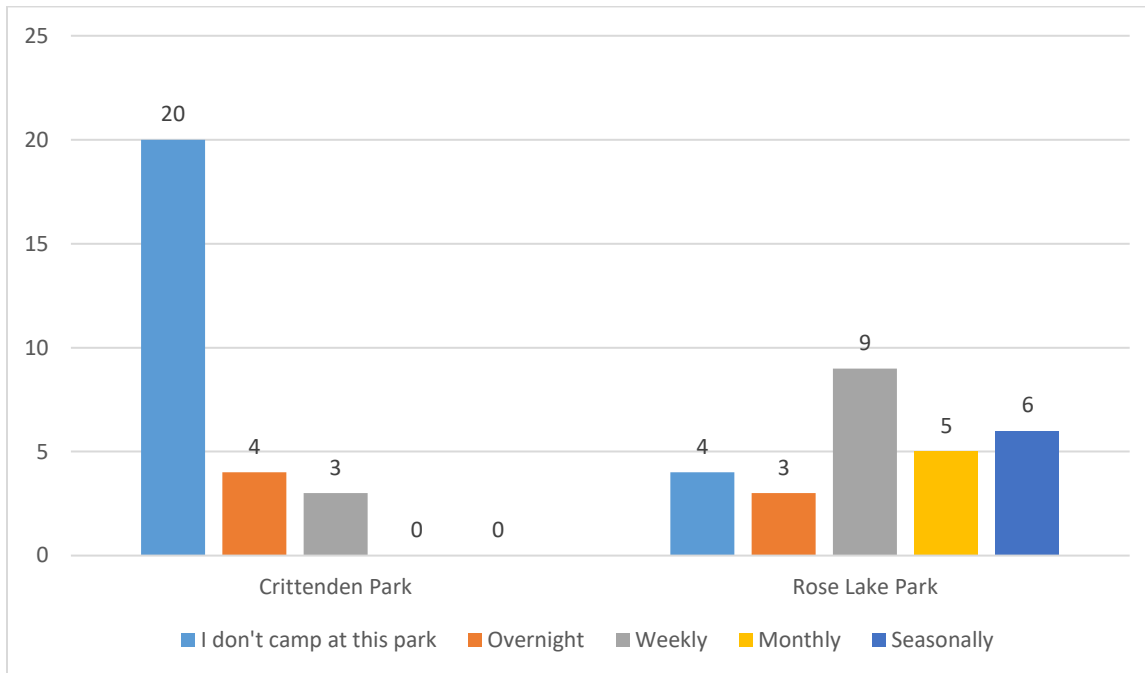
Crittenden Park, Yes – #20 Percent – 74.07%

Crittenden Park, No – #7 Percent – 25.93%

Rose Lake Park, Yes – #25 Percent – 92.59%

Rose Lake Park, No - #2 Percent – 7.41%

4. What BEST describes your typical camping stay?



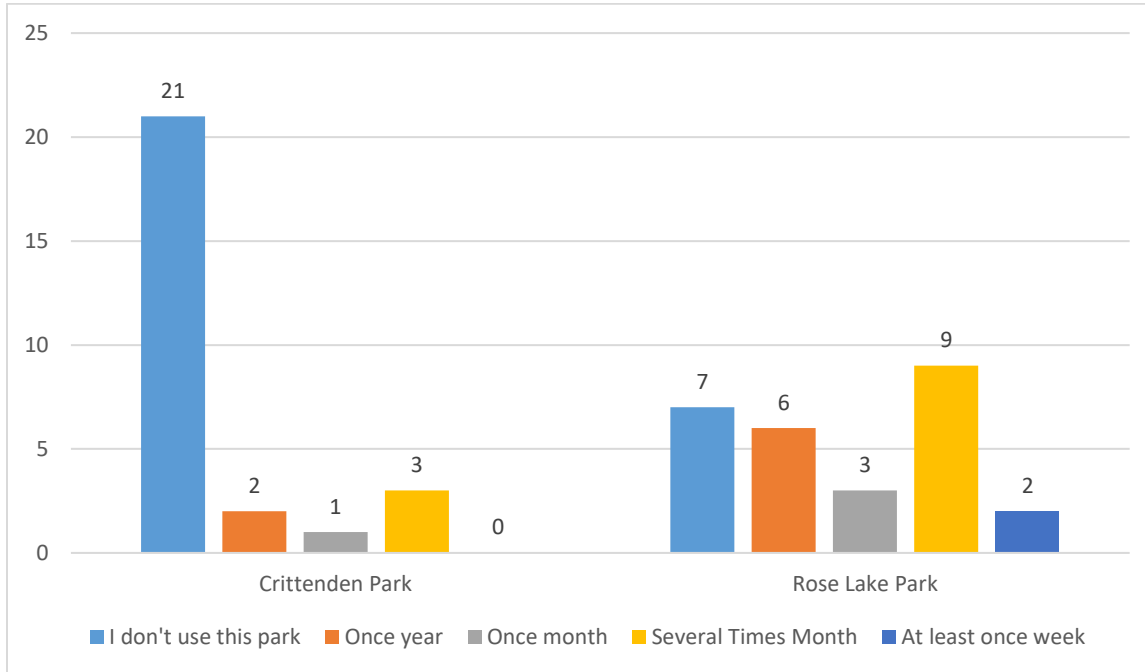
Crittenden Park

I don't camp at this park – #20	Percent – 74.07%
Overnight – #4	Percent – 14.81%
Weekly – #3	Percent – 11.11%
Monthly – #0	Percent – 0.00%
Seasonal – #0	Percent – 0.00%

Rose Lake Park

I don't camp at this park – #4	Percent – 14.81%
Overnight – #3	Percent – 11.11%
Weekly – #9	Percent – 33.33%
Monthly – #5	Percent – 18.52%
Seasonal – #6	Percent – 22.22%

5. EXCLUDING camping how often do you use each park?



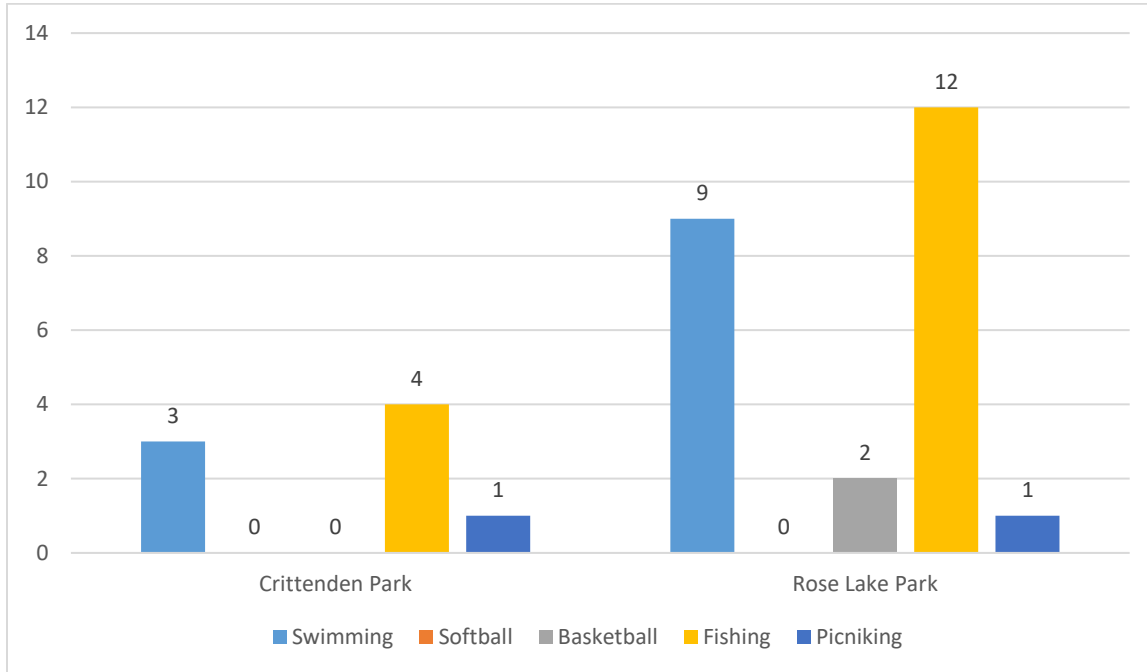
Crittenden Park

I don't use this park – #21	Percent – 77.78%
Once year – #2	Percent – 7.41%
Once month – #1	Percent – 3.70%
Several times month – #3	Percent – 11.11%
At least once week – #0	Percent – 0.00%

Rose Lake Park

I don't use this park – #7	Percent – 25.93%
Once year – #6	Percent – 22.22%
Once month – #3	Percent – 11.11%
Several times month – #9	Percent – 33.33%
At least once week – #2	Percent – 7.41%

6. What activities do you or your family members participate in at each park?



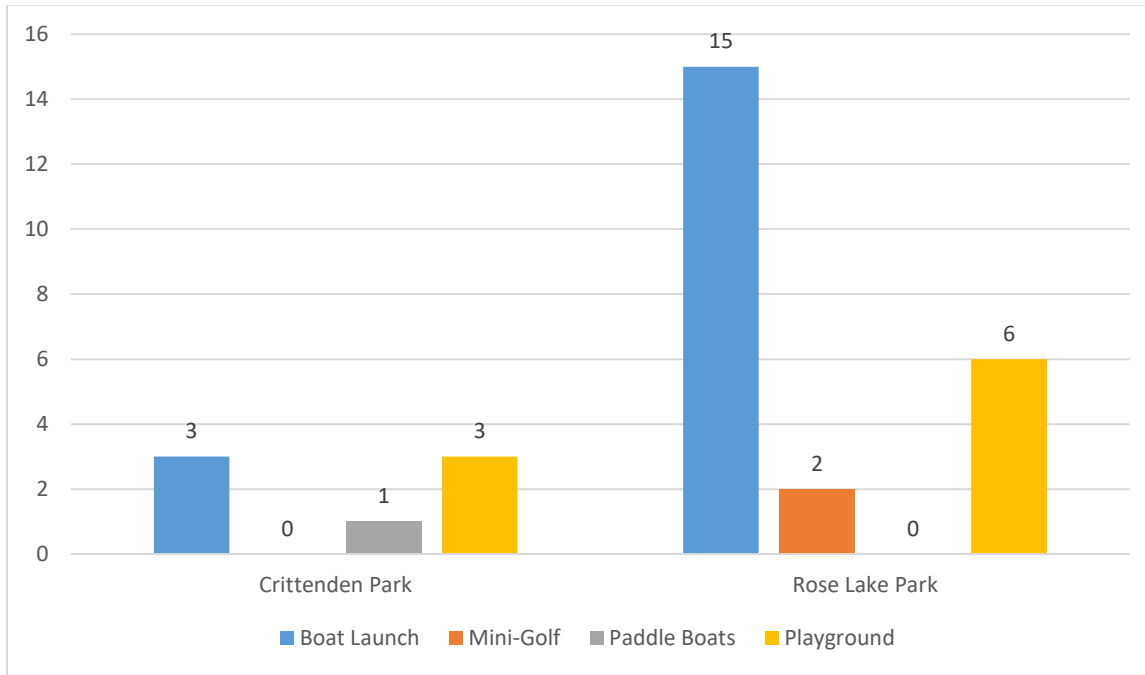
Crittenden Park

Swimming – #3	Percent – 37.50%
Softball – #0	Percent – 0.00%
Basketball – #0	Percent – 0.00%
Fishing – #4	Percent – 50.00%
Picnicking – #1	Percent – 12.50%

Rose Lake Park

Swimming – #9	Percent – 37.50%
Once year – #0	Percent – 0.00%
Basketball – #2	Percent – 8.33%
Fishing – #12	Percent – 50.00%
Picnicking – #1	Percent – 4.17%

7. What amenities do you or your family members use at each park?



Crittenden Park

Boat Launch – #3	Percent – 42.86%
Mini-Golf – #0	Percent – 0.00%
Paddle Boats – #1	Percent – 14.29%
Playground – #3	Percent – 42.86%

Rose Lake Park

Boat Launch – #15	Percent – 65.22%
Mini-Golf – #2	Percent – 8.70%
Paddle Boats – #0	Percent – 0.00%
Fishing – #6	Percent – 26.09%

8. What improvements do you or your family feel are needed at Crittenden Park?

- N/A – 5
- We don't use this park.
- More space for camp sites. No privacy
- Combine some of the current sites to make larger ones. I would gladly pay more to have a larger area, more space between the sites and fewer people. I've described this location as the Spirit Airlines of campgrounds. Every area feels so squished together and campers are right on top of each other.
- I'm not sure if anything can even be done about this but the sharp shells and rocks in the swimming zone are like walking on glass.
- Unattended children everywhere.
- None I can think of.
- More fishing dock space.
- New restroom
- A better docking area for boats.
- Wish there was a sandy beach.

9. What improvements do you or your family feel are needed at Rose Lake Park?

- Fixing ruts around trees on campsites, removing dead trees.
- Less restrictions on bike riders and golf cart users.
- Keep the Grand Father Clause for campsites. Otherwise I do not think that the park has seen great improvements over the past 30 years.
- WiFi, bike trail, boat docks, more kid friendly things like bigger parks, water slide, jump pad, grandfathered lots.
- WiFi, full-hook-up, laundry room, boat docks, bike trail to keep kids off the road, Grandfathered lots.

- More kid friendly activities such as bounce pads or a permanent water slide. Updated playground equipment. More kid friendly activities.
- The cleaning of the bathrooms haven't been very good in the past couple of years. Also some of the workers campsites tend to look unkempt as they have so much stuff all over, but other workers put a lot of effort into making their sites look very nice.
- More activities for kids, tree roots covered.
- Pavilion
- It would be nice to see fresh sand in the beach, volleyball court and in all park playground. The playground in the campground could use some upgrades and better activities for campers.
- Updated water/easier access to water. When camping in the F lots, there are some lots you can't easily access the water spigots. The fences in those lots do not help to keep people from going into other people's lots. Too many seasonal lots.
- Full hook-ups, electric upgrades (constant problems with outlets).
- Assigned boat spaces for campers. We usually camp for at least 10 days. The boat stays in the water the whole time. However day use and folks coming to the store for ice cream etc. take the spaces while we are out and often have no place to re-dock. Would gladly "rent" a space without site for the time we are there. Versus having someone squeeze in, damage our boat or better yet... last year trapped our boat in and we couldn't use it for the day as someone docked in the lake in front of us. It IS a struggle. Something to think about and a revenue maker. Boat site rentals to the left of the park and launch... day use to the right towards kids camp... Little numbered signs wwith tether poles. :)
- More activity for kids. More family friendly. Roots taken out of some lots. A better marked walkway to the bathrooms. Things to tie boats down to on shore.
- I feel you should be able to rent your lot on a first come first serve basis. I feel you should be able to stay on a lot from year to year without going into a lottery.
- Update campsites in the L section.
- Trees removed, roots removed, more of a level/bigger beach area. Wider roadways (2 vehicles can not go down the roads at the same time).
- Leveler sites

- Upgrades to I-J-L sections water and electric.
- Less tree roots, different park managers.
- NA

10. Please share any additional comments you may have!

- N/A or None – 2
- Making the reservation process more uniform, either on line or by phone, online reservations.
- We have enjoyed all of the progress that Rose Lake employees have made throughout the years. Keep up the Good Work!
- Should be able to choose more than one answer on some questions.
- We love camping at Rose Lake. The staff is all so friendly
- You need to let the seasonal people stay where they are and not put them in a drawing...
- Go back to allowing reservations one year in advance. Been camping in the same spot for 10 years and because of new rules we had to find new spots.
- Been camping at Rose Lake for years. The last few years have been disappointing. The “older” camp employees are ornery and don’t seem to want to be there. They harass kids for riding their bikes or walking around 5 minutes after dark. I can see if the kids are loud and destructive, but the park “Nazis” only seem happy when they are yelling at kids unnecessarily. They are kids for crying out loud. If the employees over 70 yr. old hate kids they shouldn’t work there. Its not just me. I listen to many campers who say they won’t be back again because its not kid friendly and the “old farts” run it like a prison.
- LOVE ROSE LAKE AND STAFF!!! We look forward to our stay every year!!
- I feel the committee should show up and talk to people to see what they say. I also would like Bingo to come back and kids games.
- We live Rose Lake and the size of the camp sites.
- The bathrooms at Crittenden Park are always immaculate and the store is well stocked with a surprising variety given the size. While we were there, we saw the same two team members busting their butts constantly. They had great attitudes and always seemed to

be in a great mood. Barb and Dave are the ENTIRE reason we're returning to this campground, they make it feel like home.

- We love fishing on the lake!
- Beautiful park, very well maintained.
- Idea for the Rose Lake house should be a rental house during the camping season it could bring in more revenue for the park with weekly and weekend rental.

Appendix G

Public Hearing Documentation
(notices, agendas, minutes, resolution)

Osceola County, Michigan
301 W. Upton Ave.
Reed City, MI 49677