

SITE LOCATION MAP (NOT TO SCALE)

LEGEND:

○ IRON PIN (FOUND)	△ SIGN
● Rebar/Drill Hole (To Be Set)	○ POST
□ MONUMENT (FOUND)	☆ LIGHT POLE
⊙ MANHOLE	◇ GUY ANCHOR
⊕ DRAINAGE MANHOLE	◇ UTILITY POLE
⊕ SANITARY MANHOLE	⊕ WATER GATE
⊕ ELEC. MANHOLE	⊕ WATER METER
⊕ TELE. MANHOLE	⊕ GAS VALVE
⊕ "C" CATCH BASIN	⊕ GAS METER
⊕ "C-L" CATCH BASIN	⊕ TRANSFORMER
⊕ DECIDUOUS TREES	⊕ ELEC. METER
⊕ EVERGREEN TREES	⊕ MAIL BOX
⊕ SHRUB/BUSH	⊕ HAND HOLE
⊕ FLAG POLE	⊕ BUTTON BOX
⊕ TRAFFIC CONTROL BOX	⊕ A.C. UNIT
	⊕ TRAFFIC LIGHT POLE

---	BOUNDARY LINE
- - - - -	GUARD RAIL
====	UNDERGROUND PIPING (San., Strm.)
G	U/G GAS LINE
E	U/G ELEC. LINE
W	WATER LINE
///	OVERHEAD UTILITIES
T	U/G TELE. LINE
***	CHAIN LINK FENCE
~~~~~	TREE LINE

**Martin**  
Surveying Associates, LLC  
201 CHRISTIAN LANE BERLIN, CT 06037  
860-832-9328 860-357-4604 (FAX)

REVISIONS:

**IMPROVEMENT LOCATION SURVEY (PROPOSED)  
PREPARED FOR  
PAUL C. BARBIERO  
5 JUDD DRIVE  
NORTH HAVEN, CONNECTICUT, 06473**

MSA PROJECT NO: 21-010	
SCALE: 1" = 20'	DRAWN BY: B.M.
DATE: 2/23/2021	CHECKED BY: D.G.M.
SHEET: <b>1 OF 1</b>	

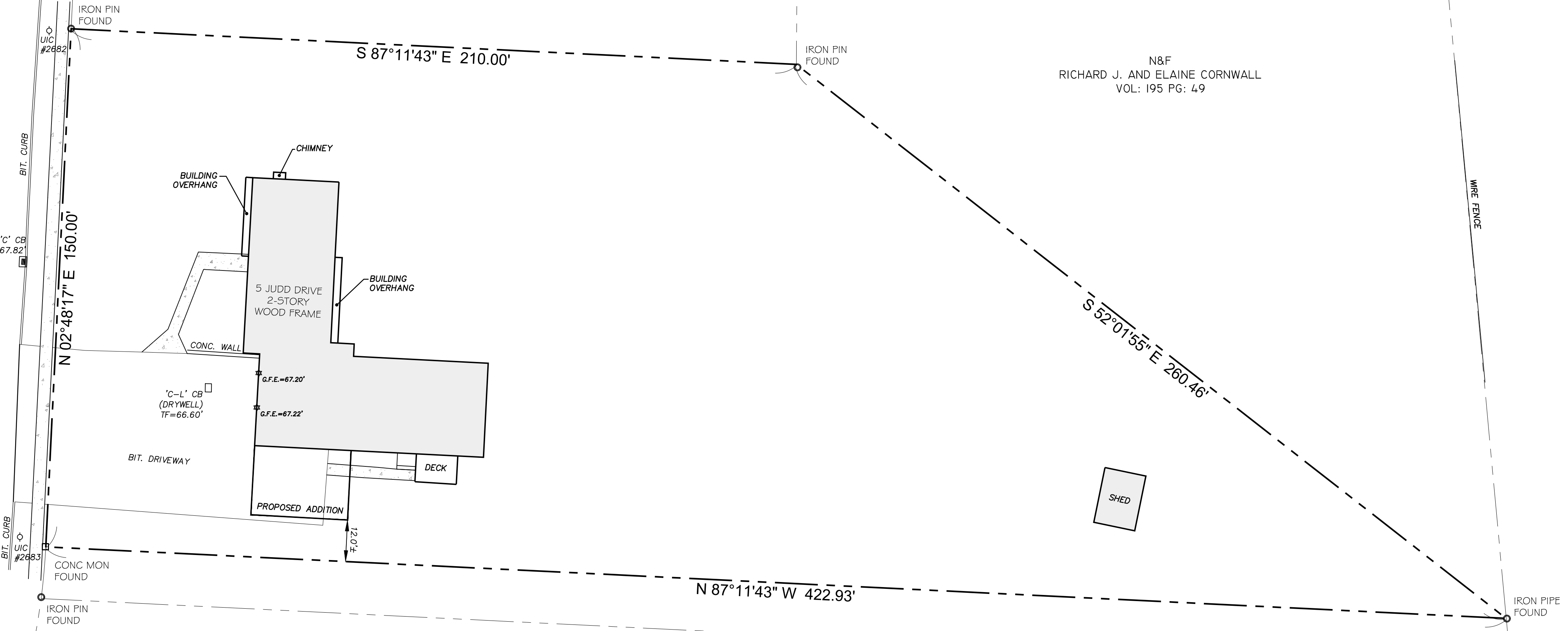


N&F  
PHILOMEENA CHAUDHRY AND  
MATHEW THEKKUMKATTIL  
VOL: 973 PG: 822

N&F  
RICHARD J. AND ELAINE CORNWALL  
VOL: 195 PG: 49

N&F  
RALPH F. JR AND MAFALDA ACQUARULO  
VOL: 558 PG: 572

JUDD DRIVE  
(50' PUBLIC RIGHT OF WAY)



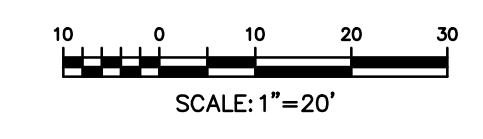
MAP NOTES:

- THIS MAP AND SURVEY HAVE BEEN PREPARED PURSUANT TO THE REGULATIONS OF CONNECTICUT STATE AGENCIES SECTIONS 20-300b-1 THROUGH 20-300b-20 AND "THE MINIMUM STANDARDS FOR SURVEYS AND MAPS IN THE STATE OF CONNECTICUT" ADOPTED JUNE 21, 1996; AMENDED OCTOBER 26, 2018.
- THE TYPE OF SURVEY PERFORMED AND THE MAPPED FEATURES DEPICTED HEREON ARE IN ACCORDANCE WITH THE REQUIREMENTS OF AN IMPROVEMENT LOCATION SURVEY.
- THE HORIZONTAL BASELINE CONFORMS TO A CLASS A-2 ACCURACY. THE TOPOGRAPHIC FEATURES CONFORM TO A CLASS T-2 ACCURACY.
- THE NORTH ARROW AND BEARINGS ARE BASED UPON THE CONNECTICUT STATE COORDINATE SYSTEM N.A.D. 1983 (2011). THE ELEVATIONS ARE BASED UPON THE NORTH AMERICAN VERTICAL DATUM OF 1988 (NAVD 88) USING GEOID 12B. COORDINATES AND ELEVATIONS WERE DETERMINED FROM RTK GPS OBSERVATIONS MADE ON FEBRUARY 24, 2021, USING THE CT DOT RTK NETWORK KNOWN AS ACORN (CTGU BASE), HAVING THE FOLLOWING VALUES:  
  
LATITUDE = N 41° 17' 21.74228"  
LONGITUDE = W 72° 40' 04.44433"  
ELLIPSOID HEIGHT = -18.108M
- UNDERGROUND UTILITIES, STRUCTURES AND FACILITY LOCATIONS DEPICTED AND NOTED HEREON HAVE BEEN COMPILED, IN PART FROM RECORD MAPPING SUPPLIED BY THE RESPECTIVE COMPANIES OR GOVERNMENTAL AGENCIES AND FROM OTHER SOURCES. THESE LOCATIONS MUST BE CONSIDERED AS APPROXIMATE IN NATURE. ADDITIONALLY, OTHER SUCH FEATURES MAY EXIST ON THE SITE. THE EXISTENCE WHICH IS UNKNOWN TO MARTIN SURVEYING ASSOCIATES, LLC. ALL CONTRACTORS ARE REQUIRED TO CONTACT CALL-BEFORE-YOU-DIG AT 1-800-922-4455 FOR LOCATION AND OR STAKEOUT OF ANY UTILITY PRIOR TO ANY EXCAVATION.

MAP REFERENCES:

- "SUNSET ACRES SUBDIVISION MAP PROPERTY OF VICTORIA LESS FITCH ST. - MIDDLETOWN AVE. & MONTOWESE AVE. NORTH HAVEN, CONNECTICUT" SCALE: 1" = 50'. DATED: AUGUST 4, 1962. REVISED: SEPTEMBER 12, 1962. BY: JOSEPH B. BURNS. NORTH HAVEN LAND RECORDS FILE NUMBER: H-755.

**SUBJECT PARCEL**  
47,470 S.F. ±  
1.090 ACRES ±  
VOL. 1005 PG. 707



TO MY KNOWLEDGE AND BELIEF, THIS MAP IS SUBSTANTIALLY CORRECT AS NOTED HEREON.

DEAN MARTIN  
70147  
LICENSE NO.

THIS DOCUMENT AND COPIES THEREOF ARE VALID ONLY IF THEY BEAR THE SIGNATURE AND EMBOSSED SEAL OF THE DESIGNATED LICENSED PROFESSIONAL. UNAUTHORIZED ALTERATIONS TO THIS PLAN RENDER THE DECLARATION HEREON NULL AND VOID.