

**WYRTE PARK**  
6680 ROOSEVELT PL.

**CHARACTER**  
2 acre park with 1 acre open space, unimproved concrete walk used to be a basketball court

**EXISTING FACILITIES**  
-Tee equipment  
-Picnic shelter  
-Park bench  
-Parking lot



**FRUZH PARK**  
8780 TYLER PLACE

**CHARACTER**  
22 acre park (20 acres undeveloped)

**EXISTING FACILITIES**  
-Playground equipment  
-Cascades  
-Picnic shelter  
-Community building  
-Parking lot



**MEADOWDALE**  
1030 WEST 84th AVE.

**CHARACTER**  
8 acres of open space in low-lying land, northern edge of park leads to river's water

**EXISTING FACILITIES**  
-Open space  
-Basket backstop

**MEADOWLAND**  
84th & MADISON ST.

**CHARACTER**  
Small 2 acre lot located on corner lot. All open space

**EXISTING FACILITIES**  
-Fence

**MEADOWLAND ESTATE**  
64th AVE. & 63rd CT.

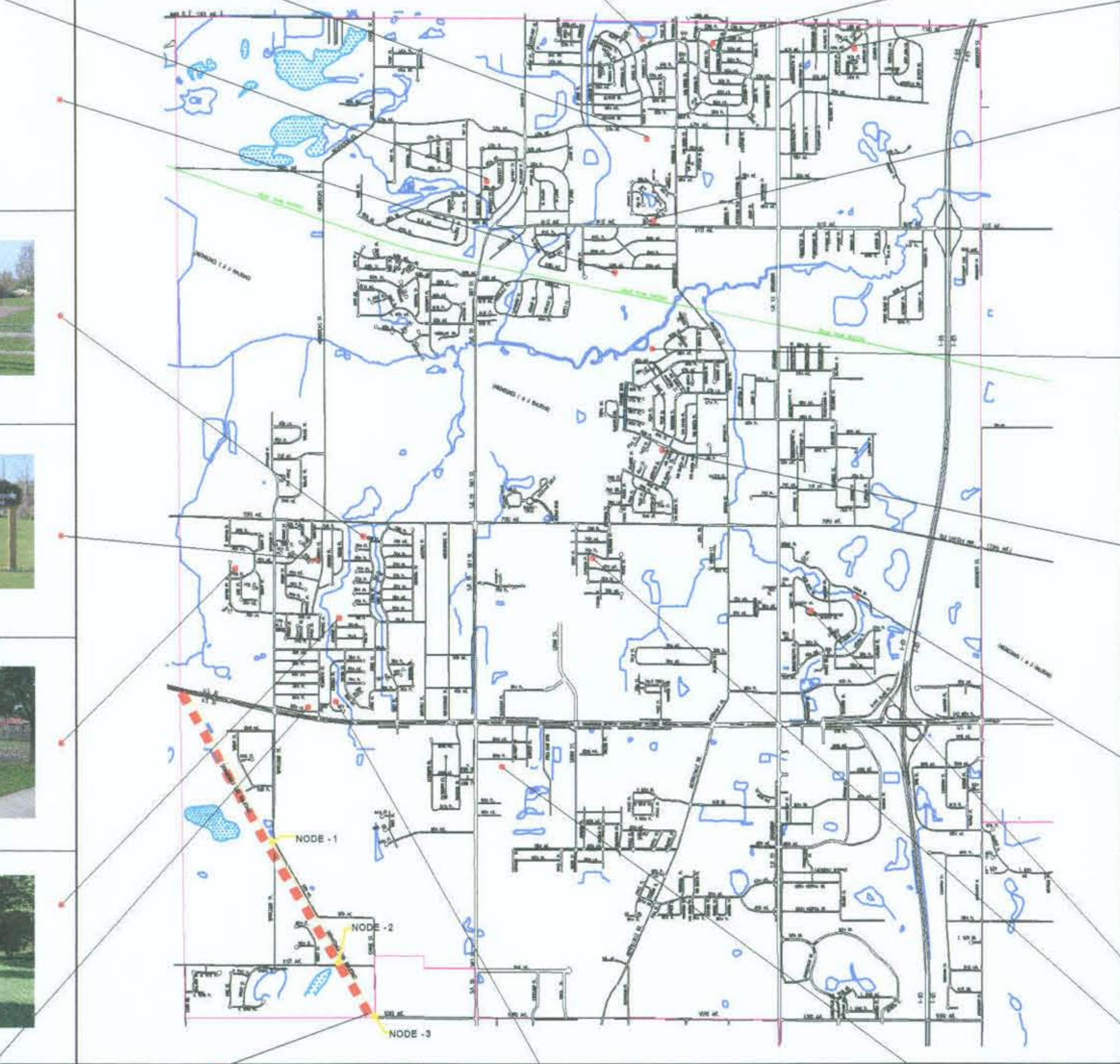
**CHARACTER**  
Small 2.7 acre park surrounded by houses.

**EXISTING FACILITIES**  
-Basket backstop

**JOSEPH PETRUCH, SR. PARK**  
WEST 63rd AVE

**CHARACTER**  
2 acre undeveloped park. Several mature trees on the site

**EXISTING CONDITIONS**  
Site is in good condition.



**BARCLAY VILLAGE**  
61st ST. & POLK

**CHARACTER**  
0.25 acre park at entry to an existing residential neighborhood. Undeveloped and suitable for park development.

**ROSEBAM PARK**  
73rd & CHASE ST.

**CHARACTER**  
4 acre park with nearly 2 acres open space

**EXISTING FACILITIES**  
-Basketball court  
-Playground equipment  
-Picnic shelter



**DEVONSHIRE**  
85th LN. & HARRISON ST.

**CHARACTER**  
Undeveloped 4 acre parcel with a bridge that crosses Turkey Creek to an existing park island. Fenced trail connects park to 85th Avenue.

**EXISTING FACILITIES**  
-Picnic shelter  
-Picnic table

**SOUTHBROOK PARK**  
78th & HENDRICKS ST.

**CHARACTER**  
8 acre park divided into 2 different parcels by Hendricks St. & Jennings Pl.

**EXISTING FACILITIES**  
-Basketball court  
-Tee equipment  
-Picnic shelter



**JOHN A. STEFEL PARK**  
70th PL. HARRISON ST.

**CHARACTER**  
1 acre park on corner lot

**EXISTING FACILITIES**  
-Basketball court  
-Basketball field  
-Tennis court  
-Playground equipment  
-Picnic shelter



**CRESCENT LAKE PARK**  
74th CT. & MORTON ST.

**CHARACTER**  
Small park located on a 4 acre parcel of land, with nearly 3 acres of wooded space that is heavily overgrown.

**EXISTING FACILITIES**  
-Tee equipment  
-Picnic shelter  
-Park bench  
-Swing  
-Merry-go-round



**FOREST HILLS**  
78 INDIAN TRAIL

**CHARACTER**  
Small 1.8 acre park with some open space. Located at the end of Indian Trail with a small creek on the north, east, and west ends of the park.

**EXISTING FACILITIES**  
-Basketball half-court  
-Playground equipment  
-Basketball backstop  
-Picnic shelter  
-Picnic table  
-Parking



**LINCOLN TERRACE**  
78th & HENDRICKS

**CHARACTER**  
4.89 acre park located along both sides of a creek. Has some open space south of 78th st.

**EXISTING FACILITIES**  
-Play structure  
-Swing  
-Slide-Merry-go-round  
-Horseshoe pits  
-Open space



**KURTIS PARK**  
9 1/2 MEADOW LN.

**CHARACTER**  
Small 0.825 acre park (vacant)

**EXISTING FACILITIES**  
-Tee equipment  
-Picnic tables  
-Park bench



**HENDRICKS PARK**  
80th LANE

**CHARACTER**  
1 acre park located off US 30 bordered by residential houses and a strip mall.

**EXISTING FACILITIES**  
-Basketball  
-Basketball field  
-Tee lot  
-Cascades  
-Picnic shelter



**ERIE-LACKAWANNA TRAIL**

**CHARACTER**  
Linear trail connecting with the Schererville to the north and ending at the Crown Point border to the south. paved trail is 12' wide. Trail corridor is approx. 1.80 miles long and 100' wide. Trail corridor owner's approx. 23.94 acres

**EXISTING FACILITIES**  
-Paved trail  
-Asphalt benches  
-Three access nodes



**JENNINGS PARK**  
80th PL. & JENNINGS PL.

**CHARACTER**  
Small 0.75 acre park with open space play area


**EXISTING FACILITIES**  
-Tee equipment



**HEROES PARK**  
8503 TAFT ST.

**CHARACTER**  
Small 1.84 acre park located to Our Lady of Consolation Church on Taft St. Land is currently leased from the church.

**EXISTING FACILITIES**  
-Basketball  
-Picnic tables  
-Play area



**SAVANNAH RIDGE PARK**  
74th & JOHNSON

**CHARACTER**  
Small 0.23 acre park located on corner lot.

**EXISTING FACILITIES**  
-Playground equipment  
-Picnic shelter  
-Park bench