

Merrillville Stormwater Management MS4 Communications Chart

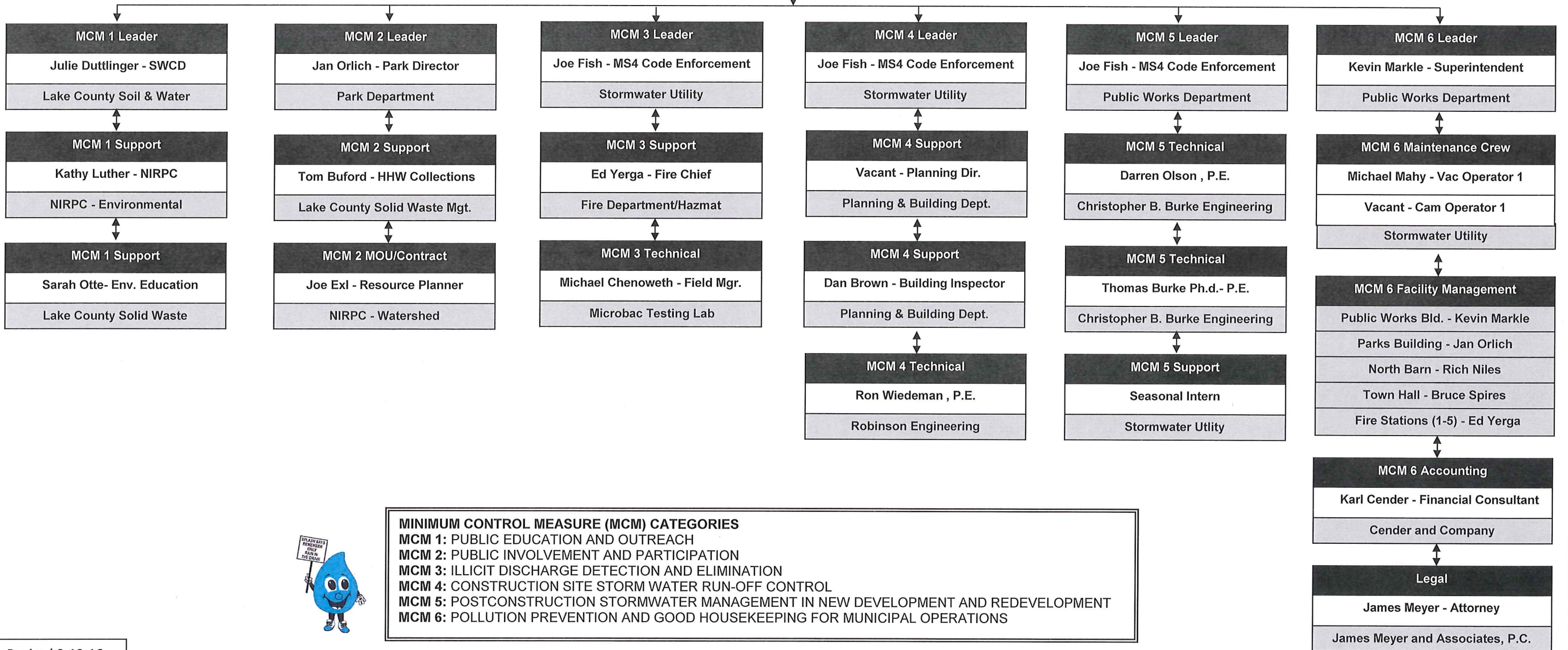


MS4 Board	
L.J. "Bud" Crist - President	
Ralph Simek - Vice President	
Barbara Ghoston - Secretary	
Chrissy Barron - Council Liaison	
Stormwater Management Board	

MS4 Management	
Matt Lake - Executive Director	
Stormwater Utility	

MS4 Management	
Town Council Pres - MS4 Operator	
Town Council	

MS4 Administrative	
Liz Bushemi - Admin. Secretary	
Stormwater Utility	



MINIMUM CONTROL MEASURE (MCM) CATEGORIES
MCM 1: PUBLIC EDUCATION AND OUTREACH
MCM 2: PUBLIC INVOLVEMENT AND PARTICIPATION
MCM 3: ILLICIT DISCHARGE DETECTION AND ELIMINATION
MCM 4: CONSTRUCTION SITE STORM WATER RUN-OFF CONTROL
MCM 5: POSTCONSTRUCTION STORMWATER MANAGEMENT IN NEW DEVELOPMENT AND REDEVELOPMENT
MCM 6: POLLUTION PREVENTION AND GOOD HOUSEKEEPING FOR MUNICIPAL OPERATIONS

