

MADISON COUNTY

PLANNING & DEVELOPMENT

PLAN | GROW | SUSTAIN



www.co.madison.il.us



STORMWATER MANAGEMENT PLAN

What is the Madison County Stormwater Management Plan?

The Madison County Stormwater Management Commission and the Planning & Development Department are completing a Countywide Stormwater Management Plan. The purpose of the plan is to address issues associated with stormwater for both incorporated and unincorporated areas of the county. The countywide approach is intended to



put everyone on the same page and create multi-jurisdictional opportunities instead of addressing each issue individually.

Over the last few years planners have been working with municipalities and townships to identify a wide-range of flooding, drainage, and water quality issues and establish best management practices to address them. The overall goals of the plan are as follows:

- Reduce flooding and mitigate flood damage
- Improve water quality
- Promote best practices for land development

- Develop organizational and regulatory framework for a countywide stormwater program
- Conduct public education and outreach

An outgrowth of the management framework is individual watershed plans. The watershed plans provide an opportunity to identify and examine specific issues on a local level and propose projects to alleviate those issues. The watershed plans also provide greater opportunity for public input through public forums, stakeholder meetings, and resident surveys.

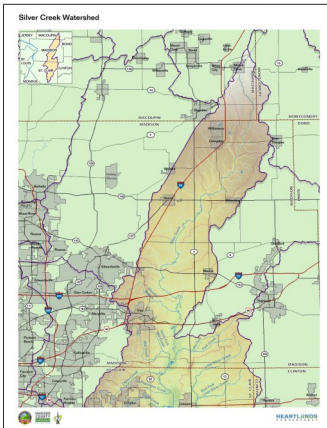
The geographic boundaries of the watersheds are associated with the primary creek system within the larger drainage area. This strategy was chosen because it involves multiple municipalities and townships that are linked together by the creek and each watershed has shared impacts. Planners are currently working on plans for the Silver Creek and Cahokia Creek (which include Indian and Canteen Creeks) watersheds and are gearing up for a process that will cover the American Bottom watershed, which is also known as Judy's Branch. Watersheds that will be addressed in the next few years include Wood River Creek, Sugar Creek, Portage de Sioux, and the East Fork Silver Creek.



The Stormwater Management Commission and the Planning & Development Department have been methodically completing each element of the plan over the last few years. The process has required an incredible degree of cooperation and patience from the municipalities and townships and will hopefully conclude with a fully recommended plan by the commission this year.

Silver Creek Watershed Plan

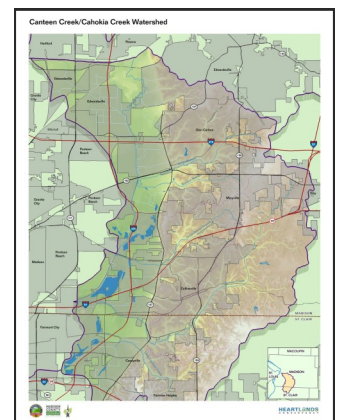
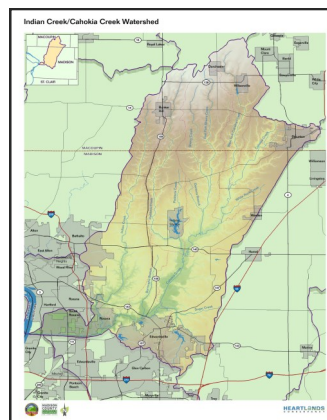
The Silver Creek watershed plan is nearing completion and under review. The process began two years ago after Madison County received a grant from the Illinois EPA. The process has included multiple public forums and stakeholder meetings and a resident survey that garnered a 25% response rate. The watershed area includes Troy, Hamel, Marine, Alhambra, Williamson, and Livingston along with Jarvis, Pin Oak, Marine, St. Jacob, Hamel, Alhambra, and Olive townships.



Cahokia Creek Watershed Plan

The Cahokia Creek Watershed Plan is currently underway and is similar in process and purpose to the Silver Creek Plan. Cahokia Creek is divided into Indian Creek and Canteen Creek areas due to the Cahokia Canal which splits the watershed. Steps are being taken to address both parts of the watershed area equally. The plan is being undertaken in part-

nership with the U.S. Corps of Engineers and several portions of the public engagement effort have been completed. The process began earlier this year and is at least another year from completion. The watershed area includes Edwardsville, Glen Carbon, Roxana, Collinsville, Maryville, and Holiday Shores along with the Edwardsville, Collinsville, Fort Russel, and Omphgent townships.



American Bottom Watershed Plan

Planners are taking the initial steps in the process to complete a plan for the American Bottom watershed. The U.S. Corps of Engineers is offering to partner on the plan by completing the technical components of the document. As with the other watershed plans, Madison County will complete the planning and public engagement components. The watershed area is primarily known as the American Bottom or "the Bottoms". The Madison County portion is Judy's Branch, which is its primary creek. The watershed area includes Granite City, Pontoon Beach, Madison, Venice, and Mitchell along with Chouteau, Nameoki, Granite City, and Venice townships.