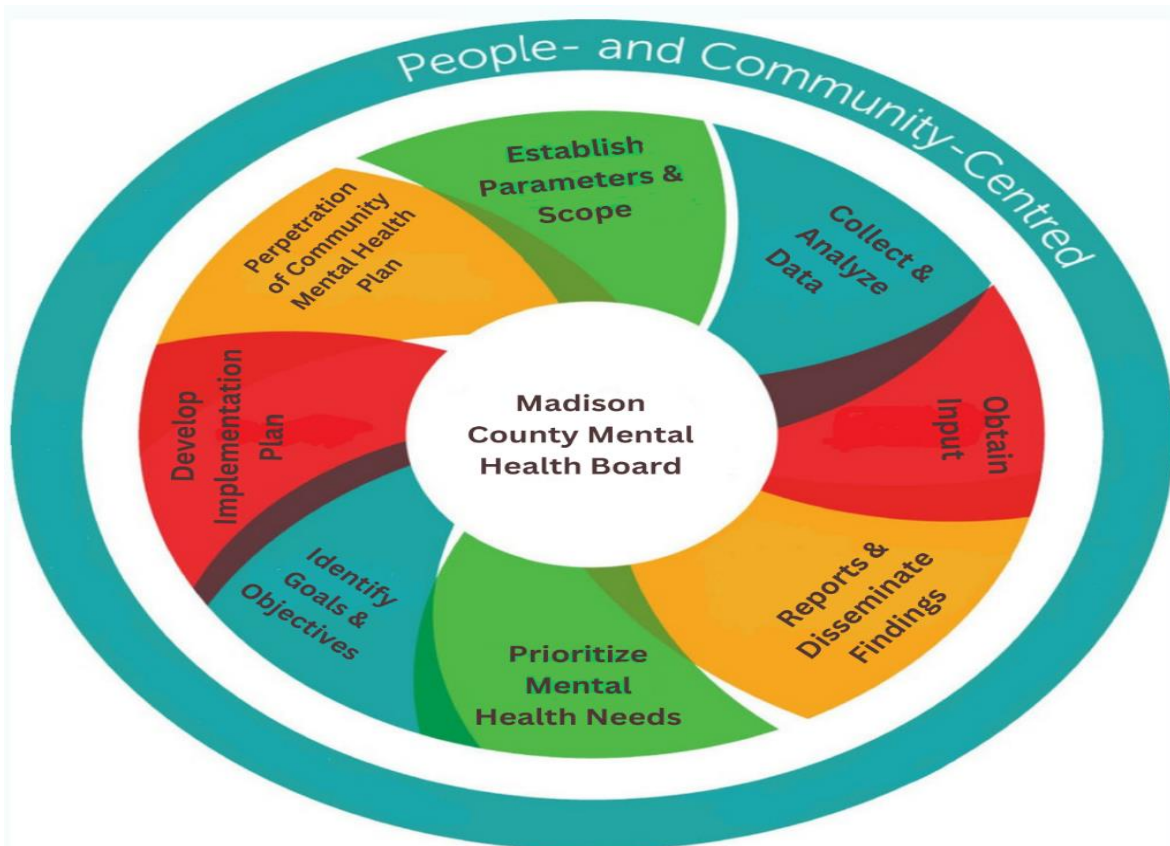




**MADISON COUNTY
MENTAL HEALTH BOARD
BEHAVIORAL NEEDS ANALYSIS 2022
DEMOGRAPHICS SUPPLEMENTAL REPORT**



Introduction

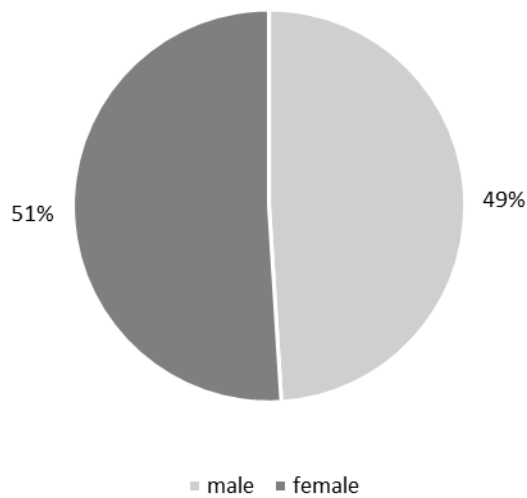
This document discusses the demographics of Madison County, IL and is intended to supplement the information obtained in the 2022 community needs analysis. The analysis was conducted via a survey, which was completed by 110 individuals from various different agencies, services, and consumer groups. More information regarding the survey results can be found in the primary report document.

The information collected here helps individuals in the county better understand the community, what agencies currently serve the area, and what services are needed. Each section will break down demographic data that corresponds to the areas emphasized in the survey. An overview of the general population of Madison County is also provided for comparison. Data sources will be listed in the conclusion along with a summary statement about the data collected.

General County Demographic Data

This section provides an overview of the demographics of Madison County. The following information was derived from United States census reports. As of July 1, 2021, it is estimated that 264,490 people live in Madison County, which is a decrease of over 1,000 individuals from the prior year. Approximately 371.6 individuals live in each square mile of space. The average number of people living in each household is 2.39. Additional characteristics of the population can be found in the following figures and tables.

Biological Sex



Race/Ethnicity	
Race/Ethnicity	Percentage of the Total Population
African American/Black	9.1%
American Indian/Alaska Native	0.4%
Asian	1.1%
Hispanic/Latinx	3.7%
Native Hawaiian/Pacific Islander	0.1%
White	87.1%
Two or more races	2.3%

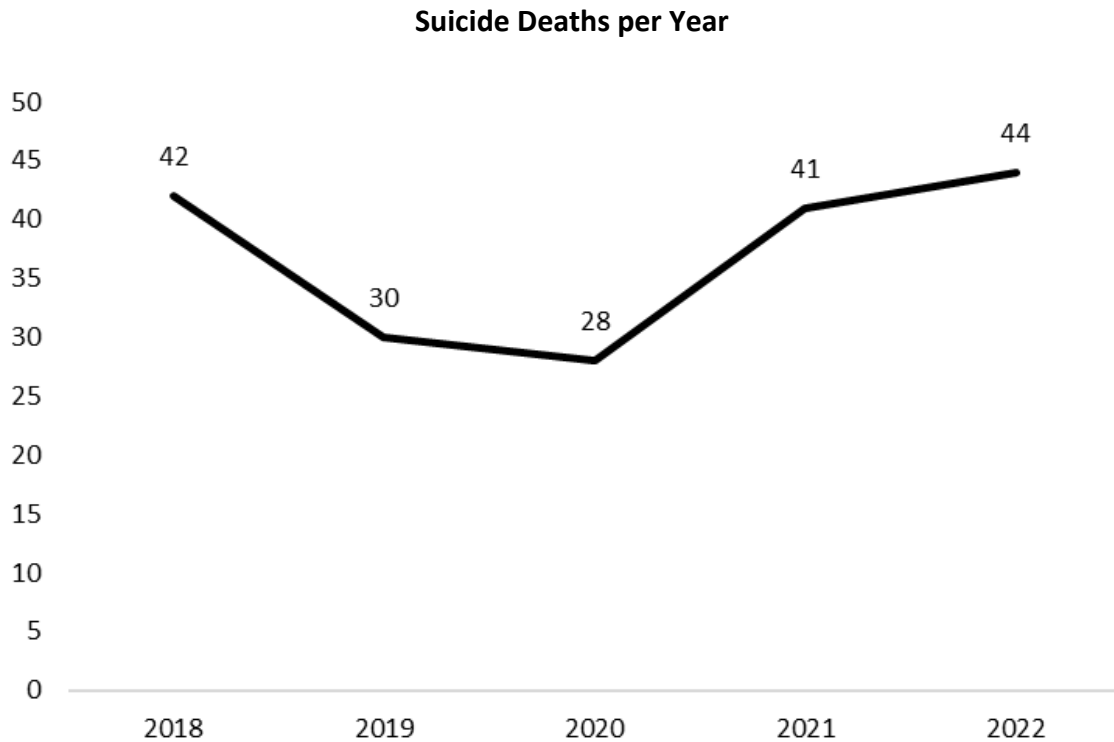
Level of Education	
Education	Percentage of the Total Population
High school diploma or higher	92.7%
Bachelor's degree or higher	27.8%

Income Information	
Median Household Income	\$64,045
Percent below federal poverty line	11.0%

Overview of Specific Topics and Populations

Crisis Management

The following information was collected from the Madison County Coroner's Office's Annual Reports and the Madison County Mental Health Board's Annual Reports. In 2021, the number of calls and intakes received by large mental health agencies such as Chestnut Health Systems and Centerstone of Illinois increased by over 20% from prior years. For 2022, Chestnut Health Systems recorded 655 positive suicide screenings, which is about 44% of the total number of screenings conducted. Furthermore, the number of deaths by suicide increased from 2020 to 2021 and again from 2021 to 2022. In 2022, most people who died by suicide were male (82%), white (95%), and had an average age of 49 years. Additional data can be found in the figures and tables below.



2022 Suicide Cause of Death	
Method	Number of Deaths
Gunshot	18
Hanging	13
Overdose	7
Stab/Cut	3
Other	3

Legal/Correctional System

A 2021 jail survey examining current demographic information for the inmates within Madison County jails showed that the population is mostly male (95%) with an average age of 33 years. Approximately 53% of inmates showed symptoms of mental health concerns, which is higher than the rates experienced by individuals in the general population. Information is also kept regarding the demographics of those involved with the juvenile justice system. According to a report by Dr. Jeremy Jewell, 184 cases were filed in 2021, which is a decrease from the previous year's total of 659. More cases were filed for males (70%) than females (30%). Further information can be found in the following tables.

Race/Ethnicity of Jail Inmates in 2021	
Race/Ethnicity	Percentage
African American/Black	48%
Hispanic/Latinx	4%
White	48%

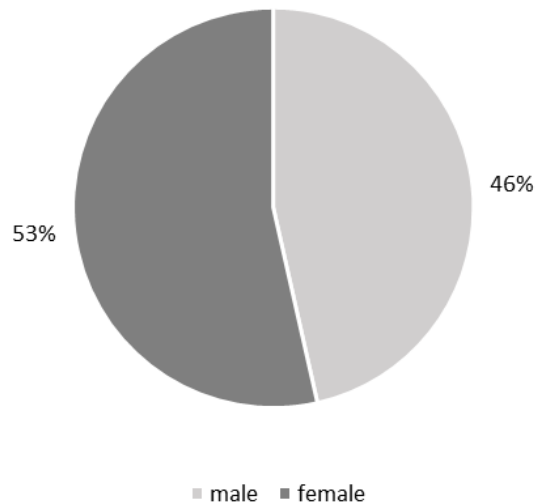
Race/Ethnicity of Youth Cases Filed in 2021	
Race/Ethnicity	Percentage
African American/Black	37%
Asian	2%
Hispanic/Latinx	5%
White	54%
Two or more races	2%

Community Mental Health

The following information was obtained from the Madison County Mental Health Board’s Annual Reports, the Illinois County Health Ratings, and the Illinois Youth Survey. In any given year, approximately 1 in 5 adults will develop a mental illness. A 2022 report showed that Madison County residents reported feeling mentally unhealthy an average of 4.6 days in a month, which is slightly worse than the overall Illinois average of 4.2 mentally unhealthy days in a month. 9,711 individuals within the county received mental health services from board-funded agencies in 2022. More detailed information can be found in the following tables.

Youth Mental Health Reports				
Question	Year	% per grade		
		8 th	10 th	12 th
Seriously consider attempting suicide	2020	N/A	22%	19%
	2022	N/A	22%	21%
Feel so sad or hopeless almost every day for two weeks or more in a row that you stopped doing some usual activities	2020	44%	46%	40%
	2022	36%	45%	46%

Biological Sex Served by MCMHB Funded Services in 2022



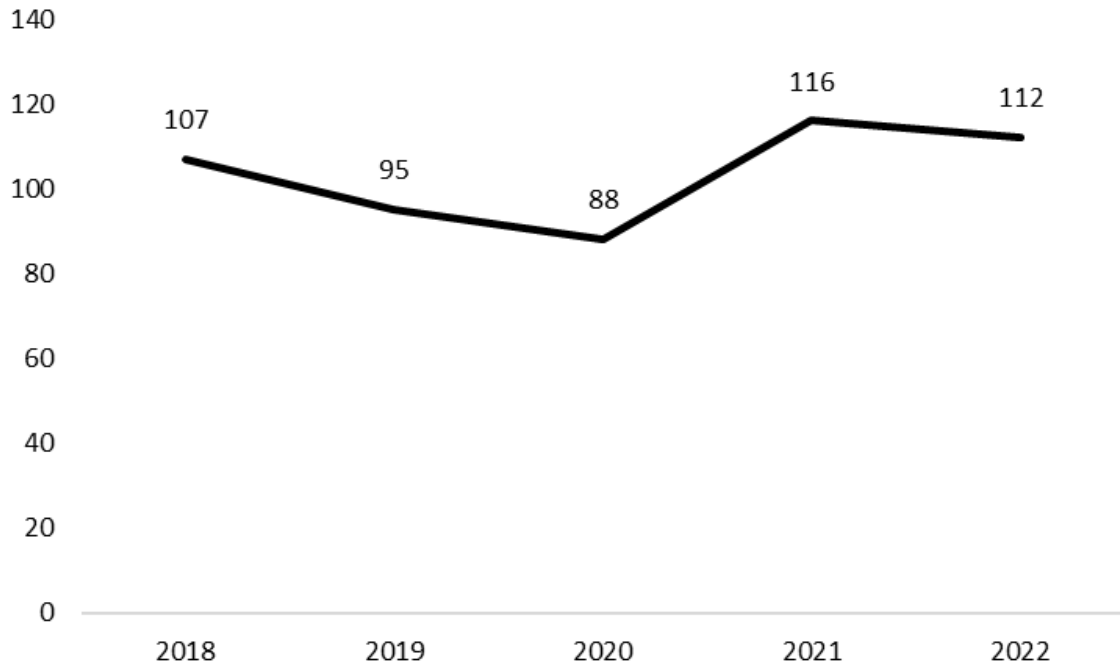
Race/Ethnicity Served by MCMHB Funded Services in 2022	
Race/Ethnicity	Percentage
African American/Black	12%
American Indian/Alaska Native	<1%
Asian	<1%
Hispanic/Latinx	6%
Native Hawaiian/Pacific Islander	<1%
White	67%
Other	14%

Age Served by MCMHB Funded Services in 2022	
Age category	Percentage
Children	14%
Adult	81%
Adult 65+	5%

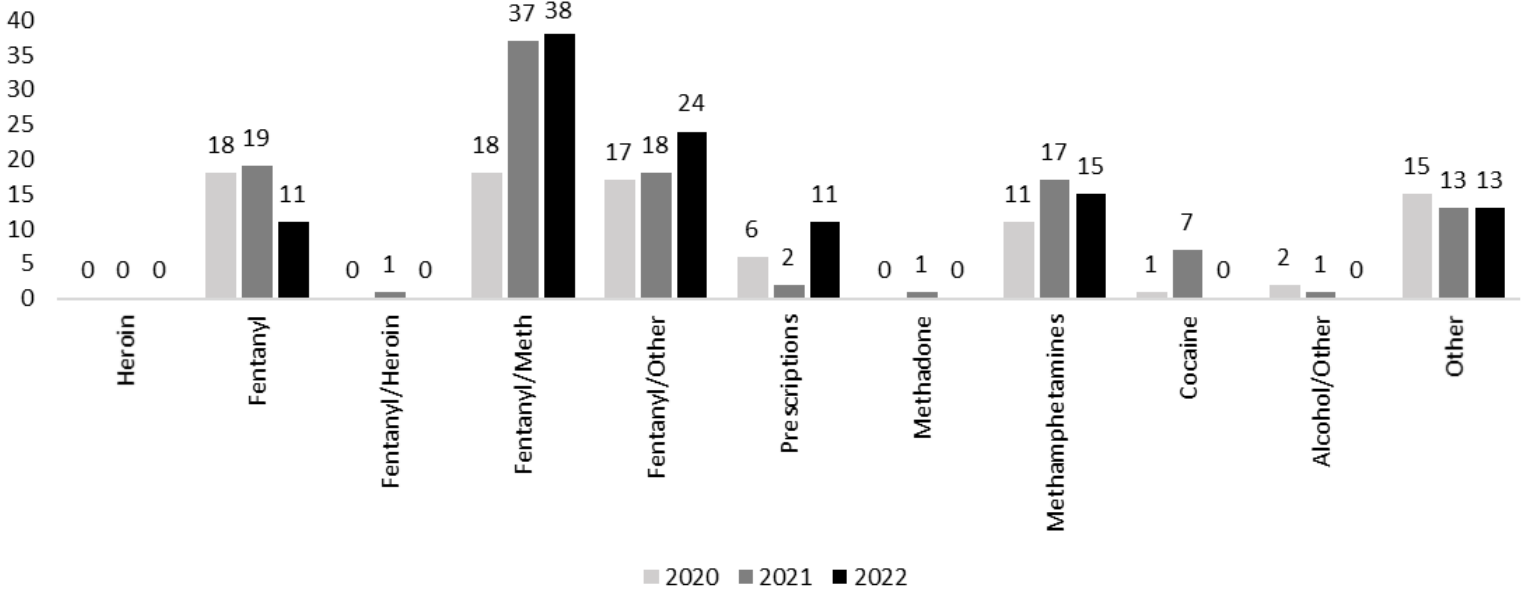
Substance Use/Abuse

The following information was obtained from the Madison County Health Department’s 2021-2026 IPLAN report, the Madison County Coroner’s Office’s Annual Reports, and the Madison County Mental Health Board’s Annual Reports. Substance use concerns in Madison County have increased considerably since 2020, with a 32% increase in overdose deaths in 2021 and only a 3% decrease between 2021 and 2022. Most individuals who died from a drug overdose in 2022 were male (69%), white (93%), and had an average age of 46 years. In 2022, 28,456 individuals in the county received substance use treatment or preventative education services from board-funded agencies. Additional information on substance use and overdose deaths can be found in the following tables and figures.

Overdose Deaths per Year



2020-2022 Changes in Overdose Death Causes



Intellectual and Developmental Disability

The following information was collected from the Madison County Mental Health Board's Annual Reports. The percentage of the Madison County population with Intellectual/Developmental Disabilities (ID/DD) tends to fluctuate between 1.5% and 6% depending on the year. As of 2020, it was estimated that individuals with ID/DD make up about 5.7% of Madison County's population. 2022 reports showed that 787 individuals received services from board-funded agencies within the county. Further demographic information is not available at this time.

Overview of Service Availability

Available service agencies in Madison County are listed below along with the type of behavioral health services offered. Several large agencies and local hospitals are also listed along with some of the specific services they offer to individuals. There are many different agencies within the county and this should not be seen as an all-encompassing list. For a larger list of available resources, see the Madison County resource directory located here:

https://www.madisoncountyl.gov/departments/mental_health/resource_directories.php

Community Agencies per Service Category			
Agency Name	Service Category		
	Mental Health	ID/DD	Substance
Agesmart		X	
AMARE			X
ARCH House			X
Aviary Recovery Center			X
Bedell ARC		X	
Behavioral Health Alternatives	X		X
Call For Help	X		X
Catholic Charities	X		
Centerstone of Illinois	X		X
Chestnut Health Systems	X		X
Child Advocacy Center	X		
Children's Home & Aid	X		
Comprehensive Behavioral Health Care			X
Educational Therapy Center		X	
Epilepsy SWI		X	
Furry Friends	X		
Gateway Regional Medical Center	X		X
Gift of Voice	X		
Heartlinks	X		
Hoyleton Youth & Family Services	X		
Illinois Center for Autism		X	
NAMI	X		
New Opportunities		X	
Refuge	X		
Riverbend Ministries	X		X
St. John's Community Care		X	

Outpatient Mental Health Services Available					
Service Type	Agency Availability				
	Centerstone	Chestnut	Centerpointe of Maryville	Gateway Regional Medical Center	Touchette Regional Hospital
Crisis Intervention	X	X			X
Mental Health Screenings	X	X	X		
Mental Health Assessments	X	X		X	X
Individual/Group/Family Therapy	X	X	X	X	X
Psychiatric Evaluation/Treatment	X	X		X	
Case Management	X	X			
Medication Management	X	X	X	X	X
Housing/Residential		X			
On-Site Pharmacy	X	X		X	X
Telehealth	X	X			

Inpatient/Residential Mental Health Services Available				
Service Type	Agency Availability			
	Centerstone	Chestnut	Gateway Regional Medical Center	Touchette Regional Hospital
Crisis Intervention	X	X	X	X
Individual/Group/Family Therapy	X	X	X	X
Psychiatric Care	X	X	X	
Medication Management	X	X	X	X
Occupational/Physical/Speech Therapies			X	X
Aftercare Planning		X		X
Bed Capacity	32 beds adult 18+	10 beds adult 18+	39 beds 20 adult 19 age 55+	36 beds 26 adult 10 age 55+

Substance Use Recovery Services Available			
Agency Name	Service Type		
	Outpatient	Inpatient/ Detox Beds	Long-term Housing/ Residential
Alton Memorial Hospital	--	2 beds	--
ARCH House	--	--	21 spaces (1 location)
Centerstone	Available	--	--
Chestnut	Available	6 beds	Space varies by program
Gateway Regional Medical Center	Available	--	--
Oxford House	--	--	76 spaces (10 locations)
Touchette Regional Hospital	Available	7 beds	--

ID/DD Housing Providers Available		
Agency Name	Housing Type	
	CILA	ICF/IID
BeDell ARC	21 spaces	--
Beverly Farm	Unknown space	96 spaces
DD Homes	--	48 spaces
Epic	1 space	--
Help Inc	--	16 spaces
Illinois Mentor/Sevita	12 spaces	--
Residential Options Inc	54 spaces	48 spaces

Overview of Madison County Mental Health Board

The Madison County Mental Health Board has a diverse composition, with board membership and staff representing a wide array of educational backgrounds, work experiences, races, ethnicities, and ages. Further details about the current composition of the Board can be seen in the tables below.

MCMHB Member Work Experiences								
Position	Work Experience							
	Behavior health	Criminal Justice	Education	Government	Medical	Non-Profit	Pastoral	Military/Veteran
Board President		X		X				
Vice President	X				X			
Board Secretary					X			
County Board Liaison				X				
Board Member		X	X	X		X		X
Board Member	X					X		
Board Member	X					X	X	
Executive Director	X	X		X	X	X		X
Program Manager	X	X		X		X		X
Office Manager				X				

MCMHB Member Demographics	
Race/Ethnicity	Number
African American/Black	2
American Indian	1
Caucasian/White	7
Hispanic/Latinx	1
Gender	Number
Female	5
Male	5

Conclusions

As previously stated, this document discusses the demographics of Madison County, IL and is intended to supplement the information obtained in the 2022 community needs analysis. Information was obtained from several local organizations, state agencies, and county resources, with links provided below. Overall, the population in Madison County seems to be decreasing slightly. However, in the last few years, rates of suicide deaths, substance use, and mental health concerns have risen in the community, indicating a need for increased mental health services. Specific areas in need of improvement were identified and plans were created to address the needs of the community. These plans are explained in further detail in the primary 2022 community needs analysis document.

Census Information:

<https://www.census.gov/quickfacts/fact/table/madisoncountyillinois/PST045221>

Madison County Health Department 2021-2026 IPLAN Report:

[https://files1.revize.com/revize/madisoncountylus/document_center/Health/Madison%20County%20IPLAN%20-FINAL%206.30.22%20\(003\)%20\(003\).pdf](https://files1.revize.com/revize/madisoncountylus/document_center/Health/Madison%20County%20IPLAN%20-FINAL%206.30.22%20(003)%20(003).pdf)

Madison County Mental Health Board Annual Reports:

https://www.madisoncountylil.gov/departments/mental_health/planning_reporting.php

Madison County Coroner's Office Annual Reports:

https://www.madisoncountylil.gov/departments/county_coroner/annual_reports.php#outer-213

Illinois Youth Survey Reports:

<https://iys.cprd.illinois.edu/results/county>

Madison County Health Ratings and Information:

<https://www.countyhealthrankings.org/explore-health-rankings/illinois?year=2022&measure=Poor+Mental+Health+Days>