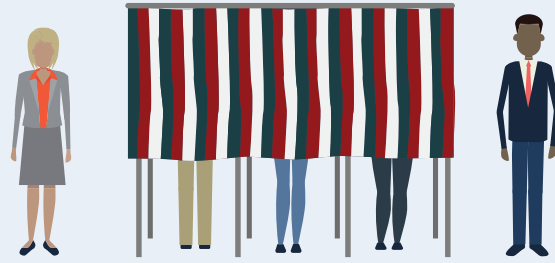


## Election Workers

Almost all processes and procedures require that two or more trained personnel be involved.



## Election Night Reporting

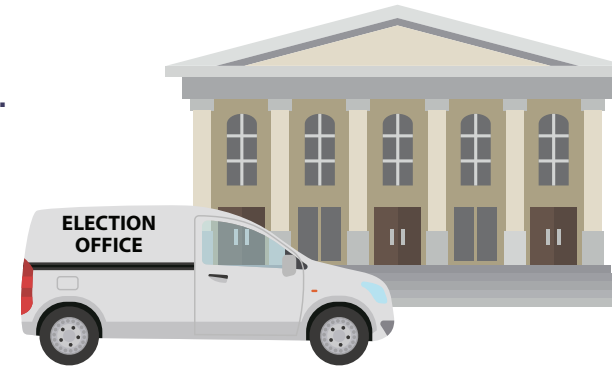
When the polls close on election night, election personnel collect vote counts from each machine and report results to election headquarters.



These officials have taken an oath to uphold state election laws and protect the security of the election.



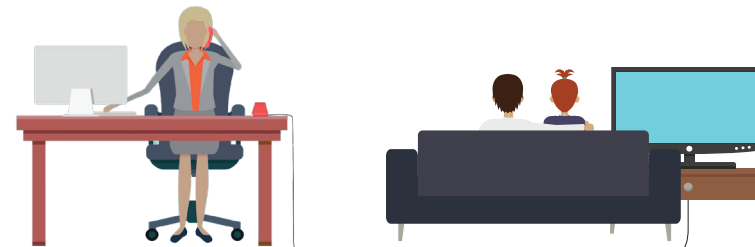
Ballots are securely transported back to election headquarters.



Representatives of political parties or candidates, and sometimes even members of the general public, are allowed to observe and monitor election activities.



Election night results are preliminary, results are not official until the vote is certified by the election office.



## Contingency Planning

If something does happen on or near Election Day, Madison County has back-up plans in place to make sure voters can still cast their ballots.



Madison County maintains all records for audit or recount for a set period as per the State of Illinois' requirements.



# Election Security

*Have you ever wondered  
how elections are secured  
in Madison County?*



[eac.gov](http://eac.gov)

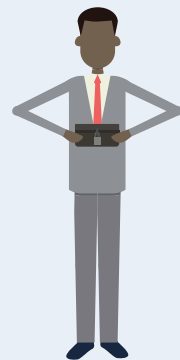


[madisonvotes.com](http://madisonvotes.com)

# Voter Registration



Voter registration ensures only those meeting state eligibility requirements are able to vote, and helps keep track of who has cast a ballot.



Only authorized personnel have access



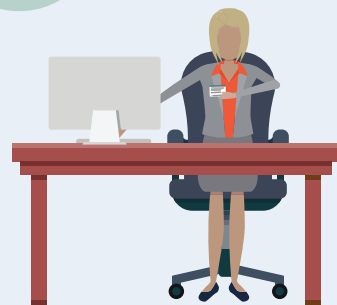
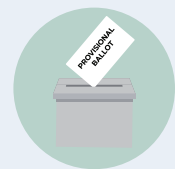
All database traffic is monitored



Routine backups

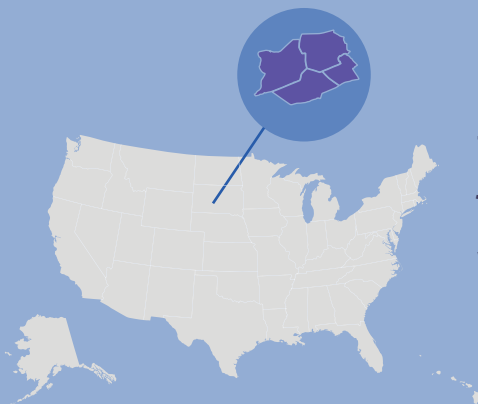


Personal information is only released in accordance with a state's legal guidelines.



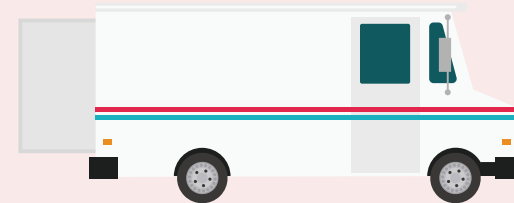
Voters who do not appear on the registration list can cast a provisional ballot. After election day, their ballot is counted only after their voter registration has been verified

# Decentralized Structure



U.S. elections are conducted independently across thousands of local jurisdictions, each following unique laws and statutes, which means there's no single point of access.

Vote by mail ballots are protected by state rules and procedures that determine how they must be handled.

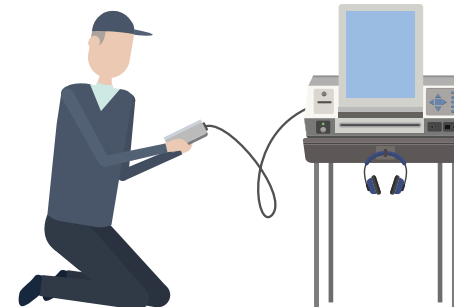


Mailed envelopes must be signed so that signature can be compared to the signature on the voter's registration form.

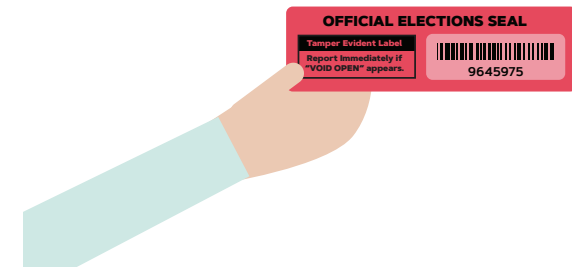


# Election Equipment

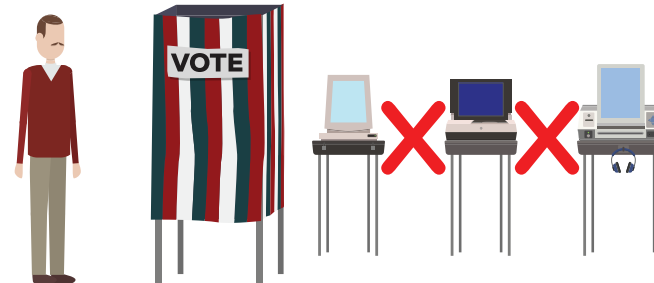
Each piece of voting equipment is put through logic and accuracy tests to make sure ballots will be counted correctly.



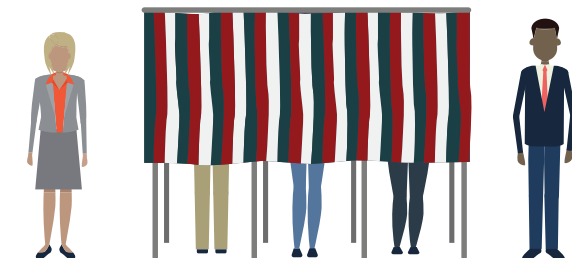
Ballots and election equipment are secured with tamper-evident seals and transported to polling places in secure containers.



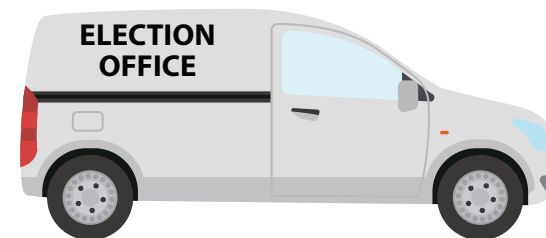
Madison County has policies forbidding voting machines from connecting to the internet.



While election materials are in use, they are closely watched by election workers trained to notice and respond to any suspicious behavior.



When it isn't being used, voting equipment is stored in a facility accessible only to trained election personnel.



Each time election materials and equipment switch hands, it has to be documented.

