

- | Series No. | Topic                                      |
|------------|--|
| CDCI - 001 | Community Development                      |
| CDCI - 002 | Voluntary Annexation                       |
| CDCI - 003 | Code Enforcement                           |
| CDCI - 004 | Trash Service and Recycling                |
| CDCI - 005 | Temporary Food Permits                     |
| CDCI - 006 | Animal Protection & Control                |
| CDCI - 007 | Basement Finishing Regulations             |
| CDCI - 008 | Deck Requirements                          |
| CDCI - 009 | Fence Regulations                          |
| CDCI - 010 | Home Occupation Regulations                |
| CDCI - 011 | Room Additions                             |
| CDCI - 012 | Swimming Pools, Spas, Hot Tubs             |
| CDCI - 013 | Board of Adjustment Applications           |
| CDCI - 014 | Planning & Transportation                  |
| CDCI - 015 | Rezoning                                   |
| CDCI - 016 | Subdivisions                               |
| CDCI - 017 | Accessory Structures                       |
| CDCI - 018 | Flood Plain Management                     |
| CDCI - 019 | Zoning District Regulations                |
| CDCI - 020 | Transit—Handi Wheels                       |
| CDCI - 021 | Public Works                               |
| CDCI - 022 | Sidewalk Regulations                       |
| CDCI - 023 | Storm Water Management                     |
| CDCI - 024 | Street Light Regulations                   |
| CDCI - 025 | Grading Permits                            |
| CDCI - 026 | Right-of-Way and Easements                 |
| CDCI - 027 | Residential Parking District Regulations   |
| CDCI - 028 | Sewer Connection & Extension Regulations   |
| CDCI - 029 | JC Regional Water Reclamation              |
| CDCI - 030 | Household and Commercial Grease            |
| CDCI - 031 | Mosquito Control                           |
| CDCI - 032 | Jefferson City Memorial Airport            |
| CDCI - 033 | JEFFTRAN                                   |
| CDCI - 034 | Veteran's Plaza                            |
| CDCI - 035 | Electrical Permits                         |
| CDCI - 036 | Plumbing Permits                           |
| CDCI - 037 | Environmental Code Enforcement             |
| CDCI - 038 | Disconnect Downspout                       |
| CDCI - 039 | Flood Hazard Mitigation                    |
| CDCI - 040 | Storm Drain Marking                        |
| CDCI - 041 | Solid Waste Mngmt                          |
| CDCI - 042 | Lawn & Garden Waste Mngmt                  |
| CDCI - 043 | Illicit Discharges                         |
| CDCI - 044 | Household Hazardous Waste Disposal         |
| CDCI - 045 | Erosion Control & Streambank Stabilization |
| CDCI - 046 | Backwater Valve Rebate Program             |
| CDCI - 047 | Glass Recycling                            |
| ITCI - 048 | GIS  |



CITY OF JEFFERSON  
 Department of Community Development  
 320 East McCarty Street  
 Jefferson City, MO 65101



## Solid Waste Management

# CITIZEN INFORMATION SERIES



For More Information:

PLEASE  
 PLACE  
 STAMP  
 HERE



## Solid Waste Management

**Solid Waste**, or trash, is comprised of commonly discarded items like old clothing, bottles, cans, paper products, product packaging, food scraps, furniture, appliances, etc. According to a 2008 U.S. Environmental Protection Agency report, 4.5 pounds of solid waste, on average, is generated every day by every person in the United States.

Prior to recycling / composting of solid waste, the percentage of items discarded are broken down as follows:

- Paper & Paper Products—31%
- Yard Trimmings—13.2%
- Food Scraps—12.7%
- Plastics—12%
- Metals—8.4%
- Rubber, Leather and Textiles—7.9%
- Wood—6.6%
- Glass—4.9%
- Other—3.3%

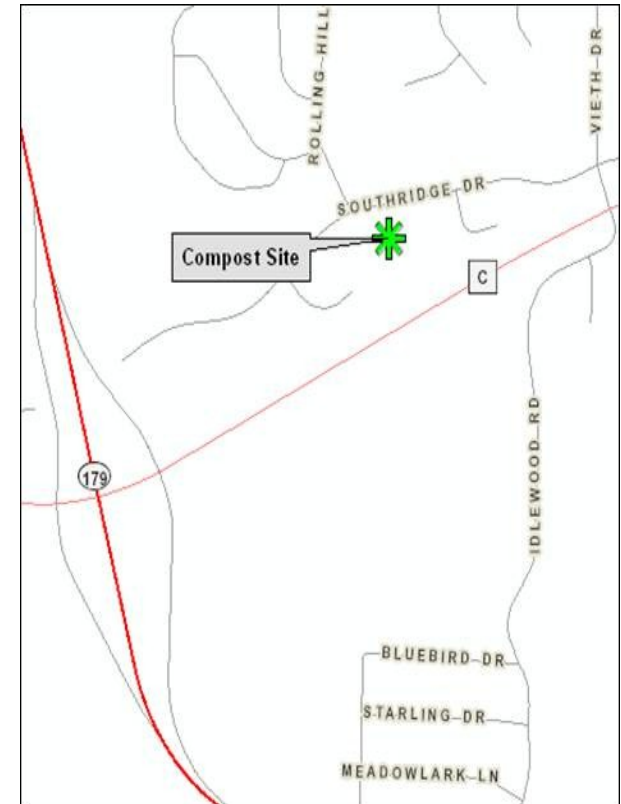
Presently in the United States, 30% of the solid waste generated is recovered and either recycled or composted, 12.7% is burned at combustion facilities, and the other 54.3% is placed in landfills.

From a water quality standpoint, the main solid

waste items that are of concern are grass trimmings, leaves and tree limbs. Many homeowners use waterways and storm sewers to dispose of their yard waste instead of mulching / composting it themselves or taking it to the **free Jefferson City Yard Waste Recycling Center** at 2417 Southridge Drive. When this material is piled on stream banks, it suffocates vegetation and kills the roots that are holding soil in place, resulting in streambank erosion and an elevated silt and sediment load in our waterways. When homeowners dispose of their yard waste in waterways and storm sewers, they create several problems. First, as the material decomposes, oxygen in the water is depleted, harming aquatic species & degrading their habitat. Second, elevated nutrient levels are released into the water, resulting in increased levels of algae and damage to aquatic habitat. Third, when homeowners purposely fill storm sewers and drainage ways with their yard waste, the system can become blocked, leading to potential flooding of area homes. Therefore, the result is that City crews must monitor and clean the drainage system so that it functions properly. The additional labor that is required by City crews costs all taxpayers of the City, and personnel must be diverted from other important work to clean the storm sewer system.

The recycling and composting trend is on the increase, due to public educational efforts, as well as Federal, State and Local mandates.

### Jefferson City Yard Waste Recycling Center 2417 Southridge Drive



Citizen Information Brochures  
may be obtained from the  
Department of Community Development  
320 E. McCarty St., Jefferson City MO 65101  
Office hours are 8 am - 5 pm, Mon - Fri.  
573.634.6410  
[www.jeffcitymo.org/CD](http://www.jeffcitymo.org/CD)

