

2000 LOCAL LANDMARK DESIGNATIONS AWARD CEREMONY

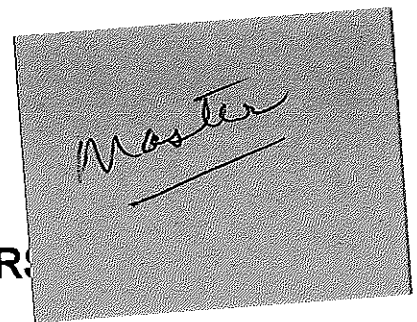


HISTORIC PRESERVATION COMMISSION

WEDNESDAY, MAY 10, 2000
4:00 P.M.

CITY COUNCIL CHAMBERS

JOHN G. CHRISTY MUNICIPAL BUILDING
320 EAST MCCARTY STREET
JEFFERSON CITY, MISSOURI 65101



2000 LANDMARK AWARDS

presented by

COMMISSION ON HISTORIC PRESERVATION CITY OF JEFFERSON

**Steve Veile, Chair
Dottie Dallmeyer, Vice Chair
Dori Drummond, Secretary
Jane Beetem
Michelle Enke
Ken Ferguson
Sandy Hopkins
Mary Kinstler**

Carol Blaney, Council Representative

DEPARTMENT OF PLANNING & CODE ENFORCEMENT

**Charles Lansford, Interim Director
Ron Davenport, Building Regulations Division Director
Diane Wall, Secretary**

2000 LANDMARK DESIGNATION AWARDS

Program

- I. Introduction and Welcome
 - A. Steve Veile, Chairman, Historic Preservation Commission
 - B. Tom Rackers, Mayor, City of Jefferson
- II. Heritage Art Contest Winners
 - A. Dottie Dallmeyer, Historic Preservation Commission and Historic City of Jefferson
- III. Heritage Essay Contest Winners
 - A. Greg Stockard, Historic City of Jefferson
- IV. Landmark Designation Award Winners
 - B. Steve Veile
- V. Historic Preservation Week Reminders
 - A. Other Activities
 - B. Videos on JCTV
- VI. Photos of Winners with Mayor

Thanks for coming!

Heritage Art Contests

9th to 12th grade

- 1st Place* "Cole County Courthouse as Seen From Capitol Avenue" Pastel
Sara Mercer
Daughter of Susan Mercer
- 2nd Place* "Pope House: Rose Wood Music" Ink
Adam Voight
Son of Bill & Terry Voight
- 3rd Place* "St. Peter Church" Pastel
Michelle Hoefener
Daughter of Patricia Hoefener

6th to 8th grade

- 1st Place* "Ivy Terrace" Watercolor
Sara Leonberger
Daughter of Bob & Tracy Leonberger
- 2nd Place* "Hawkins Law Firm" Watercolor
Tori Sommerer
Daughter of David & Ginger Sommerer
- 3rd Place* "Governor's Mansion" Watercolor
Lindsay Woodland
Daughter of Linda Woodland
- Honorable Mention* "Temple Bethel" Watercolor
Paige Meyer
Daughter of Patrick & Rochelle Meyer
- Honorable Mention* "Union Hotel-Amtrak Station" Ink
Ian Pitts
Son of Beverly Pitts

Grand Prize Winner / High School Essay Contest

"The Moreau Old Heights School"
Greg Woods
Son of Karen Shipper & Randy Woods

2000 LANDMARK AWARDS

*United States Post Office
131 West High Street
United States Government
Don Knoth, Officer in Charge*

*Lester Shepard Parker House
624 East Capitol Avenue
Nicholas M. & Mildred Monaco, owners*

*Pat's Place
700 West Main Street
c/o Don Conner*

*Democrat Building
300 East High Street
Charles & Dorlene Prather, Trustees*

*210 Lafayette Street
Dennis Ceglenski & Toni Prawl, owners*

**CITY OF JEFFERSON, MISSOURI
COMMISSION ON HISTORIC PRESERVATION**

**United States Post Office
131 West High Street**

The City of Jefferson enjoys great fame for being the seat of State Government. The distinctive cityscape is dominated by some grand State buildings. In this scheme of grand buildings is the United States Post Office, architecturally significant and distinct by its own. The structure reflects the simple classism of federal architecture of the Depression period and the intertwining of State and Federal influence within the architectural base of Jefferson City.

This structure has the distinction of being one of only two remaining facilities where the United States Post Office and Federal Courts share the same building.

The building is a classically derived Roman Temple-style government structure with Tuscan columns supporting the 2nd story entablature. A gabled roof surmounts the attic (3rd story), set back to appear as flat. Entry doors at the 1st and 10th bays are reached by low riser steps from the sidewalk.

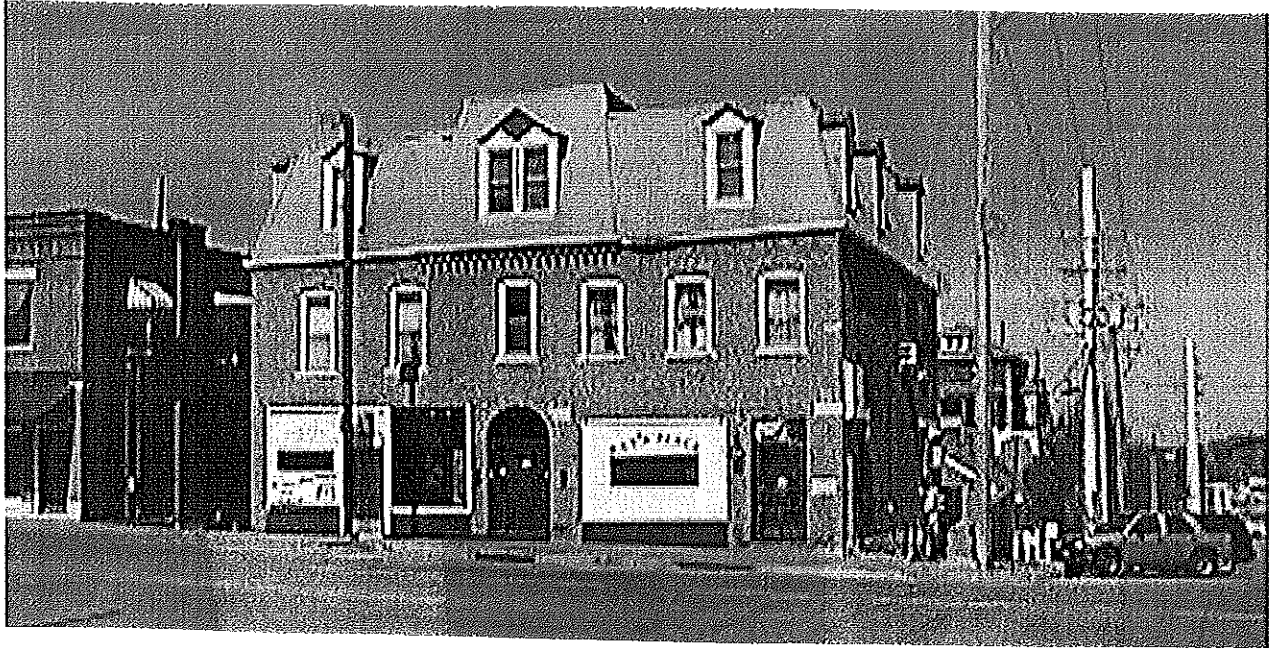


**Lester Shepard Parker House
624 East Capitol Avenue**



This home, built in 1915 was originally used for single family and is located on the southwest corner of East Capitol Avenue and Lafayette. This is an exceptionally detailed building and an excellent example of Neo-Classical architecture. The central portico with Ionic columns and pilasters are notable; the pilaster detailing is surprising, since the pilasters are in such close proximity to the front facing columns and are barely seen. Stone quoins accent the corners. The entablature detailing, window detailing, and portico-terrace-side porch treatment are also notable. The use of this building is now residential/multi-family.

Pat's Place
700 West Main Street



The Pat's Place building (bar area) was built in 1863 and opened as a "drinking" establishment in 1870. According to history (and no one has been able to prove otherwise) Pat's Place is the oldest bar in continuous operation west of the Mississippi. It has been a "drinking" place for 128 years. Some have asked whether it was opened during prohibition - well, would you say, if you were? The back bar was provided by beer distributors in the early part of the 20th century for \$1.00. Such a bar became known in history as a "dollar bar." Most of the original fittings are still here.

From what we know, prior to 1931, the bar was known as "Last Chance", so called because the original Missouri River Bridge, at the end of the street, lead to a "dry" county across the river . . . so it was the last chance one had to have some libation before crossing the bridge. Conversely, the sign had "First Chance" on the reverse side . . . later it was known as the "Bridge Exchange."

At the turn of the century, Jefferson City had become a booming Capitol City. This building at 700 West Main, just up from the Capitol, became a popular "watering hole" for railroaders who rented rooms in the building's 2nd and 3rd floors.

The name "Pat's Place" was established in 1931 when its new owner, "Pat" Conrad, rechristened his new establishment. The Place remained in the family until the 1980s when it was sold to one, then another owner, an Irishman from Cork, Ireland. The current owner, Wyn Riley, herself of Irish heritage, took over in 1995. She dubs it an Irish "pub" because of the tradition of the original British concept of the "pubbick" or public house where locals gathered to talk and enjoy often in the atmosphere of music and frivolity. In the British Isles the local pub is still a main source of daily

Pat's Place (continued)
700 West Main Street

entertainment and in Ireland the flow of "stout" be it Guinness, Murphy's or whatever brand, is abundant . . . at the drop of a hat someone is apt to sing a song, play a fiddle or dance a jig . . . such is a "pub" where friends meet and you meet friends . . . and in this tradition, Fred Brown, the manager of Pat's Place is just about the friendliest guy you'll ever meet.

Wyn is a theater buff and has actually performed in the Cork Opera House in Ireland many times. All the theater programs you see in the bar area are ones she has saved from Broadway shows she has attended. The wall opposite the Ladies/Mens rooms is called Wyn's wall . . . about productions she has done.

The Democrat Building
300 East High Street



The Democrat Building was built in 1873 by the Honorable Joseph Richard Edwards for his news paper, the *Cole County Democrat*, a democratic weekly. The *Cole County Democrat* was established in 1884 as a weekly paper. Later it became a daily newspaper. Edwards, born in Jefferson City in 1847, was a member of the bar. He was Prosecuting Attorney of Cole County and a stockholder and director of Merchant's Bank. The building later became Delmonicos Grocery Store. It has had dentist offices in the building and was for many years Jack & Jill Clothing Store for children.

210 Lafayette Street



This home was built in 1885 with a carriage house in the rear. Today there is a patio area in rear of residence between house and carriage house. Some descriptions of the residence are there is a south bay with 1-light sash with transom set in stone surrounded with half-column sides, decoratively carved lintel, stone sill with carved consoles, and decorative terra cotta spandrel panel below. Second story has a south bay with 1-light sash with round arch transom and stone "horseshoe" surround. Sides of second story have projecting "piers" with carved corbelled stone blocks rising to impost segmental arch gable of south bay. Gable has projecting wood apex decoration - elaborate Queen Anne decorative carving with center open as round arch; gable sides rest on impost area above wood cornice. Entry area to north is in stepped - back bay with elaborately carved Queen Anne door with wood surround set in recess. Elaborate stone entryway has rusticated stone sides set on wide stone pedestals with carved stone end scrolls, Romanesque columns frame entryway and rest on stone pedestals; stone lintel has foliated corner blocks. The rear (west) elevation has an open wood porch with wood stairway and posts. Recessed rear entry is set in round arch opening; single gable dormer.

*City of Jefferson, Missouri
Historic Preservation Commission
Previous Local Landmarks*

1993 Landmarks

Temple Beth El	-	318 Monroe Street
The Jefferson City Community Center	-	608 East Dunklin Street
Parson's House	-	105 Jackson Street
The Col. Darwin W. Marmaduke House	-	700 East Capitol Avenue
Housing Unit #4, "A" Hall/ Jefferson City Correctional Center	-	631 E. State Street

1994 Landmarks

Dulle Home	-	800 St. Mary's Boulevard
Richmond Hill Grocery	-	628 West Main Street
St. Peters Roman Catholic Church	-	216 Broadway Street
Union Pacific Depot	-	301 State Street
National Cemetery and City Cemetery	-	900 and 1000 block East McCarty Street

1995 Landmarks

Central United Church of Christ	-	118 W. Ashley
International Shoe Building	-	1101 East Capitol Avenue
Cole County Courthouse	-	High & Monroe Street
McClung Park	-	1114 Chestnut Street
The Villa Panarama Mansion	-	1310 Swifts Highway

1996 Landmarks

Monaco House	-	1122 Moreau Drive
Grace Episcopal Church	-	217 Adams Street
B. Gratz Brown House	-	109 Madison Street
Bodtenschats Buehrle House	-	707 Washington Street
Winan's Gallery/Caplinger's Clothing	-	207 East High Street

1997 Landmarks

The Byrd-Haar House	-	110 Bolivar Street
Warwick Village	-	1507 East McCarty Street
First United Methodist Church	-	201 Monroe Street
Lincoln University	-	820 Chestnut Street
Lohman's Landing	-	100 Jefferson Street

1998 Landmarks

Governor's Mansion and Garden	-	100 Madison Street
Burch-Berendzen Grocery Building	-	304 East High Street
Cherry Street Grocery	-	423 Cherry Street
Carnegie Library	-	212 Adams Street
Jefferson City Correctional Center	-	631 East State Street

1999 Landmarks

Ephriam B. Ewing House	-	512 East Capitol
Whaley's East End Drug	-	630 East High
The Bassman House		
(materials from the Price Mansion)	-	207 West McCarty
Cliff Street Mansion	-	722 Cliff Street
Houchin House	-	611 East Capitol

**CITY OF JEFFERSON
HISTORIC PRESERVATION COMMISSION
CRITERIA FOR LOCAL LANDMARK DESIGNATION**

- 1. Significance**
- 2. Property type; individual or district**
- 3. Location**
- 4. Integrity - Preservation**
- 5. Endangered**
- 6. Willing to accept and display the plaque**