

*revised  
(new)*

# **1999 LOCAL LANDMARK DESIGNATIONS AWARD CEREMONY**



**HISTORIC PRESERVATION COMMISSION**

**WEDNESDAY, MAY 12, 1999  
12:00 NOON**

**CITY COUNCIL CHAMBERS**

**JOHN G. CHRISTY MUNICIPAL BUILDING  
320 EAST MCCARTY STREET  
JEFFERSON CITY, MISSOURI 65101**

# **1999 LANDMARK AWARDS**

presented by

## **COMMISSION ON HISTORIC PRESERVATION CITY OF JEFFERSON**

**Kenneth Ferguson, Chair  
Dottie Dallmeyer, Vice Chair  
Michelle Enke, Secretary  
Dori Drummond  
Sandy Hopkins  
Mary Kinstler  
Eddie Madison, Jr.  
Ronald M. Reynolds  
Steve Veile  
Carol Blaney, Council Representative**

## **DEPARTMENT OF PLANNING & CODE ENFORCEMENT**

**Keith DeVault, Director  
Janice McMillan, Senior Planner  
Diane Wall, Secretary**

## 1999 LANDMARK AWARDS

Welcome and Overview . . . . . Ken Ferguson, Chair  
Commission on Historic Preservation

Presentation of Plaques . . . . . Mayor Tom Rackers

*Ephriam B. Ewing House*  
*512 E. Capitol Avenue*  
*Steve Veile/Communique, Inc., owner*

*Whaley's East End Drug*  
*630 East High Street*  
*C. Forrest Whaley; Trustee*  
*Connie and Darryl Hubble and Keith Dahler, owners*

*The Bassman House*  
*(built with materials from the Price Mansion)*  
*207 West McCarty Street*  
*Lewis and Mary Bassman, owner*

*Cliff Street Mansion*  
*722 Cliff Street*  
*Thom Mace and Liz Hagar-Mace, owner*

*Houchin House*  
*611 East Capitol Avenue*  
*James and Elizabeth Weber, owner*

Following the Landmark Awards Ceremony the Historic City of Jefferson will announce the winners of the Essay and Art Contests.
--

Art and Essay Contest Winners . . . . . Historic City of Jefferson  
Dottie Dallmeyer, Heritage Project Chair  
Greg Stockard, President

**Ephriam B. Ewing House**  
**512 East Capitol Avenue**

Property was sold in 1873 to W. C. Young as part of inlot 364. Young was a contractor and probably built the house for his family, but sold it to Ephriam B. Ewing who died soon after, leaving a wife and six children who remained in the house. The five daughters were reared there. His only son, W. W. Ewing, had by then graduated from law school at M.U.

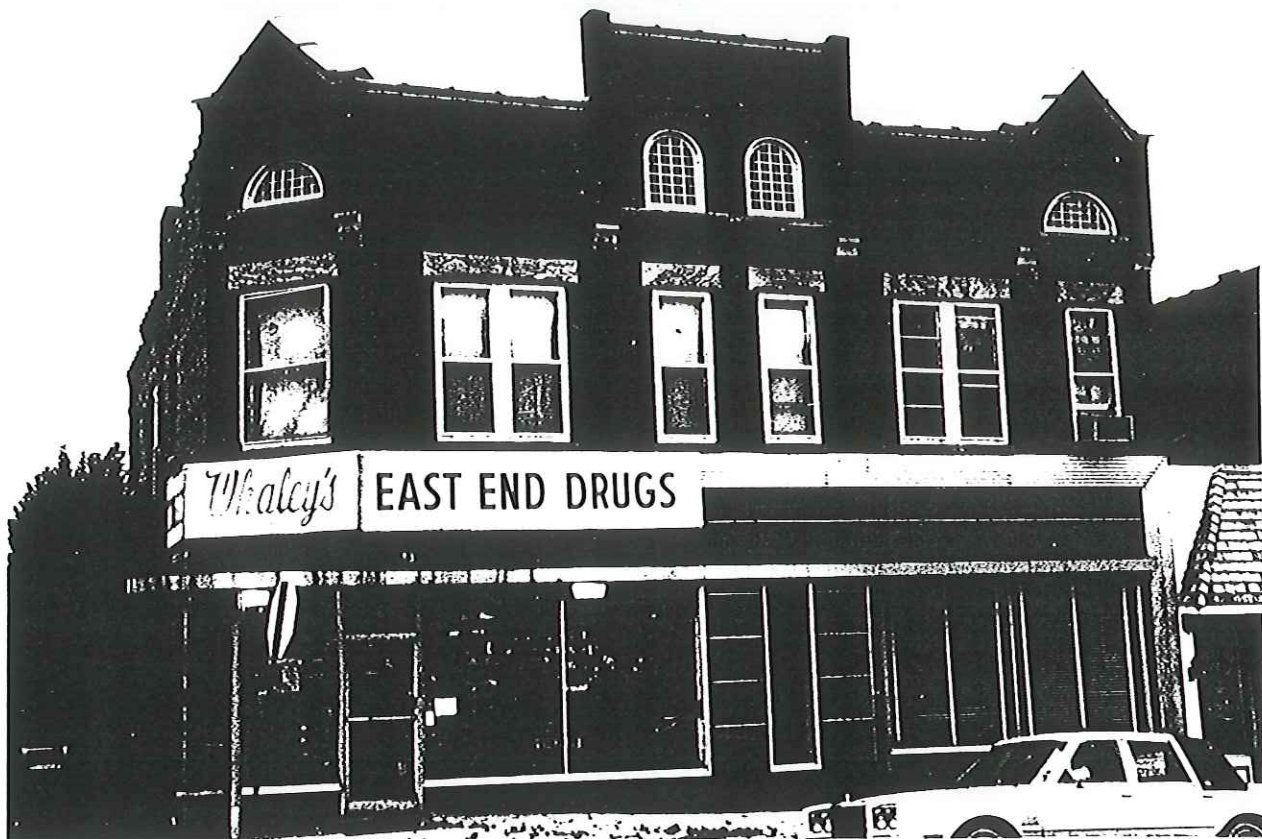
The style of the house is Vernacular Victorian brick with Italianate features. Some of the features of note are the boxed cornice with frieze and brackets, segmented arched windows, 10 foot tall double front door of solid pine and stone decorated lug sills. The windows are different sizes because the house was built with prison labor. Prisoners took hand made bricks and placed them whole and built windows to fit.

Some inside features are a grand stairway to the second floor with beautiful Newel posts and banisters, set in the large front hall. Very tall pocket doors are between the hall and parlor. Also, the pocket doors are between the parlor and dining room. There are 14 foot ceilings and large windows let in lots of light. There is an enclosed stairway to the third floor. When Dr. Summers bought the house in 1964 from Maurice and Marion Perry, it had been made into eight apartments. In 1983 Dr. Summers had the house put on the National Historic Register and set about restoring it. On May 21, 1984, his efforts were recognized by the Cole County Historical Society as part of National Historic Preservation Week. A plaque was presented to him for the building. The restoration was a labor of love.



**Whaley's East End Drug**  
**630 East High Street**

*Historical Facts compiled by C. Forrest Whaley and Connie Hubble.*



The land (lot 507) on which Whaley's East End Drug is located was a part of the total 2,560 acres deeded to the State of Missouri. Dated February 20, 1823, the purpose of the acreage was for the development and location of the state capitol. This large area was divided into smaller sections and auctioned or sold to developers and/or speculators. Robert W. Wells bought this lot as a portion of a larger acreage on December 28, 1846, for \$1.00. It was deeded from the Missouri permanent seat of government.

By 1896, the land had been sold several times. Then on December 8, 1896, John and Jennie Vandiver bought the lot, and began building the 2-story structure. Research has shown that originally the business may have been a grocery and/or meat market with two apartments above.

Whaley's East End Drug  
630 East High Street  
(cont.)

In 1901, John and Jennie Vandiver sold the business to Jennie Fischer - possibly their daughter. Then on December 29, 1906, G.A. Fischer and wife, Jennie, sold the business to the druggist who had worked for them, Fred J. Ott. In 1921, Mr. Ott formed "East End Drug Company." He sold his stock and business to a group of citizens.

On June 15, 1943, C. Forrest Whaley and wife, Mary M. (Peggy), and Fred Tanner purchased the business. In 1949, Fred J. Ott sold the building to the Whaleys and Fred Tanner. Mr. Tanner sold his percentage to the Whaleys a few years later. C. Forrest (Red) Whaley still owns the building today.

Remodeling, to our knowledge, was done in the 1940's and again in the 1970's. Our goal is to renovate the store back to the 1950 era.

W. Darryl Hubble and Keith Dahler purchased the soda fountain along with the business and its fixtures in November of 1998. The fountain is not original to the building. It is believed to date back to the 1920's. The pewter deco art and partial crown molding adds a most intriguing look to the fountain area.

The stools that were stored in the rafters of the basement have been cleaned, polished, and reupholstered. We anxiously await the return to their original spot in the store. They will be replaced after the black and white tile is laid over the weekend.

After the renovation and redecoration is completed, we plan to host a "soda jerk" reunion. We are finding that many business men in our community have served time as "soda jerks", or in later years, as "fountain boys." They will be invited to trade a reminiscent story of their experience at East End Drug for a tee-shirt and a nickel Coke. Hopefully, some will share old photos as well.

The business is a member of the National Soda Jerks Association out of Omaha, Nebraska. This group will be an additional source for the history of soda fountains still in existence.

**The Bassman House**  
**(built with materials from the Price Mansion)**  
**207 West McCarty Street**

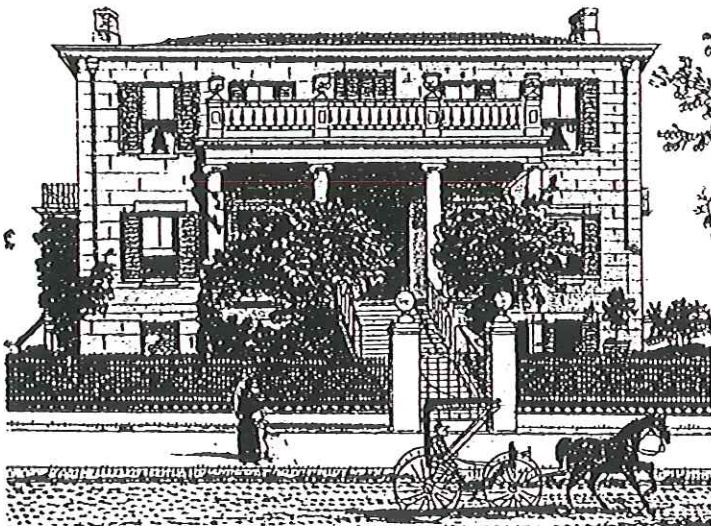
This historic Price Mansion stood at the location now occupied by the Supreme Court Building on High Street. It was built in 1841 and was torn down in 1905. The materials were used to build what is now the Bassman House on 207 West McCarty Street.

Thomas Lawson Price was born in Virginia. He came to Missouri in 1831 and because of a cholera epidemic in St. Louis, continued his journey to Jefferson City, where he opened a mercantile business. Price invested his profits in land in the rapidly-growing city, and became quite wealthy.

Between 1838 and 1849 he operated a stage line from St. Louis to Jefferson City. This was the first stage between the two cities, but not the first stage line in Missouri. Price later founded a bank, organized a building and loan agency, and invested in the railroad.

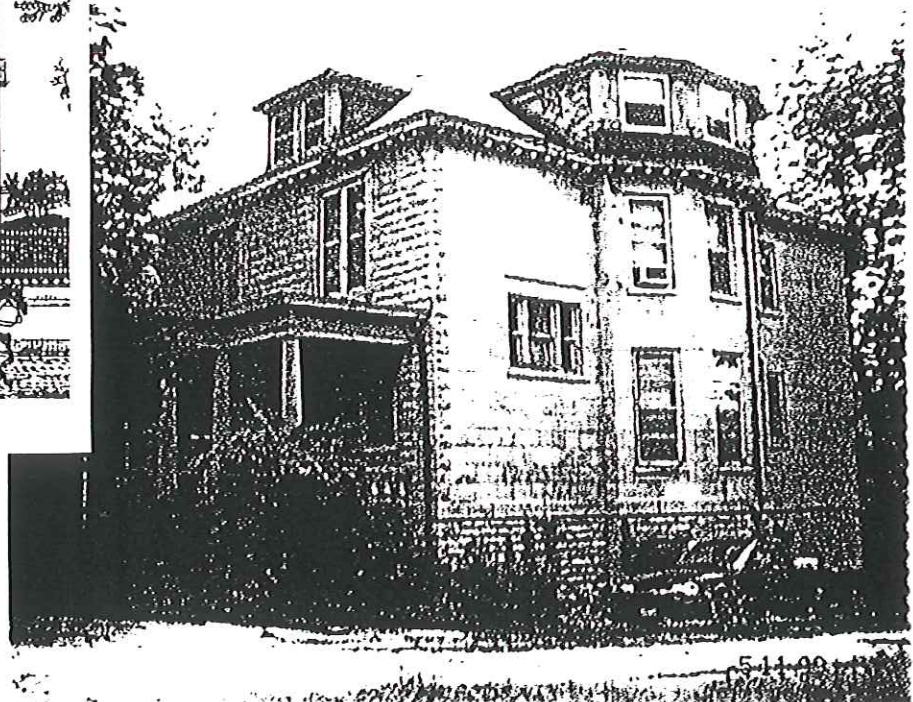
In 1839, Jefferson City incorporated, and Thomas Lawson Price became its first mayor. He served as lieutenant governor under Austin King, held public office for one term in the legislature in 1860, and became a Congressman in 1862. At one point during the Civil War, Price was appointed brigadier general, and was for a short time in command of the defense of Jefferson City.

The mansion was furnished in an elegance unusual in the frontier days of Missouri. Many of the furnishings were purchased in France. Some of the most beautiful artifacts, including chandeliers and mirrors, from this early mansion are on exhibit in the Cole County Historical Society Museum.



Thomas Lawson Price Mansion, 1891

The Bassman House, 1999





Cliff Street Mansion  
722 Cliff Street  
(cont.)

After, the Federal Judicial district was divided in the mid-1870s and relocated to Kansas City and St. Louis, Judge Krekel moved to Kansas City. The house was sold to the Ambrose family who owned it for about eight years. The Turner family purchased the house in 1882 and owned it until it was sold to the Wolfe's. A photograph of the house can be found in the 1900 Directory for Jefferson City. As mentioned above, the Wolfe's purchased the property in 1913 and subdivided the area that is now

Cliff Street between Bolivar and Clay. At some point during their ownership the Wolfe's converted the structure to two apartments. During 1933-34 the house was repossessed by a mortgage company and converted to four apartments which remained until January of 1999. The house has now been converted back into a single family dwelling. Liz Hagar-Mace and Thom Mace are planning to open a Bed & Breakfast Inn and share an important part of the history of the City of Jefferson with those who come to visit.

**Houchin House**  
**611 East Capitol Avenue**

James Albert Houchin was a civic leader in Jefferson City. He came to Jefferson City in 1891 as office man for the Charles L. Lewis Clothing Company. After four years with this concern he organized the Star Clothing Manufacturing Company which, under his control became one of the leading concerns of its kind in the US. During the period when prison labor was sold to manufactures, Mr. Houchin was one of the largest employers. Houchin acquired extensive real estate interests in the city and operated widely known stock farms in Cole, Callaway, Morgan and Pettis counties. He became known as one of the leading breeders of fine saddle horses in America and as the owner of the famous stallion Astral King. He also developed a fine herd of Herefords.

The house was erected around 1900 on the location of the old Jobe home. Later Houchin purchased all the property on Capitol Avenue from his house to Marshall Street and removed one four-flat and two residences to develop an extensive side garden. In 1910 the house was enlarged and the yard was enclosed by a stone wall. At the rear of the property on Marshall Street a servants home was constructed. A circular drive entered from Marshall Street along a lower terrace and provided exits from the garage and porte cochere.



*City of Jefferson, Missouri*  
*Historic Preservation Commission*  
*Previous Local Landmarks*

1993 Landmarks

Temple Beth El	-	318 Monroe Street
The Jefferson City Community Center	-	608 East Dunklin Street
Parson's House	-	105 Jackson Street
The Col. Darwin W. Marmaduke House	-	700 East Capitol Avenue
Housing Unit #4, "A" Hall/ Jefferson City Correctional Center	-	631 E. State Street

1994 Landmarks

Dulle Home	-	800 St. Mary's Boulevard
Richmond Hill Grocery	-	628 West Main Street
St. Peters Roman Catholic Church	-	216 Broadway Street
Union Pacific Depot	-	301 State Street
National Cemetery and City Cemetery	-	900 and 1000 block East McCarty Street

1995 Landmarks

Central United Church of Christ	-	118 W. Ashley
International Shoe Building	-	1101 East Capitol Avenue
Cole County Courthouse	-	High & Monroe Street
McClung Park	-	1114 Chestnut Street
The Villa Panarama Mansion	-	1310 Swifts Highway

1996 Landmarks

Monaco House	-	1122 Moreau Drive
Grace Episcopal Church	-	217 Adams Street
B. Gratz Brown House	-	109 Madison Street
Bodtenschats Buehrle House	-	707 Washington Street
Winan's Gallery/Caplinger's Clothing	-	207 East High Street

1997 Landmarks

The Byrd-Haar House	-	110 Bolivar Street
Warwick Village	-	1507 East McCarty Street
First United Methodist Church	-	201 Monroe Street
Lincoln University	-	820 Chestnut Street
Lohman's Landing	-	100 Jefferson Street

1998 Landmarks

Governor's Mansion and Garden	-	100 Madison Street
Burch-Berendzen Grocery Building	-	304 East High Street
Cherry Street Grocery	-	423 Cherry Street
Carnegie Library	-	212 Adams Street
Jefferson City Correctional Center	-	631 East State Street

**CITY OF JEFFERSON  
HISTORIC PRESERVATION COMMISSION  
CRITERIA FOR LOCAL LANDMARK DESIGNATION**

- 6. Significance**
- 7. Property type; individual or district**
- 8. Location**
- 9. Integrity - Preservation**
- 10. Endangered**
- 11. Willing to accept and display the plaque**