

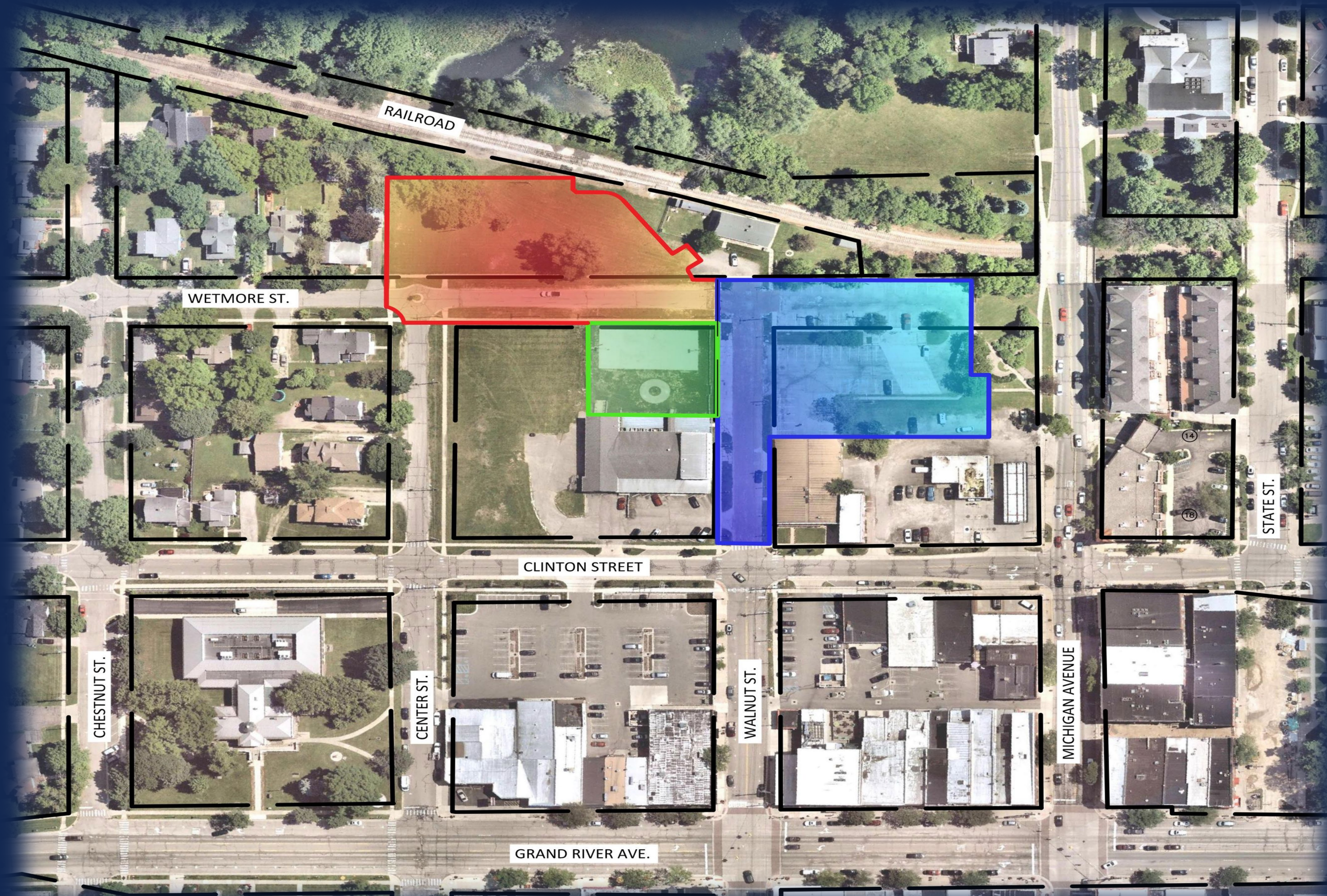
- City of Howell – Depot Lot

- A brief update on the progress we are making in our community.

GRISSIM
METZ ASSOCIATES
ANDRIESE



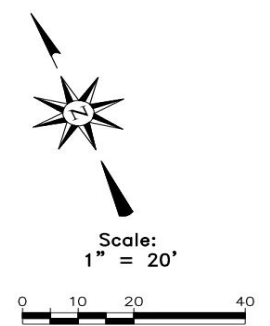
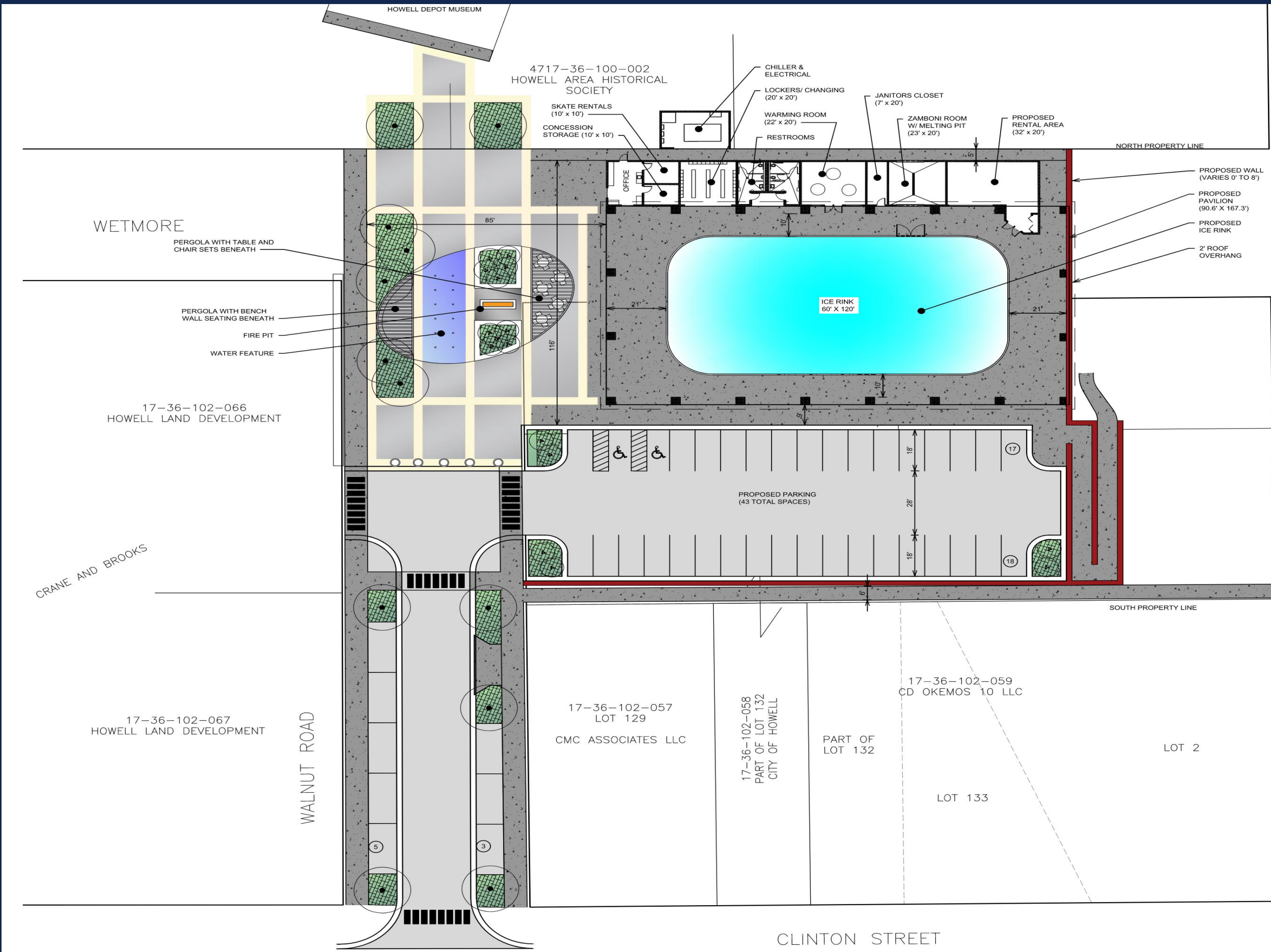
HRC
HUBBELL, ROTH & CLARK, INC
CONSULTING ENGINEERS SINCE 1915



• Project area showing MDOT, M Street and Depot Lot properties



Exhibit A



TOTAL SPACES:

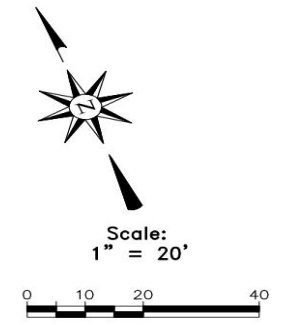
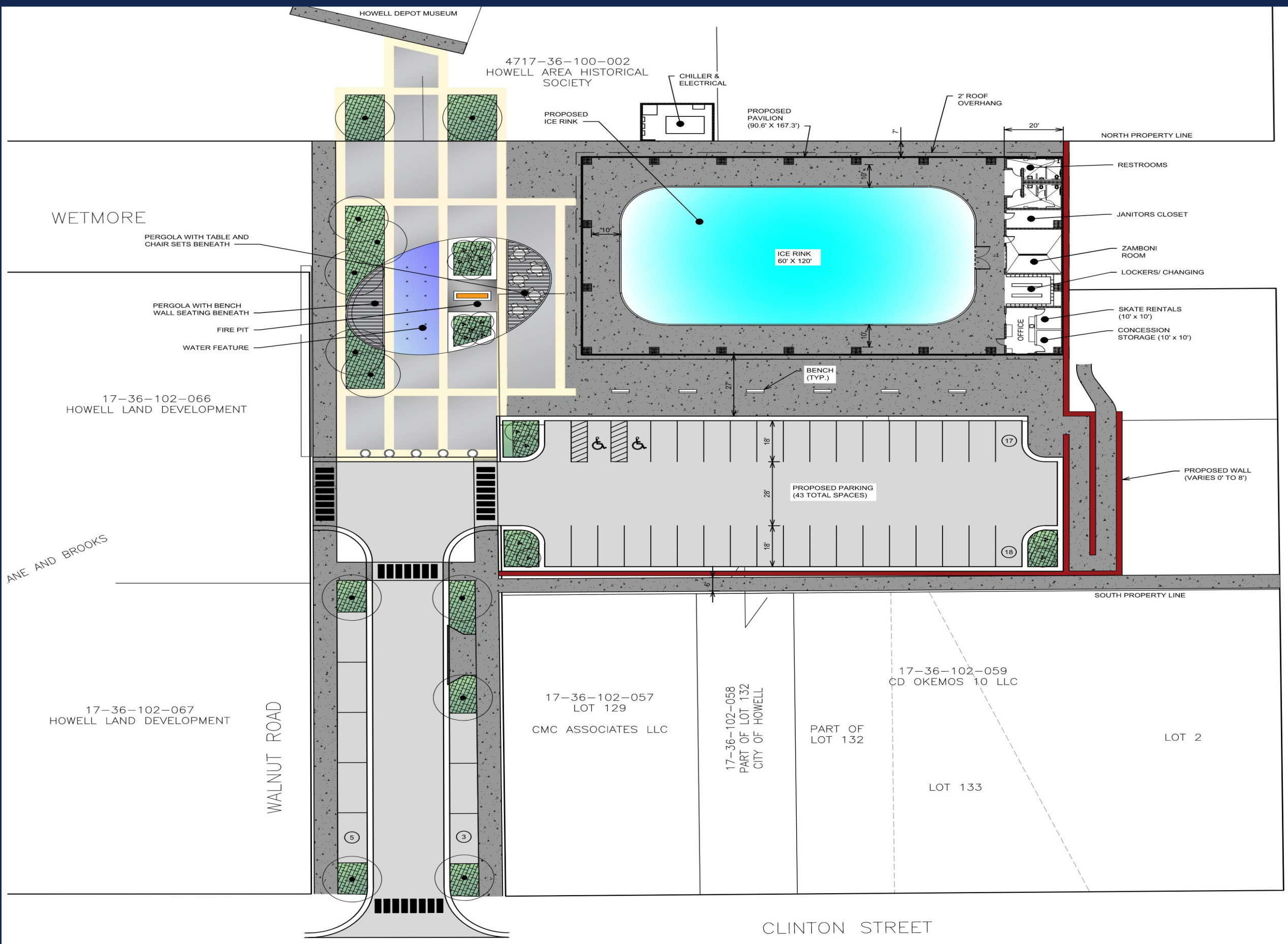
- 41 PARKING SPACES
- 2 HANDICAP SPACES

LEGEND

	PROPOSED ASPHALT
	PROPOSED CONCRETE
	COLORED OR STAMPED CONCRETE
	STAMPED CONCRETE

- Building amenities located along the north side of property
- All other site features (parking lot and public gathering area) are same between A and B

Exhibit B



TOTAL SPACES:
 - 41 PARKING SPACES
 - 2 HANDICAP SPACES

LEGEND

	PROPOSED ASPHALT
	PROPOSED CONCRETE
	COLORLED OR STAMPED CONCRETE
	STAMPED CONCRETE

- Building amenities located along the east side of property
- All other site features (parking lot and public gathering area) are same between A and B

EXHIBIT A

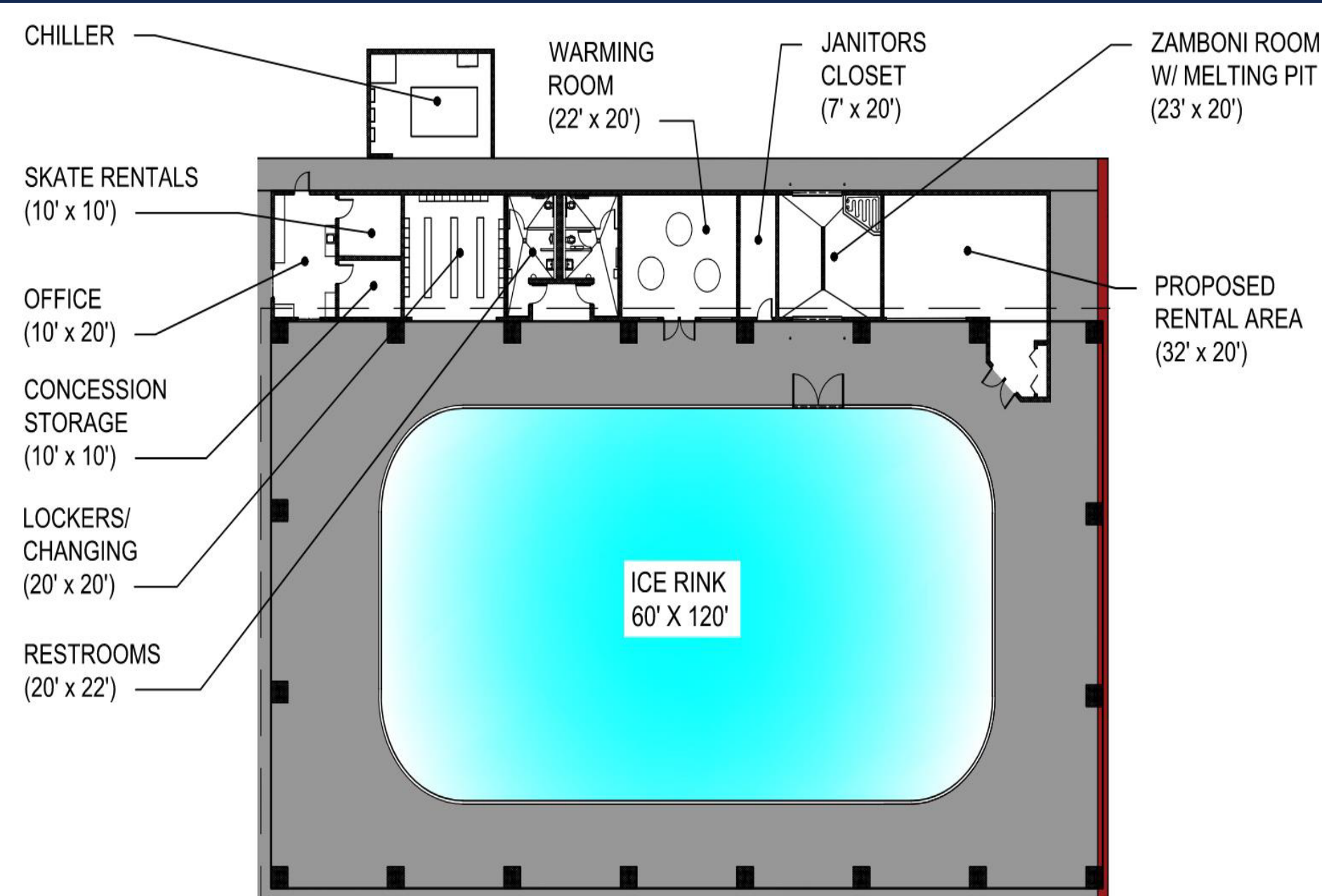
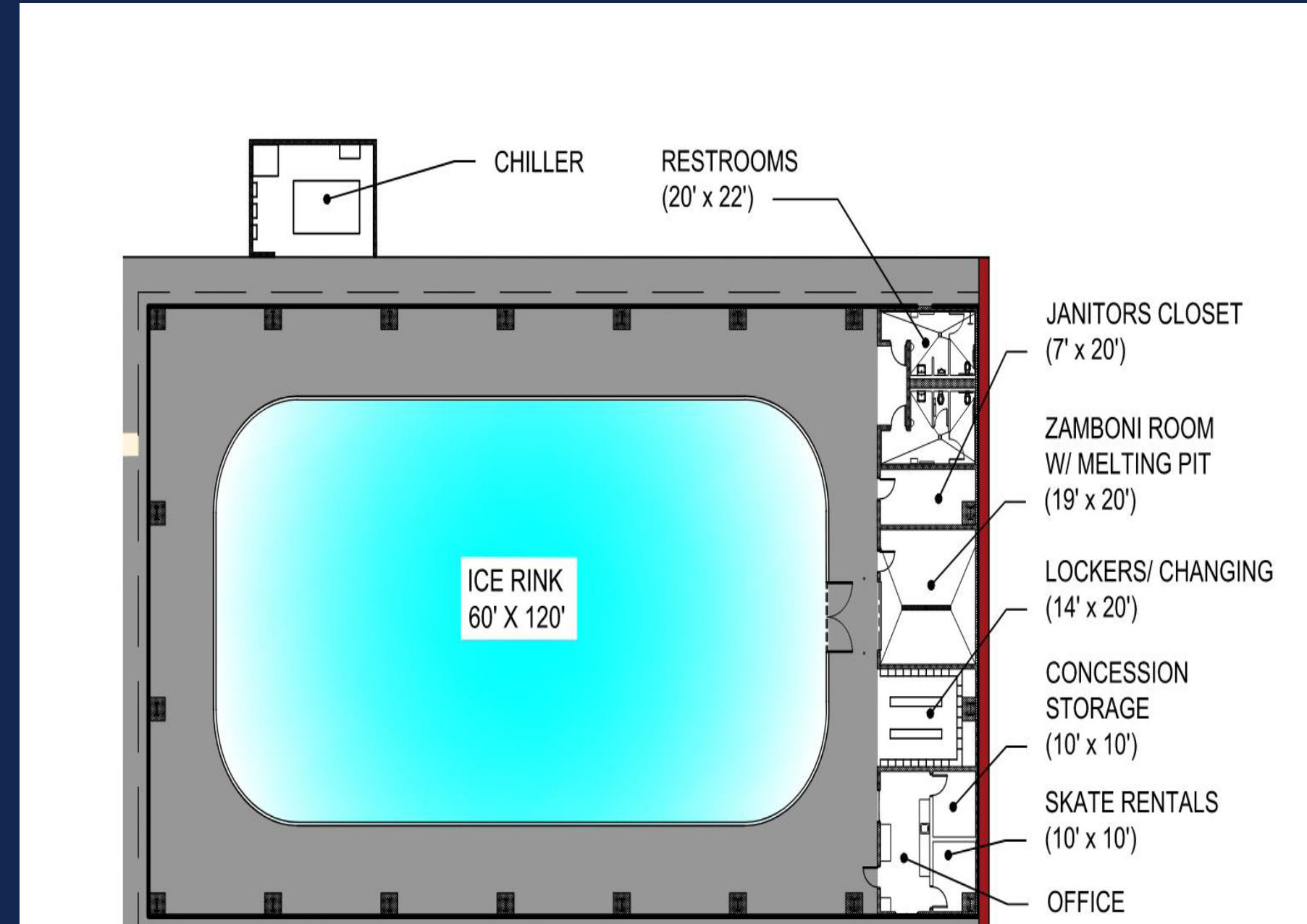
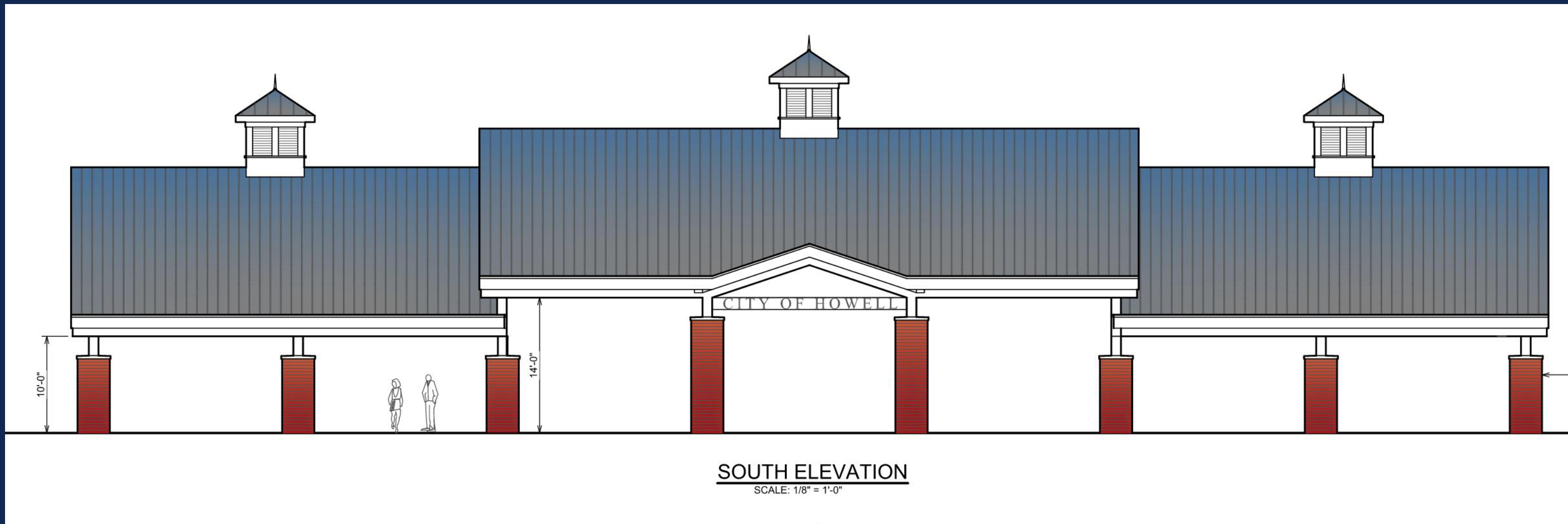


EXHIBIT B



Key differences between A and B:

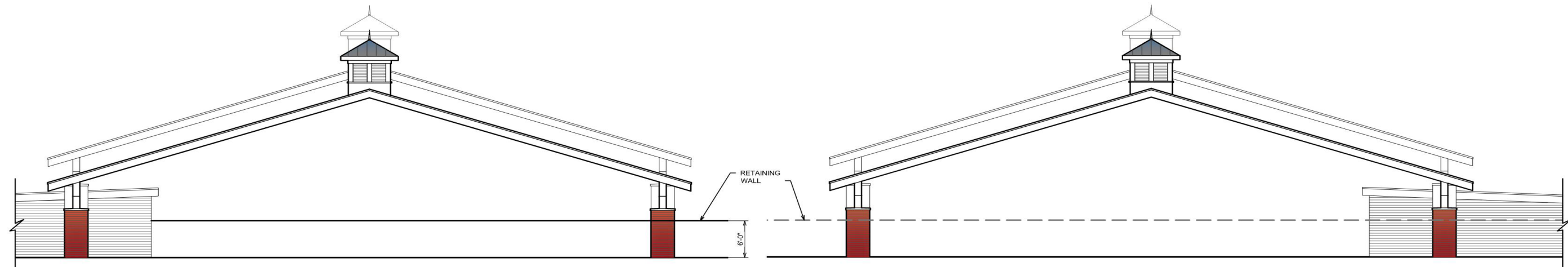
- 'A' has proposed warming room and rental area and 'B' does not have those amenities (rental area to provide additional revenue for City).
- Locker room and changing area larger in A (20'x20' vs 14'x20')
- Zamboni Room larger in A (23'x20' vs 19'x20')
- A view into pavilion from Howell Summit Garden would be blocked in 'B' due to buildings
- Office/Rental located adjacent to different parking lots
- 'B' has a larger area between parking lot and pavilion which allows for possible additional seating/gathering area



- Cross sectional view of the pavilion looking north from Depot parking lot
- Design particulars of pavilion (roofline style, color, lighting, etc.) are still a work in progress
- Style of pavilion to be chosen once location of amenities is decided

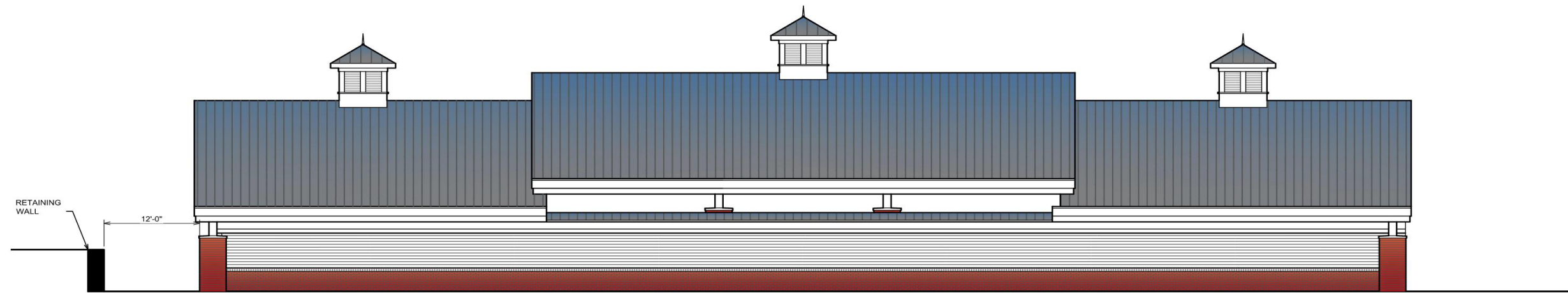


SOUTH ELEVATION
SCALE: 1/8" = 1'-0"



WEST ELEVATION
SCALE: 1/8" = 1'-0"

EAST ELEVATION
SCALE: 1/8" = 1'-0"



NORTH ELEVATION
SCALE: 1/8" = 1'-0"

- Elevational views of the pavilion from each direction
- South elevation shows the proposed buildings (office, restroom, Zamboni and warming room, etc.) in the background
- North elevation shows view from railroad tracks looking south)



- Example pavilion/ice rink from Sterling Heights and Valparaiso

Note Key

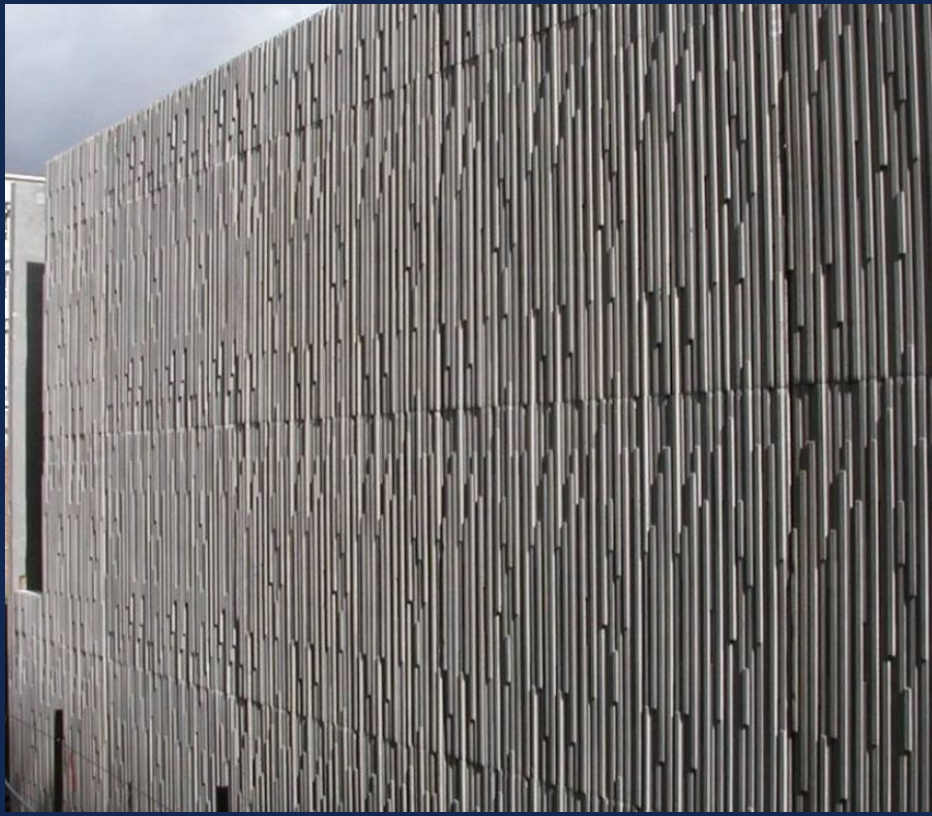
1. Pergola with table and chair sets beneath
2. Pergola with bench wall beneath
3. Fire Pit
4. Landscape bed with small multistem trees and bench wall
5. Landscape bed with small multistem trees
6. Curbed landscape bed
7. Water feature
8. New canopy trees
9. Existing tree
10. Hedge
11. Moveable planters
12. Wall with street art
13. Integrally colored concrete pavement with decorative scoring
14. Concrete sidewalk



- Design courtesy of Grissim, Metz Andriese and Associates
- Carry theme of the stage from the Howell Summit Garden into the public gathering area
- Key features include colored concrete, fire pit, landscape beds with raised seating around perimeter throughout area and a water feature







• QUESTIONS?

