



We stopped by!

As part of our ongoing effort to ensure the proper maintenance and function of stormwater drainage systems in our community, City of Duluth staff are conducting routine inspections of drainage easements in your neighborhood.

What is a drainage easement?

A drainage easement preserves a legal path for stormwater runoff through private property.



How does the City of Duluth know my property has a drainage easement?

It is a permanent feature of the property, and recorded on a final plat with the Clerk of the Superior Court.

Why is the city inspecting drainage easements?

Drainage easements are critical to flood management. Our goal is to help property owners identify their easement(s) and understand how to maintain them.



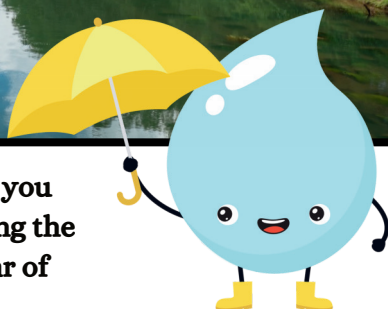
We completed an inspection of the drainage easement on your property today.



We were unable to access the drainage easement on your property today.



As the property owner, you are responsible for keeping the drainage easement clear of obstructions.



Drainage easements should be free of:

- Structures such as sheds, fences, playsets and pools
- Trash, yard debris and overgrown vegetation
- Anything else that can obstruct, block or alter the flow of water through the easement!



Restricted flow through a drainage easement can result in flooding and property damage.

LEARN MORE



Find more information, including multilingual resources, at:
www.duluthga.net/stormwater

Scan the QR code using your mobile device to go directly to our website!

Contact the Stormwater Department at:



sw@duluthga.net



770.497.5311