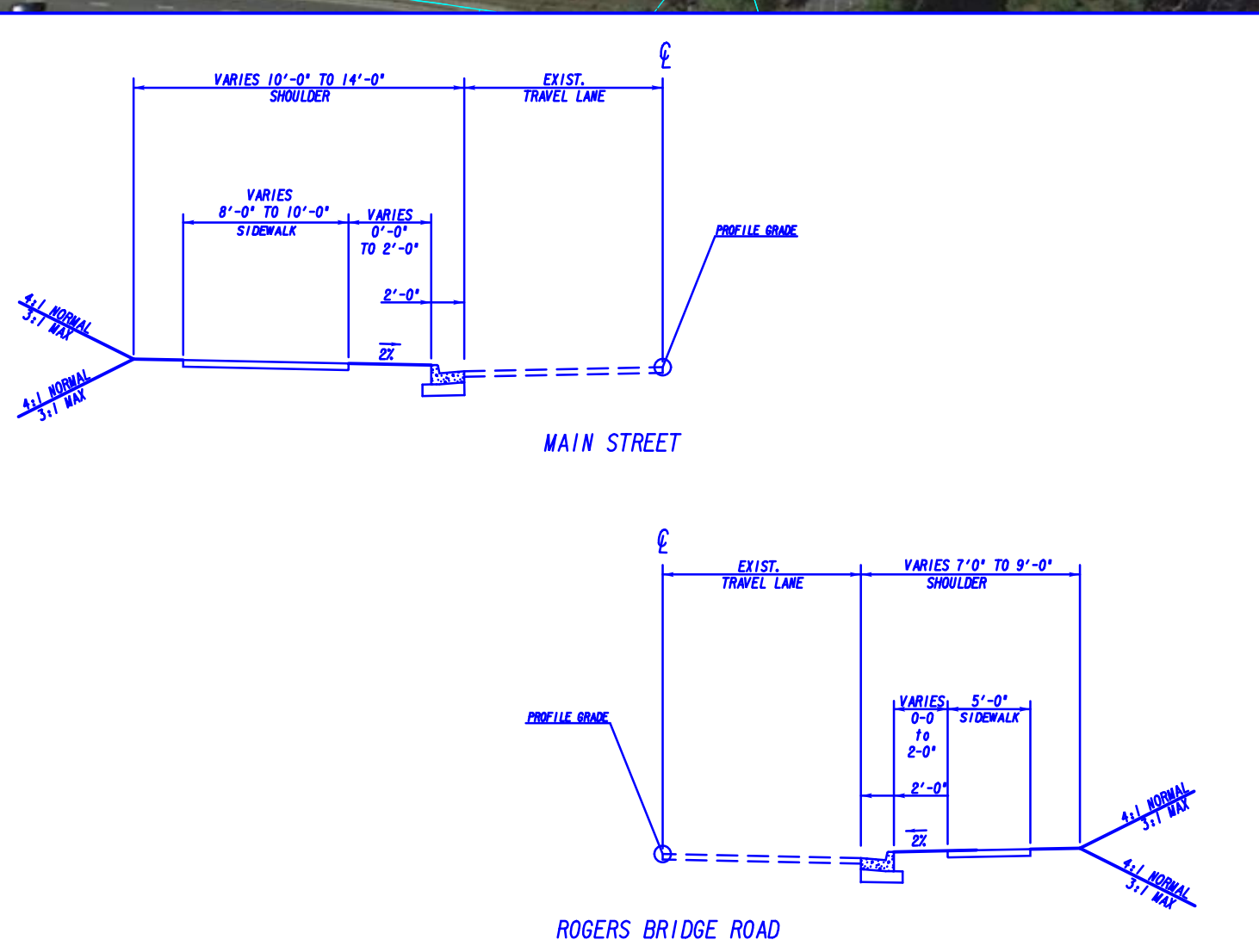
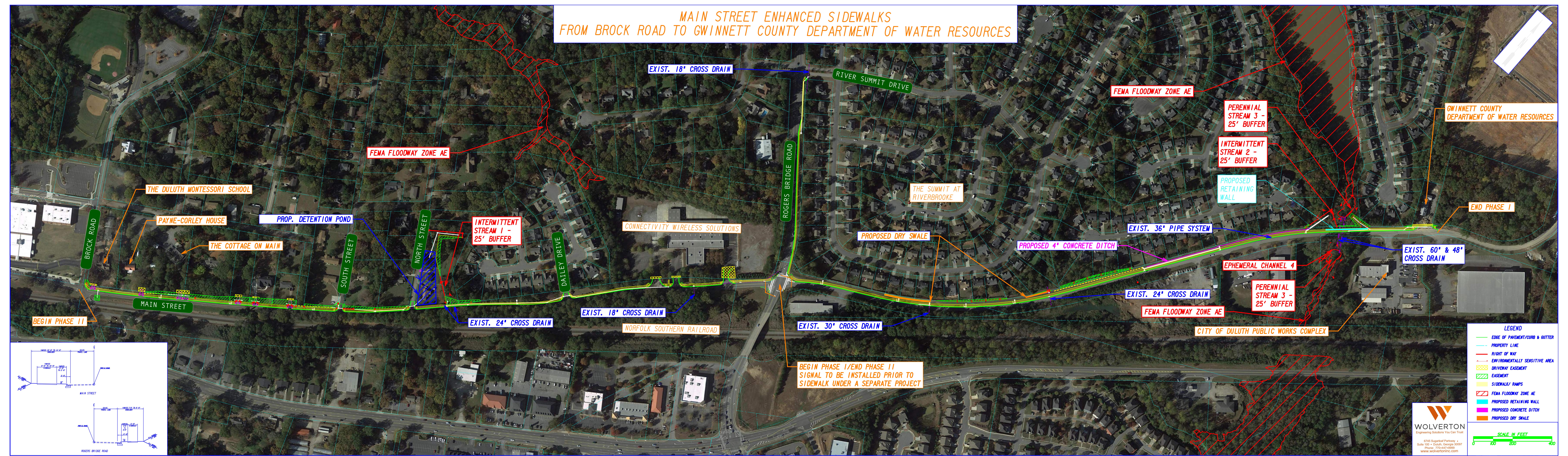


MAIN STREET ENHANCED SIDEWALKS  
FROM BROCK ROAD TO GWINNETT COUNTY DEPARTMENT OF WATER RESOURCES



**LEGEND**

- EDGE OF PAVEMENT/CURB & GUTTER
- PROPERTY LINE
- RIGHT OF WAY
- ENVIRONMENTALLY SENSITIVE AREA
- DRIVEWAY EASEMENT
- EASEMENT
- SIDEWALK/ RAMPS
- FEMA FLOODWAY ZONE AE
- PROPOSED RETAINING WALL
- PROPOSED CONCRETE DITCH
- PROPOSED DRY SWALE

**SCALE IN FEET**

0 100 200 400

**WOLVERTON**  
Engineering Solutions You Can Trust

6745 Sugarloaf Parkway • Suite 100 • Duluth, Georgia 30097  
Phone: 770.647.6500  
www.wolvertoninc.com