



Prepared for:

Mayor

Shirley Fanning-Lasseter

City Council

Marsha Anderson Bomar

Jim Dugan

Jim Hall

Doug Mundrick

Doris Kirouac

City Administrator

Phil McLemore

Recreation Department

Kathy Marelle, Director

Sharon Powell, Assistant to the Director

Recreation Advisory Board

Wanda Bennewitz, Chairperson

Paula Bender, Secretary

Billy Jones

Randy Marcus

Fred McCauley

Linda Strange

Matt Reeves

Matt Morris

Luke Livingston



TABLE OF CONTENTS

Introduction

Chapter 1 – Community Profile

Chapter 2 – Facilities and Program Inventory

Chapter 3 – Public Input

Chapter 4 – NRPA Standards

Chapter 5 – Recommendations and Park Master Plans

Appendices– Appendix A: Recreation Survey Results

Appendix B: Park and Greenway Cost Estimates



INTRODUCTION

Duluth is located approximately 25 miles northeast of Atlanta in Gwinnett County, Georgia. The Chattahoochee River runs along Duluth's northern border, and several major roadways, including Peachtree Industrial Boulevard, Buford Highway, Highway 120, and Pleasant Hill Road, dissect the City. Duluth has recently invested in the redevelopment of its town center, creating a large town green, new police station and new city hall. With these projects nearing completion, the City would like to make improvements to its parks and recreation system. The City of Duluth owns 6 parks, including: Roger's Bridge Park, Scott Hudgens Park, W.P. Jones Park, Taylor Memorial Park, Church Street Park, and Buntzen Road Park.

Duluth has experienced rapid population growth over the past 20 years, expanding to an estimated 2007 population of 27,000 people. Population projections indicate that Duluth and the surrounding areas will continue to grow as new residents move into the Atlanta Metropolitan Area. As the population increases, so does the demand for parks and recreational facilities. Parks and greenspace greatly enhance the quality of life within communities. Parks strengthen community ties, aid in youth development, enhance property values, and attract both residents and businesses to communities. This Recreation Master Plan provides a guide to ensure that the recreational needs of the growing population will be met over the next 10 years.

The City of Duluth Recreation Master Plan includes the following chapters:

Chapter 1: Community Profile. In this chapter, demographic information is analyzed to get an understanding of what type of community Duluth is today, and what it will be like in 10 years. The demographic information used in this report includes: population growth and density, racial diversity, age composition, and educational attainment.

Chapter 2: Facilities Inventory and Analysis. This chapter is an assessment of each of Duluth's six parks and includes: a written description of each park, a tabulation of facilities, an analysis of circulation patterns and facilities layout, and a description of general issues of concern.

Chapter 3: Public Input Process. Each element of the public process is described and summarized, including the public meetings, stakeholder interviews, steering committee meetings, and web based public survey.

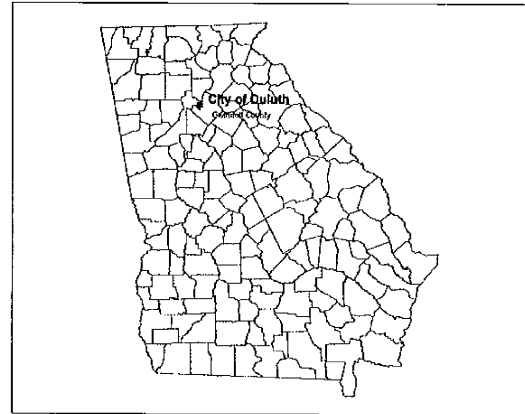
Chapter 4: NRPA Standards. Recreation standards established by the National Recreation and Parks Association (NRPA) are applied to demographic information to determine deficiencies and surpluses in Duluth's recreation system.

Chapter 5: Recommendations & Park Master Plans. Recommendations (based upon public input and NRPA standards) are made for the development of new parks, and the improvement of existing parks within Duluth.



COMMUNITY PROFILE

The community profile is an in-depth look at the demographics of the City of Duluth. Demographic information establishes what the population looks like today and what it will look in the future. This information provides insight into the amount of open space needed based upon population growth as well as insight into the types of recreation needed based on age distribution, household income, and ethnic diversity. The demographic trends used in this section are based upon the U.S. Census 2000 data.



Map 1-1.1 Duluth Location Map

Demographics

The City of Duluth is located in Gwinnett County, Georgia which is one of the fastest growing counties in the United States. As Metropolitan Atlanta expanded over the past decades, residents moved to the northern portion of Atlanta, which includes Duluth, in search of less congestion and more affordable land and housing.

The 2005 population in Duluth was approximately 24,482 people, and is expected to grow to 34,065 people by 2015. Duluth's greatest population change, a 145 percent increase, occurred between 1990 and 2000. It is most likely that Duluth has already experienced its greatest population percentage increase, however, it is expected that the raw rates of additional residents will hold steady at approximately 5,000 new residents every five years for the next 10 years. This rate of growth is higher than both Gwinnett County and the State of Georgia. Tables 1.1 and 1.2 illustrate how populations are projected to grow within Duluth and the region.

Table 1.1 Population Projections 1990-2015, Census Place and County

Division/County	1990	1995	2000	2005	2010	2015
Duluth	9,029	15,576	22,122	24,482	29,274*	34,065*
Gwinnett County	352,910	470,679	588,448	693,834	799,221	904,607
Georgia	6,478,216	7,332,335	8,186,453	8,868,675	9,550,897	10,233,118

Source: Georgia Department of Community Affairs (DCA), U.S. Bureau of Census, *HDR Interpolation.

Table 1.2 Projected Population Change (%) By Census Place and County

Location	1990-1995	1995-2000	2000-2005	2005-2010	2010-2015	2015-2020
Duluth	72.5%	42.0%	10.7%	19.6%	16.4%	14.1%
Gwinnett County	33.4%	25.0%	17.9%	15.2%	13.2%	11.6%
Georgia	13.2%	11.6%	8.3%	7.7%	7.1%	6.7%

Source: U.S. Census Bureau 2000, HDR Interpolation



Population densities are also projected to increase over the next 15 years as populations grow and the amount of land within Duluth remains relatively constant. The projections in Table 1.3 indicate a significant (70%) increase in density between 2005 and 2015.

Table 1.3 Density Projections by Census Place and County (Persons per Acre)

Place/County	2000	2005	2010	2015	2020
Duluth	3.95	4.37	5.22	6.08	6.93
Gwinnett County	2.13	2.51	2.89	3.27	3.65
Georgia	0.22	0.25	0.26	0.28	0.30

Source: ARC 2007, U.S. Census Bureau 2000, Interpolation by HDR

The 2000 census data, as indicated in Table 1.4, indicates that the majority of persons in Duluth are white, with Asian persons comprising the largest minority, and Black/African American persons the second largest minority. The large Asian population is a unique aspect of Duluth's demographics; the Asian population percentage is nearly twice that of Gwinnett County and more than six times that of the State of Georgia. In general, non-whites comprised 31 percent of the total population in Duluth, and persons of Hispanic Origin comprised nine percent of the total population.

Table 1.4 Population by Race and Hispanic Origin by Census Place and County, 2000

Location	White	Black / African American	American Indian/ Alaska native	Asian	Pacific Islander/ native Hawaiian	Hispanic / Latino	Another Race	Two or More Races
Duluth (#)	15,186	2,623	73	2,851	9	2,002	847	533
Duluth (%)	68.6	11.9	0.3	12.9	0.0	9.0	3.8	2.4
Gwinnett County (%)	72.7	13.3	0.3	7.2	0	10.9	4.3	2.2
Georgia (%)	65.1	28.7	0.3	2.1	0.1	5.3	2.4	1.4
United States (%)	75.1	12.3	0.9	3.6	0.1	12.5	5.5	2.4

Source: U.S. Census Bureau 2000

The City of Duluth and Gwinnett County have similar median household incomes; both are significantly higher than the State of Georgia. In 1999, approximately 51% of the population of Duluth had a household income between \$50,000 and \$124,999. Table 1.5 provides the breakdown of the population by household income in 1999 for Duluth and the region.

Table 1.5 Household Income, 1999

Age	Duluth %	Gwinnett %	Georgia %
Less than \$10,000	2.0%	3.2%	10.1%
\$10,000 to \$14,999	1.7%	2.4%	5.9%
\$15,000 to \$19,999	3.2%	2.9%	5.9%
\$20,000 to \$24,999	4.0%	4.1%	6.4%
\$25,000 to \$29,999	3.3%	4.4%	6.4%
\$30,000 to \$34,999	6.7%	5.2%	6.2%
\$35,000 to \$39,999	6.9%	5.5%	5.9%



\$40,000 to \$44,999	4.6%	5.9%	5.8%
\$45,000 to \$49,999	5.6%	5.2%	5.1%
\$50,000 to \$59,999	11.9%	10.5%	9.2%
\$60,000 to \$74,999	13.9%	14.0%	10.5%
\$75,000 to \$99,999	15.3%	16.8%	10.4%
\$100,000 to \$124,999	9.5%	9.2%	5.2%
\$125,000 to \$149,999	5.2%	4.5%	2.5%
\$150,000 to \$199,999	4.1%	3.5%	2.2%
\$200,000 or more	2.2%	2.5%	2.4%

The age of the population within Duluth is fairly similar to that of Gwinnett County and the State of Georgia. Small differences include a larger percentage of people in the 30 to 34 year age group and a smaller percentage of people in the 55 to 75 year old age group. It is expected that, as with the population of the nation, the proportion of children will continue decreasing and the proportion of persons age 45 and older will increase. Table 1.6 examines the age composition of the population of Duluth, Gwinnett County and the State of Georgia

Table 1.6 Age of Population, 2000

Age	Duluth %	Gwinnett %	Georgia %
Under 5 years	7.59%	8.00%	7.27%
5 to 9 years	6.95%	8.02%	7.52%
10 to 14 years	6.29%	7.76%	7.42%
15 to 19 years	6.14%	6.87%	7.28%
20 to 24 years	6.38%	6.22%	7.23%
25 to 29 years	9.96%	8.36%	7.84%
30 to 34 years	11.22%	9.43%	8.03%
35 to 39 years	10.90%	10.36%	8.54%
40 to 44 years	9.71%	9.30%	8.00%
45 to 49 years	7.70%	7.61%	7.00%
50 to 54 years	6.24%	6.20%	6.19%
55 to 59 years	3.80%	4.01%	4.59%
60 to 64 years	2.21%	2.48%	3.49%
65 to 69 years	1.61%	1.82%	2.89%
70 to 74 years	1.38%	1.40%	2.43%
75 to 79 years	0.94%	1.03%	1.92%
80 to 84 years	0.48%	0.64%	1.27%
85 to 89 years	0.35%	0.32%	0.71%
90 years and over	0.14%	0.17%	0.36%

Source: U.S. Census Bureau 2000

The majority of Duluth residents have a high level of educational attainment as shown in Table 1.7. In 2000, nearly 77% of the population had at least achieved a college/associate degree or higher and 93% of the population had received a high school diploma (or equivalent).



Table 1.7 Duluth Educational Attainment – Persons Age 25 and Older, 2000

Elementary	High School		College	
Less than 9th Grade	9th to 12th Grade (No diploma)	H.S. Graduate (includes Equivalency)	Some College/ Associate Degree	Bachelor's/ Graduate /Professional Degree
314	705	2,356	4,444	6762
2.2%	4.8%	16.2%	30.5%	46.4%

Source: U. S. Census Bureau 2000.

Community Profile Conclusion

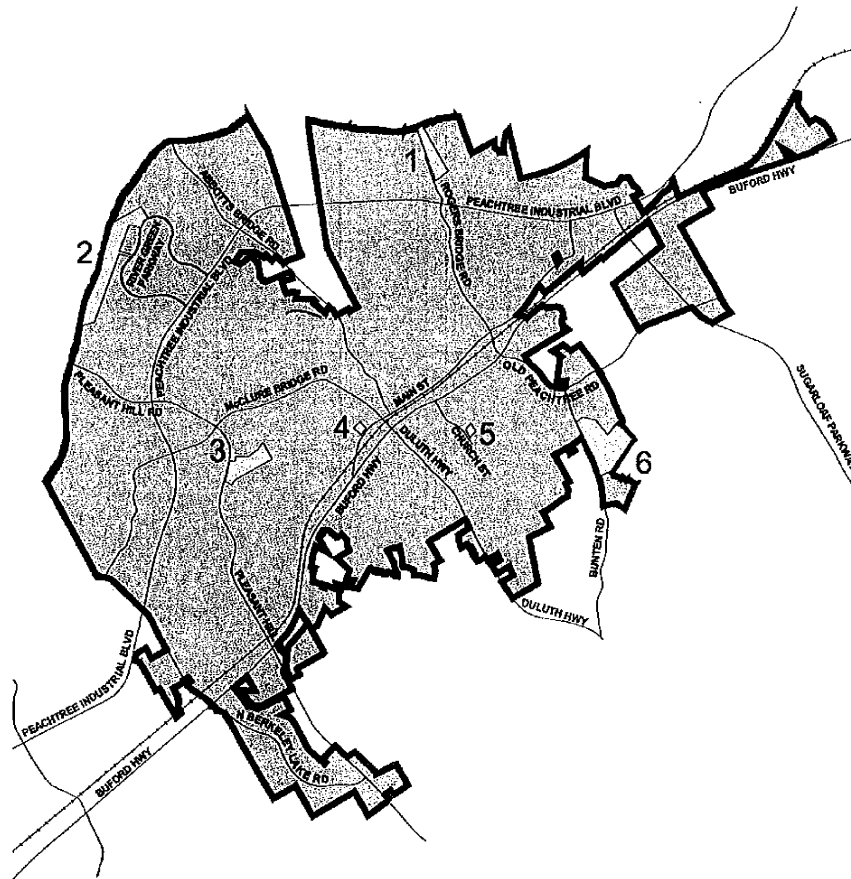
Demographic trends are critical in determining the future needs of Duluth. The most important of these trends is population growth because it relates directly to the overall demand for facilities. The national standards for quantities of park land and recreation facilities, which are addressed in Chapter Four, are based upon these population projections. Population projections indicate that Duluth's population will grow and become more dense over the next fifteen years. This increase in population will lead to an increase in the need for additional recreational facilities. The population density projections point to another potential issue for Duluth: land acquisition. Land acquisition will become increasingly difficult as the populations become more dense and the availability of large tracts of open land suitable for park space diminishes.

While population growth trends relate to quantities of facilities needed, demographic trends related to age, income, and race, relate to the types of facilities that are needed. The population of Duluth is projected to get older over the next 10 years as the baby boomer population ages. According to Georgia's State Comprehensive Outdoor Recreation Plan 2003-2007, aging populations need more passive recreation opportunities, such as fishing, boating, picnicking, and individualized fitness activities. Therefore the demand for passive recreation facilities is expected to increase over the next 10 years. In addition to growing older, Duluth residents have achieved a relatively high level of education and household income. Persons with higher income levels have the option of using private facilities and participating in activities that require more expensive equipment, while persons of lower income levels are more dependent upon public recreational opportunities.



FACILITIES INVENTORY

This chapter is an evaluation of existing site conditions within each of the city's six parks (Roger's Bridge Park, Scott Hudgens Park, W.P. Jones Park, Taylor Memorial Park, Church Street Park, and Bunten Road Park). The facility inventory includes a narrative description of each park, quantities of existing facilities, and a site analysis drawing. This chapter also includes written inventories of greenways planned within the city limits, Gwinnett County parks, and Chattahoochee River National Recreation Area land within 2 miles of the city. These inventories will be compiled and used in the needs assessment to determine if Duluth is deficient in specific facilities. These inventories will also serve as base maps from which the individual master plans will be developed.



Map 2.1 Duluth City Parks

- | | |
|------------------------|-------------------------|
| 1. Roger's Bridge Park | 4. Taylor Memorial Park |
| 2. Scott Hudgens Park | 5. Church Street Park |
| 3. W.P. Jones Park | 6. Bunten Road Park |



ROGERS BRIDGE PARK

Roger's Bridge Park is a 12.75 acre park located in the northeastern quadrant of Duluth, a few blocks north of Peachtree Industrial Boulevard on Rogers Bridge Road (a Gwinnett County Road). Surrounding properties include an adjacent private event facility, a sand dredging facility, and single family residential neighborhoods. The private event facility includes large open spaces, a volleyball court, a small multi-use building, and a boat ramp; a city easement provides public access to the boat ramp. Connections to the surrounding residential developments should be improved to take advantage of this large user group.

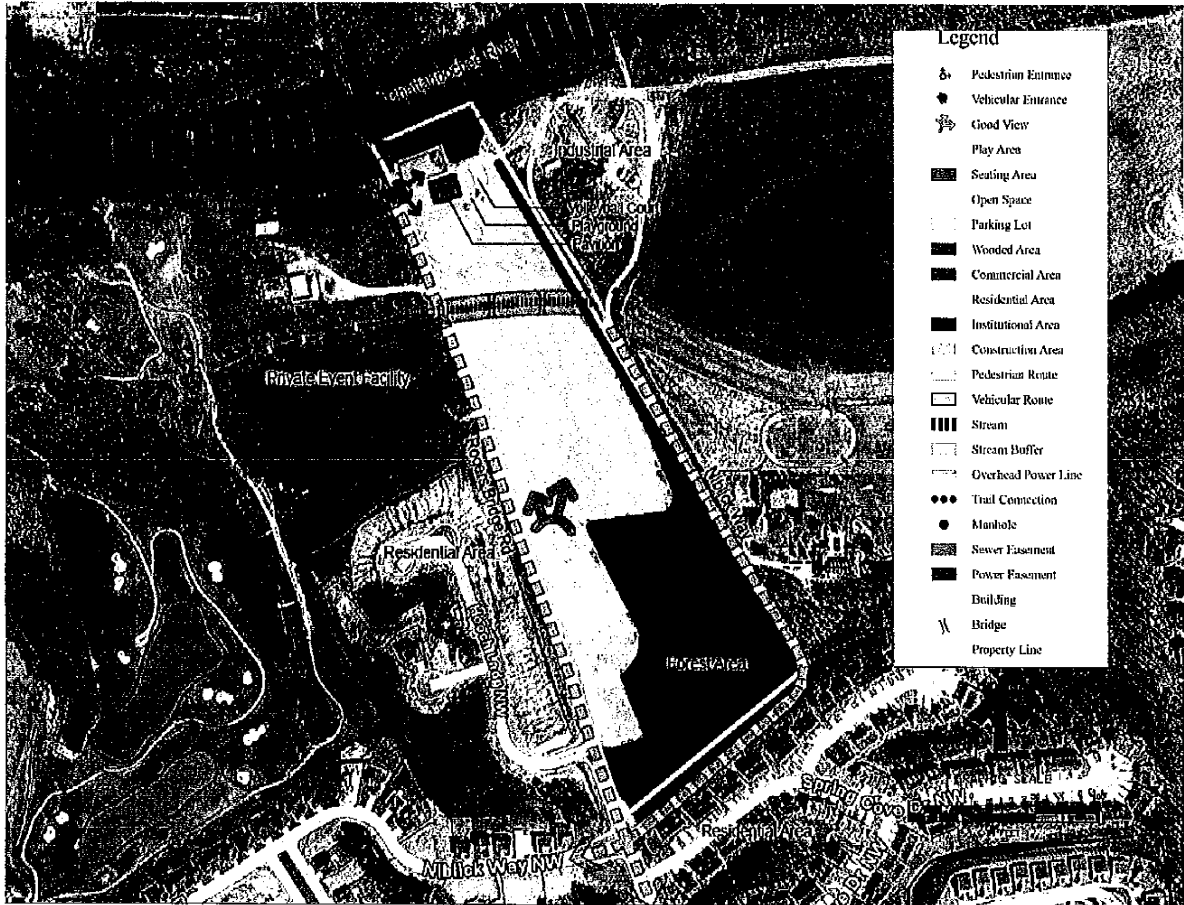
The Chattahoochee River flows along the northern boundary of the park. The river, masked by dense vegetation and inaccessible to most visitors, is an unused resource for the park. The Chattahoochee's floodplain covers the majority of the park with the exception of the southern end of the site, and a small area around the existing pavilion and parking lot. Buffers along the river include a 50 foot undisturbed vegetative buffer and a 150 foot pervious surface buffer. Additional restrictions placed on land within the Chattahoochee's floodplain include a 30% maximum land disturbance, a 15% maximum impervious surface coverage, no additional fill, and no structures that significantly impede the flow of natural flood waters. The river offers much potential for recreation; however, the restrictions associated with buffers and floodplain limit the amount and types of development that can occur on the site.

Approximately two-thirds of the park is an open grassy field with small wooded areas along the stream buffer and at the southern end of the park. A gravel parking lot, picnic pavilion, playground, and volleyball court are the only recreational amenities in the park. The remains of a historic steel bridge (Rogers Bridge) span the Chattahoochee River. Although the bridge is in disrepair, the structure is sound and there are conceptual plans to restore the bridge for bike/pedestrian purposes.

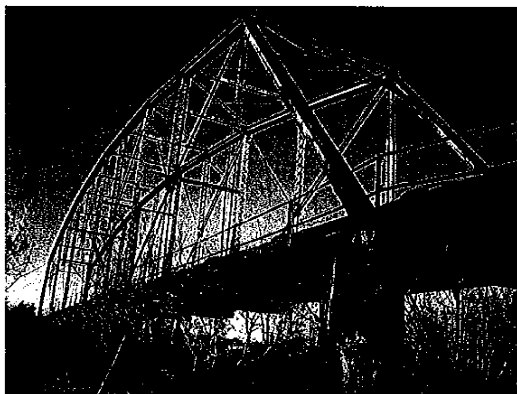
The park sits at a strategic location, adjacent to the river and at the intersection of several planned, but not constructed, multi-use trails. The trails include the Western Gwinnett Bikeway along Peachtree Industrial Boulevard, The Rogers Bridge Trail along Rogers Bridge Road and the Chattahoochee River Greenway which follows the river along the city's northern boundary. Rogers Bridge Park should be developed to take advantage these connections, possibly serving as a trail head for several different greenways.

Table 2.2 Roger's Bridge Park Inventory

#	Inventory of Facility
1	Pavilion (3,100 SF)
1	Sand Volleyball Court
1	Playground
15 space	Gravel Parking Lot
10	Picnic Tables



Rogers Bridge Park Site Analysis



Rogers Bridge



Playground at Rogers Bridge Park



SCOTT HUDGENS PARK

Scott Hudgens Park is a 40 acre park located in the northwestern quadrant of Duluth on River Green Parkway, just west of Peachtree Industrial Boulevard. The park sits within the River Green Office Park; adjacent land uses include a school, office, and Chattahoochee River National Recreational Area (CRNRA) park land. Scott Hudgens Park is owned Georgia DNR, but is leased to the City of Duluth, and is managed and maintained by the Atlanta Fire United Soccer Association. The park land was donated to the city with the stipulation that it be used for soccer. The park is heavily used on weekends, with an estimated 3000 people visiting each day. Besides soccer, the park is used for the city fire works display on the Fourth of July, and for high school cross country meets.

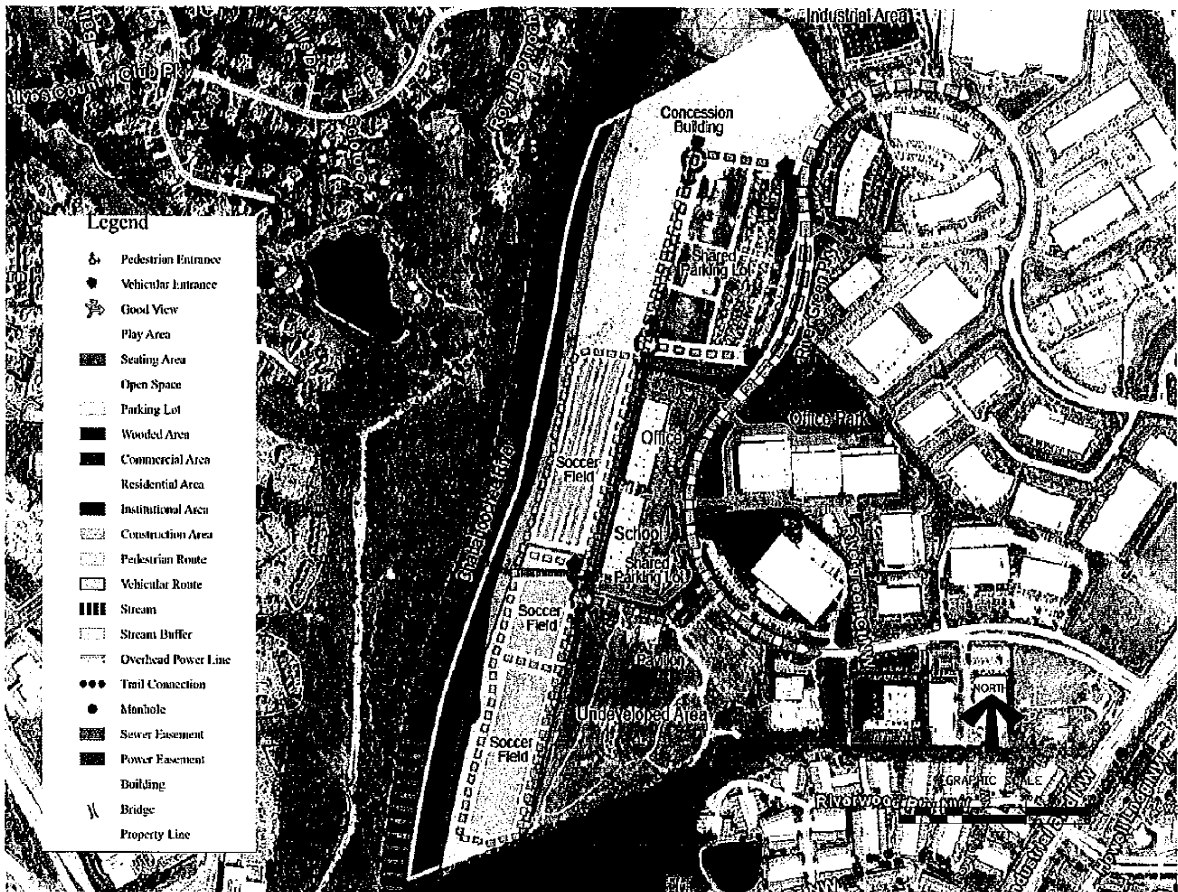
The park is a long narrow parcel, bounded on the west by the Chattahoochee River. The majority of the site sits within the Chattahoochee River floodplain. A small stream cuts across the park, separating the game fields from the practice fields. The restrictions placed upon land adjacent to the Chattahoochee River limit the development potential within the park (see the Rogers Bridge Inventory for a description of the restrictions). There are no trees on the site, with the exception of the stream buffer areas.

The park consists of 4 graded and irrigated soccer fields, and approximately 13.5 acres of informal fields. A narrow road runs along the edge of the fields providing two way vehicular/pedestrian circulation across the eastern edge of the park. Parking for Scott Hudgens is unorganized and poorly located. A large grassy parking area at the northern end of the park provides the majority of the parking; however it is inconveniently located at the end of the park furthest from the game fields. The city does not own this parcel, but has an agreement with the owner, the AT&T Golf Classic, to use the parcel. Parking along the park road creates traffic issues and potential vehicle/pedestrian conflicts. A maintenance area is located adjacent to the practice fields, and one concession stand is located at the north end of the site. The site contains no permanent restrooms, permanent light fixtures, or pedestrian walkways.

While the park facilities for the athletes are good, the conditions for spectators are poor. The park's spectators would benefit greatly from the addition of permanent restrooms, additional concession facilities, sidewalks, shade, and playgrounds for siblings. Although Scott Hudgens is lacking these amenities, a first rate soccer program is being run at the park, which attracts a lot of visitors. The site holds a lot of potential with connections to the river, areas for expansion, and connections to the adjacent CRNRA property.

Table 2.3 Scott Hudgens Park Inventory

#	Inventory of Facility
4	Soccer Fields (U-19)
2	Pavilion
800 space	Grassy Parking Lot Shared with AT&T Golf Classic
200 space	Parallel on Roadway Parking



Scott Hudgens Park Site Analysis



Scott Hudgens Park Road



Soccer Field at Scott Hudgens Park



W.P. JONES PARK

W.P. Jones Park is a 20.6 acre site located on Pleasant Hill Road in the southwestern quadrant of the city. Surrounding land uses include residential developments, office developments, and the public library. Connections to the surrounding properties should be improved to maximize usage. The connection to the library is a particularly important connection, providing the opportunity for shared uses and activities.

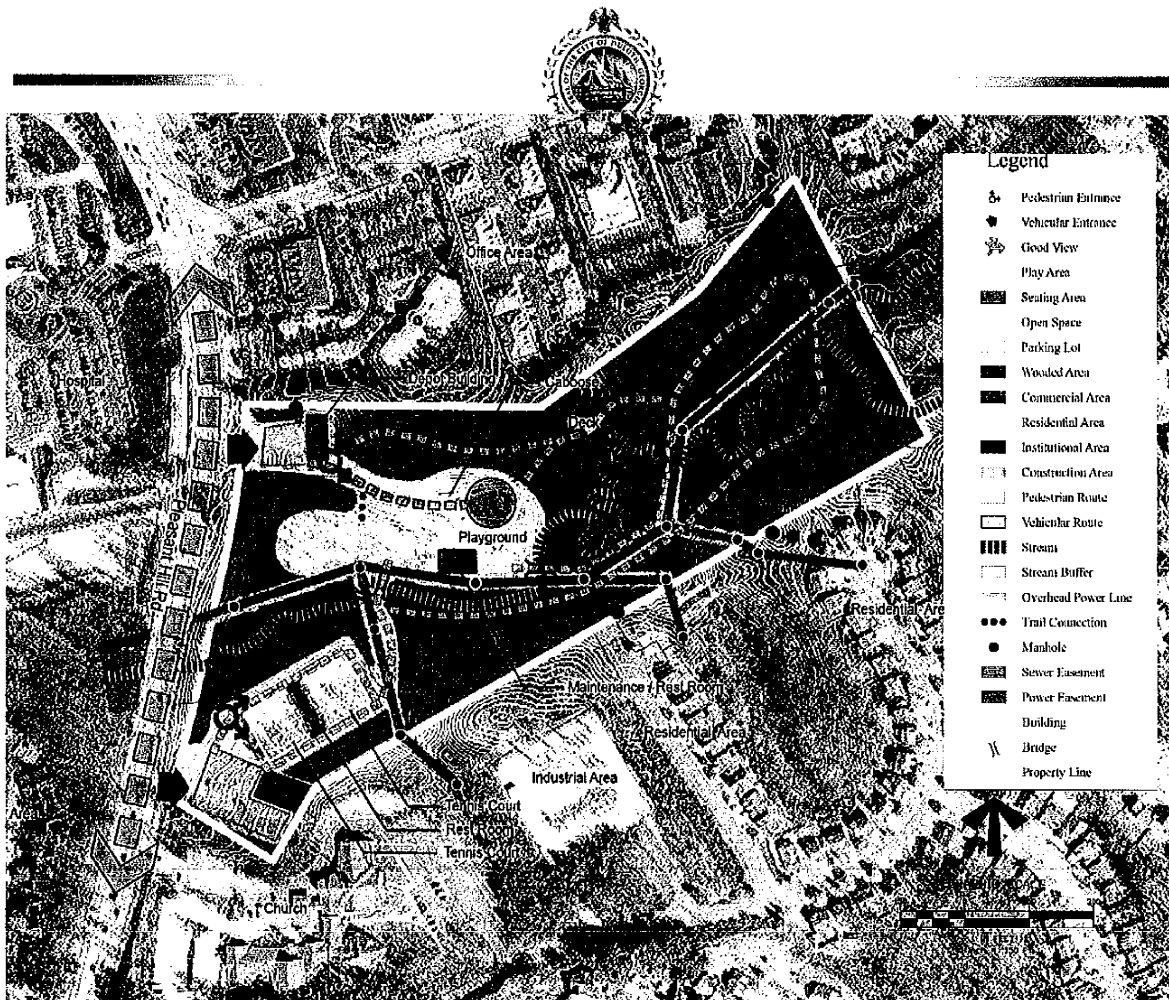
Although the site sits on busy Pleasant Hill Road, the park is quiet and heavily wooded. A small stream, which runs east to west, divides the park in two. The stream is in poor condition with highly eroded stream banks. Three natural plant communities occur within the park, including a riparian zone along the stream, a floodplain forest, and an upland forest. The majority of the park's amenities are located in the flat area within the stream's floodplain.

The park has two separate entrances located on Pleasant Hill Road. The southern entrance leads to a small parking lot serving a small tennis facility. The tennis facility includes two sets of two courts which surround a restroom/storage building. The tennis facility is new and in excellent condition. The northern half of the site includes a community center, playground equipment, a picnic shelter, restroom facility, and soft surface trails. The community center is a former train depot which is planned to be relocated and replaced.

The park as a whole is in good condition. The natural beauty of the site, which includes mature vegetation, a meandering stream, and varied topography, is a huge asset for the park. Future development within the park should be concentrated in the western end of the park to preserve the natural eastern half of the site. Potential areas for improvement within the park include: additional parking, improved connections to surrounding neighborhoods, and stream bank restoration.

Table 2.4 W.P. Jones Park Inventory

#	Type
2	Pavilion
18	Picnic Tables
1 mile	Dirt Trails
1	Creek Overlook Deck
1	Playground (5,800 SF)
4	Tennis Courts
1	Caboose Renovated as Play Structure
1	Community Center that is a former Train Depot (3,500 SF)
2	Restrooms/ Concession building
25 space	Parking Lot at Community Center
56 space	Parking Lot at Tennis Facility
3	Pedestrian Bridges



W.P. Jones Park Site Analysis



Restroom and Playground



Tennis Facility



TAYLOR MEMORIAL PARK

Taylor Memorial Park is a 2.4 acre park site within the Duluth Town Green, located in the center of Duluth. The Town Green is a public greenspace surrounded by a mixture of residential, commercial, and civic buildings. The Town Green is a recent addition to Duluth, with portions of the development still under construction.

Taylor Memorial Park is currently a space with no recreational amenities. A playground structure once sat on the site, but was removed during the construction of the new City Hall, which is scheduled for completion in 2007. Taylor Park is programmed for a playground.

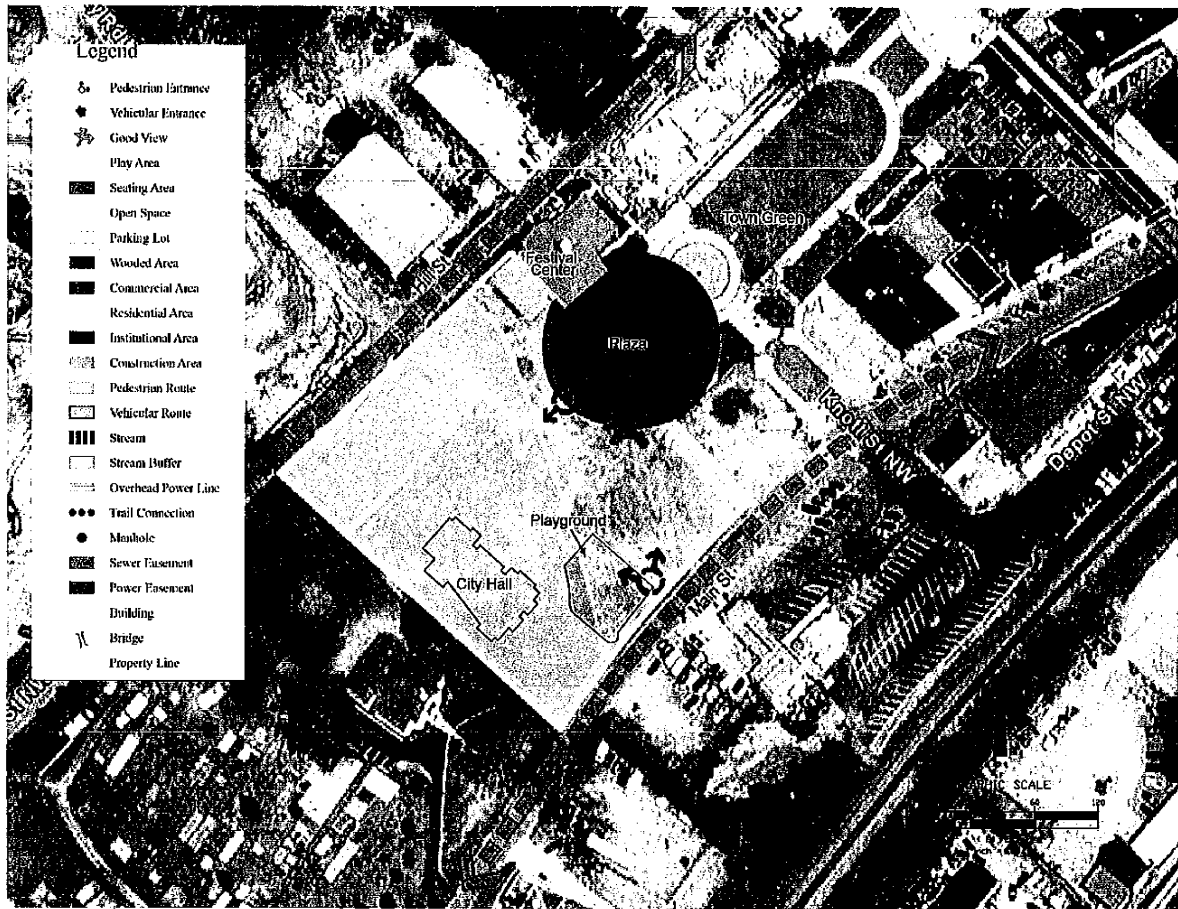
The playground site sits on the front right side of the new City Hall, and overlooks the Festival Center, a venue for outdoor performances. The park is accessible from the Duluth Town Green, or from a formal brick stair entrance on Main Street. Parking for Taylor Memorial Park is located on Main Street.

The park site is in a scenic location, sitting among an allee of mature trees on a grassy hillside. The trees provide a lot of shade for the site and should remain undisturbed. It is critical to minimize grading activities near the trees to prevent damage to the root system. Plans requiring excavation and excessive fill should be avoided.

This highly visible location in front of a City Hall provides both a challenge and opportunity for creative design. The playground should provide interesting play opportunities, relate to the formal location, but not distract from the City Hall.

Table 2.5 Taylor Memorial Park Inventory

#	Inventory of Facility
2.4 acres	Open Space



Taylor Memorial Park Site Analysis



Park Future Playground Location



Entrance to Taylor



CHURCH STREET PARK

Church Street Park is a 1.7 acre park located in the Southeastern quadrant of Duluth, a few blocks south of Buford Highway on Church Street. Church Street Park is on a dead end road with little vehicular traffic. The park is in close proximity to two churches within a low income residential neighborhood. The park was developed in the mid 1990's.

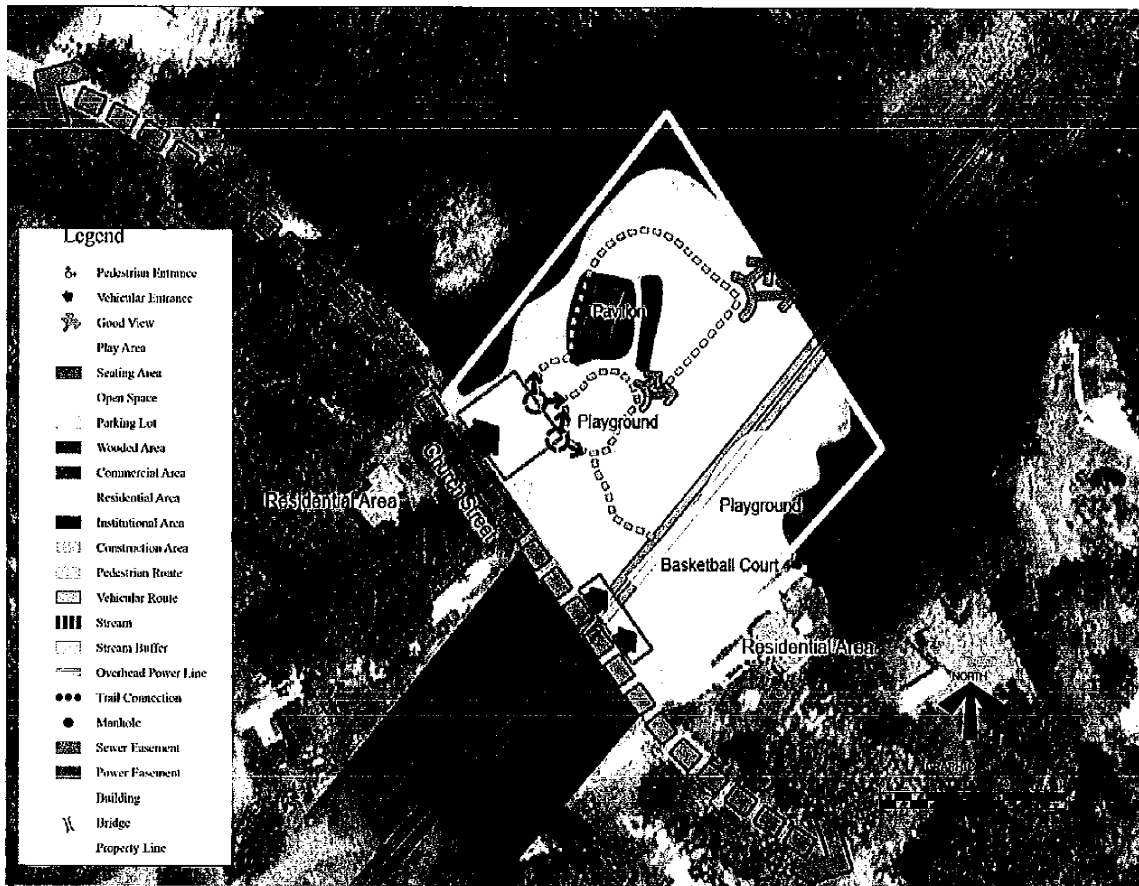
Church Street Park's topography is challenging due to steep slopes and few flat areas. The park has very few trees, and is somewhat of a barren environment. A large transmission line power easement crosses through the middle of the site, limiting the amount of trees that can be planted.

The park consists of a pavilion, playground, and a 10 space parking lot at the northwestern end of the park. The southeastern end of the park includes a basketball court, swing-set, and several perpendicular, on-street parking spaces. The park facilities appear to be in good condition with the exception of the parking lot, which needs improvement.

The park has several limitations that influence park layout and design; these include the power easement, steep topography, and vandalism issues. Although these issues limit design, a reorganization of site elements would greatly improve the function of the park.

Table 2.6 Church Street Park Inventory

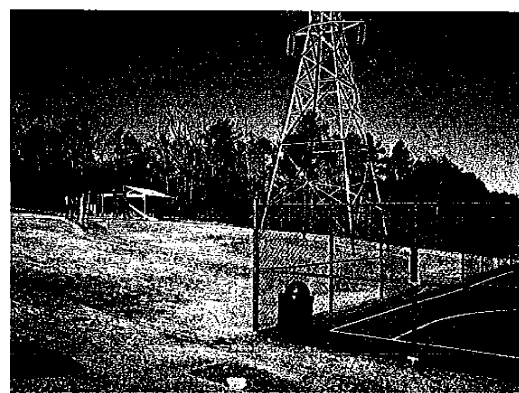
#	Inventory of Facility
1	Pavilion (700 SF).
1	Playground (1,750 SF)
1	Basketball Court
8 space	Off Street Parking Lot
8 space	On Street Parking
1	Picnic area (3 tables / 2 grills)



Church Street Park Site Analysis



Pavilion and Playground



Basketball Court and Power Lines



BUNTEN ROAD PARK

Bunten Road Park is a 45 acre community park located in the southeast quadrant of the city. The park is located on Bunten Road between Old Peachtree Road and Duluth Highway, about a block away from M.H. Mason Elementary School. Single family residential developments surround the park.

This park offers a mixture of passive and active recreation opportunities including baseball, soccer, tennis, playgrounds, walking trails, and a recreation center. The park's various amenities are laid out in a logical manner, exemplifying the value of a master plan. The park's abundance of recreation opportunities and well maintained facilities attract a lot of visitors to the park.

The park's circulation includes a single entrance off of Bunten Road which leads to a looping park road. The road provides access to the various parking lots which are placed in close proximity to the various facilities. Pedestrian circulation includes a variety of trails that wind through the park. The central trail is a 10' wide asphalt trail which passes next to the active fields as well as through the wooded section of the park. Smaller, unpaved paths meander through portions of the wooded area. The trails offer a varied experience for park visitors.

The active sports facilities take up the majority of the space in the park. The baseball fields are located in pairs, with a concession building for each pair of fields. One soccer field is located in the northwestern corner of the site, and another soccer field is centrally located, adjacent to the community center. A tennis facility, with 4 courts, sits in the northern end of the park, adjacent to a maintenance facility.

The 36,000 square foot community center has an indoor gym, office space, meeting rooms, and aerobics rooms. Duluth's recreation department headquarters are located at the community center. The community center is heavily used, hosting events for all ages including young children and senior citizens.

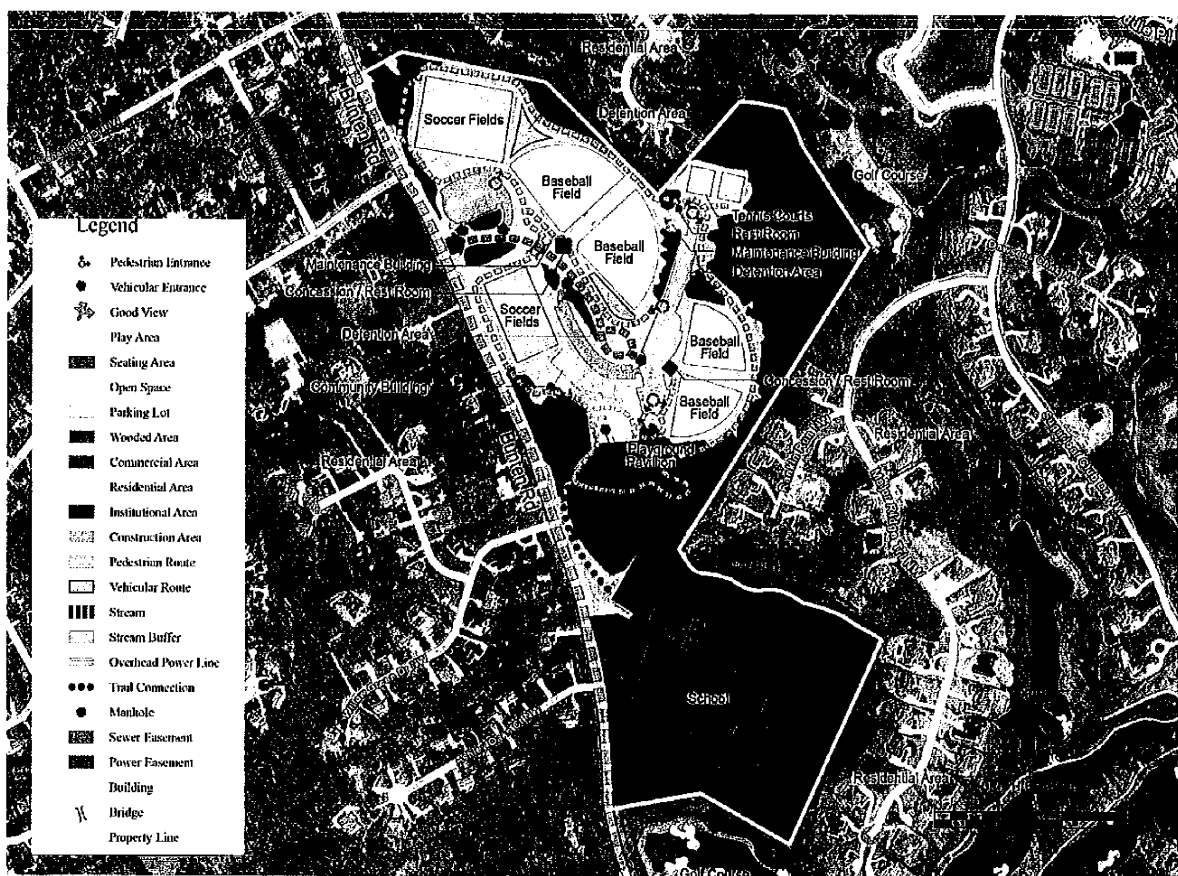
Bunten Road is the only one of Duluth's parks that was built with a master plan; it is in good condition and will not be re-master planned as part of this report. However, the facilities within Bunten Road will be factored in to the needs assessment.

Table 2.7 Bunten Road Park Inventory

#	Inventory of Facility
1	Community Building (36,000 SF)
1	Playground (3,600 SF)
2	Soccer Fields
2	Adult Baseball Fields
2	Little League Baseball Fields
1	Football Field
4	Tennis Courts
1.08 mile	Asphalt Bike and Walking Path



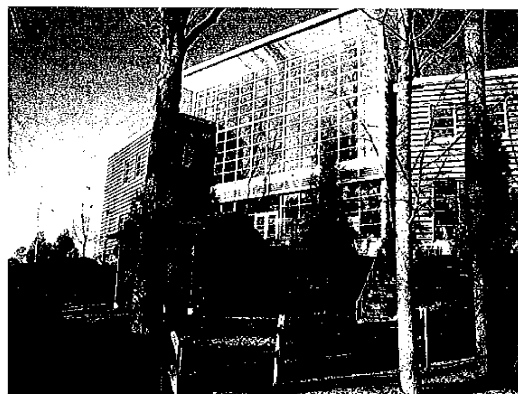
2	Restroom / Concession Facilities
400 space	Parking Lot



Bunten Road Park Site Analysis



Baseball Fields and Trail



Community Building



GREENWAYS

Several greenway trails are in various stages of development within Duluth, although none have been constructed. The Western Gwinnett Bikeway is a planned 8' to 12' paved multi-use trail that follows the right-of way of Peachtree Industrial Boulevard from Rogers Bridge Road to North Berkeley Lake Road (approximately 4 miles), where it connects with the Gwinnett County portion of the trail that extends to Pinckneyville Park. The bikeway will pass less than a quarter of a mile from Rogers Bridge Park. Portions of this trail, beginning at Rogers Bridge Road, are to begin in 2008.

The Rogers Bridge Trail is a 10' to 12' multi-jurisdictional trail that involves Duluth, Gwinnett County, and Fulton County. The Duluth portion of the trail will begin at the Western Gwinnett Bikeway on Peachtree Industrial, continue down Rogers Bridge Road for approximately one half of a mile, and terminate at the bridge over the Chattahoochee. This trail will play a key role in the development of Rogers Bridge Park. The City has received grants for the construction of this trail. Fulton County has completed their portion of the trail that begins on the other side of the bridge and continues to McGinnis Ferry Road. The restoration of Rogers Bridge (owned by Gwinnett County) will be necessary to complete the connection.

The City of Duluth developed a master plan for a 3.5 mile greenway along the Chattahoochee River from the Suwannee Creek Unit of the CRNRA at the city's northeastern border to the CRNRA's Abbotts Bridge Unit off of Abbotts Bridge Road (Highway 120). This greenway also connects Rogers Bridge Park and Scott Hudgens Park. A trail head development at Rogers Bridge Park will provide facilities for both the River greenway and the Rogers Bridge Trail. Buffer restrictions make it very complicated to create a paved multi-use trail along the river. All trails must be outside of the 50' vegetative buffer and all paved trails must be outside of the 150' pervious surface buffer. In some cases the buffers along the river are larger to compensate for encroachments in other locations. Due to stream buffer restrictions, the original plan calls for soft surface trails that are 50 to 60 feet back from the river. More information regarding this master plan can be found in The Rogers Bridge Trailhead and Greenway Plan, which was developed in 2003 by Bron Cleveland and Associates.

GWINNETT COUNTY FACILITIES

In addition to city owned parks, residents of Duluth frequently use Gwinnett County facilities. The Gwinnett Parks located within 2 miles of the city limits will be factored in to the needs assessment. Two miles is the typical service radius for a community park. The following is a brief description of the four Gwinnett County Parks.

Shorty Howell Park is a 67 acre community park located on Pleasant Hill Road, approximately half a mile from the Duluth city limits. This park is the closest Gwinnett Park to Duluth and is the most used by Duluth residents. Park facilities include seven baseball/softball fields, a football field, track, picnic and playground facilities, walking trails, and a community center.



Pinckneyville Park is about a mile and a half from Duluth and includes two park sites on Old Peachtree Road totaling 108 acres. The park includes seven baseball/softball fields, five soccer fields, roller hockey rink, dog park, a community center, playgrounds, picnic facilities, and trails.

Peachtree Ridge Park is a 155 acre community park located about a mile and a half east of Duluth on Suwannee Creek Road. This park, is currently under construction, and will eventually include 4 baseball/softball fields, 2 soccer fields, a football field, track, basketball courts, trails, picnic areas, and playgrounds.

The West Gwinnett Park and Aquatic Center is another facility that is under construction. It is located near Pinckneyville Park on Peachtree Industrial Boulevard, a little over a mile from Duluth. This facility is scheduled to be completed in 2008 and will include a 43,000 square foot natatorium, 2 multi-purpose fields, and a walking track.

The Gwinnett County Parks are large and offer a variety of active and passive recreation opportunities. Three of the Gwinnett parks are located near Duluth's southeastern quadrant, providing lots of recreational opportunities for that part of the City. These parks play an important role in the recreation needs of Duluth.

CHATTahoochee River National Recreation Area (CRNRA)

The Chattahoochee River National Recreation Area is a federal park that consists of 16 different units spread over a 48 mile section of the Chattahoochee River. Two of these units fall within or adjacent to Duluth's city limits, including the Suwannee Creek Unit and the Abbotts Bridge Unit. The Suwannee Creek Unit straddles both sides of the Chattahoochee River, and includes a 142 acre parcel located on the Duluth's northeastern boundary. The Suwannee Creek Unit is undeveloped and therefore not used as recreational land. The Abbotts Bridge Unit includes land on both sides of Abbotts Bridge Road, and on both sides of the Chattahoochee River. Only the 58 acre parcel on the south side of Abbotts Bridge Road has been developed as recreational park land; it includes picnic areas, restrooms, a trail, and a boat launch (motorized boats or canoes). There is approximately 65 acres of undeveloped Abbotts Bridge Unit property on the north side of Abbotts Bridge Road. The federally owned property along the river holds a lot of potential for passive recreation opportunities, unfortunately most of it remains inaccessible.



PUBLIC INPUT

One of the major goals established by the City at the beginning of this process was to make this a “Duluth specific” plan. The public input process is critical in achieving this goal. National recreation standards can be used to give general recommendations for improvements, but it is the incorporation of the Duluth resident’s opinions that brings value to the recommendations. Public input was gathered through a variety of means, including: steering committee meetings, public meetings, stakeholder interviews, and a web survey. This chapter will describe each aspect of the process and give detailed information regarding key meetings/workshops.

STEERING COMMITTEE

The first step in the public process was to form a steering committee to guide the development of the plan. The steering committee, established by the City of Duluth, was picked to represent a broad range of interests within the community. The steering committee met on a monthly basis to receive plan updates and to participate in workshops.

The most important of the steering committee meetings was a workshop held on April 10, 2007. During this meeting, the steering committee was asked to place dots next to the types of facilities that they would most like to see in Duluth parks. After a list was populated, the committee was then asked to list whether each facility would be an immediate need or a future need. Table 3.1 shows the results of the workshop; immediate needs are listed in the left column and future needs are in the right column. The numbers next to the facilities represent the number of votes each facility received.

Table 3.1 Immediate and Future Needs (Steering Committee Meeting)

Immediate Need	Future Need
Multi-use Greenway Trails (18)	Mini Outdoor Railroad (6)
Nature Trails in Parks (14)	Playgrounds (4)
Dog Park (10)	Off Road Mountain Bike Trails (3)
Natural Areas (9)	Basketball Court (2)
Group Picnic Shelters (7)	Volleyball Courts (1)
Skate Park (6)	Botanical Garden (1)
Tennis Courts (5)	Open Play Areas
Picnic Areas (5)	Racquetball / Handball Courts
Sidewalks	Soccer Fields
Neighborhood Parks	Softball Fields
	Baseball Field
	Football Field
	Community Center

The results indicate that trails, specifically multi-use greenways and nature trails, are the most desired facility. The top five “immediate needs” are all passive activities. Skate parks received the most votes among active recreation facilities, followed closely by tennis courts. The top future needs, according to the steering committee, include a miniature outdoor railroad, playgrounds, and off-road mountain bike trails.



PUBLIC MEETINGS

Public meetings serve several purposes: to educate the public on the planning process, to serve as an open forum for the public to voice their opinions and concerns regarding parks and recreation in Duluth, to help spread the word regarding the web site survey, and, during the final public meeting, to present a complete plan.

The first of the public meetings was held on March 13, 2007 to introduce the planning process to the public. During this meeting, park maps, for each of the six parks, were laid on tables and the public was asked to write what types of facilities they would like to add to each park. Below, in Table 2-1 is a chart breaking down these findings; the numbers represent the number of votes received.

Table 3.2 Community Suggestions (3-13-07)

	Bunten Road Park	Church Street Park	Roger's Bridge Park	Scott Hudgens Park	Taylor Memorial Park	W.P. Jones Park	FACILITY TOTALS
Acquire More Land					1		1
Badminton		1					1
Basketball Court						3	3
Bike Trail		2	5	3			10
Concessions				4			4
Frisbee Golf Course				1			1
Horseshoe Pit		1					1
Mini Golf Course						1	1
Mini Railroad			1		1		2
Passive Park			1		2		3
Pavilion				1			1
Picnic Area	1		3	1	3	1	9
Playground	2		2			2	6
Restrooms	1	4	1	7	3	2	18
Riverfront Connector			3	2			5
Skate Park	2	1			2	5	10
Swimming Pool	2						2
Trails			4	1		1	6
Trees				1			1
Ultimate Field		1		1			2
Volleyball Court		1					1

The most common recommendations made by the public include restrooms, bike trails, skate parks, picnic areas and trails. Restrooms were the most desired facility, and were the only facility listed for all of the parks. Excluding restrooms, trails/bike trails were the most recommended recreation item. These results again indicate a preference for passive recreation over active recreation; however, there was a significant desire for a skate park at this meeting. There were no recommendations for additional traditional active sports such as baseball, football, or soccer fields.



A semi-public meeting was held with representatives of various homeowners associations on May 22, 2007 at the Festival Center. During this meeting, the public placed dots next to the recreational facilities that they desired most. Table 3.3 is a summary of the results. Trails, dog parks and skate parks were the top requested facilities. Again, passive facilities were desired most by members of this group.

Table 3.3 Community Suggestions (5-2-07)

Most Desired Facilities
Multi-use Greenway Trails (12)
Dog Park (9)
Nature Trails in Parks (6)
Skate Park (5)
Natural Areas (4)
Picnic Areas (4)
Playgrounds (4)
Fishing (4)
Off Road Mountain Bike Trails (3)
River Access (3)
Game Tables (3)
Racquetball / Handball Courts (2)
Group Picnic Shelters (2)
Volleyball Courts (2)
Tennis Courts (2)
Mini Outdoor Railroad (1)
Basketball Court (1)
Soccer Fields (1)

STAKEHOLDER INTERVIEWS

Stakeholder interviews were held with city officials and key members of recreation groups. These interviews allow representatives from key groups, who are not on the steering committee, the opportunity to participate in the public input process. The stakeholder group interviews were arranged by the City of Duluth and were run by HDR. Interviews were held with the Duluth Recreation Department, the City Administrator, the Recreation Advisory Committee, the Duluth Association, Peachtree Ridge Youth Athletic Association, and the Duluth Seniors Group on March 27, 2007 and May 2, 2007.

In general, these interviews pointed towards a need for more passive recreational opportunities. Several groups discussed the importance of the Chattahoochee River, trails, and greenways. Only one stakeholder group indicated an immediate need for more active recreational fields, however a couple of groups foresaw a future need for lacrosse. An aquatic center was one of the issues of contention among stakeholders- supported by some, and not supported by others



because of liability concerns. Several facilities that stakeholders specifically said that they did not want include a skate park and a miniature outdoor railroad.

The results from the interviews generally agree with the results of the public and steering committee meetings. Although there was some disagreement regarding the need for additional sports fields, there was a clear desire for additional trails and passive greenspace.

RECREATION SURVEY

From March 5, 2007 through April 25, 2007, the residents of Duluth were given the opportunity to participate in a survey regarding the City of Duluth's parks and recreation system. The survey was available on-line, and paper copies of the survey were also provided at public meetings and at the parks and recreation office for those people without access to a computer. In total, there were 124 responses to the survey.

This survey provides critical information regarding park usage, including which parks are used, how the parks are used, and how frequently the parks are used. The survey included questions regarding specific recommendations for future facilities. The following is a summary of the survey, please note that these are just summaries of the responses. For complete survey results, see Appendix A.

Question 1: How often does someone in your family use City of Duluth park facilities?

Response: The majority (54.5%) used Bunten Road Park on a weekly basis. Church Street Park is the least visited park (92% do not visit the park).

Question 2: Who in your family uses Duluth City Parks and for what purpose?

Response: Rogers Bridge- used primarily for family recreation activities, such as picnics, walking and playground.
Scott Hudgens Park- used for soccer and the annual 4th of July Fireworks display.
W.P. Jones- used for tennis, playground and picnic grounds.
Taylor Park- used for concerts, festivals and fountain.
Church Street Park- used for playground.
Bunten Road Park- used for various senior citizen activities, youth baseball, youth soccer, walking and jogging.

Question 3: How often does your family use Gwinnett County park facilities?

Response: Residents of Duluth use the Gwinnett parks frequently (38% weekly and 31% monthly).

Question 4: Who in your family uses which Gwinnett County parks and for what purpose?

Response: Both active and passive facilities are enjoyed by a broad user group.

Question 5: What form of transportation do you use to get to City of Duluth parks?

Response: The majority of visitors (67%) drive to the Duluth parks.



Question 6: Would you be more likely to walk or ride a bike if safer routes were available to the parks? If yes, which parks?

Response: 77% of the respondents answered yes. The respondents would most like bike access to Bunten Road Park and Rogers Bridge Park.

Question 7: Which City of Duluth Parks are closest to your house?

Response: Nearly 65% of respondents live closest to Bunten Road Park. Only 7.6% of the respondents live closest to Church Street Park.

Question 8: How do you access information related to City of Duluth park programs, schedules, and facilities?

Response: The responses were fairly evenly distributed between the City of Duluth Newsletter, City websites and word of mouth.

Question 9: What is the primary park and recreation activity in which each member of your family participates or would like to participate?

Response: Duluth residents primarily participate in walking, playgrounds, running, picnicking, biking, soccer, baseball/softball, dog activities, and tennis.

Question 10: How would you rate the current recreational facilities provided by the City of Duluth?

Response: Bunten Road is above average, W.P. Jones and Scott Hudgens are average, and Rogers Bridge Park is below average.

Question 11: Please indicate your feelings about the number of recreational facilities provided by the City of Duluth.

Response: The facilities listed most as “have enough” include: baseball fields, softball fields, soccer fields, and tennis courts. The facilities listed most as “need more” include: nature trails, bicycle paths, natural areas, and sidewalks. The facilities listed most as “need less” include skate parks, mini outdoor railroad, soccer fields, and dog parks.

Question 12: Please list any other facilities that you believe should be added to the Duluth City Parks.

Response: The most popular responses include: swimming pool, restrooms, miniature train and dog park.

Question 13: What type of themed playground or equipment would you like to see incorporated into the Duluth City parks?

Response: The majority of responses listed trains as a theme for playground equipment.

Question 14: Would you be interested in seeing a series of trails that would link the schools, recreation areas, and library together?

Response: Seventy percent of respondents would be interested in seeing trail connections.

Question 15: In your opinion, what is the most important need regarding city parks in Duluth?



Response: Buying more land and upgrading existing facilities are considered to be very important.

Questions 16-19: are demographic questions targeting survey respondents.

Response: The majority of the respondents had lived in Duluth for more than 5 years (64%), had a high household income (40% annual household income over \$100,000) and approximately 90% of the respondents were white.

SUMMARY OF PUBLIC INPUT

The various pieces of the public input process (steering committee meetings, public meetings, stakeholder interviews, and the website survey) all tell a similar story. The residents of Duluth want more passive recreation opportunities, and there is a particular desire for more trails. The Chattahoochee River is seen as a resource that should be taken advantage of, particularly at Rogers Bridge Park. There seems to be little interest in developing active sports facilities. Baseball, softball, soccer, and football tended to rank at the bottom of the lists for future facilities, although they are listed as recreational activities that many residents (particularly the youth) participate in. A skate park and swimming pool were the most desired active recreation facilities, although there was also concern over adding these facilities to Duluth due to liability issues. The miniature outdoor trains received moderate interest, however there was also quite a bit of negative discussion regarding adding this facility. The existing parks are fairly well used with the exception of Church Street Park, which is largely unknown in Duluth.



NRPA STANDARDS

The National Recreation and Parks Association (NRPA) is a non-profit organization that works across the country to promote parks and recreation. Based on its 40 years of experience and exposure to national trends, NRPA has developed standards for estimating the quantities of facilities and park space. NRPA standards are the most widely used method for determining recreational needs; however, as with all national standard applications, there are limitations. These standards are a good baseline from which to begin, but they are nationally based, not Duluth based. This chapter discusses NRPA standards and applies the standards to the City of Duluth's recreation system. The plan recommendations in the final chapter will be based upon a combination of NRPA standards and public input to achieve a Duluth specific plan.

NRPA STANDARDS FOR QUANTITIES OF PARK LAND

The standards for quantities of park land, as with all NRPA Standards, are based upon the size of the population. The standards set by NRPA for an active park is 6 to 10 acres per 1,000 persons, and the standard for passive parks is 10 to 25 acres per 1,000 persons. In Table 4.1, these standards are applied to Duluth's 2007 population as well as the projected population for 2017. The current quantity of park space includes all park land in Duluth and parks (over 30 acres) within a 2 mile service radius of Duluth is included. This current quantity of park land includes the Chattahoochee River National Recreation Area (CRNRA), Shorty Howell Park, Pinckneyville Park, the West Gwinnett Natatorium, and Peachtree Ridge Park. The table indicates that there is a lot of active park land within a 2 mile radius of the city. The amount of active park space exceeds the maximum 2007 standards as well as the minimum standards set for 2017. There is a deficit of passive park space; 144 acres of passive park space would need to be developed over the next 10 years to meet the minimum standard.

Table 4.1 NRPA Active / Passive Park Standards

Park Type	Current Quantity of Park Space 2007	Standard Quantity of Park Space for 2007 (pop = 27,000)	Standard Quantity of Park Space for 2017 (pop = 36,000)	Required Land (Current Qty vs. Standard Qty 2017)
Active	318 acres	162 to 270 acres	216 to 360 acres	0 to 42 acres
Passive	216 acres	270 to 750 acres	360 to 900 acres	144 to 684 acres

NRPA CLASSIFICATION STANDARDS FOR PARKS

NRPA has developed a standard system for classifying parks, based upon size and the types of facilities offered. There are 10 different classifications of parks described by NRPA, but for the purposes of this study, the following classifications will be used: mini-park, neighborhood park, community park, and greenways. Criteria for each classification is general, yet useful in estimating the amount type of parkland needed. The following is a description of each typical park classification.



Mini-Park

Mini-parks, as the name suggests, are the smallest classification of park. They are developed to address limited, isolated, or unique recreational needs. Typical examples of mini-parks include a playground, or a walking path through a small wetland area; these parks do not include areas for organized active recreation. Church Street Park is an example of a mini-park in Duluth. Mini-parks are expensive to maintain in relation to the amount of recreation that they provide; therefore, it is recommended to develop a small number of mini-parks targeted to specific needs in the community.

Desirable Site Characteristics:

- Parcel size 2,500 square feet to 5 acres
- Strategically locate adjacent to high density housing areas or housing for the elderly
- Strategically locate to take advantage of unique recreational opportunities, such as scenic vistas, or unique natural habitats.
- Maintain good accessibility and high visibility
- Neighborhood residents within walking distance

Service Area:

- ¼ mile radius

Typical Facilities:

- Playground,
- Walking trail
- Picnic shelter
- Small informal play field

Standard:

- Provide 0.08 acres of Mini Parks per / 1,000 population

Neighborhood Park

Neighborhood parks serve as an area for informal recreation facilities such as playgrounds, picnic shelters, open fields, and game courts. Neighborhood Parks are a key component of a city's park system and are essential for providing adequate recreation opportunities for the residents. W.P. Jones Park is an example of a neighborhood park in Duluth.

Site Characteristics:

- Parcel size 5 to 20 acres
- Easily accessible to the neighborhood population, geographically centered with safe walking and biking access
- School facilities often function as neighborhood parks

Typical Facilities:

- Playground(s)
- Picnic shelters (both group and individual)
- Multi-purpose courts



- Large (min 1 acre) informal play field with backstop
- Parking
- Walking Trail
- Dog Park
- Restrooms (optional)

Service Area:

- ½ mile radius; targeting up 1,000 to 5,000 people

Standard:

- Provide 1 to 2 acres of neighborhood park space per 1,000 population

Community Parks

Community parks combine areas suited for intense, programmed recreational facilities with areas of natural quality for outdoor recreation. Community parks are intended to provide recreational facilities for organized athletic leagues, recreational programs, and passive recreational opportunities such as trails and playgrounds. Community parks, in addition to neighborhood parks, provide the core recreational needs of Duluth. Buntzen Road Park is an example of a community park in Duluth.

Site Characteristics:

- Parcel size: 20 to 100 acres
- Site should include both natural areas and areas that can support intense development
- Central location within community to be served
- Accessible by major roadway and safe bicycle/pedestrian facilities
- Swimming pools, lighted athletic fields and tennis courts, pedestrian and exercise trails, large picnic areas with shelters, landscaped areas to buffer adjacent developments, areas of natural value and water areas.

Typical Facilities:

- Multiple Playgrounds
- Picnic shelters (both group and individual)
- Baseball/Softball fields (multiple fields) (lighted)
- Multi-Purpose Fields (may be lighted)
- Tennis Courts
- Informal play field
- Dog Park
- Recreation Center
- Concessions and Restrooms Buildings
- Maintenance Facility
- Parking
- Walking Trails (combination of paved and unpaved trails)

Service Area:

- 1 to 2 mile radius, several neighborhoods

**Standard:**

- Provide 8 acres of community park space per 1,000 population

Greenways

Greenways are uninterrupted corridors of open space that connect destination points such as neighborhoods, parks, schools, and commercial areas. Typically greenways contain paved multi-use trails which serve bikes and pedestrians, and offer an alternative route of transportation within a community. The Western Gwinnett Bikeway is an example of a greenway.

Site Characteristics:

- Corridor size: 25' minimum width, length is variable size
- Natural or man made corridors

Typical Facilities:

- Multi-use or soft surface trails
- Interpretive signage
- Scenic overlooks

APPLICATION OF NRPA STANDARDS FOR SPECIFIC PARK CLASSIFICATIONS

Table 4.2 compares the quantities of specific park types within Duluth to NRPA's recommended standards. The table includes mini-parks, neighborhood parks, and community parks.

Unfortunately, NRPA does not have a standard for greenways. The column that represents current acreage includes Gwinnett County facilities within a 2 mile service radius of the city. The table indicates that Duluth has a surplus of mini-parks and community parks and a deficit of neighborhood parks. The large surplus of community parks shown in the table is misleading taken out of context. Bunten Road Park (45 acres) is the only City of Duluth community park, the remainder of the community parks (327 acres) are Gwinnett County Parks. While these parks serve Duluth residents, they are outside of the city limits and only serve the fringes of Duluth. Some portions of Duluth do not fall within the service area of a community park.

Table 4.2 Existing City Parkland Acreage

Park Types	Park	Standard Ac/Pop	Current (Acres)	Standard 2007** (Acres)	Standard 2017*** (Acres)	2017 Difference (Acres)
Mini-Park	Church Street Taylor Memorial/Town Green	.08/1000	4.1	2.2	2.9	1.2 surplus
Neighborhood Parks	W.P. Jones Roger's Bridge	1.5/1000	33.35	41	54	20.65 deficit



Community Parks	Bunten Road Shorty Howell Park*, Pinckneyville Park*, Peachtree Ridge Park*	8/1000	356	216	288	68 surplus
------------------------	--	--------	-----	-----	-----	------------

*Shorty Howell, Pinckneyville, and Peachtree Ridge are Gwinnett County Facilities

**2007 Population estimated to be 27,000

***2017 population estimated to be 36,000

NRPA STANDARDS FOR SPECIFIC RECREATION FACILITIES

NRPA standards for the development of individual recreational facilities, such as athletic fields and tennis courts, are listed in Table 4.3. The table includes quantities of current facilities as well as the NRPA standards for these facilities for 2007 and 2017. The chart indicates a current surplus in active recreation facilities such as baseball and soccer. A deficit is shown for tennis courts, but many semi-private tennis courts located in local subdivisions provide facilities for a large portion of the population.

Table 4.3 Existing Facilities

Facility Type	NRPA	Duluth Existing	Duluth Required (2007/2017)	2007 Difference	2017 Difference
Ball Fields	1 / 2,500	20	11/14	+9	+6
Soccer Fields	1 / 4,000	15	7/9	+8	+6
Football Fields	1 / 20,000	1	1/2	0	-1
Tennis Courts	1 / 2,000	8	14/18	-6	-10
Basketball (outdoor)	1 / 5,000	3	5/7	-2	-4
Volleyball (outdoor)	1 / 5,000	2	5/7	-3	-5
Running Track	1 / 20,000	1	1/2	0	-1
Swimming Pool	1 / 20,000	1	1/2	0	-1
Playground	1 / 1,000	23	27/36	-4	-13
Recreation Center w/Gym	1 / 20,000	1	1/2	0	-1
Community Center	1 / 20,000	2	1/2	+1	0
Roller Hockey	1 / 25,000	1	1/1	0	0

NRPA STANDARDS CONCLUSIONS

NRPA standards provide a point of beginning for making recommendations for the planning of future facilities. These standards show that in general, the City of Duluth currently has an adequate supply of active sports land and facilities, while the current quantities of passive land and facilities are below NRPA Standards. This correlates with the findings from the public input section. When the standards are applied to the population of Duluth over the next 10 years, it is apparent that several park facilities must be added to meet the needs of the growing population.



RECOMMENDATIONS & PARK MASTER PLANS

Over the next 10 years, Duluth is expected to grow from approximately 27,000 people to 36,000. The following recommendations address how Duluth should plan for the growth of its park system to meet the needs of its growing population. The proposed recommendations are based upon a combination of public input and NRPA standards, resulting in a plan that specifically addresses the needs of the City of Duluth. The first part of this chapter includes general recommendations for the development of greenways and parks within Duluth. Following the general recommendations are specific plans for the improvement of five of Duluth's existing parks and a plan for the development of the Central City Bikeway. Graphic master plans with written description are provided for each park and the bikeway.

GENERAL FACILITY RECOMMENDATIONS

The general facility recommendations are given for each category of park: greenways, neighborhood parks, community parks, and special use facilities. These recommendations include approximate quantities of park land to be developed, general locations for future park development, and the types of facilities to be included in these parks. The recommendations in this section are based upon the clear need for additional passive recreational facilities indicated by public input and NRPA standards. The Park System Plan shown in Figure 5.1 graphically depicts how Duluth's park system should look in 2017. The Park System plan includes service radii for each park type and general locations for future parks.

Greenways

The development boom in Duluth over the last 20 years has resulted in a car oriented environment with few bike or pedestrian facilities. It is therefore understandable that multi-use trails and nature trails were the most requested recreational facility during the public input process. The benefits of trails include: an alternative means of transportation, a place for recreational walking and biking, and the preservation of wildlife habitat.

Several greenway trails are currently in various stages of planning, including the Rogers Bridge Bikeway, the Western Gwinnett Bikeway, and the Chattahoochee River Greenway. Detailed descriptions of these trails can be found in the Facilities Inventory Chapter of this report. Over the next 10 years, it is recommended that Duluth develop all three of these greenways, and the Central City Bikeway which is described later in this chapter. Please refer to Figure 5.1 for locations of greenways within Duluth. The development of all four of these greenways would create approximately 10 miles of trails.

Although all of these trails will be valuable recreational resources, the Chattahoochee River Greenway offers the most recreation potential. A greenway along the Chattahoochee River would tie together two of Duluth's major parks (Scott Hudgens Park and Rogers Bridge Park) as well as several CRNRA properties, creating one large park along Duluth's northern boundary. Although the original River Greenway Plan calls for a soft surface trail to be installed, it is recommended that the trail be paved to accommodate multiple uses. Although a paved, multi-use trail will be more difficult to achieve, due to land acquisition issues associated with avoiding

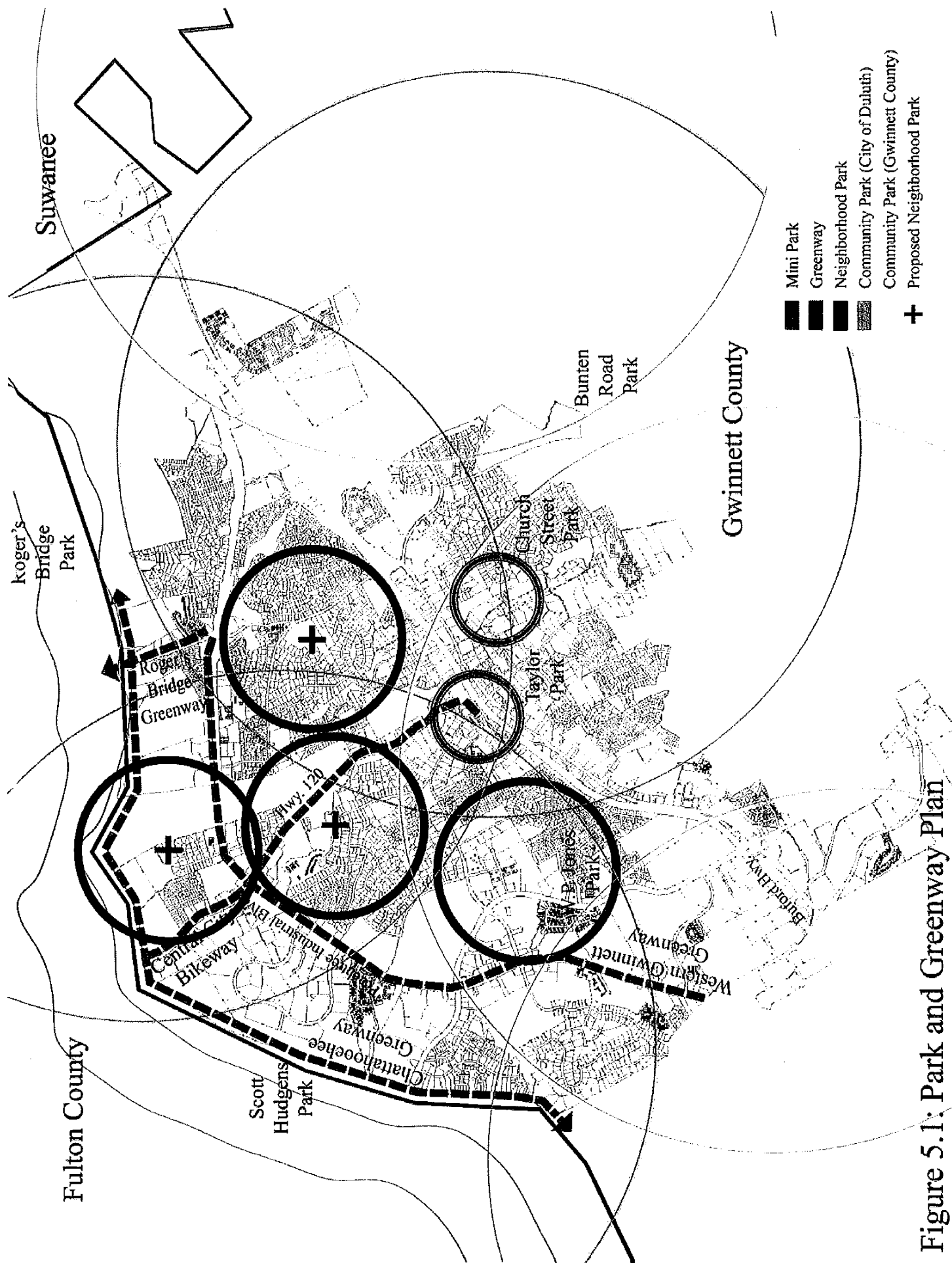


Figure 5.1: Park and Greenway Plan



the river's 150 foot impervious buffer, the overall recreational benefits outweigh the costs. The estimated cost for a river greenway is approximately \$5,990,100; this includes design fees and a 15% contingency, but does not include costs for land acquisition. See Appendix B for a breakdown of costs.

Neighborhood Parks

NRPA standards indicate a deficit of neighborhood parks in Duluth. It is recommended that Duluth develop 3 new neighborhood parks (approximate size of 10 to 15 acres). The new neighborhood parks should be located in the northwestern and northeastern quadrants of Duluth, as shown in Figure 5.1. These locations are closer to the central area of Duluth which is lacking park property.

The City of Duluth owns two undeveloped parcels that are good locations for neighborhood parks. An 11 acre city owned parcel on Craig Drive which sits within a floodplain forest offers excellent potential for trails and picnicking. The City's 2.3 acre parcel off of Peachtree Industrial Boulevard in the River Mill Subdivision also offers potential as a neighborhood park. Additional property should be acquired to make this a true neighborhood park- 2.3 acres is too small to support the needs of the surrounding neighborhood. A park in this location should include trails, picnicking, open space, and a playground. This park is also very close to the Chattahoochee River and could be linked to a greenway along the river.

Community Park

The community parks in and around Duluth provide some passive activities, but tend to be dominated by active facilities. These types of parks are a valuable part of the recreation system, but there is an adequate number of these types of parks. The needs assessment indicated that the current number of sports fields in and around Duluth exceed the minimum standards for 2017. It is therefore recommended that Duluth develop a community park that is primarily passive.

A passive community park should be developed along the Chattahoochee, made up of city owned parcels and CRNRA parcels owned by the national park service. The existing scattered park parcels along the river could be made contiguous with the developments of a greenway corridor as described above. This community park could include: trails, playgrounds, picnic areas, informal play fields, and river access. River access includes facilities such as overlooks, fishing spots, boat launches, and locations where people physically interact with the water. The development of a community park along the river will require a huge coordination effort between the City of Duluth and the National Park Service, but would result in the addition of as much as 207 acres of passive park land for the residents of Duluth. The National Park Service has responded positively regarding the multi-jurisdictional development of a trail along the Chattahoochee River. The following is an expert from David Ek (CRNRA representative) taken from the Rogers Bridge Trailhead and Greenway Report (2003): "Congress' intent when authorizing the establishment of the Chattahoochee River National Recreation Area was to have a multi-agency and private partnership that would ensure the protection of the Chattahoochee River corridor, including establishment of trail linkages throughout the 48-mile park. Therefore, the creation of a greenway linkage between the Suwanee Creek and Abbotts Bridge Units, involving diverse partnerships between landowners, is perfectly consistent with the park's purpose and National Park Service (NPS) policies."



Scott Hudgens Park and Rogers Bridge Park would both be pieces of the larger community park, although Scott Hudgens would remain primarily an active facility. The master plans described later in this chapter indicate how each park should be developed to include a river greenway and to improve connections to the river.

Special Use Facilities

The most requested active sports facility during the public input process was a skate park. Although a skate park exists at Pinckneyville Park, southwest of the city, it is recommended that Duluth develop its own skate park. Skate parks can be developed as stand alone facilities, or as facilities within parks. The master plan for W.P. Jones Park, described later in this chapter, includes the development of a small skate park. Because there is another skate park within close proximity, there is no need to develop a large stand alone facility.

Additional public tennis facilities should be added in Duluth. In addition to tennis, the courts are also used for an Asian foot-ball game. Tennis courts are not an immediate need, however approximately 10 should be added over the next 10 years. It is recommended that additional park land be acquired adjacent to Scott Hudgens Park to accommodate a tennis facility.

An aquatic facility is not recommended for Duluth. The development of the West Gwinnett Aquatic Center, less than 2 miles southeast of the city should be adequate to provide for the needs of the residents of Duluth. The facility will include a 43,000 square foot natatorium, a 9,500 square foot leisure pool, and a sprayground. The West Gwinnett Pool is scheduled to open in early 2008.

A miniature train is planned at the Southeastern Railway Museum in Duluth. The museum is in possession of a train set, has a space dedicated for tracks, and is raising money for restoration of the train and installation of the facility. A separate miniature train facility within a City of Duluth park is not recommended.

CENTRAL CITY BIKEWAY

The goal of the Central City Bikeway is to create a multi-use trail that connects the Town Green, in downtown Duluth, to the Chattahoochee River. The trail should be paved, and a minimum of 10 feet in width. The following is a description of two different options for routing the trail, and the positives and negatives of each option.

Option A begins at the Duluth Town Green, follows Hill Street to Highway 120, and heads north along the western edge of Highway 120. A proposed roadway project will realign a portion of Highway 120; the trail will follow the old road bed along this portion of realigned road. The majority of the trail, however, will run along the existing roadway. A signalized, at-grade, crossing provides a route across Peachtree Industrial Boulevard. The trail terminates at a proposed trail head at the Abbotts Bridge Unit of the CRNRA.



The typical cross section for Option A includes a guardrail and 7 foot (minimum) separation between the edge of the roadway and the trail, to minimize vehicular conflicts. The majority of the route has very steep cross slopes which will require the installation of walls and handrails. Stop signs for trail users should be installed at all roadway intersections, and all intersections should have marked crosswalks. The estimated cost for Option A is approximately \$4,443,750; this includes design fees and a 15% contingency, but does not include costs for land acquisition. See Appendix B for a breakdown of costs.

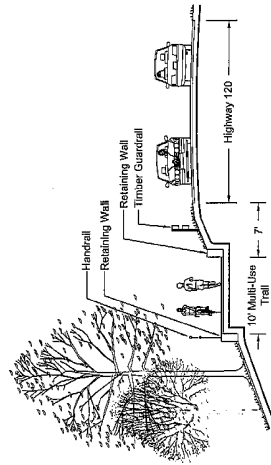
Option B follows the same route as Option A until the Frankie Lane intersection, where the trail diverges from Highway 12, and heads northwest along a stream corridor. Approximately half of the Option B route is adjacent to the stream, and therefore must be constructed outside of the State of Georgia's 25 foot stream buffer. The trail must be pervious in order to be within the City of Duluth's 75 foot buffer. Grading should be kept to a minimum to avoid destroying the route's mature vegetation; boardwalk segments should be used in sensitive areas to avoid grading. The route passes through an 11 acre undeveloped city owned parcel on Craig Road. This parcel lies within the floodplain of the adjacent creek and offers excellent opportunity as a passive neighborhood park. The trail continues through a townhome development where it will pass through a tunnel under Rogers Creek Court. Another tunnel will be required as the trail passes beneath Peachtree Industrial Boulevard. The tunnels beneath the roadway should be a minimum of 14 feet in width and 10 feet in height to ensure proper trail safety requirements. Although there are existing box culverts beneath both Rogers Creek Court and Peachtree Industrial Boulevard, the dimensions of these culverts are not sufficient for trail use. After passing under Peachtree Industrial, Option B runs through the back side of several commercial and industrial lots and terminates at the CRNRA property, in the same location as Option A. The estimated cost for Option B is approximately \$7,003,750; this includes design fees and a 15% contingency, but does not include costs for land acquisition. See Appendix B for a breakdown of costs

Options A and B each have positive and negative characteristics. Option A is the less expensive option; there is less clearing, grading, and property acquisition necessary to install a trail along an existing roadway shoulder than there is through a forested stream corridor. The tunnels associated with Option B also add considerable expense. Option B, however, is the more scenic option, following along a quiet stream corridor rather than a busy roadway. Option B is a more safe option as well, reducing potential pedestrian/ vehicular conflicts by passing beneath roadways and avoiding driveways.

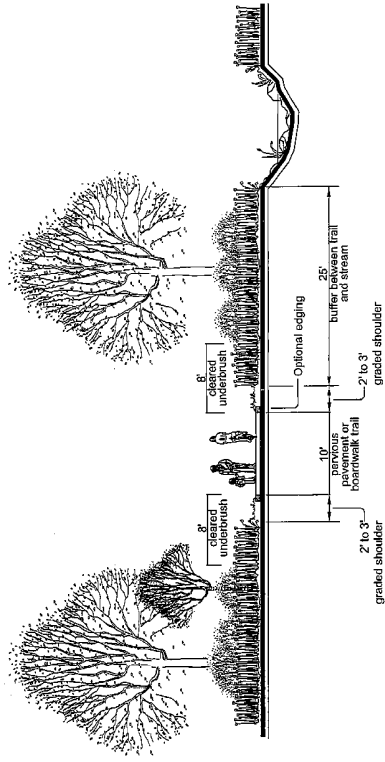
Regardless of the exact route, connections to surrounding residential neighborhoods, schools, parks, and commercial districts are essential to the success of this trail. Recommended connections include: Duluth Middle School, Duluth High School, the proposed park space at Craig Drive, the Western Gwinnett Bikeway along Peachtree Industrial, and the adjacent residential communities along Frankie Lane, Pine Needle Drive, River Mill Drive, and Abbotts Pointe. These connections will bring more users to the trail and will allow more people access to the river or downtown Duluth

Legend

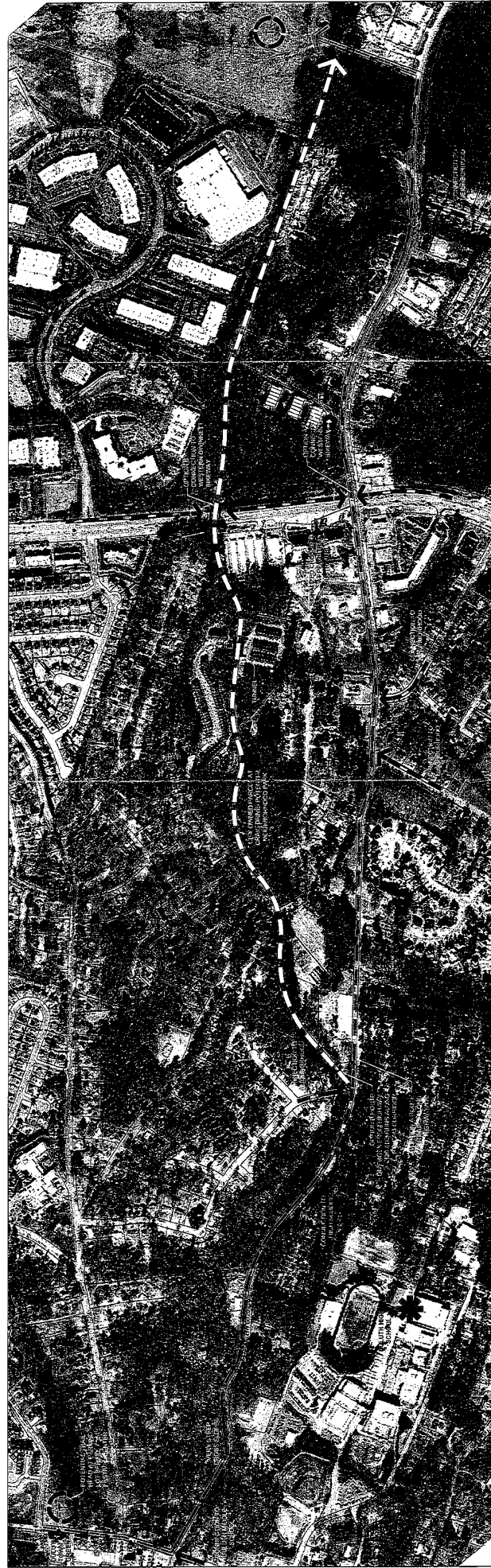
- Proposed Route (Both Options)
- Proposed Route (Option A)
- Proposed Route (Option B)
- Potential Connection
- Trail Head
- Point of Interest



Option A: Typical Section



Option B: Typical Section





EXISTING PARK IMPROVEMENTS

A key component of this plan is the improvement of existing park facilities, most of which have never had a formal park master plan. A site inventory and analysis was performed on each of the city's parks to gain insight into how the park functioned, how it could be improved, and what types of facilities could be added to accommodate the future needs of Duluth. Walking trails, playgrounds, picnic areas, and informal open space have been added to most of these parks in order to address the need for additional passive facilities within Duluth. As land acquisition costs increase, and the availability of large open tracts of land diminishes, it becomes all the more important to maximize recreation opportunities within existing parks.

Church Street Park:

The goal of this master plan is to improve the functionality of Church Street Park, while maximizing aesthetics and security. The park site offers several challenges including steep topography, a large power easement that bisects the park, and security/vandalism issues.

The plan calls for the current hodgepodge of on-street and off-street parking to be replaced by a clean edge of on-street perpendicular parking. The park's usable greenspace is increased by removing parking from within the park and relocating it onto the street. An entry plaza provides a welcoming experience for park visitors. The existing park pavilion remains in its current location, but the space around it is reorganized to create an informal play field. Visitors now have a place to throw a football, kick a soccer ball, or just gather and talk during picnics. The playground equipment is relocated to create space for the play field, but remains adjacent to the group pavilion. An arbor overlooks the playground, providing a shady place for parents to sit. The basketball court is to remain as it is, but a row of evergreen planting is proposed to screen the adjacent single family residence. The eastern corner of the property is a rain garden which infiltrates storm water into the ground, provides a habitat for wildlife, and provides an aesthetic element in the park. A 1/6 mile paved walking circuit ties the various park elements together. Tree planting is a key element of the plan; groupings of trees are been added to break up the stark hillside and provide shade for park visitors. Tree placement and spacing are such that clear views are maintained throughout the site for security issues. Trees with a mature height of 15 feet maximum may be planted within the power easement. The estimated cost for Church Street Park is approximately \$521,813; this includes design fees and a 15% contingency. See Appendix B for a breakdown of costs.

The 3 acre parcel adjacent to the park's northwestern boundary is a potential expansion area. A large portion of this property contains a septic tank drain field and is relatively flat and open. This space would be good for the development of a larger informal play field. Additional parts of the property are suitable for picnic facilities, playgrounds, additional basketball courts, and walking trails. The addition of this property would more than double the size of Church Street Park.



DESIGN ELEMENTS

ENTRY PLAZA: IMPROVED ENTRANCE INTO PARK WITH DECORATIVE PAVING AND SIGNAGE.

WALKING TRAIL: A PAVED, 1/4 MILE WALKING TRAIL ENCRICLING THE PARK.

PARKING: EXISTING PARKING LOT REMOVED AND REPLACED WITH PERPENDICULAR PARKING TO OPTIMIZE GREEN SPACE.

LAWN: OPEN SPACE FOR INFORMAL PLAY SUCH AS FRISBEE OR PITCH AND CATCH.

RAIN GARDEN: AREA FOR TREATMENT AND INFILTRATION OF STORMWATER, NATIVE PLANTINGS, AND WILDLIFE HABITAT.

PLAYGROUND: LOCATED TO MAXIMIZE OPEN SPACE FOR LAWN. ARBOR ADDED AS SHADED SEATING AREA FOR PARENTS.

EXISTING BASKETBALL COURTS AND PICNIC SHELTER TO REMAIN.





Taylor Memorial Park:

Taylor Park is located in the heart of Duluth, and is essentially part of the Town Green. The focus of the master plan is the design of a playground within the park. The playground is planned to sit within a grove of mature hardwood trees in a space approximately 90 feet in length and 30 feet in width. After exploring several options and themes, it was decided to postpone making a final decision until completion of the new City Hall which is adjacent to the park site. Therefore all three conceptual plans are included in this report.

The first concept is a wildlife theme that includes river reptiles and amphibians. The space is defined by a colorful rubberized surface that includes blue to represent water and shades of yellow and buff to represent sand. Reptile and amphibian play sculptures are spaced throughout the playground providing various playful activities for children. Play structures include a mosaic snake, a gecko climber, and alligator slide, a family of frog sculptures, and a wooden climbing overlook structure. Seat walls are located around the perimeter of the playground for parents. The estimated cost for this option is approximately \$243,305; this includes design fees and a 15% contingency. See Appendix B for a breakdown of costs.

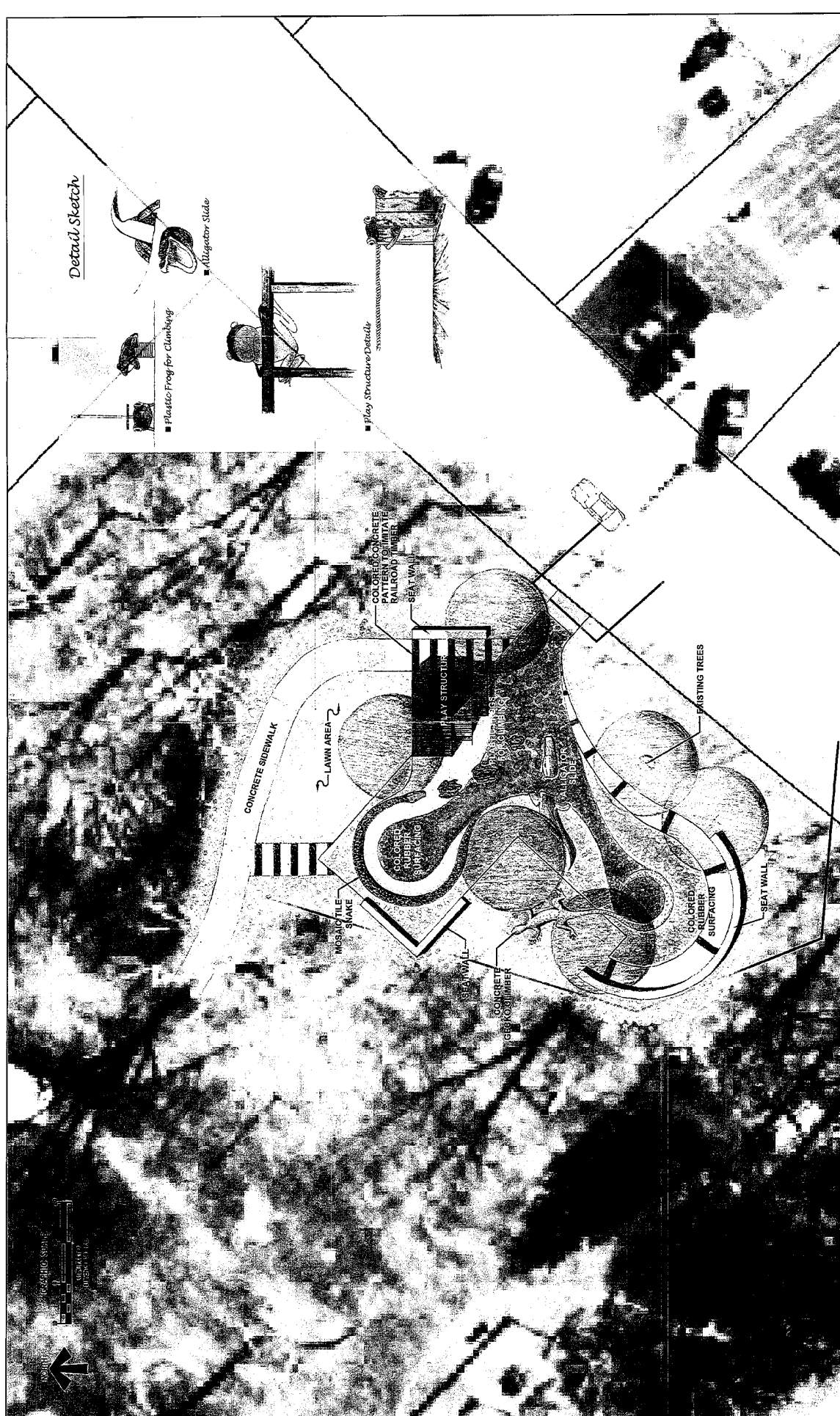
The second concept is a natural landscape theme. Fabricated boulders of various sizes and shapes are placed around the playground. A large "natural bridge" is the centerpiece of the playground. The playground surface includes a combination of mulch and rubberized surfacing. Seat walls provide seating opportunities for parents. The estimated cost for this option is approximately \$195,910; this includes design fees and a 15% contingency. See Appendix B for a breakdown of costs.

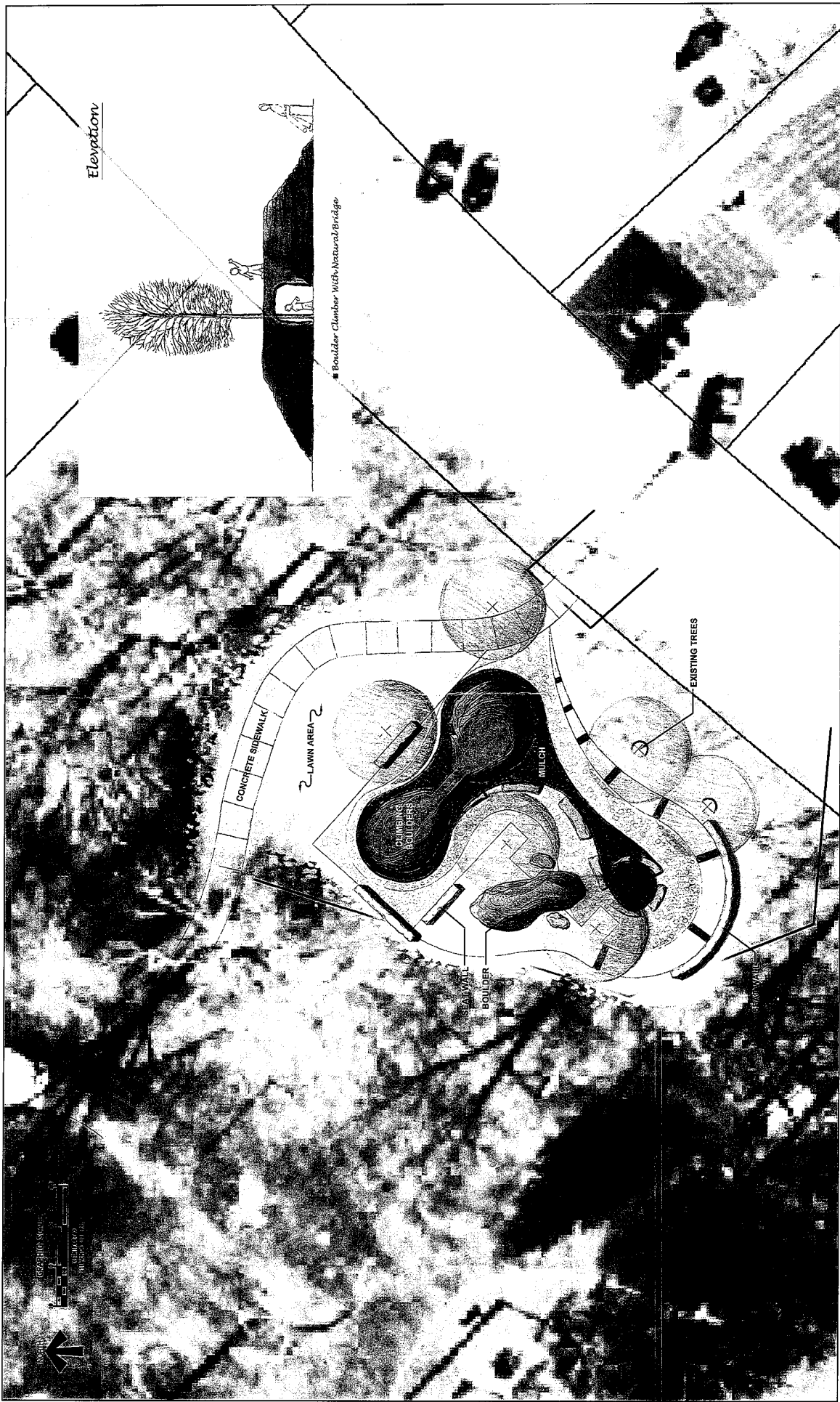
The third concept is a miniature city theme based upon Duluth. Play structures include a city hall, train depot with train, police station with police car, fire station with fire truck, downtown commercial buildings, and a festival center with stage. The playground surface includes a rubberized surface, and a circular sand box around the mini festival center. Seat walls provide seating opportunities for parents. The estimated cost for this option is approximately \$258,700; this includes design fees and a 15% contingency. See Appendix B for a breakdown of costs.

Rogers Bridge Park:

Rogers Bridge Park is designed to be a passive neighborhood park. The park is too small (12.75 acres) to support active recreation. In addition, restrictions set by the Chattahoochee River Corridor Plan limit the amount of pervious surface and disturbance that can occur within the park because the majority of the site is within the floodplain. These limitations make it difficult to provide the necessary parking necessary for active sports facilities

The master plan for Rogers Bridge Park is divided into different zones: the dog park, the great lawn, the quiet corner, the playground area, and a trail head. Two vehicular access points are located off of Rogers Bridge Road at each end of the park. A parking lot at the southern end of the park provides access to the great lawn, nature trails, and a dog park. The 1.25 acre dog park provides separate spaces for large and small dogs. The dog park also includes a variety of seating areas for people, including shelters, benches, and large boulders. The dog park consists of







a combination of open space and forested space. A stairway, located at the southern end of the dog park, provides pedestrian access for neighbors walking over from the surrounding neighborhood developments.

The 2.3 acre Great Lawn sits at the center of the site in an existing clearing. The semicircular lawn is defined by a perimeter walkway and tree planting. Small shelters provide seating opportunities around the perimeter of the lawn. The purpose of the lawn is to provide a large area for informal play. A bioswale runs along the western edge of the Great Lawn from the parking lot to an existing swale. The bioswale infiltrates and treats stormwater runoff from the parking lot. A smaller lawn area located adjacent to the Great Lawn provides a quiet corner for relaxation within the park. Two small groves of trees provide separation for the more active Great Lawn. Large stone blocks within the groves of trees provide informal seating for visitors looking to relax or read a book. The quiet corner backs up to the 6.7 acre conservation area within the existing woodland. This area contains nature trails, interpretive signage, and seating areas and includes. A portion of the conservation area is part of the CRNRA.

The Chattahoochee River runs along the edge of the northern end of the park, providing an enormous potential for recreation. Unfortunately the river is inaccessible from the park and screened from view by a dense mass of invasive vegetation. It is very important to improve the connection to the river from the park. An overlook structure provides views to the river; steps down from the overlook provide access to the water. A couple of clearings located along the river bank provide locations for fishing. Visual connections to the River should be established by removing the thick invasive exotic vegetation. Proposed development within the park is restricted by a 50 foot undisturbed buffer and a 150 foot pervious surface buffer along the river. The only surfaces allowed within 150 feet of the river are mulch, grass, or an unimproved dirt surface.

A swale separates the facilities at the northern end from the Great Lawn. This swale, which is currently a straight ditch, is restored to a more meandering natural form. Tree planting on both sides of the swale acts as a vegetative buffer, and also helps define the two spaces. A pedestrian bridge over the swale provides access between the park's northern facilities and the Great Lawn.

The facilities designed for the northern end of the park include a trail head/restroom building, picnic shelters, and playgrounds, and a 40 space parking lot. The picnic area includes the existing group shelter and two small group shelters overlooking an informal play field and views to the Chattahoochee River. Adjacent to the picnic area are a sand volleyball court and playground. The playground includes a variety of structures for various ages. Portions of the playground are located among a grove of existing trees. Shade structures overlooking the playground are provided for the parents. A restroom, which also serves as a trail head, is located adjacent to the playground and picnic area and sits on a strip of land above the Chattahoochee's floodplain.

The trail head provides access to three significant greenway trails that are planned to either pass through or adjacent to the park, including the Western Gwinnett Bikeway (along Peachtree Industrial Boulevard), the Chattahoochee River Greenway, and the Rogers Bridge Bikeway (along Rogers Bridge Road). Rogers Bridge Bikeway is planned to begin at the Western



Gwinnett Bikeway on Peachtree Industrial Boulevard, run along the edge of the park, and then connect to an existing greenway on the other side of the Chattahoochee. The key to the success of the Rogers Bridge Bikeway is the restoration of the original Rogers Bridge which will provide the connection over the Chattahoochee. The restoration of this bridge will also add a unique historical element to the park. The bridge is the largest example of its type within the State of Georgia.

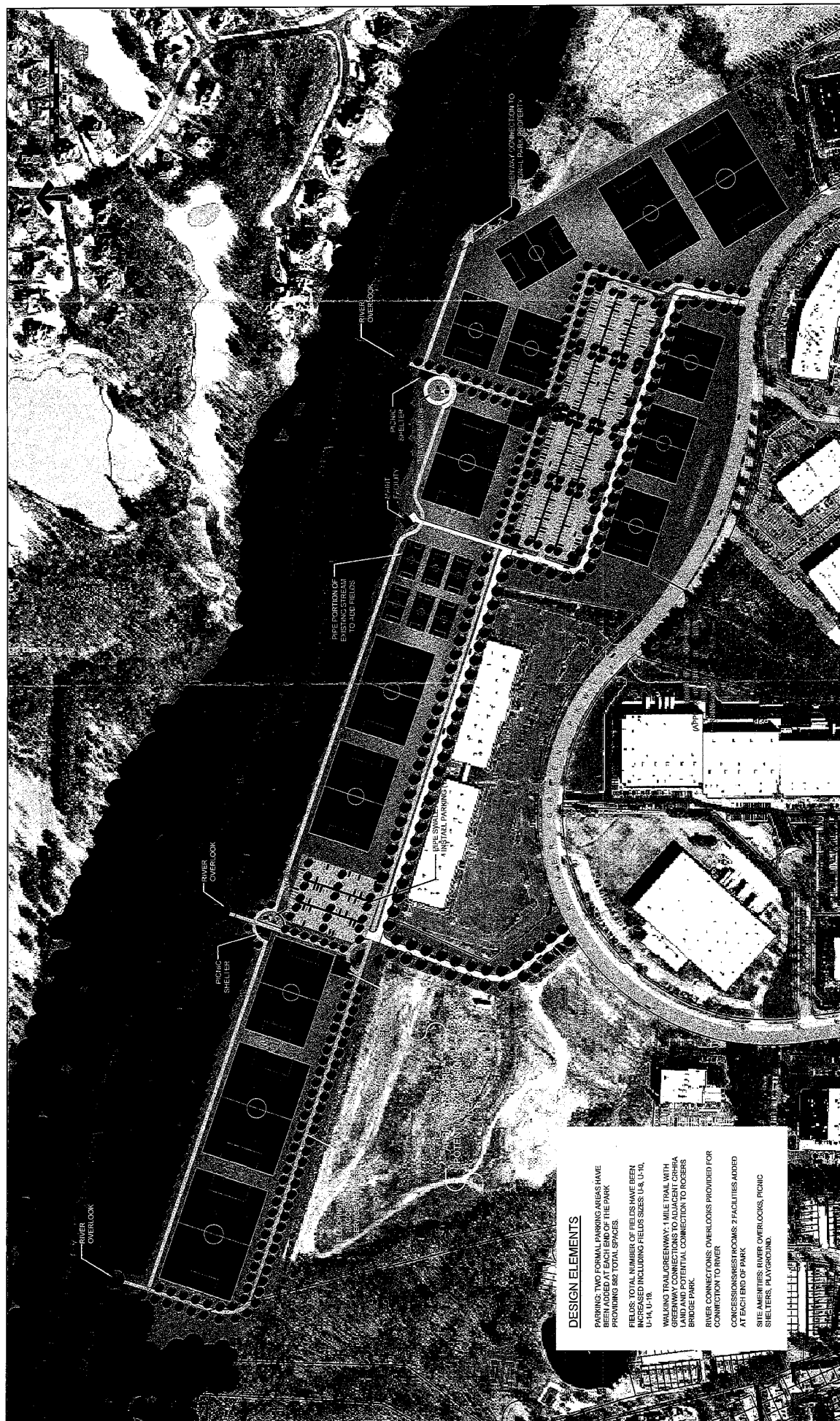
Significant tree planting, or reforestation, is needed on this site to create both visual and ecological buffers, separate spaces, and to provide shade. The site, as it is today, is a large, unwelcoming, open field offering very little visual interest. Tree planting is essential in defining the various park spaces. The trees should be planted to mimic local forest patterns, which involves the use of native species, an appropriate mix of species, and an appropriate distribution of trees. The estimated cost for this plan is approximately \$3,270,570; this includes design fees and a 15% contingency. See Appendix B for a breakdown of costs.

A 10 acre parcel, on the western edge of the park, is a potential area for expansion. This parcel is very similar to the Rogers Bridge Park parcel- it is low, flat, and open. An existing boat ramp on this parcel could add a valuable boating component to Rogers Bridge Park. As it is today, Rogers Bridge Park is too small to include boating facilities, but the addition of this parcel would allow this to happen. The site also offers potential for more fishing, playgrounds, picnic areas, informal play fields, and perhaps a potential outdoor arena.

Scott Hudgens Park

Scott Hudgens Park is a 40 acre site that was donated to the State of Georgia DNR and leased to the city of Duluth for the primary use of soccer. The following master plan is based on a master plan developed by The Atlanta Fire United Soccer Association, which runs the soccer programs at Scott Hudgens. This master plan retains the total number and size of fields shown in the Atlanta Fire master plan, but modifies the layout to improve pedestrian and spectator facilities. The main objectives of this master plan include improving the pedestrian/park visitor facilities and expanding the park's game field facilities.

The park is accessed by two entrance points from River Green Parkway, located at each end of the park. Currently, a joint use agreement allows the city to use the western entrance, however it is recommended that the city purchase this parcel to ensure permanent access. A proposed lot provides 126 spaces of parking for the western end of the park. A two-way park road connects the two entrances and provides vehicular circulation throughout the park. The parking that currently exists along this park road is removed and relocated to designated parking lots at each end of the park. Removing the on-street parking reduces the potential for vehicular/pedestrian conflicts as well as improves traffic flow. A 450 space parking lot is located at the eastern end of the site on property that is currently owned by the AT&T Golf Classic. The City currently has a joint use agreement to use this property; however it is recommended that the city purchase this property to ensure that parking needs continue to be met within the park.



DESIGN ELEMENTS

PARKING: TWO FORMAL PARKING AREAS HAVE BEEN ADDED AT EACH END OF THE PARK PROVIDING 582 TOTAL SPACES.

FIELDS: TOTAL NUMBER OF FIELDS HAVE BEEN INCREASED INCLUDING FIELDS SIZES: U-8, U-10,

WALKING TRAILGREENWAY: 1 MILE TRAIL WITH GREENWAY CONNECTIONS TO ADJACENT CRIPPLE LAND AND POTENTIAL CONNECTION TO ROGERS BRIDGE PARK.

RIVER CONNECTIONS: OVERLOOKS PROVIDED FOR CONNECTION TO RIVER

CONCESSIONS/RESTROOMS: 2 FACILITIES ADDED AT EACH END OF PARK

SITE AMENITIES: RIVER OVERLOOKS, PICNIC SHELTERS, PLAYGROUND.



This plan includes a separate pedestrian circulation system that provides a safe, pleasant walking route throughout the park. Tree plantings are added to along the walkways for shade. The proposed Chattahoochee River Greenway runs along the northern edge of the fields, 150' away from the Chattahoochee River, and provides a connection to the adjacent CRNRA property (Abbotts Bridge Unit), and eventually Rogers Bridge Park. The CRNRA property contains a boat launch, picnic facilities, and a walking trail along the river.

As stated in the Facilities Inventory, Scott Hudgens park has good facilities for the soccer players, but very poor facilities for the spectators. The master plan includes three separate river overlooks, two playgrounds, and picnic shelters to create an environment that is enjoyable for the parents, grandparents, and siblings of the players. Another simple, but much needed addition to the park is tree planting, which will provide shade for visitors.

The total number of game fields includes three U-19, four U-14, three U-10 and six U-8 fields. These fields provide opportunities for a wide range of age groups. A practice area is located between the eastern parking lot and River Green Parkway. The estimated cost for this plan is approximately \$6,062,978; this includes design fees and a 15% contingency. See Appendix B for a breakdown of costs.

Land acquisition is an important part of this plan. The 12 acre AT&T Golf Classic parcel and the western access point parcel are critical to the future of this park and should be acquired. While current joint use agreements on these two properties are working well, things could change if a different owner were to acquire these properties. An additional 18 acre undeveloped parcel in the southwest corner of the site is recommended for acquisition in order to provide space for additional active facilities such as tennis courts, a skate park, or multi-use fields.

W.P. Jones Park

The master plan for W.P. Jones Park maintains much of the passive character of the site while improving circulation, reorganizing minor park elements, and adding a small skate park facility. The tennis facility at the southern end of the site is in excellent condition and remains unchanged.

The facilities on the north side of the park have been reorganized to improve circulation and maximize recreation potential of the space. The park's northern entrance includes a reorganized parking lot adjacent to a new community center building. The new community building will replace the existing depot building which is to be relocated to the Railroad Museum. The new community building is roughly the same size as the depot building, and includes a back terrace for small outdoor gatherings.

A park road descends into the park, terminating at a parking lot and drop-off area. This new lot provides convenient parking for the playground, picnic area, and skate park. The existing restroom and picnic pavilion remain as they are, however the play structures, including the caboose, have been reorganize to maximize the informal play field. This flat, grassy field lies



within the floodplain of the adjacent creek and is defined by a 1/5 mile paved looping walkway. The field can be used for various lawn sports, including croquet, bocce ball, or Frisbee.

The skate park covers approximately 10,000 square feet, which is the minimum size recommended for a skate facility. Although small, this facility should provide ample space for the local community to skate. A larger skate facility within W.P. Jones Park would dominate the park and destroy its passive character.

The large natural area on the eastern half of the site has been preserved as a passive conservation area. Interpretive nature trails wind through this end of the park, running along the creek and ascending the steep hillsides which overlook the creek. Interpretive signage regarding the local riparian, floodplain, and upland forest plant communities is included within the park. The removal of invasive vegetation, supplemental planting of native vegetation, and mulched trail surfaces will enhance the aesthetics of these trails. Stream bank erosion is another issue which should be addressed within the natural area. The existing stream bank is in poor condition and will only get worse if restoration activities do not occur. Stream bank restoration provides another opportunity for interpretation along the trail.

W.P. Jones is a Neighborhood Park, and should therefore be easily accessible to the surrounding community. This plan includes clearly defined trail connections to the adjacent residential communities, office park, and public library. The plan includes an outdoor classroom adjacent to the library, overlooking the park. The connection to the library is a great opportunity which needs to be taken advantage of. It is recommended that the city acquire additional property along the stream corridor east of the park. This corridor is undeveloped floodplain forest and runs between several large residential neighborhoods. The acquisition of this property is a great opportunity to add trail facilities to the park and to provide additional pedestrian connections into the park. The estimated cost for this plan is approximately \$2,136,449; this includes design fees and a 15% contingency, but does not include costs associated land acquisition or future facilities associated with land acquisition. See Appendix B for a breakdown of costs.

FACILITY PHASING RECOMMENDATIONS

This recreation planning process has revealed a clear need for additional parks and recreation facilities to be developed over the next 10 years. General and specific recommendations have been made for the development of future parks and greenways, the improvement of existing park facilities, and the acquisition of park land. The following is a phasing strategy which prioritizes the proposed park and greenway improvements discussed in this chapter. The prioritized list is broken into short term priorities and long term priorities.

Short Term Priorities

Construction of Rogers Bridge Park as shown on proposed master plan:	\$3,270,000
New Community Building to replace depot building at W.P. Jones Park:	\$687,000
Addition of 2nd Restroom Building at Scott Hudgens Park:	\$280,000
Phase One Chattahoochee River Greenway (Scott Hudgens Segment):	\$1,700,000
Construction of Taylor Park playground:	\$260,000



Park Improvement Subtotal = \$6,197,000
Land Acquisition for existing parks as available*=\$4,000,000

Mid-Term Priorities

Phase Two Chattahoochee River Greenway (Scott Hudgens to Rogers Bridge): \$4,300,000
Formalizing vehicular circulation at Scott Hudgens Park: \$300,000
Improve playground parking and trails at W.P. Jones Park: \$1,134,000
Construction of pedestrian amenity areas at Scott Hudgens Park: \$500,000

Park Improvement Subtotal = \$6,234,000
Land Acquisition for future parks& greenways*=\$1,300,000

Long Term Priorities

Development of Central City Bikeway: \$4,433,000
Development of Craig Drive Neighborhood Park: \$500,000
Development of Church Street Neighborhood Park: \$521,000
Development of River Mill Neighborhood Park: \$500,000
Completion of W.P. Jones Park improvements as shown on master plan. \$315,000

Subtotal = \$6,269,000

*costs for land acquisition based upon 2007 assessed values obtained from web site for
Gwinnett County



SURVEY RESULTS

1.) How often does someone in your family use City of Duluth park facilities?

	Weekly	Monthly	Annually	N/A	Response Count
Rogers Bridge Park	3.8% (3)	15.0% (12)	22.5% (18)	58.8% (47)	80
Scott Hudgens Park	13.3% (10)	6.7% (5)	26.7% (20)	53.3% (40)	75
W.P. Jones Park	14.1% (11)	19.2% (15)	30.8% (24)	35.9% (28)	78
Taylor Memorial Park	11.3% (8)	26.8% (19)	14.1% (10)	47.9% (34)	71
Church Street Park	0.0% (0)	3.1% (2)	4.7% (3)	92.2% (59)	64
Bunten Road Park	54.5% (60)	22.7% (25)	10.0% (11)	12.7% (14)	110
answered question					122
skipped question					2

2.) Who in your family uses Duluth City Parks and for what purpose? (i.e. Scott Hudgens- 12 yr. old female-soccer league)

	Response Percent	Response Count
view Rogers Bridge Park	25.7%	28
view Scott Hudgens Park	24.8%	27
view W.P. Jones Park	33.9%	37



view	Taylor Memorial Park	27.5%	30
view	Church Street Park	9.2%	10
view	Bunten Road Park	84.4%	92
answered question			109
skipped question			15

3.) How often does your family use Gwinnett County park facilities?		
	Response Percent	Response Count
Weekly	38.0%	46
Monthly	30.6%	37
Annually	12.4%	15
N/A	19.0%	23
answered question		121
skipped question		3

4.) Who in your family uses which Gwinnett County parks and for what purpose? (Ronald Reagan-15yr. old son-skating)		
		Response Count
view		79
answered question		79
skipped question		45



5.) How do you get TO the following City of Duluth parks?

	Walk	Bicycle	Drive	Public Transportation	N/A	Response Count
Rogers Bridge Park	4.4% (4)	0.0% (0)	41.8% (38)	0.0% (0)	53.8% (49)	91
Scott Hudgens Park	0.0% (0)	0.0% (0)	48.8% (41)	0.0% (0)	51.2% (43)	84
W.P. Jones Park	2.3% (2)	0.0% (0)	62.1% (54)	0.0% (0)	35.6% (31)	87
Taylor Memorial Park	5.1% (4)	5.1% (4)	39.7% (31)	0.0% (0)	50.0% (39)	78
Church Street Park	1.3% (1)	0.0% (0)	18.2% (14)	0.0% (0)	80.5% (62)	77
Bunten Road Park	17.3% (19)	2.7% (3)	67.3% (74)	0.0% (0)	12.7% (14)	110
answered question						122
skipped question						2

6.) Would you be likely to walk or ride a bike if safe routes were available to the parks?

		Response Percent	Response Count
Yes		17.4%	21
No		23.1%	28
view	If yes, which parks?	59.5%	72
answered question			121
skipped question			3



7.) Which City of Duluth Parks are closest to your house?

	Response Percent	Response Count
Rogers Bridge Park	33.6%	40
Scott Hudgens Park	13.5%	16
W.P. Jones Park	24.4%	29
Taylor Memorial Park	19.3%	23
Church Street Park	7.6%	9
Bunten Road Park	64.7%	77
answered question		119
skipped question		5

8.) How do you access information related to City of Duluth park programs, schedules and facilities?

	Response Percent	Response Count
City web sites	52.9%	64
Word of mouth	43.0%	52
Newspaper	15.7%	19
City of Duluth newsletter	64.5%	78
view Other (please specify)	9.9%	12
answered question		121



skipped question	3
------------------	---

9.) What is the primary park and recreation activity in which each member of your family participates or would like to participate? (family-picnicking, 12 yr old female-soccer, 45 yr. old male-running, 3yr old female-playground, 16 yr.old male-baseball, etc.)		Response Count
	view	98
answered question		98
skipped question		26

10.) How would you rate the current recreational facilities provided by the City of Duluth?					
	Above Average	Average	Below Average	No Opinion	Response Count
Rogers Bridge Park	1.1% (1)	18.1% (17)	20.2% (19)	60.6% (57)	94
Scott Hudgens Park	6.7% (6)	27.8% (25)	10.0% (9)	55.6% (50)	90
W.P. Jones Park	17.4% (16)	39.1% (36)	6.5% (6)	37.0% (34)	92
Taylor Memorial Park	17.6% (16)	15.4% (14)	12.1% (11)	54.9% (50)	91
Church Street Park	1.2% (1)	10.5% (9)	4.7% (4)	83.7% (72)	86
Bunten Road Park	57.5% (65)	30.1% (34)	3.5% (4)	8.8% (10)	113
answered question					119
skipped question					5



11.) Please indicate your feelings about the number of recreational facilities provided by the City of Duluth.

	Have Enough	Need More	Need Less	No Opinion	Response Count
Baseball Fields	45.8% (49)	14.0% (15)	0.0% (0)	40.2% (43)	107
Basketball Courts	24.5% (26)	32.1% (34)	0.0% (0)	43.4% (46)	106
Bicycle Paths	11.5% (13)	69.9% (79)	0.9% (1)	17.7% (20)	113
Community Centers	30.1% (31)	34.0% (35)	2.9% (3)	33.0% (34)	103
Dog Parks	12.6% (13)	46.6% (48)	4.9% (5)	35.9% (37)	103
Football Fields	26.7% (28)	16.2% (17)	4.8% (5)	52.4% (55)	105
Group Shelters	15.1% (16)	34.9% (37)	0.9% (1)	49.1% (52)	106
Mini Outdoor Railroad	6.6% (7)	34.0% (36)	7.5% (8)	51.9% (55)	106
Natural Areas	11.1% (12)	68.5% (74)	0.9% (1)	19.4% (21)	108
Nature Trails	7.3% (8)	78.2% (86)	0.0% (0)	14.5% (16)	110
Open Play Areas	22.6% (24)	45.3% (48)	0.9% (1)	31.1% (33)	106
Paved Walking/Jogging Trails	15.3% (17)	65.8% (73)	0.0% (0)	18.9% (21)	111
Picnic Areas	20.0% (21)	56.2% (59)	0.0% (0)	23.8% (25)	105
Playgrounds	31.4% (33)	38.1% (40)	1.0% (1)	29.5% (31)	105
Racquetball/Handball Courts	15.8% (16)	28.7% (29)	3.0% (3)	52.5% (53)	101
Sidewalks	14.2% (15)	66.0% (70)	0.0% (0)	19.8% (21)	106
Skate Parks	10.5% (11)	27.6% (29)	9.5% (10)	52.4% (55)	105
Soccer Fields	36.4% (39)	13.1% (14)	6.5% (7)	43.9% (47)	107
Softball Fields	37.9% (39)	16.5% (17)	2.9% (3)	42.7% (44)	103
Tennis Courts	34.3% (36)	26.7% (28)	1.0% (1)	38.1% (40)	105
Volleyball Courts	14.7% (15)	30.4% (31)	1.0% (1)	53.9% (55)	102
answered question					122
skipped question					2



12.) Please list any other facilities that you believe should be added to the Duluth City Parks.

	Response Count
 view	73
answered question	73
skipped question	51

13.) What type of themed playground or equipment would you like to see incorporated into the Duluth City Parks?

	Response Count
 view	54
answered question	54
skipped question	70

14.) Would you be interested in seeing a series of trails that would link the schools, recreation areas and library together?

	Response Percent	Response Count
Yes 	70.8%	85
No 	9.2%	11
No Opinion 	20.0%	24
answered question		120
skipped question		4

15.) In your opinion, what is the most important need regarding city parks in Duluth?



	Very Important	Slightly Important	Don't Care	Not Too Important	Not At All Important	Rating Average	Response Count
More Facilities	40.2% (43)	37.4% (40)	13.1% (14)	8.4% (9)	0.9% (1)	1.93	107
More Programs	31.7% (33)	43.3% (45)	20.2% (21)	4.8% (5)	0.0% (0)	1.98	104
Buying More Land for Future Needs	55.3% (63)	21.9% (25)	19.3% (22)	2.6% (3)	0.9% (1)	1.72	114
Upgrading Existing Facilities	53.0% (62)	30.8% (36)	12.8% (15)	3.4% (4)	0.0% (0)	1.67	117
answered question							121
skipped question							3

16.) How long have you lived in Duluth?		Response Percent	Response Count
Less than 6 Months		0.8%	1
6-12 Months		4.1%	5
1-5 Years		15.7%	19
More than 5 Years		63.6%	77
I do not live in Duluth		15.7%	19
answered question			121
skipped question			3

17.) How many people in each age group live in your household?
--




	0	1	2	3	4	5	6	7	8+	Response Count
0-5 Years Old	44.7% (21)	34.0% (16)	19.1% (9)	0.0% (0)	2.1% (1)	0.0% (0)	0.0% (0)	0.0% (0)	0.0% (0)	47
6-12 Years Old	43.6% (17)	28.2% (11)	25.6% (10)	2.6% (1)	0.0% (0)	0.0% (0)	0.0% (0)	0.0% (0)	0.0% (0)	39
13-18 Years Old	45.9% (17)	40.5% (15)	13.5% (5)	0.0% (0)	0.0% (0)	0.0% (0)	0.0% (0)	0.0% (0)	0.0% (0)	37
19-25 Years Old	43.2% (16)	37.8% (14)	16.2% (6)	2.7% (1)	0.0% (0)	0.0% (0)	0.0% (0)	0.0% (0)	0.0% (0)	37
26-50 Years Old	10.5% (8)	18.4% (14)	68.4% (52)	1.3% (1)	1.3% (1)	0.0% (0)	0.0% (0)	0.0% (0)	0.0% (0)	76
50-64 Years Old	22.9% (11)	22.9% (11)	54.2% (26)	0.0% (0)	0.0% (0)	0.0% (0)	0.0% (0)	0.0% (0)	0.0% (0)	48
65+ Years Old	35.3% (12)	50.0% (17)	14.7% (5)	0.0% (0)	0.0% (0)	0.0% (0)	0.0% (0)	0.0% (0)	0.0% (0)	34
answered question										121
skipped question										3

18.) Which of the following best describes your annual household income?				Response Percent	Response Count
Less than \$25,000				0.0%	0
\$25,000 - \$49,999				13.5%	14
\$50,000 - \$74,999				26.0%	27
\$75,000 - \$99,999				20.2%	21
Over \$100,000				40.4%	42
answered question					104



skipped question	20
------------------	----

19.) In which ethnic group do you most closely associate yourself?		
	Response Percent	Response Count
African American	4.4%	5
Asian	0.9%	1
Hispanic	0.9%	1
White	89.5%	102
 view Other (please specify)	4.4%	5
answered question		114
skipped question		10

Question 2 Roger's Bridge Park Detail

1. Parents go with Neighbors to walk dogs
2. Playground, Walking
3. Children, play
4. Picnics, relaxing
5. Family Recreation
6. River Access
7. Self and Wife
8. Me and my husband
9. Walking
10. Go to River, Husband
11. Visit to check on amenities. So far doesn't have any access to river.
12. Two Adults- Destination for walking
13. Two Adults and 5 yr. old and 3 yr. old
14. Family-Walking
15. N/A
16. Walking
17. N/A
18. 5 yr. old female and 2.5 yr old male; Kite-Flying, playground
19. Never been
20. No one



21. Walking
22. Adult
23. Family for Recreation
24. Me....my wife....love the River
25. Self
26. Roger's Bridge Park – a mid-50's age couple want a mini railroad in the park
27. Husband and Wife if you add train tracks to the park
28. Wife and Husband; walking

Question 2 Scott Hudgens Park

1. 12 yr. old boy's soccer league
2. U11 Boy's Soccer Games
3. 4th of July Fireworks
4. Watch Soccer and Fireworks
5. 4th of July
6. Adult male
7. July 4th
8. 9 yr old / 7 yr. old Notre Dame Academy Students
9. My husband, my 1 yr. old son and myself. Fountain, picnicking, and walking
10. Family, soccer
11. 4 yr. old female and 45 yr old female, kite flying
12. N/A
13. Mather and I walk dogs
14. Grandson plays there when visiting relatives
15. Children for soccer and family for 4th of July Celebration
16. N/A
17. 16 yr. old female
18. July 4th
19. Soccer League
20. Running
21. Family – 4th of July
22. July 4th
23. 50 yr. old male for soccer
24. Teenager
25. Me...my wife....walking, bicycling
26. Self
27. 4th of July

Question 2 W.P. Jones Park

1. Watch Friends play ALTA junior tennis matches
2. 2. Playground, creek, hiking trail, 4 & 7 yr. olds and mom and dad. Grill for Baseball and other sports activities
3. Tennis Day Camp. 6 yr. olds
4. Grandson
5. Lunch, Picnic
6. Meetings at Pavilions, kids play
7. Teenage daughter
8. Never
9. Whole family for picnics. 3 and 4 yr. olds



10. My husband, my 1 yr. old son and myself for playground and picnicking
11. 6, 3 and 1 yr. olds. Love the train, creek and path around playground.
12. 1 yr. old for recreation
13. Playground
14. Playground
15. 55 yr. old female, church picnic
16. 18 months – 6 yr. old girls for Playground
17. 4 yr. old female – playground and picnic. 14 yr. old male exploring. 45 yr. old female – picnicking
18. Son- ALTA team matches
19. Preschooler- playground
20. Myself – tennis
21. Myself – tennis
22. Children under 10 yrs. Old
23. 6 and 10 yr. old – Playground
24. N/A
25. Playground for 4 yr. old / walking path / Tennis Courts when available
26. Tennis
27. Walking
28. Playground
29. N/A
30. 5 yr. old female and 2.5 yr. old male – hiking and playground
31. It's been a long time
32. Playground
33. No one
34. Walking trails for Whole Family
35. 4 year old – playground
36. Adult
37. Tennis, Nature Trails

Question 2 Taylor Memorial Park

1. Whole family for festivals
2. Picnics – family
3. Whole Family - Duluth Fall Festival, park events, bike to park, relax
4. Concerts and City Approved Activities
5. 73 yr. old female and 80 yr. old male. Weekly or more for various events
6. Grandchildren – fountain and soda shop
7. 15 yr. old male – friend gatherings, 50 yr. old parents – concerts and festivals
8. Everyone
9. Downtown Events
10. Don't know where it is.
11. 6, 3 and 1 yr. olds – Love Fountain. Did use playground until it closed for construction
12. City Events – family
13. 4 yr. old female; fountain and playground. 45 yr. old female – walking; 4 yr. old female, 14 yr. old male, 47 yr. old male, 45 yr. old female – summer movies
14. Whole Family
15. Everything
16. Preschooler – playground and fountain. Flicks on the Bricks and some Concerts
17. Just for Walking



18. N/A
19. Entire family off and on for just casual time or special events
20. Wife and I (25 yr. old) Picnics and Fall Festival
21. Walk / Picnic
22. Attend Concerts and Festivals
23. 5 yr. old female and 2.5 yr. male – playground
24. Fall Festival
25. Family – fall festival, memorial day
26. Walking
27. Family for Picnics
28. 4 yr. old – Playground
29. Adult
30. Downtown Shopping

Question 2 Church Street Park

1. Children – playground
2. Don't know where it is
3. Never
4. Playground
5. N/A
6. N/A
7. 5 yr. old female and 2.5 yr. old male – playground
8. Never Been
9. No one
10. N/A

Question 2 Bunten Road Park

1. Card playing
2. Playground / Walking Trail
3. Walking
4. Myself
5. 12 yr. old boy's basketball camp
6. Playground. 4 & 7 yr. old males camp in summer
7. Soccer, day camp and yoga classes
8. 73 yr. old female, monthly sewing workshops, senior lunches, annual poll worker elections, 80 yr. old male participates in periodic events and pancake breakfast
9. Grandson
10. Entire family uses park almost daily
11. Watch sports, nice walking trail
12. Senior Citizen Luncheons
13. Senior Citizen
14. Older women – cards; luncheons
15. 45 yr. old male – walking dogs
16. Canasta
17. Son – Walking trail, me- Senior Luncheons and Bingo
18. Senior Luncheons and Bingo
19. Programs, walking and running



20. Myself
21. Play Cards
22. Cards
23. Senior Yoga, Baseball, Walking
24. Senior Baseball, Walking Trail, Yoga
25. 15 yr. old male – Basketball, Soccer
26. 16 yr. old Male – Baseball, Basketball
27. 15 yr. old – Running, Father – Walking
28. Walking and Tennis
29. Teenage Daughter
30. Walking Trails
31. 9 yr. old and 7 yr old, Baseball and Softball
32. I played Tennis
33. Buntin Road Park – Classes and Playground
34. 6, 3 and 1 yr. old use playground and adults use for waking kids in stroller
35. Family and Soccer
36. 1 and 5 yr. old – Recreation
37. Playground
38. Adults running on track
39. Playground
40. 2 yr. old – F swing
41. Girls, 18 months and 6 yrs. Old – playground
42. 2 Adults and 5 and 3 yr. olds
43. Family – Dog Walking
44. 4 yr. old female – playground, biking, viewing baseball games; 45 yr. old female – aerobics classes, walking and viewing baseball games; 14 yr old male – karate
45. Son – ALTA team practice
46. 58 yr. old tennis player and walker
47. Family – Playground
48. Preschooler – play and summer camp
49. Myself – tennis, walking
50. Myself – tennis, walking
51. Children under 10 yrs old – Baseball, playground, track
52. The whole Family
53. Running
54. 6 and 10 yr. old – Karate, both will be attending camp this summer
55. N/A
56. Walking Trail – 59 yr. Old
57. Mother and I meetings
58. Female – Yoga
59. Adults – Walking trail, 3 and 4 yr olds – playground
60. Bike and Walking Trail
61. Dog Walking, Tennis
62. Walking, Jogging, Tennis
63. Self – Jogging Trails, Events at buildings, Children's Soccer
64. Mother, Step-Father – Walking
65. Wife and I (25 yrs. Old) – Walking
66. Walking / Baseball / Basketball
67. N/A
68. Recreation Baseball and Football
69. 16 yr. old female – soccer leagues



70. 5 yr. old female and 2.5 yr old male – classes, hiking and playground
71. Senior walking
72. Mother goes every week to play cards
73. 14 yr. old soccer, father – walking
74. Family
75. Basketball Try-Outs
76. 10 yr. old – Basketball
77. 26 yr old – Walking and Running
78. Dog Walks
79. Myself – Paved Trail
80. Walking and Biking Trail
81. Social – Leisure Activities
82. Running and Biking
83. 8 yr. old son and 5 yr. old daughter
84. Walking
85. Pavilion Rentals for 14 yr. old scout party
86. Playground / Walking Path
87. Nature Trail
88. 50 yr. old Female – Walking
89. Teenager
90. Walking Trail
91. Baseball
92. Tennis, Nature Trails

Question 4 Who in your family uses Gwinnett County Parks

1. Walking - The Whole Family
2. I Bring Grandchildren to the Park
3. Shorty Howell – 12 yr. old boy – football – Suwanee – family Picnics
4. Pinckney Ville - Baseball 7yr. old Shorty Howell - Playground & Feed ducks and ride bikes
5. 3 yr. old – playground
6. Whole family - 2 children
7. U-11 Boys Soccer Practice - George Pierce U-8 Girls Soccer Practice and Games - George Pierce
8. Don't use
9. no one on a regular basis
10. myself, my daughter, her children
11. 40 yr. old female walking dogs
12. myself - sr. luncheon
13. senior luncheon and activities
14. Bunten Road - my wife and i - running/walking; sports programs
15. I play senior tennis
16. walking, play cards, lunch
17. Mom – cards
18. walking dog
19. Shorty Howell- baseball, walking trail
20. Shorty Howell, Baseball; Walking Trail
21. 32 adult male - for a few 4th july and summer out door concerts.
22. family – recreation
23. 15 year old daughter-running father-walking
24. Mountain park--walking, 2 adults, playground--2 yr old



25. grandson baseball
26. Lowell and Linda - Rogers Bridge Park
27. mom walk
28. Whole family to Pinckneyville dog park every month or so. Will be playing flag football at Shorty Howell in fall. Hike the Suwannee greenway 3-4 x yr. Visit Collins Hill, George Pierce for softball games.
29. George Pierce-playground Pinckneyville-playground, 4 year old
30. 6, 3, 1 yr old and Mom go to Gwinnett County parks weekly to use playgrounds and swim facilities.
31. Suwannee playtown-recreation-1 & 5 yr old Shorty Howell-recreation-1 & 5 yr.old
32. Mom and daughter, 5 years old, play grounds, walking, bike riding
33. Bunten – running
34. Mom and 2 boys, ages 2 and 4-- sometimes for walking, but mostly the playgrounds.
35. 55 yr. old female – walking
36. 3 daughters - 2 are 18mnths and other is 6yrs - playground and walking path
37. Whole family uses Bunten Rd. park for walking, playing, biking, playground. We used to sign up the kids for the indoor programs but, they no longer offer them. It would be nice to have a mommy and me class or dance, or music class for little ones again.
38. Bunten-entire family dog walking
39. Best Friends Park: 14 yr. old male (autistic)-summer camp & pool; 4 yr. old and 45 yr. old females-pool & water park. Collins Hill Aquatics Center & Bogan Park Aquatics Center: 4 yr. old female, 14 yr. old male and 45 yr. old female. Shorty Howell Park: 4 yr. old female with 45 yr. old female - playgrounds & baseball spectating. Jones Bridge Park: family picnic, water play in river, playground
40. 58 year old walker
41. My whole family goes to the Duluth town Green, ITS GREAT!!!! We go to the park for:-Fall Festival -Movies on the Green -A place to hang out -Go eat ice cream at the Soda Shop -Bike riding -Dog walking P.S. and yes I have done all of this at the same Park and man! The Duluth Town Green is still adding on. There getting a new Town Hall!
42. Parents and 14 month old daughter uses BRP weekly for it's outstanding play ground. Also use Rogers Bridge for walking
43. Suwannee Greenbelt biweekly for biking. McDaniel's Farm biweekly for biking. Shorty biweekly for biking and playing.
44. myself - tennis, walking, picnic
45. myself - tennis, walking, picnic
46. Shorty Howell - children under 10 years old - football, track, playground
47. John McCullum Running
48. I only use it for walking. And that is Taylor Park as I live on the Town Green.
49. Shorty Howell - 6 and 10 year olds baseball - Fall and Spring.
50. N/A
51. Five Forks - 27 female 31 male 3 dogs - dog park Pinkneyville Park - 27 female 31 male 3 dogs - dog park
52. Shorty Howell - Adult walking trail. 4 yr. old.- play area
53. Ronald Reagan/Five Forks- off leash DOG PARK!!!! Pikneyville- off leash DOG PARK!
54. Mom, Dad, Kids, Nieces, etc. walking, jogging, tennis.
55. Greg Whitlock - 38 years old - jogging, special events, relaxing near town green. Barbara Whitlock, 39 yrs old - wife- special events Andrew McWilliams - 19 years old, son, special events, soccer, football, Frisbee, etc. Olivia Whitlock, 14 months, daughter, any open place to spread her legs and burn off energy.
56. female, walking / bike riding
57. Shorty Howell - watch sports
58. Me and my husband use Taylor Park--we don't go to the other facilities.
59. Pickneyville 47 yr old mom uses for skateboarding and 16 yr old skateboarding



60. Shorty Howell to feed the ducks
61. Bunten Daughter teen soccer father walking on the path Scott Hudgens Soccer practice
62. Bunten Rd. walking trail children - softball/soccer
63. Shortey Howell - 11 year old son football and play Shortey Howell - I walk 3-4 times per week
Pickneyville - I walk or each lunch 2-3 times/month Rhodes Jordan - 11 year old swimming during summer
64. Jahir & Jada Joyner & family Shorty Howell for playground and to feed the ducks.
65. My self and my fiancé for exercise and recreation.
66. Suwanee Creek Park – Running
67. Sons(12 and 8) daughter(5)
68. Suwannee greenway...walking
69. Whole family for special events and swimming
70. 2 year old playground 4 year old playground mom walking-used to do stroller strides
71. Bob-50 year old – soccer
72. Jones Bridge Park - Playground, fishing McDaniel Farm Park
73. George Pierce – trails
74. Rogers Bridge Park the Family for recreation
75. see above
76. Rogers Bridge -self for relaxation
77. We go to your park when the North Georgia Live Steamer run trains
78. shorty howell, baseball and softball
79. Wherever tennis matches are held. Senior

Question 6 Would you be likely to walk or ride a bike if safe routes were provided? If yes, which parks?

1. Bunten
2. Bunten, taylor, W.P. Jones, Scott Hudgens, Rogers Bridge
3. W.P. Jones
4. Bike to Bunten road
5. scott hudgens and Rogers Bridge
6. Rogers Bridge Park
7. Bunten Road, Church Street
8. Bunten Rd.
9. Bunten Road
10. Bunten Road
11. bunten road
12. shorty howell, bunten road
13. Shorty Howell; Bunten Road
14. Bunten Road, Rogers Bridge, Taylor Park
15. Bunten Road Park
16. Bunten Road Park, W.P. Jones Park, Rogers Bridge park
17. Rogers Bridge
18. Rogers Bridge
19. Taylor, Hudgens and WP Jones
20. Rogers Bridge Park
21. Rogers Bridge Park
22. WP Jones, Town Green, Rogers Bridge, River Green
23. W.P. Jones



24. Rogers Bridge, Taylor, Bunten
25. Bunten Road
26. all of them
27. Bunten is the closest. My kids are a little young, but down the road, it would be nice.
28. Any
29. Bunten
30. Bunten, maybe Rogers Bridge (have to cross 2 major roads to get there).
31. All, safer passage would encourage me to utilize the parks. At this time, I see little value due to the underdeveloped nature.
32. Taylor - we need a sidewalk along Hwy 120 east of Buford Hwy.
33. Rogers Bridge
34. all
35. all of them
36. Bunten Road Park
37. Any! Bunten, Taylor, and Jones are the closest to us.
38. W.P. Jones Park, Bunten Road Park
39. Bunten Road park
40. Bunten Road
41. All
42. Bunten Road
43. Scott Hudgens, WP Jones, Taylor
44. Bunton or WP Jones
45. Bunten, rogers bridge
46. Bunten
47. Bunten, Rogers Bridge, Scott Hudgens, Taylor
48. Bunten Road
49. Taylor and Bunten Road
50. Taylor Memorial Park
51. Bunten Road Rogers Bridge Taylor Park
52. Bunten Road
53. All of them!
54. Bunten Road
55. Bunten, Rodgers Bridge, Taylor
56. Bunten Rd.
57. All
58. Bunten, Rogers Bridge, Scott Hudgens
59. Bunten Road Park and George Pierce Park
60. Bunter, Taylor, Rogers Bridge
61. all
62. W.P. Jones
63. Bunten Road
64. Rogerss bridge Bunten road
65. Bunten, Rogers Bridge, Hudgens
66. Taylor / Rogers Bridge
67. Rogers Bridge Park
68. rogers bridge
69. Rogers Bridge
70. Rogers Bridge Park
71. Rogers bridge taylor bunten road
72. bunten, rogers bridge



Question 8 How do you access information on Duluth Parks and Recreation, other

1. fall festival committee info.
2. Bunten Road newsletter
3. flyers at the community building
4. Bunten road luncheon
5. park flyers
6. park flyers
7. Sports signup signs at Bunten rd park entrance
8. email blast.
9. Soda Shop Deli and Dairy Bar Manager
10. Pick up a schedule at the facility
11. Our NGLS club announces by email and at meetings when we have activities in the park.
12. North Ga Live Steamers

Question 9 What is the primary parks and recreation activity you participate?

1. bridge
2. 50+ female walking and biking; family biking if it were available
3. playground / walking trail
4. Walking - 40's and up
5. family picnics
6. 12 yr. old boy - soccer 45 yr. old female - running 45 yr. old female and male - walking family – picnics
7. playground, picnics, hiking, kite flying, model airplane flying
8. Bunten Road - walking trails 45 yr. old; yoga
9. hiking, fishing
10. Would be interested in more activities at the river at Rogers Bridge Park.
11. Dad - 43 yrs Running, Soccer Mom - 38 yrs Walking, Biking Boy - 11 yrs Soccer, Biking, Playground Girl - 8 yrs Soccer, Biking, Playground skateboarding area would be great
12. walking
13. none
14. Bunten Road Park - Sr. luncheon, yoga, and exercise classes
15. Bunten Park – cards
16. 40+ yr old male/female - outdoor (sand) volleyball
17. Senior Tennis - Mondays, Wednesdays, Fridays
18. George Pierre Bunten Road
19. Bunten
20. cards walking dog
21. 54 year old female - yoga, walking 56 year old male - walking 21 year old male – baseball
22. 54 yr. old female - yoga, walking 56 yr. old male - walking 21 yr. old male – baseball
23. 30 yr old male - basketball & running
24. ??
25. out door concerts 4th july events miniature trains
26. 15 yr old male - soccer, basketball 50 yr old female, jogging trails 50 yr old male + female - concerts, festivals
27. family-picnicking, 16 yr old male-baseball, 16 yr old basketball, dog walking
28. running and walking
29. You mean family picnicking
30. 47 male running 7 year old tennis



31. family - events and just enjoying nice days, picnics, walks, runs teenage daughter outside play with friends, bicycle,
32. Railroads have been talked about if they had a place to operate
33. Rogers Bridge Park, The Little Trains" "Mini Trains".
34. walking
35. 9 yr old Softball, 8 yr old baseball
36. family - picnicking & playground
37. family activities
38. Family-picnicking 37 year old female - walking 37 year old male - walking 6 year old female - playgrounds, dance 3 year old female - playgrounds, soccer 1 year old male - playgrounds
39. soccer, walking
40. Playground-1 & 5 year old (male & female) Walking trails-36 yr.old female
41. mom and daughter play ground
42. family bicycling
43. Again, 2 and 4 year old boys- primarily playground, but also soccer, tee ball, camps 31 female- walking/running 37 male- walking/running
44. 55 yr. old female - walking & picnics
45. family - picnicking and walking 6yr old female playground 18mnth old females playground
46. We would like to have indoor music, mommy and me, dance, or whatever classes available for little ones again. (5 yr old female, 3 yr old male) A Frisbee area would be nice. (family) Right now we mostly use the playground and walking path. Sometimes we take our bikes. (Family)
47. dog walking
48. Adult sports primarily soccer and softball. We would like to have a dog park for socializing and exercising our dog. Additionally, we would enjoy an annual community picnic with sports and games like three legged races, softball, egg tosses, dodge ball and other similar games that are commonly played in company picnics that includes adults and children. It would be nice if the events encourage competition and sportsmanship for families and neighborhoods. For example the neighborhood with the most total points from all participants will win something for their neighborhood.
49. family: picnic by the river & summer movies 4 yr. old female-playground & bike riding 14 yr. old male-special needs volleyball or baseball 45 yr. old female-aerobics classes, walking, volleyball
50. Sons - 14 and 12 - Tennis
51. 58 year old tennis player and walker
52. The Super Sweet Soda Shop
53. 14 month old play ground, 34 yr old parents walking and watching. will get involved in BRP sports later when child older
54. Preschooler: Playground and scootering on loop. Mom: Biking Dad: Biking
55. family: Walking; Running; Bicycling; Dog play/exercising
56. tennis, walking, picnic
57. Walking or running
58. My children are grown and gone.
59. 10 year old male - baseball, skating 6 year old male - baseball, soccer 41 year old female - running 42 year old male - running
60. Sports, walking and relaxing.
61. 59 yr-old female - walking trails
62. dog park, walking trails
63. dog walking, watching little leaguers
64. Yoga
65. Walking, hiking and dog park activities
66. adult - walking trail
67. Mom, dad & kids - bike riding trails, picnicking, bbq grills, tennis, watching spectator sports. Mom & Dad - walking 4 yr old - playground, karate, team sports



68. Dog walking/off leash Dog Park 26 female, 32 male
69. Bunten - walking/jogging Taylor - picnicking, special events
70. Basketball league or Baseball league, too old to play but to coach a team. Or start an adult basketball league
71. 48 yr old male – walking
72. Picnicking; attending concerts, events
73. Rec baseball and Football
74. 47 yr old female - skateboarding 16 yr old female - soccer & skateboarding 47 yr old male -bicycle riding
75. family biking/hiking
76. senior walking
77. Family relaxing, walking the dog, picnics
78. Same as above
79. Bunten Road picnicking walking trails sports
80. family picnicking, 11 year old male football, 43 year old female walking; 11 year old male playing. Basketball would be nice!
81. skateboarding and swimming
82. running and walking
83. Dog walking, bike riding
84. Walking is the primary one currently. Would like to do a dance class or play ping pong, billiards.
85. baseball
86. female/male walking
87. family walking on trails; special events
88. 2 year old playground 4 year old playground family walk
89. 50 year old male soccer 50 year old female soccer 25 year old male soccer Frisbee 21 year old female soccer
90. 4 yr old male – playground
91. teenager - trails, gym
92. family picnicking....walking...bike trails....have heard about "little trains" you can RIDE going into one of Duluth parks....that would be awesome ! a great way to see the park(s)
93. family picnics/relaxation
94. Family picnicking, and 58 yr old male and 56 yr old female walking. We hope to get our 7.5 gauge mini railroad track added to the park.
95. model railroading
96. Outdoor railroad track through the park at Rogers Bridge Park for running 7 1/2 in gauge trains such as you had July 3
97. bunten road, baseball
98. Senior tennis

Question 12 List any other facilities which should be in Duluth City Park.

1. little league baseball practice and playing field
2. Bike paths, water fountains with pet access, river access and frontage
3. Tennis off Northside and miniature golf off northside. Boating (canoe / kayak) boat rental. Swimming
4. Canoe rentals at Rogers Bridge Park, trails along the river
5. SCOTT HUDGEN NEEDS BATHROOMS !! AND LIGHTS ! BUNTEN ROAD SOCCER FIELDS NEED LIGHTS, TOO THANKS !
6. swimming



7. Sand Volleyball courts
8. Afternoon Bridge
9. There is a lack of basketball courts within the city. I have recently moved here and have yet find a court at any park I've been to.
10. Miniature Trains at Rogers Bridge Park
11. Miniature railroads facility need to be added. Would like to see more green grass and less developed structures.
12. Pool/water park - especially since the Duluth High doesn't even have one.
13. perhaps a botanical nature garden
14. Swimming Pool
15. THE SMALL TRAINS
16. more exercise facilities and classes for older adults who still work
17. The Little Trains" or "Mini Trains". Rogers Bridge Park
18. Mini Trains at Rogers Bridge Park More bicycle paths at all parks
19. little trains
20. little steam train
21. Rogers bridge needs more amenities, nature trail, access to the river, bathrooms. Bunten Rd. needs another group picnic shelter. Whole city needs better access to parks via sidewalks on all surface roads. Scott Hudgens needs bathrooms, playground, group picnic shelter, nature trail, access to the river. Town Green was left off this survey. It needs a real public bathroom! and group picnic shelter. Also handicap access should also be kept in mind when designing nature trails and playgrounds.
22. Swimming facilities for residents
23. Need public bathrooms at Taylor Park, with changing area to get in/out of bathing suit when using the fountain.
24. bathrooms are desperately needed at parks
25. Swimming Pools
26. Just a note to what is above... we have lots of things, but they seem to be outdated. Improvement of things-- like playgrounds, etc is preferred rather than adding new ones.
27. Music concerts from local groups. Seniors group activities.
28. bathrooms!!
29. activities/programs for toddlers activities/programs (during the day) for stay-at-home moms (Bunten rec activities during the week mornings are all senior related)
30. All parks should have easy access bathrooms, lights, paved parking. It should be easy to get to and I should feel safe to park and take my young family. Rogers Bridge is so dark and isolated I would not go there without my husband. There is really nothing there to do and right now, not much purpose in going. We would like to see improvements made.
31. It would be nice if the dog park is separated by size i.e. large and small.
32. Playground returned to the Town Green in Taylor Park. Public pool - for those of us that live in the "old town", without subdivision amenities. Please do not follow in Suwannee's footsteps with the "Greenways" idea. It isn't fair to private property owners and isn't necessary for a quality community.
33. A Videogaming Center or Arcade in the Taylor Memorial Town Green or what everyone else calls in Duluth the Duluth Town Green
34. more fishing lakes
35. A pool.
36. Dog play/exercise areas.
37. pool and/or aquatic center
38. We could really use a large pool facility like Milton Park
39. Decent bathrooms and not Job Johnnies. I have been out to Suwannee and seen their nice bathroom facilities.
40. Swimming facilities
41. Garden areas



42. We need swimming pool facilities
43. dog walking areas where you don't have to pick up your dogs' poop ... gold fish ponds ... walkways that go over rather than cross the streets, street entertainers and artists, all parks should have concession stands ... with healthy food/drink options, not just soda and candy ... go cart trail ... more concerts, storytelling/poem readings
44. Rope Wall Yoga
45. More interested in walking/hiking trails and dog park areas in as many parks as possible.
46. Fitness facilities
47. Pool near south end of town that offers water aerobics, swim lessons private and group
48. 1. More Doggie off leash areas! Small and large dogs areas with water fountains for humans and dogs with fun dog playgrounds. 2. Agility course/run for dogs. 3. More walking trails in woods/nature, not just around the baseball fields...
49. Water park facility or community pool with water slides (like Mountain Park). Skate park would remove the teens from our downtown areas Playground areas need open slides and infant swings More public bathrooms I like the idea of the gym at Bunten park, but the hours are very limited.
50. Use of the Chattahoochee River with a place you can put in a canoe, kayak, etc.
51. Scott Hudgins needs permanent restroom facilities and a concession area. Definitely need a skateboard park. Somewhere for the teenagers to gather besides going to the malls. Duluth needs to check out the skateboard park that is being built in Dekalb County, Brookrun (Dunwoody area).
52. Greenways!
53. indoor swimming pools
54. List above is good
55. Concessions for soccer The center at Bunten Road is really not "open" to the public unless you sign up to use it!
56. swimming pools
57. More water fountains. Better entry/exit ways. More shaded areas for reading/relaxing.
58. swimming pool, skating area and mini golf course :->
59. Dog parks with agility courses
60. A public pool with water play yard facility, and several wheelchair accessible playgrounds with platform swings, accessible ramps onto "boardwalks" for "monkey bars" to pull along in sitting, etc.
61. outdoor amphitheater near the river for educational presentations about the local area
62. City of Duluth should consider building a large pool available to entire city. The fountain in front of Festival center is an example of the need on a warm day.
63. pool
64. You should correct the spelling of believe in the approve questions.
65. Restrooms
66. more walking trails mainly along the river area restroom facilities at all parks picnic tables/grills in parks walking and biking trails that link the parks
67. swimming
68. Mini Outdoor Railroad
69. see question NINE
70. mini railroad workshop or club house.
71. model railroad
72. Mini Outdoor Railroad
73. Rest rooms

Question 13 What time of themed playground equipment would you like to see?

1. special needs
2. Fauna - schools on W.P. Jones bug - Schools on W.P. Jones Convert all maintenance to organize especially, new river



3. TRAINS ?
4. have enough
5. animals
6. Pirate theme
7. pool
8. N/A
9. Corresponding railroad related themes play area at Roger's Bridge.
10. I feel it is best to have a mix of activities to promote different interests and community relationships. Specifically, pair of baseball fields, a soccer field and an miniature railroad is a good thing. I do not support parks that are EXCLUSIVELY one thing. They tend not to be private. Exposure of differing interests helps to grow the community.
11. Perhaps a water park/indoor swimming pool
12. playground of recycled materials
13. Rogers Bridge Park--mini trains
14. Dog Walks
15. The Little Trains" or "Mini Trains". Rogers Bridge Park
16. Mini Trains at Rogers Bridge Park
17. -
18. Would love a treehouse themed playground or an adventure playground like the one in Suwanee.
19. More equipment for younger kids and more slides and ride on play equipment
20. 1. One that is community built. There is a company called Leather Associates that help to organize such undertakings (<http://www.leathersassociates.com/>). It would so wonderful to come to a playground that the whole community helped to build. When my sister help build a Leathers park in FL, Leathers did a great job going to the local schools and asking the kids for their ideas and then creating a park with those ideas. 2. Also, would love to see the playground nicely fenced in. 3. Some theme ideas are railroads in keeping with Duluth History, giant sandbox with "fossils" in it for the kids to discover.
21. I like the river theme since we are on the Chattahoochee or an early American theme since Duluth is an older city.
22. 1. Playground equipment geared for younger kids. 2. I like areas to be "blocked off" so the younger ones cannot escape. (What I mean by that is, Suwanee Playtown is a one entrance/exit park. And they have a large sandbox that I can put my son in and he cannot get out unless I lift him out. Not to say he is ever left unattended, but it is nice to sit with him and let him walk around freely without me having to be right behind him.) 3. Playgrounds are no good if they are unshaded. The equipment gets too hot if it is in the broiling sun. Shorty Howell park is great, but if it is too hot, the park goes to waste.
23. more swings
24. Kids love trains, etc... My concern is really 2 things-- the surfaces that the playgrounds are on do not always seem to be safe. Also, fencing around the structure and/or structures that allow parents to see their children is very important-- especially when the playgrounds are crowded. It is scary when you have more than 1 child to watch and it is difficult to see into the structures very well to know where your kids are.
25. a water playground
26. More swings of various heights, more walking, biking paths. More benches, more covered areas, more picnic areas, more bathrooms, and soft areas on the playground (like recycled tires). Children's playground fenced in or protected somehow like Bunten is. Flower gardens and fountains would be pretty, maybe get community involved in planting.
27. basic jungle gyms and swings
28. Something with pervious ground cover; preferably something that will last throughout the years. It would be nice to have a toddler area separate from the larger play structures. It would be nice to have a nature and wood feeling to the structure.
29. Reinforce the railroad theme which recognizes the City's roots and the Transportation Museum.
30. Tennis Courts
31. Two Story playground so the kids have a real playground to play on
32. Picnic tables. Places to cook out.
33. Something for older kids.
34. Water theme - slides and fountains.
35. swimming pools, petting zoo, horseback riding, mini golf, croquet, horseshoes, badminton ..things seniors can do too ... free lessons in Spanish, free dance lessons, free craft/hobby projects/lessons, camera surveillance closely monitored, emergency call boxes



36. Themed jungle gyms (look like a pirate ship, etc. Water fountain. Plant more trees near bleachers for watching teams play. MORE shade trees where we need it PLEASE!!
37. Dogs activities, Agility course for dogs
38. answered in 12 above
39. I don't even know what this means. "Themed?"
40. For little kids, I've seen the pirate ship that's cute
41. Some equipment for older kids 10+ who can't use playground (too many babies and small kids)
42. Dog Agility Courses
43. Universal equipment that would include children and/or adults with disabilities that limit access in the traditional/standard way others would....ramps, lifts, lowered items, textures, smooth, less resistive paths to travel with greater ease, etc.
44. skating, water activities,
45. Handicapped accessible
46. Slids are too steep More safe playground stuff, bridges, swings, tires swings etc. Better drainage in Bunten Road park playground
47. It would be nice to have a skatepark or park where kids can ride their bicycles. I wish more would be done to the Rogers Bridge Park - I live closeby but don't utilize it. It would nice to have a playground and better access to the River for fishing.
48. Taylor Park - nature or municipal theme
49. Mini Outdoor Railroad
50. see question NINE...restore ROGERS BRIDGE
51. mini railroad
52. We live in Nashville and visit my home club in Columbia Tennessee. We go to the track for meets twice or three times a year. We take off work and make it a vacation. The local area loves to see us coming to play since i usually spend over 500.00 dollars to the local motel and resturants. We have been to Duluth in the past at the the old museum site....we miss the fun.....come up and see us at Columbia in May.....
53. Outdoor railroad track through the park at Rogers Bridge Park for running 7 1/2 in gauge trains such as you had July 3
54. railroad and skate parks

Question 19 What ethnic group do you mostly closely identify yourself? Other

1. American Indian
2. mixed race
3. All American
4. American, why does ethnicity matter?
5. american indian/ italian



APPENDIX B: PARK AND GREENWAY COST ESTIMATES

The following are order of magnitude estimates of cost. The estimates are based upon average 2007 construction costs; actual costs may differ from these estimates. The estimates include fees for engineering, construction, and include a fifteen percent contingency. Please note that the estimates do not include costs associated with land acquisition or inflation.

Chattahoochee River Greenway				
General Conditions	LS	1	\$450,000.00	\$450,000
Site Prep	LS	1	\$200,000.00	\$200,000
Grading	LS	1	\$300,000.00	\$300,000
Erosion Control	LS	1	\$350,000.00	\$350,000
Paved Trail (10' Wide)	SF	90,000	\$6.00	\$540,000
Walls	LS	1	\$30,000.00	\$30,000
Boardwalk Trail	LF	7,000	\$400.00	\$2,800,000
Overlooks	EA	4	\$30,000.00	\$120,000
Signage/Site Furniture	LS	1	\$60,000.00	\$60,000
Planting	LS	1	\$20,000.00	\$20,000
			Subtotal:	\$4,870,000
			Design Fee @ 8%:	\$389,600
			Contingency @ 15%:	\$730,500
			Total Cost:	\$5,990,100

Central City Bikeway Option A				
	UNIT	QTY	COST	ITEM TOTALS
General Conditions	LS	1	\$300,000.00	\$300,000
Traffic Control	LS	1	\$80,000.00	\$80,000
Site Prep	LS	1	\$75,000.00	\$75,000
Grading	LS	1	\$175,000.00	\$175,000
Erosion Control	LS	1	\$175,000.00	\$175,000
Trail Head Plaza @ Town Center	LS	1	\$25,000.00	\$25,000
Paved Trail (10' Wide)	SF	122,000	\$6.00	\$732,000
Walls	SF	25,000	\$60.00	\$1,500,000
Railing	LS	1	\$250,000.00	\$250,000
Signalized Crossing	LS	1	\$150,000.00	\$150,000
Signage/Site Furniture	LS	1	\$50,000.00	\$50,000
Planting	LS	1	\$35,000.00	\$35,000
			Subtotal:	\$3,547,000
			Design Fee @ 10%:	\$354,700
			Contingency @ 15%:	\$532,050
			Total Cost:	\$4,433,750



Central City Bikeway Option B				
	UNIT	QTY	COST	ITEM TOTALS
General Conditions	LS	1	\$500,000.00	\$500,000
Traffic Control	LS	1	\$50,000.00	\$50,000
Site Prep	LS	1	\$150,000.00	\$150,000
Grading	LS	1	\$200,000.00	\$200,000
Erosion Control	LS	1	\$200,000.00	\$200,000
Trail Head Plaza @ Town Center	LS	1	\$25,000.00	\$25,000
Railing	LF	3,500	\$40.00	\$140,000
Walls	LS	18,500	\$60.00	\$1,110,000
Tunnels	LS	1	\$750,000.00	\$750,000
Paved Trail (10' Wide)	SF	68,000	\$6.00	\$408,000
Boardwalk Trail	LF	5,000	\$400.00	\$2,000,000
Signage/Site Furniture	LS	1	\$50,000.00	\$50,000
Planting	LF	1	\$20,000.00	\$20,000
			Subtotal:	\$5,603,000
			Design Fee @ 10%:	\$560,300
			Contingency @ 15%:	\$840,450
			Total Cost:	\$7,003,750

Church Street Park				
	UNIT	QTY	COST	ITEM TOTALS
General Conditions	LS	1	\$40,000.00	\$40,000
Site Prep	LS	1	\$10,000.00	\$10,000
Grading	LS	1	\$40,000.00	\$40,000
Erosion Control	LS	1	\$15,000.00	\$15,000
Lighting Allowance	LS	1	\$50,000.00	\$50,000
Asphalt Parking	SF	4,000	\$3.25	\$13,000
Curb and Gutter	LF	435	\$20.00	\$8,700
Entry Plaza	SF	1,200	\$25.00	\$30,000
Concrete Sidewalk (6 feet)	SF	6,550	\$5.00	\$32,750
Concrete Sidewalk (8 feet)	SF	5,600	\$5.00	\$28,000
Arbor	LS	1	\$20,000.00	\$20,000
Playground	LS	1	\$50,000.00	\$50,000
Planting	LS	1	\$50,000.00	\$50,000
Rain Garden	LS	1	\$30,000.00	\$30,000
			Subtotal:	\$417,450
			Design Fee @ 10%:	\$41,745
			Contingency @ 15%:	\$62,618
			Total Cost:	\$521,813



Taylor Memorial Park: Option 1, Wildlife Option				ITEM
	UNIT	QTY	COST	TOTALS
General Conditions	LS	1	\$17,000.00	\$17,000
Site Prep/Grading	LS	1	\$15,000.00	\$15,000
Erosion Control	LS	1	\$10,000.00	\$10,000
Resilient Surface	SF	3,600	\$15.00	\$54,000
Concrete Sidewalk	SF	2,200	\$5.00	\$11,000
Grass / Planting Allowance	LS	1	\$5,000.00	\$5,000
Mulch Surface	SF	1,550	\$4.00	\$6,200
Wood Play Structure	LS	1	\$20,000.00	\$20,000
Wildlife Play Sculptures	EA	7	\$7,000.00	\$49,000
Concrete Seat Wall	LF	90	\$85.00	\$7,650
			Subtotal:	\$194,850
			Design Fee @ 15%:	\$29,228
			Contingency @ 15%:	\$29,228
			Total Cost:	\$253,305

Taylor Memorial Park: Option 2, Natural Option				ITEM
	UNIT	QTY	COST	TOTALS
General Conditions	LS	1	\$13,000.00	\$13,000
Site Prep/Grading	LS	1	\$15,000.00	\$15,000
Erosion Control	LS	1	\$10,000.00	\$10,000
Concrete Sidewalk	SF	2,270	\$5.00	\$11,350
Resilient Surface	SF	2,100	\$15.00	\$31,500
Grass / Planting Allowance	LS	1	\$5,000.00	\$5,000
Mulch Surface	SF	1,550	\$4.00	\$6,200
Concrete Seat Wall	LF	90	\$85.00	\$7,650
Boulder Seating	LF	60	\$100.00	\$6,000
Play Structures	EA	3	\$15,000.00	\$45,000
			Subtotal:	\$150,700
			Design Fee @ 15%:	\$22,605
			Contingency @ 15%:	\$22,605
			Total Cost:	\$195,910

Taylor Memorial Park: Option 3, Miniature City				ITEM
	UNIT	QTY	COST	TOTALS
General Conditions	LS	1	\$18,000.00	\$18,000
Site Prep/Grading	LS	1	\$15,000.00	\$15,000
Erosion Control	LS	1	\$10,000.00	\$10,000
Resilient Surface	SF	2,700	\$15.00	\$40,500
Concrete Sidewalk	SF	2,240	\$5.00	\$11,200
Grass / Planting Allowance	LS	1	\$5,000.00	\$5,000
Sand Surface	SF	400	\$2.00	\$800
Concrete Seat Wall	LF	100	\$85.00	\$8,500
Play Structures	EA	6	\$15,000.00	\$90,000
			Subtotal:	\$199,000
			Design Fee @ 15%:	\$29,850
			Contingency @ 15%:	\$29,850
			Total Cost:	\$258,700



Rogers Bridge Park				
	UNIT	QTY	COST	ITEM TOTALS
General Conditions	LS	1	\$275,000.00	\$275,000
Site Prep	LS	1	\$20,000.00	\$20,000
Grading	LS	1	\$115,000.00	\$115,000
Erosion Control	LS	1	\$35,000.00	\$35,000
Utility Allowance	LS	1	\$100,000.00	\$100,000
Asphalt Drive/Parking	SF	80,000	\$3.25	\$260,000
Curb and Gutter	LF	7,000	\$20.00	\$140,000
Concrete Sidewalk (6 feet)	SF	36,000	\$5.00	\$180,000
Multi-Use Trail (10 feet)	SF	24,000	\$6.00	\$144,000
Nature Trails	LS	1	\$25,000.00	\$25,000
Playgrounds	EA	2	\$75,000.00	\$150,000
Dog Park	LS	1	\$175,000.00	\$175,000
Volleyball	LS	1	\$5,000.00	\$5,000
Great Lawn	LS	1	\$75,000.00	\$75,000
Quiet Corner	LS	1	\$35,000.00	\$35,000
Stream Restoration	LS	1	\$30,000.00	\$30,000
Bioswale	LS	1	\$30,000.00	\$30,000
Street Tree Planting	LS	1	\$50,000.00	\$50,000
Reforestation	LS	1	\$200,000.00	\$200,000
River Overlook	LS	1	\$75,000.00	\$75,000
Small Pedestrian Bridge	LS	1	\$15,000.00	\$15,000
Site Furniture	LS	1	\$50,000.00	\$50,000
Picnic Shelters (Large)	EA	2	\$30,000.00	\$60,000
Picnic Shelters (Small)	EA	3	\$20,000.00	\$60,000
Shade Structures	EA	2	\$15,000.00	\$30,000
Restroom/Trailhead/Office	LS	1	\$325,000.00	\$325,000
			Subtotal:	\$2,659,000
			Design Fee @ 8%:	\$212,720
			Contingency @ 15%:	\$398,850
			Total Cost:	\$3,270,570

Scott Hudgens Park				
	UNIT	QTY	COST	ITEM TOTALS
General Conditions	LS	1	\$400,000.00	\$400,000
Site Prep	LS	1	\$25,000.00	\$25,000
Grading & Drainage	LS	1	\$300,000.00	\$300,000
Erosion Control	LS	1	\$75,000.00	\$75,000
Utility Allowance	LS	1	\$600,000.00	\$600,000
Asphalt Drive/Parking	SF	137,000	\$3.25	\$445,250
Curb and Gutter	LF	11,200	\$20.00	\$224,000
Concrete Sidewalk (6 feet)	SF	40,000	\$5.00	\$200,000
Soccer Fields	EA	8	\$225,000	\$1,800,000
Practice Fields	LS	1	\$75,000	\$75,000
River Overlook	EA	2	\$30,000.00	\$60,000
Playground	EA	2	\$75,000.00	\$150,000
Picnic Shelter	EA	2	\$20,000.00	\$40,000
Planting Allowance	LS	1	\$85,000.00	\$85,000
Restroom / Concession Building	EA	2	\$225,000.00	\$450,000
			Subtotal:	\$4,929,250
			Design Fee @ 8%:	\$394,340
			Contingency @ 15%:	\$739,388
			Total Cost:	\$6,062,978



WP Jones Park				
	UNIT	QTY	COST	ITEM TOTALS
General Conditions	LS	1	\$150,000.00	\$150,000
Site Prep	LS	1	\$75,000.00	\$75,000
Grading	LS	1	\$75,000.00	\$75,000
Erosion Control	LS	1	\$50,000.00	\$50,000
Wall Allowance	LS	1	\$25,000.00	\$25,000
Asphalt Drive	SF	35,800	\$3.25	\$116,350
Curb and Gutter	LF	2,180	\$20.00	\$43,600
Concrete Sidewalk	SF	22,600	\$5.00	\$113,000
Grass / Planting	LS	1	\$75,000.00	\$75,000
Interpretive Trail (8' Width)	SF	36,000	\$1.50	\$54,000
Community Center	LS	1	\$550,000.00	\$550,000
Skatepark	LS	1	\$250,000.00	\$250,000
Playground	LS	1	\$75,000.00	\$75,000
Streambank Restoration	LS	1	\$50,000.00	\$50,000
Site Furniture/Signage	LS	1	\$35,000.00	\$35,000
			Subtotal:	\$1,736,950
			Design Fee @ 8%:	\$138,956
			Contingency @ 15%:	\$260,543
			Total Cost:	\$2,136,449