

Congratulations!!

Dodge County

**on completion of the new
\$2.4 million annex linked
to the state's present, oldest
working courthouse**



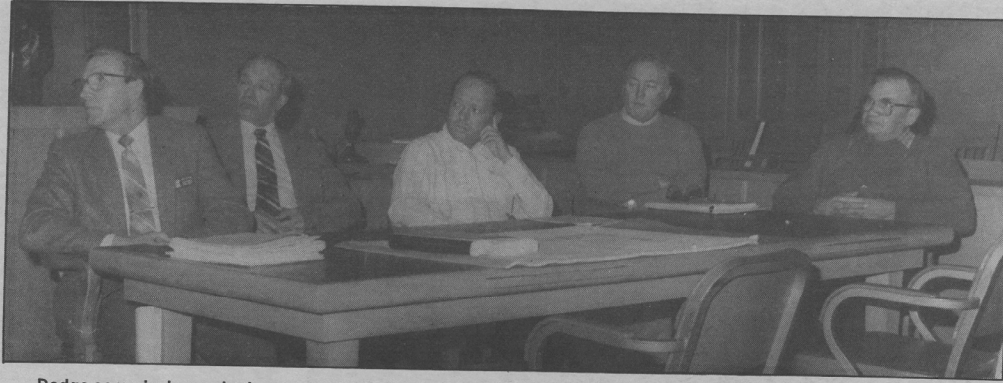
OPEN HOUSE

-Health Fair-

Sunday, July 8, 1990

1:00 - 4:00 p.m. Dodge County Courthouse

- * Tours
- * Information
- * Demonstrations
- * Health Fair
- * Refreshments served on lower floor of annex



Dodge commissioners look over a preliminary plan for the annex presented by architects Kane and Johnson. The board members are Harlan Buck, Robert Burdick, Lance Wilson, Robert Senjem and Harold Wilke.



County administrator Jim Norman arrived on the scene just in time to coordinate the move into the annex.



Steven Gransee was auditor/administrator during preliminary planning (which happened on again, off again over the last eight years) and while most of the construction was going on. Because he had to spend most of his time administering and overseeing the "project", the board decided it was time to hire a fulltime administrator.

County project connects 'old' with the 'new'

The state's oldest working courthouse was recently linked with the state's newest courthouse addition.

Dodge County now has what commissioners say, "is something we have looked forward to for a long time". A lot of work and study has been put into the project. The board added that the final result shows the people of Dodge County have a project everyone can be proud of.

County commissioners dislodged the first shovel of dirt last spring, igniting the start of the \$2.4 million facility. Up until two weeks before the official groundbreaking, commissioners were uncertain the project would go as is. Original estimates of \$1.7 and \$1.8 million had escalated to the \$2.3 to \$2.4 million range because of additions and alterations. The main reason costs jumped is because the Sheriff's Department was suddenly incorporated into the annex plans.

The Sheriff's Department was incorporated into the project because the present location, below the courthouse hill, was undersized and antiquated. When the county board looked at expanding and remodeling at the site, the cost of incorporating the department into the annex suddenly looked much more reasonable.

The 24,000 square feet, two level annex would more than double the size of the current courthouse and link the two with a common tunnel. Social Services and the Sheriff's Department were the two largest individualized departments to be incorporated. Space was also planned for the assessor, recorder, auditor, treasurer, nursing service, data processing and a central service department. Other inclusions

are a commissioner meeting room and office and conference room facilities.

The existing "historic" courthouse will continue to serve the court and correction related departments.

For the first time in 15 years, most of the county departments are working together under one (actually two) roofs, which was planned to create more efficient and effective county operations.

The Nursing Service and Zoning Departments were moved out of Kasson and Social Services and the Sheriff's Department were incorporated under one roof into the annex. The Highway and Extension Departments remain in Dodge Center, along with solid waste for the time being.

Other features of the project include the addition of an elevator near the old courthouse 'link', making both buildings handicap accessible. Parking has been increased from 55 to 117 stalls and the off-street parking has been increased because of a joint road expansion project between the City of Mantorville and Dodge County.

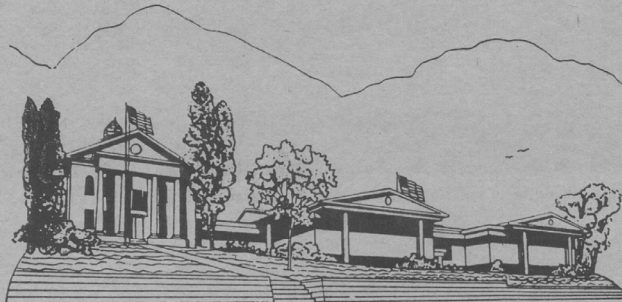
Special attention was given to replicate, but not duplicate, the existing historic courthouse architectural features. However, the new building also makes a statement of being a modern office building complex. The existing courthouse was built in 1865 with the first addition being completed in 1900.

A non-profit corporation was formed and the corporation is presently leasing the facility to the county for a token fee. The county is levying funds annually from the budget to pay for the project. The building fund contained \$340,000 when the project began.

The Dodge County Board of Commissioners would like to
invite the public to the Open House Sunday.
Remember, this is your building, too!!

Page 3

Wednesday, July 4, 1990



You're Invited

New
**Dodge County Courthouse
Annex**

Mantorville, Minnesota

OPEN HOUSE & CELEBRATION
Sunday • July 8, 1990 •
1:00 p.m. - 4:00 p.m.

Tours, Information, Demonstrations, Health Fair.
Refreshments served on lower floor of Annex

Offices Include:

COUNTY COMMISSIONERS

•Board Chambers

ADMINISTRATION

COUNTY ATTORNEY

ASSESSOR

AUDITOR

COURT ADMINISTRATOR

CORRECTIONS

COURT ROOM

JUDGES CHAMBERS

ENVIRONMENTAL QUALITY

NURSING SERVICE

SOCIAL SERVICES

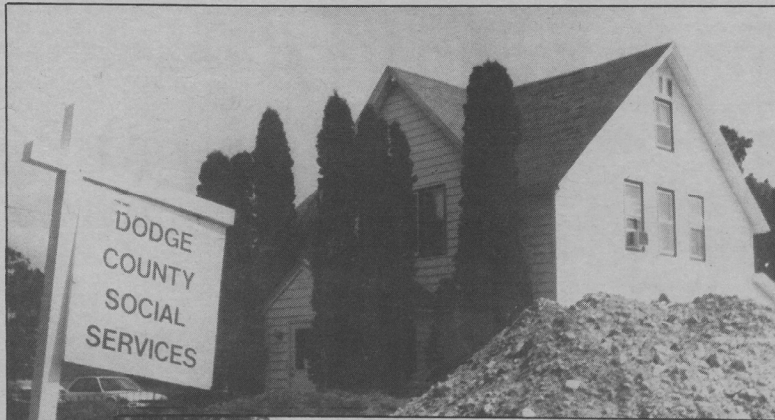
RECORDER-ABTRACTOR

TREASURER

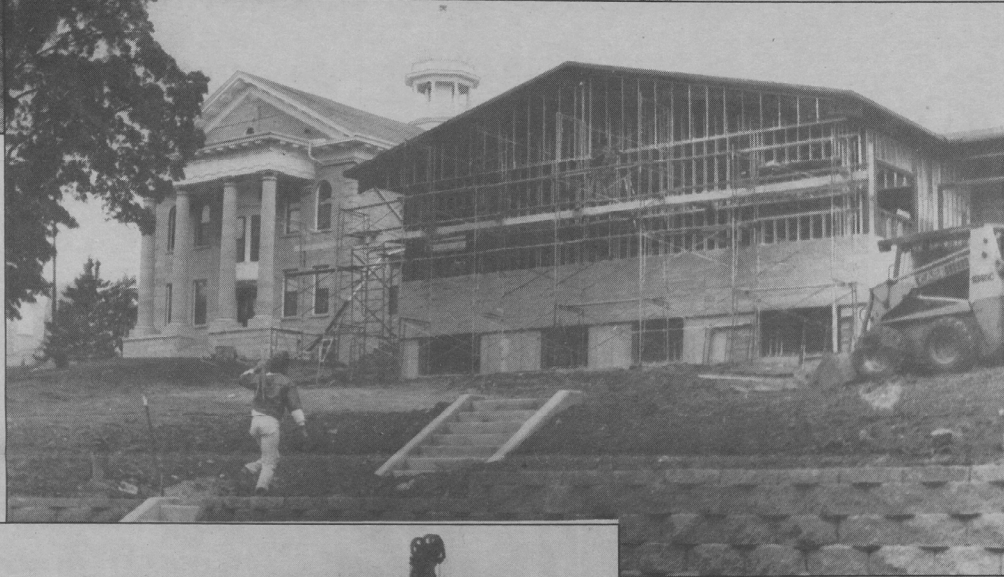
SHERIFF

VETERANS SERVICE

ZONING



*Project begins
to take shape...*



**“What is a health fair-
Come and see”**

Margaret A. Vatland, PHN

The Dodge County Nursing Service will be holding a Health Fair in conjunction with the Dodge County Courthouse Annex Open House on Sunday, July 8, 1990, from 1-4:00 p.m.

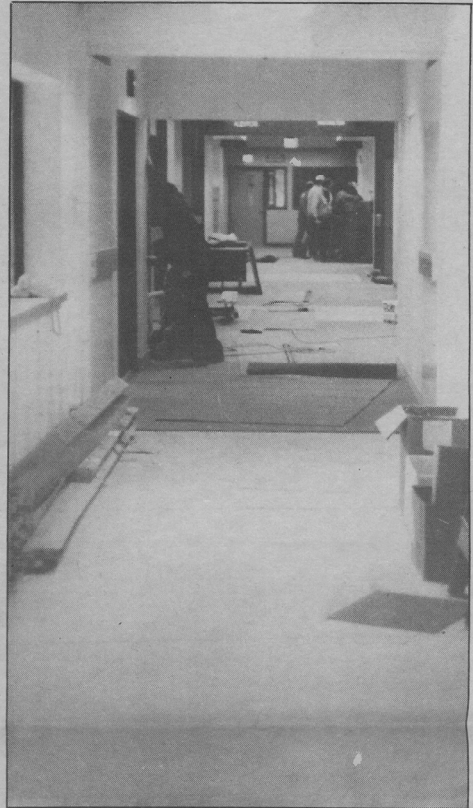
The following health services will be offered:

1. Blood Glucose for diabetes \$2.00
2. Mantoux \$4.00
3. Tetanus Diphtheria boosters for adults \$4.00
4. Free blood pressures
5. Heights and Weights - Infants through Adult

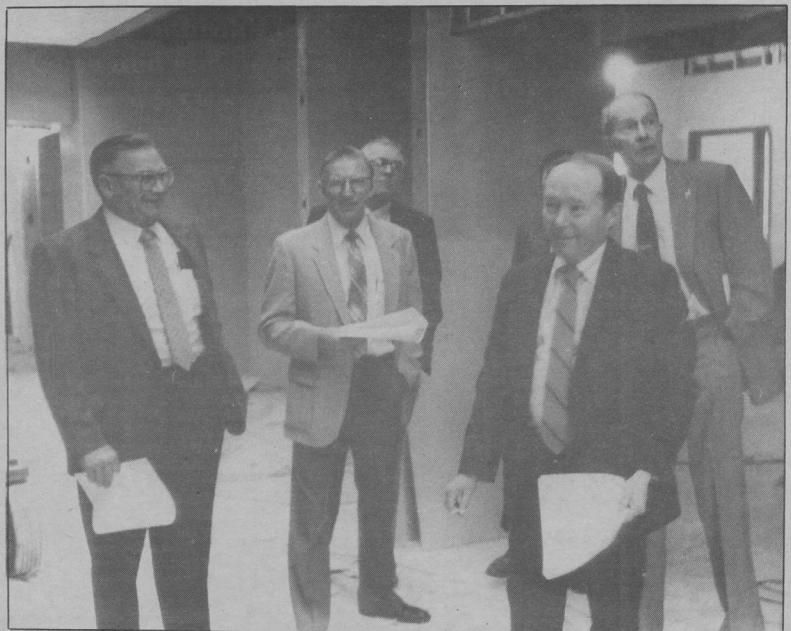
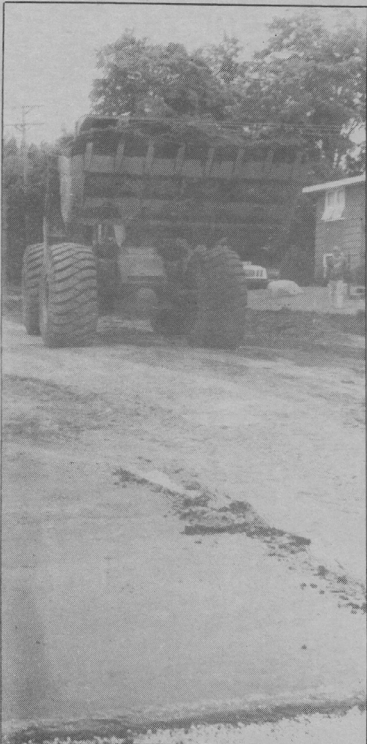
In addition, there will be presentations on breast and testicular self examinations. Included in this presentation is the opportunity to use a Bio-1 like model to feel tumors. There will also be a demonstration on the proper use of infant and child car safety seats. The following videos will be shown:

- 1:00 p.m. - Talk about AIDS
- 1:30 p.m. - Smart Snackin
- 2:00 p.m. - Report on skin cancer
- 2:30 p.m. - Infant/Child safety seats
- 3:00 p.m. - Smart Snackin
- 3:30 p.m. - Report on skin cancer

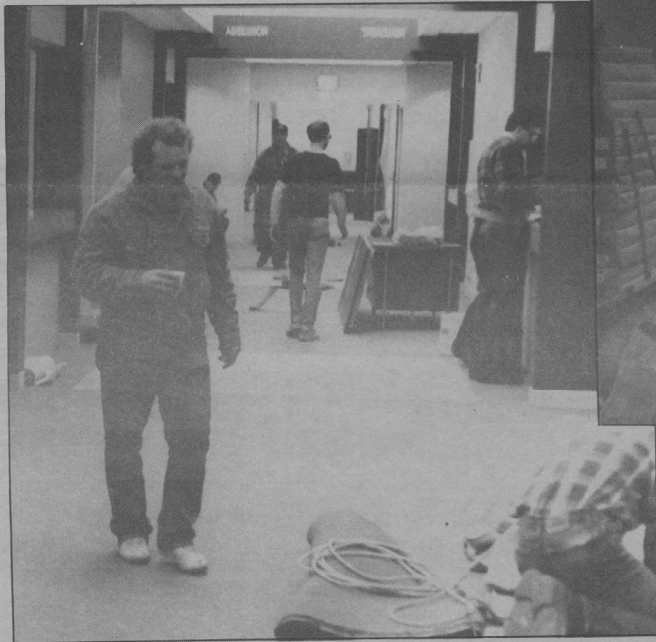
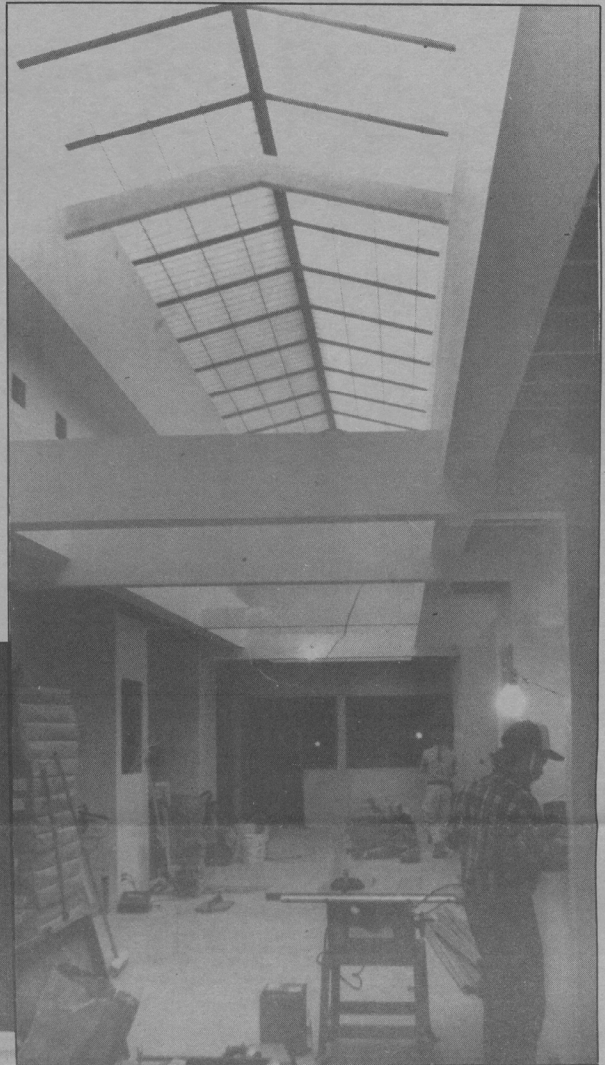
We look forward to seeing all of you at the Health Fair and Open House.



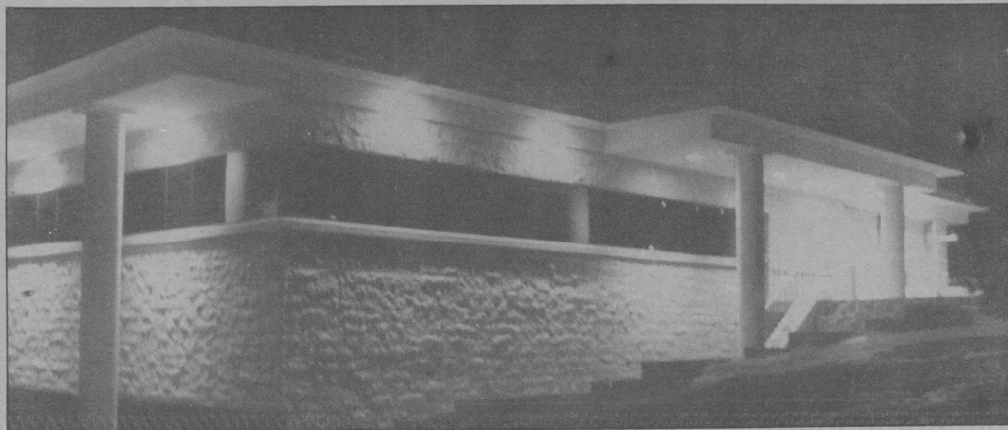
Interiors new, modern look offers bright atmosphere



Dodge commissioners like what they see on a tour of the new annex. Work remained on schedule and went quite well for a project of this magnitude.



*The move and
end result.....*





*The many faces
of the Dodge
County Courthouse...*

The Dodge County Courthouse at Mantorville has had many new looks, from the day the roof blew off in the late 1890's to the modern day era when the annex was completed a few short weeks ago. Growth in population and growth in government has necessitated the move to expand over the years. Five years after the courthouse was completed, an addition was built. Building on the remodeling has continued through the years.

**Roof blows off,
courthouse walls
survive tragedy**



The fact that the original limestone walls of the Dodge County Courthouse in Mantorville are still standing is a tribute to architect C. Townsend Mix. The fact that those walls survived a windstorm in the late 1890's which blew the roof off is further evidence the courthouse would endure long after construction began in 1865.

The 40-inch limestone walls have withstood the erosion of time and temptation by men to replace and rebuild. The people of Dodge County would have nothing of that - even though this was the oldest working courthouse in the State of Minnesota.

The town of Mantorville's historic past was being preserved - there was no reason to alter the state of the present structure that took several years to be built nearly 125 years ago. When the wind storm did its damage, the roof was rebuilt and the courthouse expanded to meet the growing needs of Dodge County.

The original estimated cost of construction was \$8,000. The final cost was nearly double that of \$15,000. Imagine if the courthouse annex, recently completed in the neighborhood of \$2.4 million, were "slightly over" the estimates to a whopping \$4.8 million?

The courthouse has not only survived the elements but has also survived public sentiment from various areas of the county to have the

structure relocated to a central location of the county - namely Dodge Center. Battle lines were drawn in the early 1900's. People like Peter Mantor and Henry Slocum can be credited for carrying on the early fight to keep the county seat where it is. A close vote in 1920 (1,260 to 1,215) kept the courthouse in Mantorville - at least for the time being!

Attempts have been made to shift the courthouse to Dodge Center, West Concord and Wasioja. Actually the first courthouse battle came into being in 1859 when 450 voters requested the board move the county seat to Wasioja. Wasioja was a growing, up and coming community at the time. The effort failed.

As improvements were made to the current courthouse, it became less economical to continue talking of centrally locating the government center of the county. Eventually the board purchased a house adjacent to the courthouse that became the home of Social Services. With construction of the \$2.4 million annex, Mantorville appears to be the site of the county seat for many years to come.

Yet if history repeats itself, years from now there may be new talk surfacing for relocating the state's oldest working courthouse. Mantorville and the Dodge County Courthouse have continued to endure even though the city is the second smallest in the state to serve as a county seat.

**We were proud to have been a part of
the courthouse annex construction project....**

**Turner Painting
and
Decorating**

**Maxson
Electric**

**Kasson
Karpert
Mart**

**Ken Hill
Building
and Repair**

County residents get money's worth

Twice Dodge County voters turned down a referendum to construct a courthouse annex. Voters felt something had to be done but they weren't about to approve a \$1.5 or even a \$2 million project.

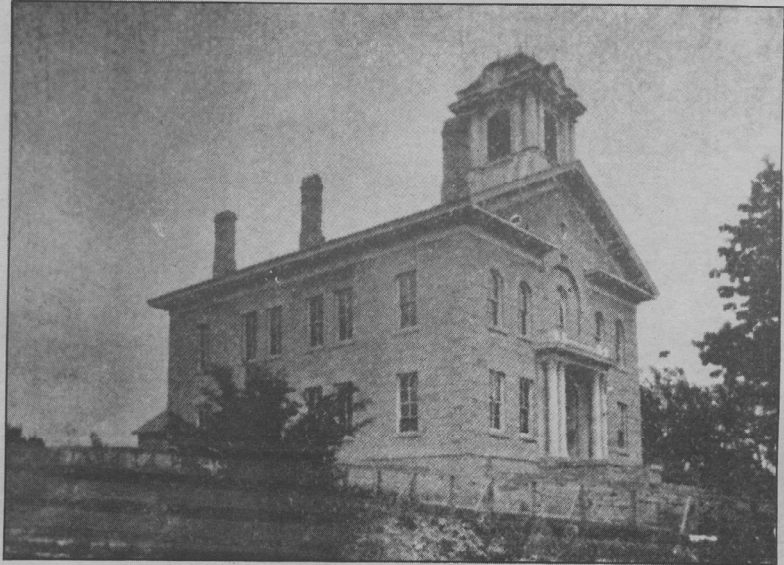
The county board then optioned to take a different route so that some type of expansion could be done. The county offices were spread out, from Dodge Center to Kasson and below the hill in Mantorville.

What the board approved was a \$2.4 million project incorporating the Sheriff's Department with the other departments that were to be consolidated into the annex. No special referendum was required.

Board members believe what the public disapproved of two years ago (by going to the polls) will be well accepted if the same people come and take a look at what the county received for \$2.4 million today.

The modern architecture, individualized departments, center skylight on the second level and bright colors inside, offer a pleasant working atmosphere. Outside, the sloping landscaping with rock walls and concrete walkways lined with shrubbery add to the positive look that matches the old with the new.

The overall picture shows that the historic past (of the old courthouse) can cohabitate with the new (annex) and create a project that compliments both the historic and modern eras.



Construction of the original courthouse began in 1865. This is the original structure which had the roof blown off by high winds some time in the late 1890's.



George Lord Taylor at his desk in the Dodge County Courthouse around the turn of the century. Taylor was county auditor from 1902 until 1931.



Courthouse employees posed outside the structure around 1920. The native limestone walls of Greek revival style have gone unchanged.

Plat books being sold at reduced rate Sunday only

During the Open House celebration for the Dodge County Courthouse Annex, Sunday, July 8th, plat books will be sold at a reduced rate. From 1-4 p.m. (open house hours) the books will sell for \$10. The regular price is \$12.75.



*As architects for the Dodge
County Courthouse Annex
project, we are proud to have
been a part of this addition to
Mantorville and the
Dodge County area.*

KANE and JOHNSON ASSOCIATES, INC.



■ P.O. Box 458; 101 24th Street S.W.
Austin, MN 55912 * Phone 507/437-7689

□ 120 N.E. 1st Street, Suite 20
Rochester, MN 55904 * Phone 507/288-1839