



Prepared in cooperation by the Dodge County Historical Society, Dodge County Environmental Services and the Goodhue County GIS Office

Dodge Center

LOCATION: Dodge Center, MN 55927

STATUS: Public

TYPE: Historic, Town

HISTORY: Dodge Center was first settled by pioneers in the 1850s and was named for its central location in Dodge County. The name Dodge comes from the twice governor of Wisconsin Henry Dodge. Dodge Center welcomed its first train on July 13th, 1866 and quickly had its first general store by 1867. Dodge Center was officially platted in 1867. In 1870, state legislature passed a bill to change the name of Dodge Center to Silas, but no further action was taken. Dodge Center was and still is mainly an agriculture-based community, growing in size due to its grain elevators. The Chicago and North Western Railroad depot was completed by 1870 which also drove the towns growth. The railroad was renamed to Chicago Great Western railroad and ran from Minneapolis, MN, through Iowa, and ending in Chicago, IL. The last section of track being placed just north of Dodge Center on the Zumbro River. The Dodge Center Press began publication in 1874 and later merged with the Dodge Center Star to become the Dodge Center Star-Record.

Today, Dodge Center is estimated to have around 3,000 people. Dodge Center revolves around agriculture and McNeilus steel. McNeilus is an OshKosh Corporation branch that manufactures trucks, refuse collection bins, and other steel parts. McNeilus is the primary employer for Dodge Center.

OTHER RESOURCES:

<https://www.dodgecountyhistorical.org/>

https://www.co.dodge.mn.us/Government_and_Links/DODGE_COUNTY_HISTORY.pdf

PROPERTY PICTURES:



Old settlers' picnic at Dodge Center; taken in front of Ellis Ayres Photographic Studio, 1888
Courtesy of the Minnesota Historical Society



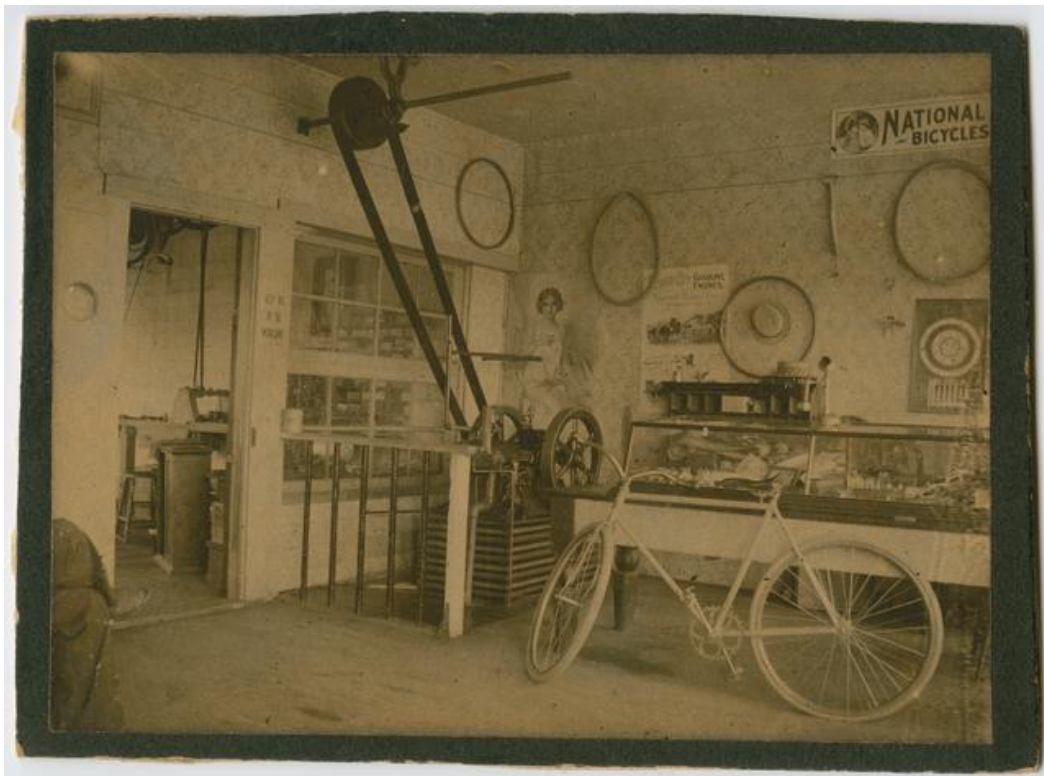
Interior of Rice Brothers repair shop, 1904

Courtesy of the Minnesota Historical Society



Interior of Rice Brothers repair shop, 1904

Courtesy of the Minnesota Historical Society



Interior of Rice Brothers repair shop, 1904

Courtesy of the Minnesota Historical Society



Aerial View, Dodge Center, 1972

Courtesy of the Minnesota Historical Society



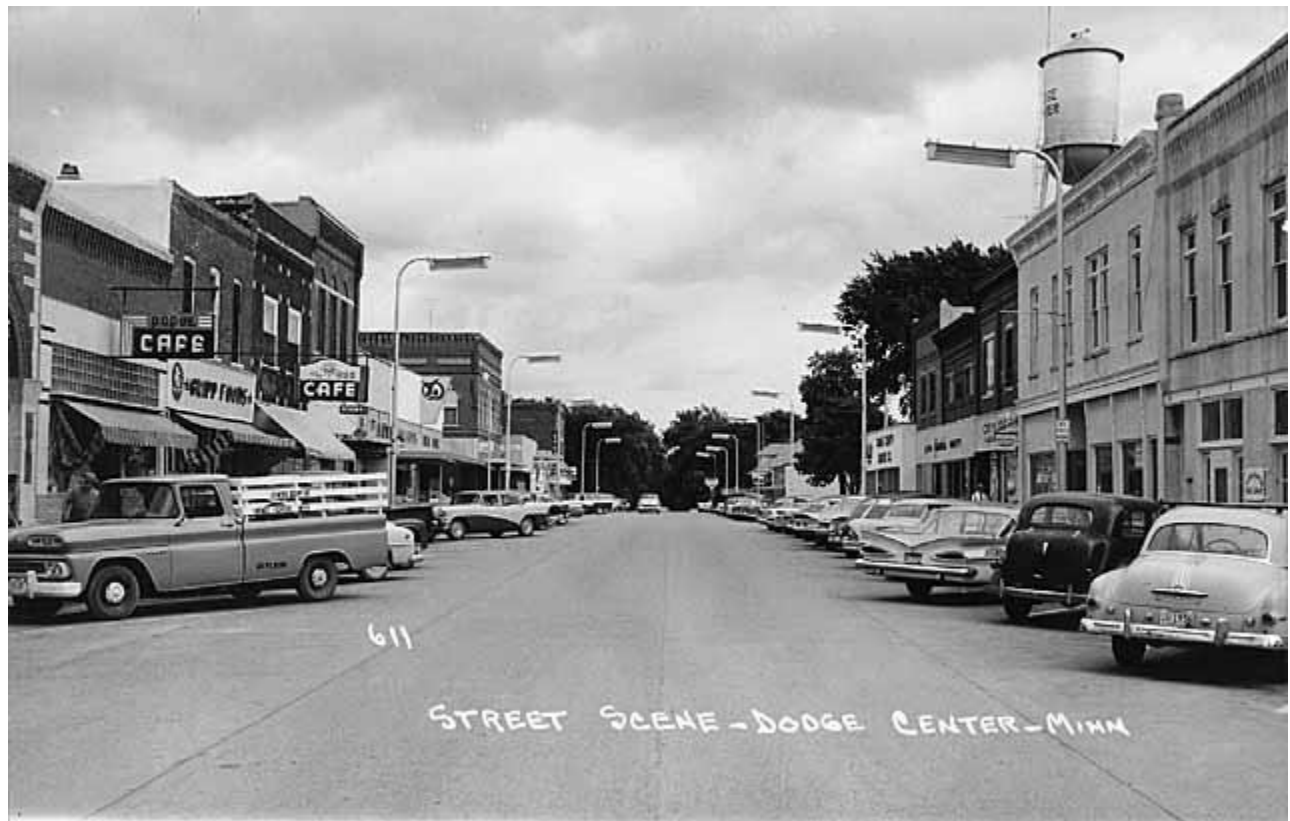
Dodge Center public school, 1886

Courtesy of the Minnesota Historical Society



Dodge Center Depot, 1910

Courtesy of the Minnesota Historical Society



Street Scene, 1965

Courtesy of the Minnesota Historical Society



Main Street, Dodge Center, 1909

Courtesy of the Minnesota Historical Society



Main Street, Dodge Center, 1908

Courtesy of the Minnesota Historical Society



Main Street, Dodge Center, 1950

Courtesy of the Minnesota Historical Society



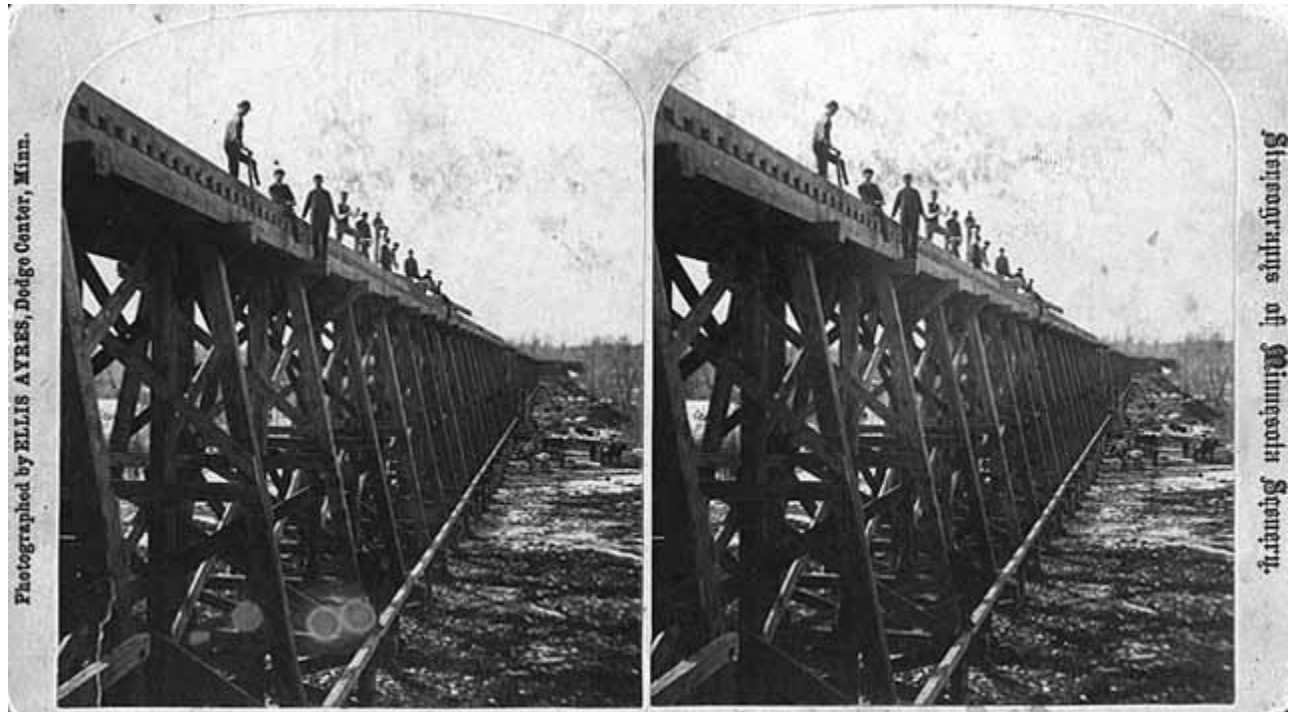
Congregational Church at Dodge Center, 1905 Courtesy of the Minnesota Historical Society



Aerial View, McNeilus Automobile Salvage Company, 1972 Courtesy of the Minnesota Historical Society



Eli B Ayars residence; first frame house built in Dodge Center, 1891. Courtesy of the Minnesota Historical Society



Trestle bridge for the Minnesota and North Western Railroad across the Zumbro River, a mile north of Dodge Center, 1885. Courtesy of the Minnesota Historical Society