

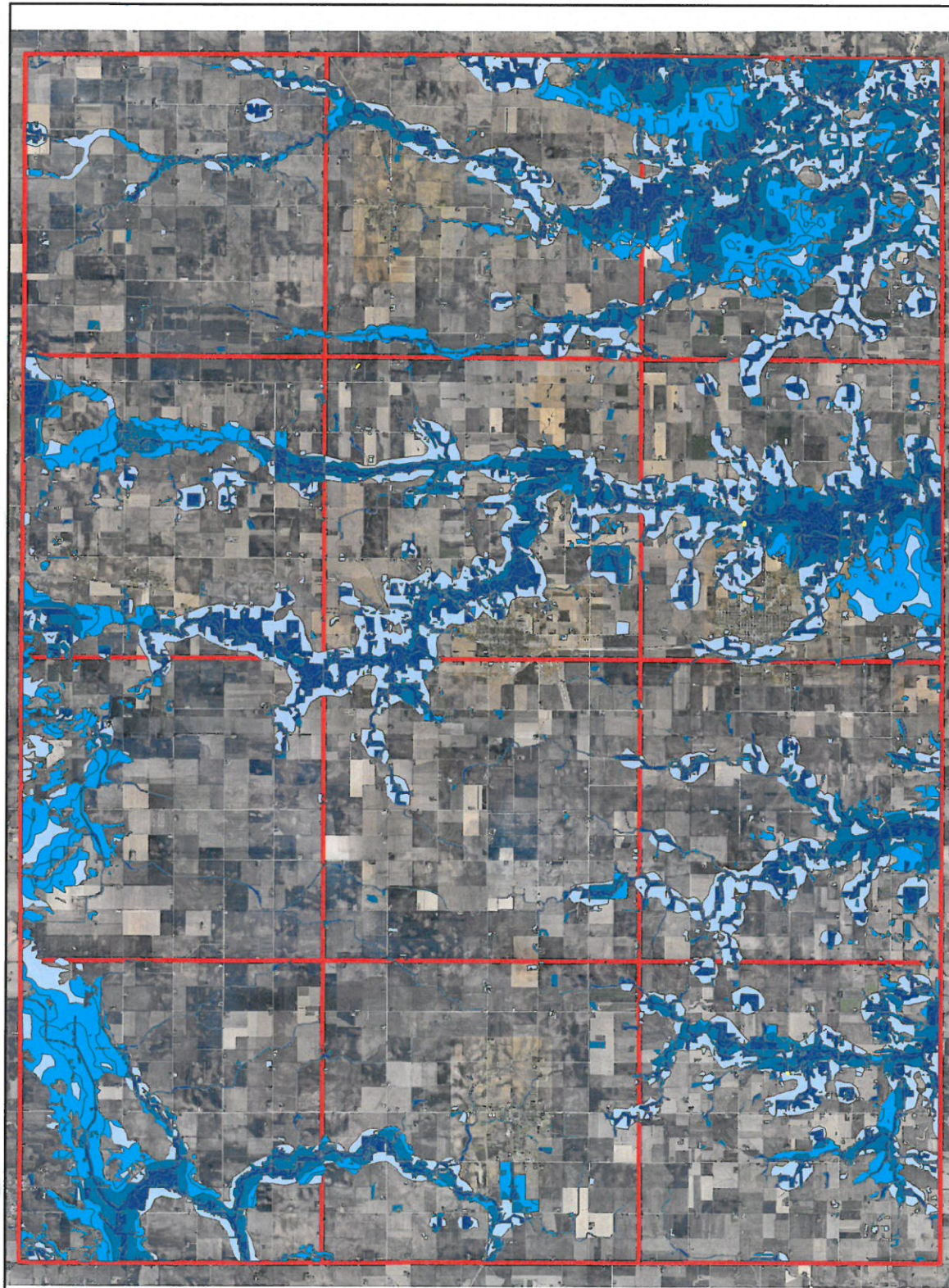
EXHIBIT A

NATURAL RESOURCES AREA MAPS
CONSERVATION CORRIDORS

Natural Resource Areas Value

Exhibit A-1

Illustration based on
2012 aerial photo



Legend

Priority Rating

- Fair
- Moderate
- High
- Very High
- PLSS Townships



0 1.25 2.5 5 7.5 10 Miles

The Following Conservation Corridors were ratified by the County Board of Commissioners as part of Zoning Ordinance Adoption on December 17, 2002 and by Board Resolution on April 8, 2003.

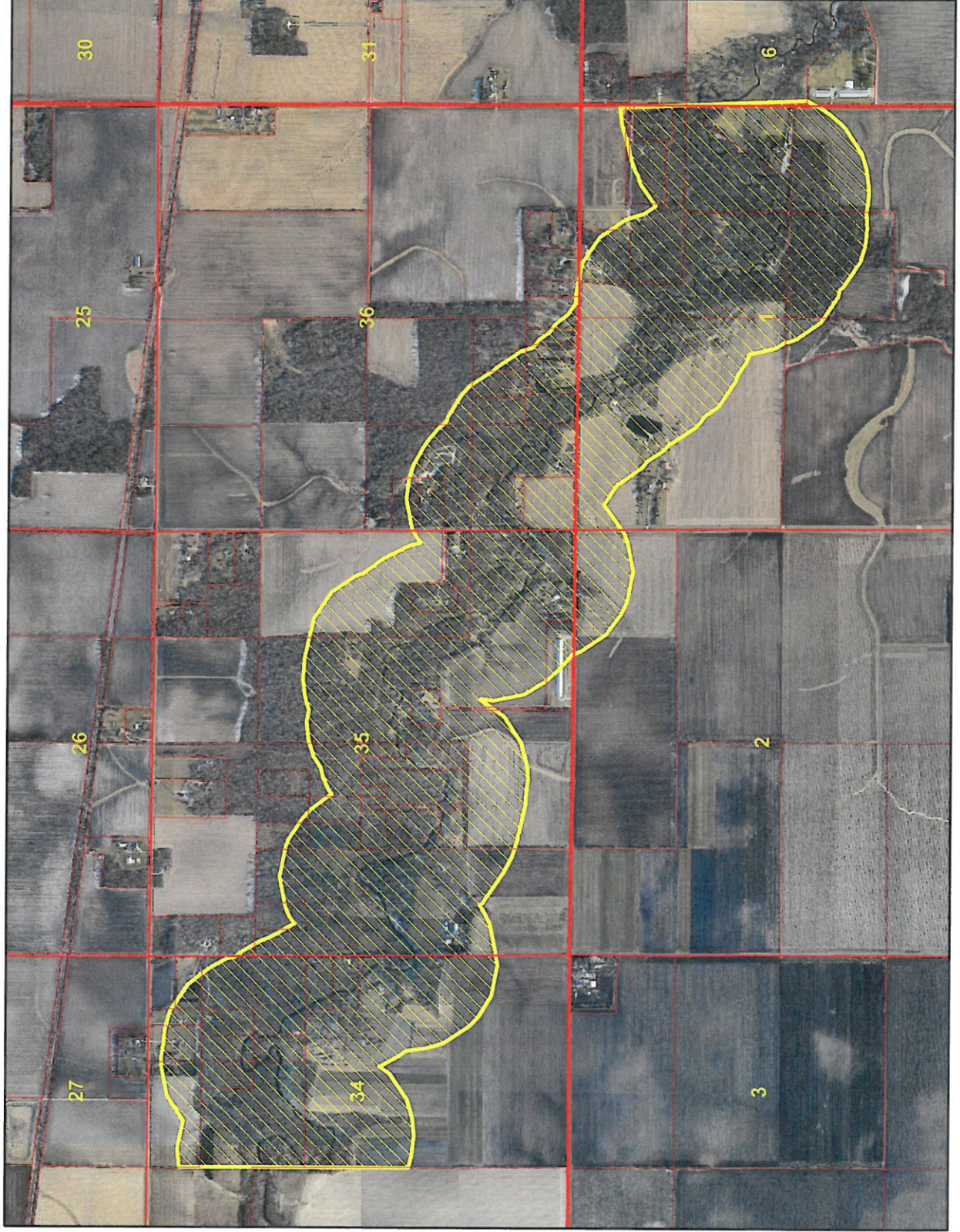
DESCRIPTION OF CONSERVATION CORRIDORS

- A-2.1. **Claremont Refuge Conservation Corridor** located within 1000 feet of the ordinary high water mark of the Lower Branch Middle Fork Zumbro River beginning at the West line of the NE $\frac{1}{4}$, Section 34, T 107N - R 18 W and extending downstream to a point on the East line of Section 1, T106N - R18W.
- A-2.2. **Cedar River Conservation Corridor** located within 1000 feet of the ordinary high water mark of the Cedar River beginning at the East line of the NW $\frac{1}{4}$ of the SW $\frac{1}{4}$, Section 27, T105N - R18W and extending downstream to a point on the South line of the NW $\frac{1}{4}$, Section 33, T105N - R18W.
- A-2.3. **Salem Creek Conservation Corridor** located within 500 feet of the ordinary high water mark of Salem Creek beginning at the West line of Section 24, T106 N - R16W and extending downstream to the East line of Section 24. T106N - R16W, except for the E $\frac{1}{4}$, W $\frac{1}{2}$, SE $\frac{1}{4}$, NW $\frac{1}{4}$ and the W $\frac{1}{2}$, E $\frac{1}{2}$, SE $\frac{1}{4}$, NW $\frac{1}{4}$, Section 24, T106N-R16W.

Conservation Corridor - Claremont Refuge Claremont & Ripley Townships

Exhibit A-2.1

Illustration based on
2012 aerial photo



Legend

- Parcel Lines
- Conservation Corridor
- Section Lines

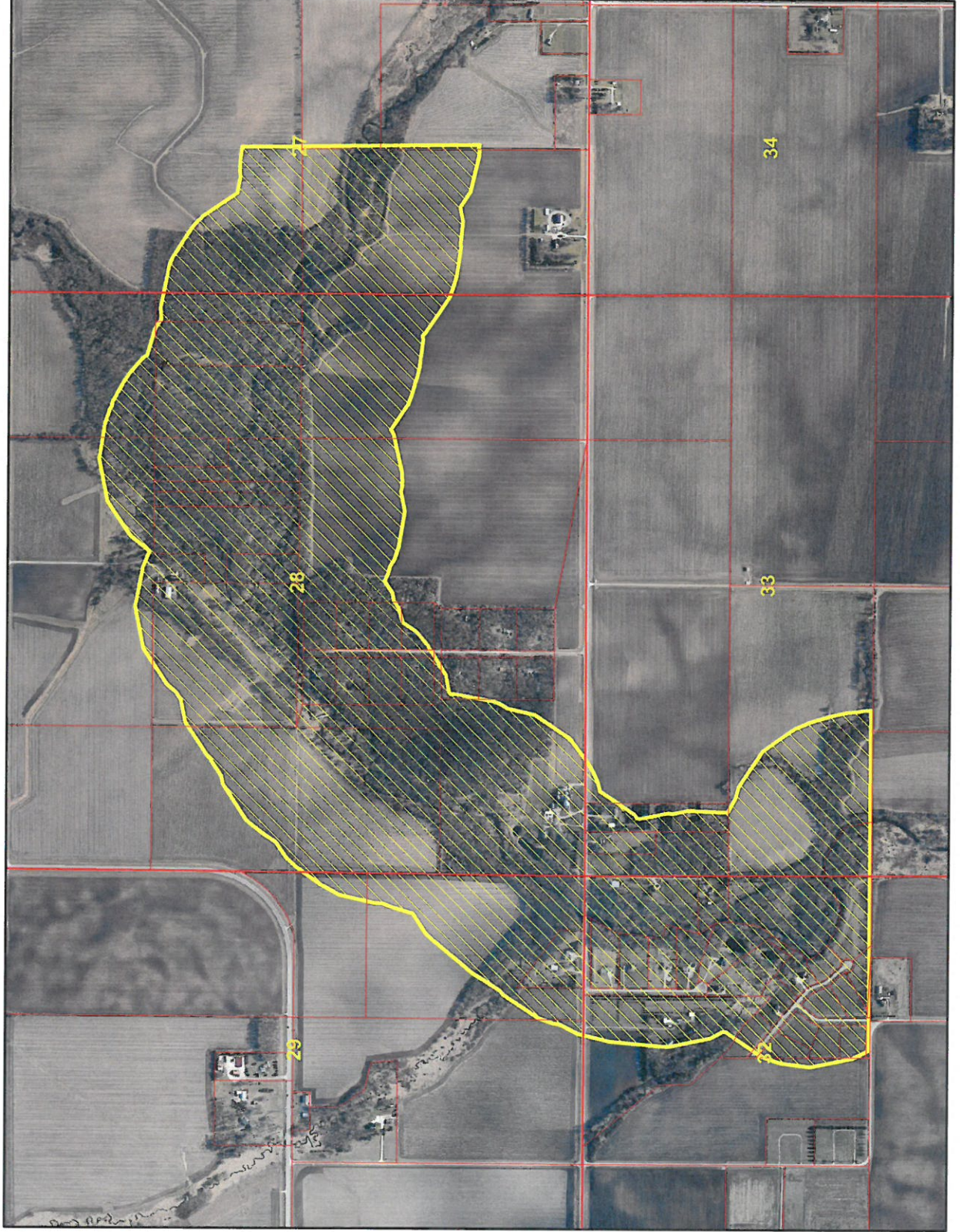


Information may be incorrect and maps may be inaccurate up to several hundred feet.

Conservation Corridor - Cedar River Westfield Township

Exhibit A-2.2

Illustration based on
2012 aerial photo



Legend

- Parcel Lines
- Conservation Corridor
- Section Lines

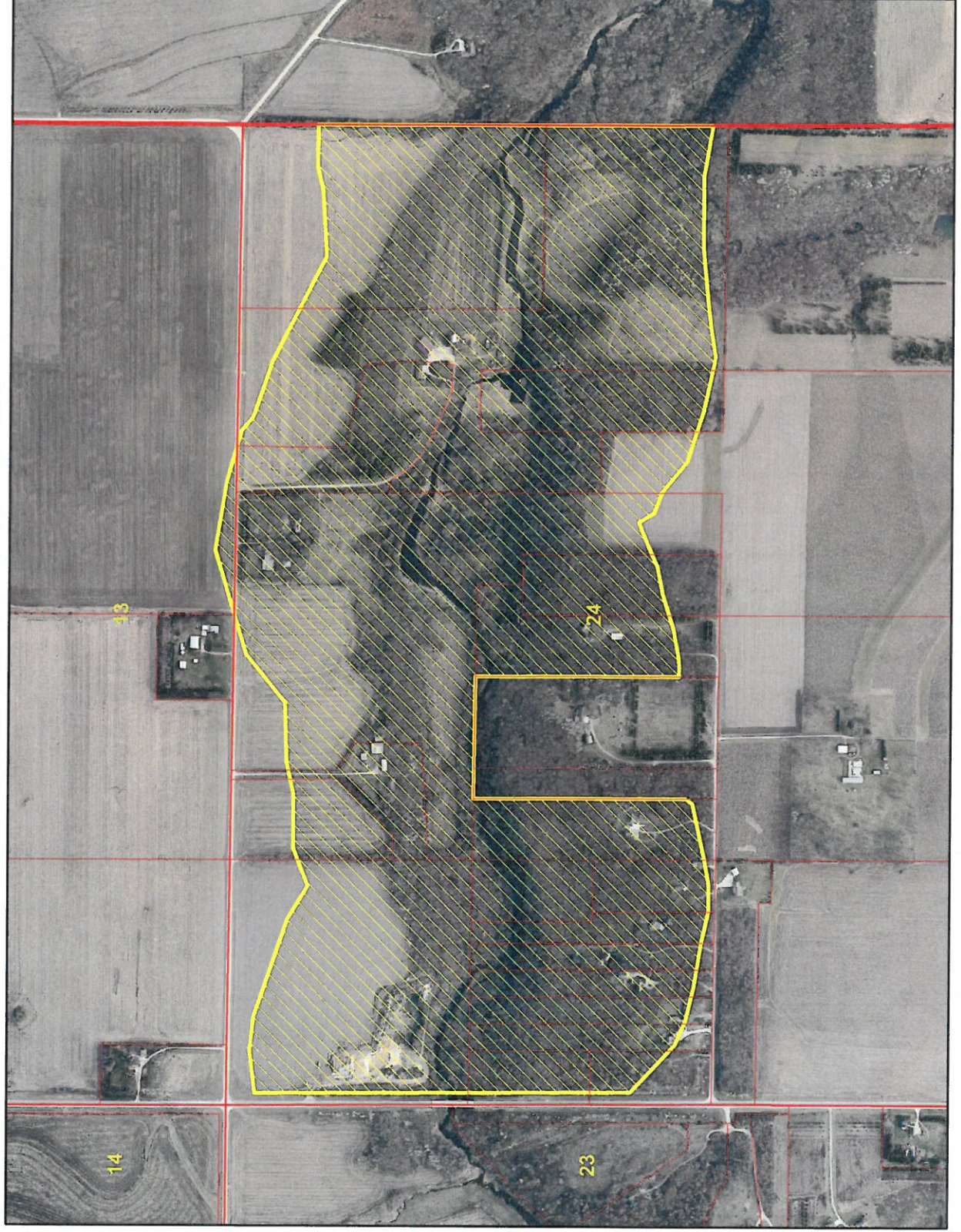


Information may be incorrect and maps may be inaccurate up to several hundred feet.

Conservation Corridor - Salem Creek Canisteo Township

Exhibit A-2.3

Illustration based on
2012 aerial photo



Legend

- Parcel Lines
- Conservation Corridor
- Section Lines

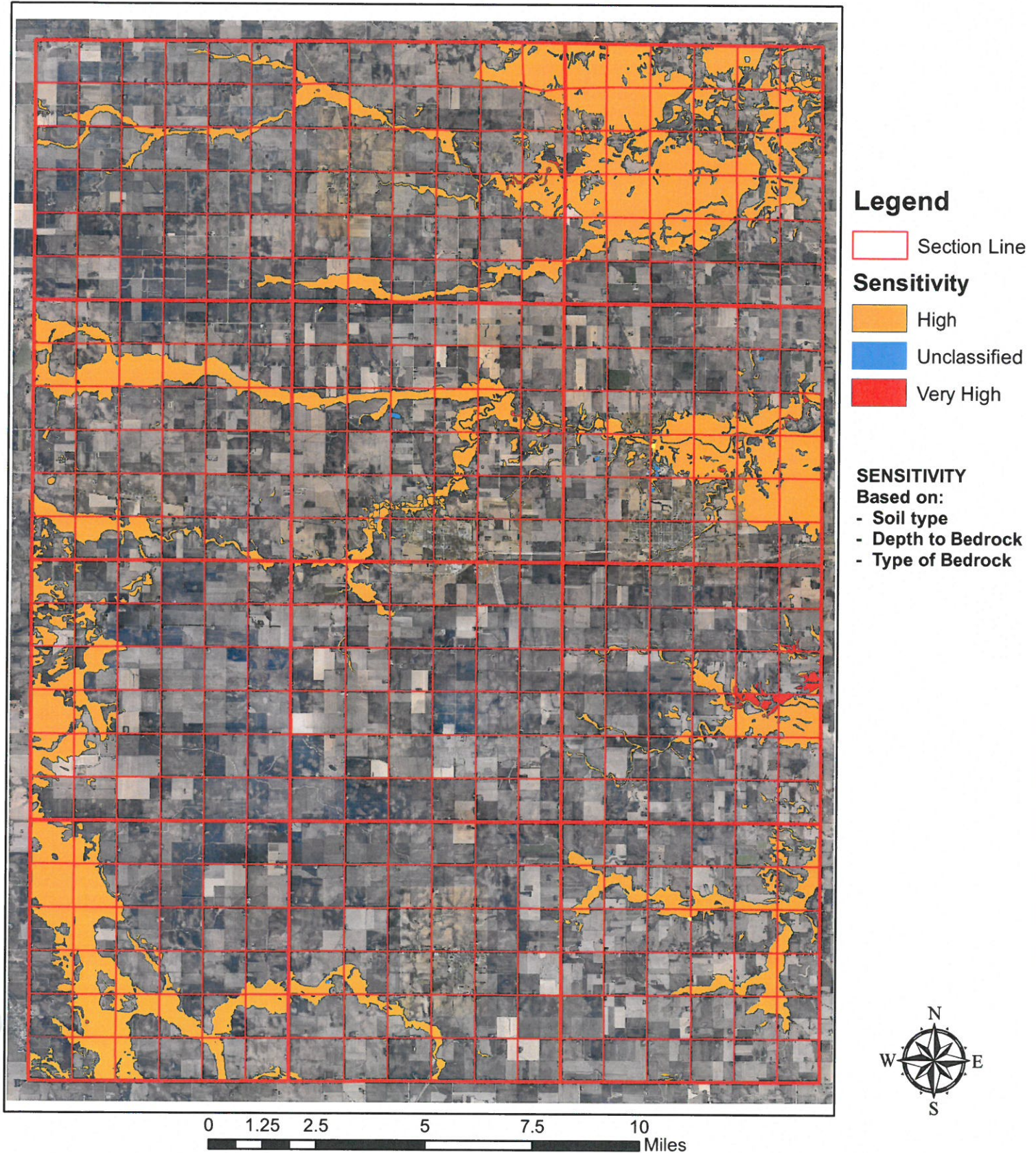


Information may be incorrect and maps may be inaccurate up to several hundred feet.

Natural Resource Area Groundwater Sensitivity

Exhibit A-3

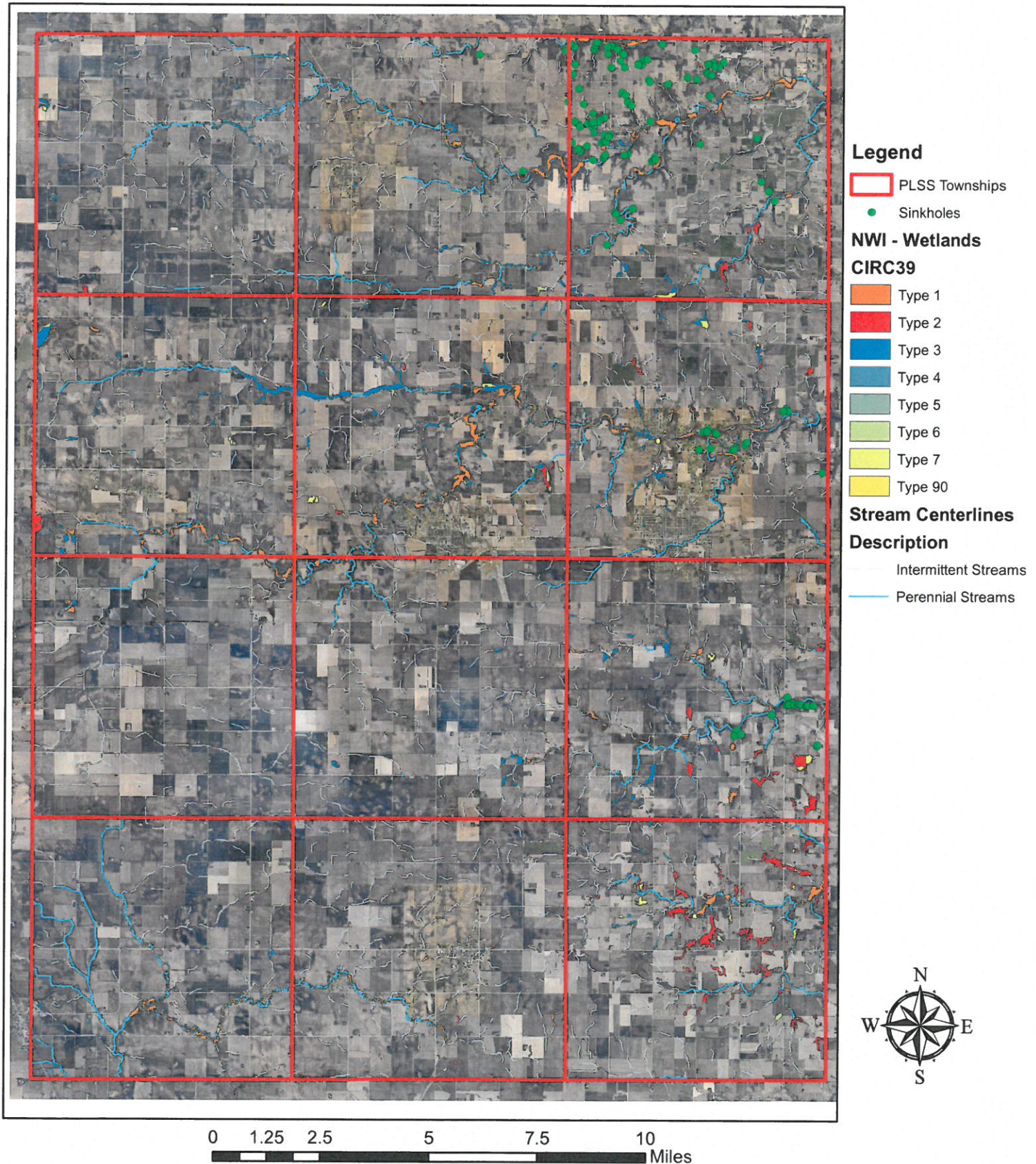
Illustration based on
2012 aerial photo



Natural Resource Area Hydrologic features

Exhibit A- 4

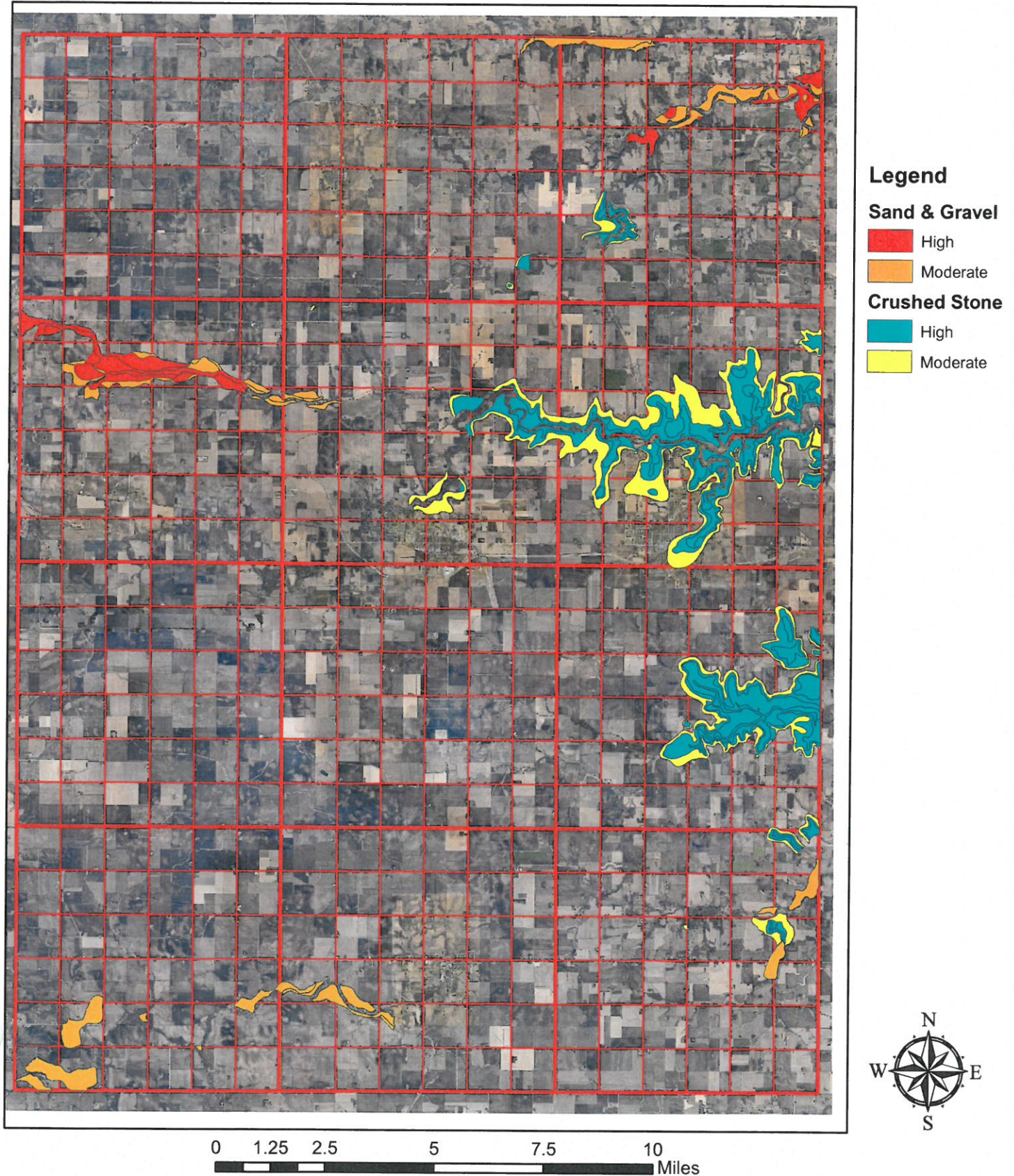
Illustration based on
2012 aerial photo



Natural Resource Area Aggregate Resources - DNR Data

Exhibit A-5

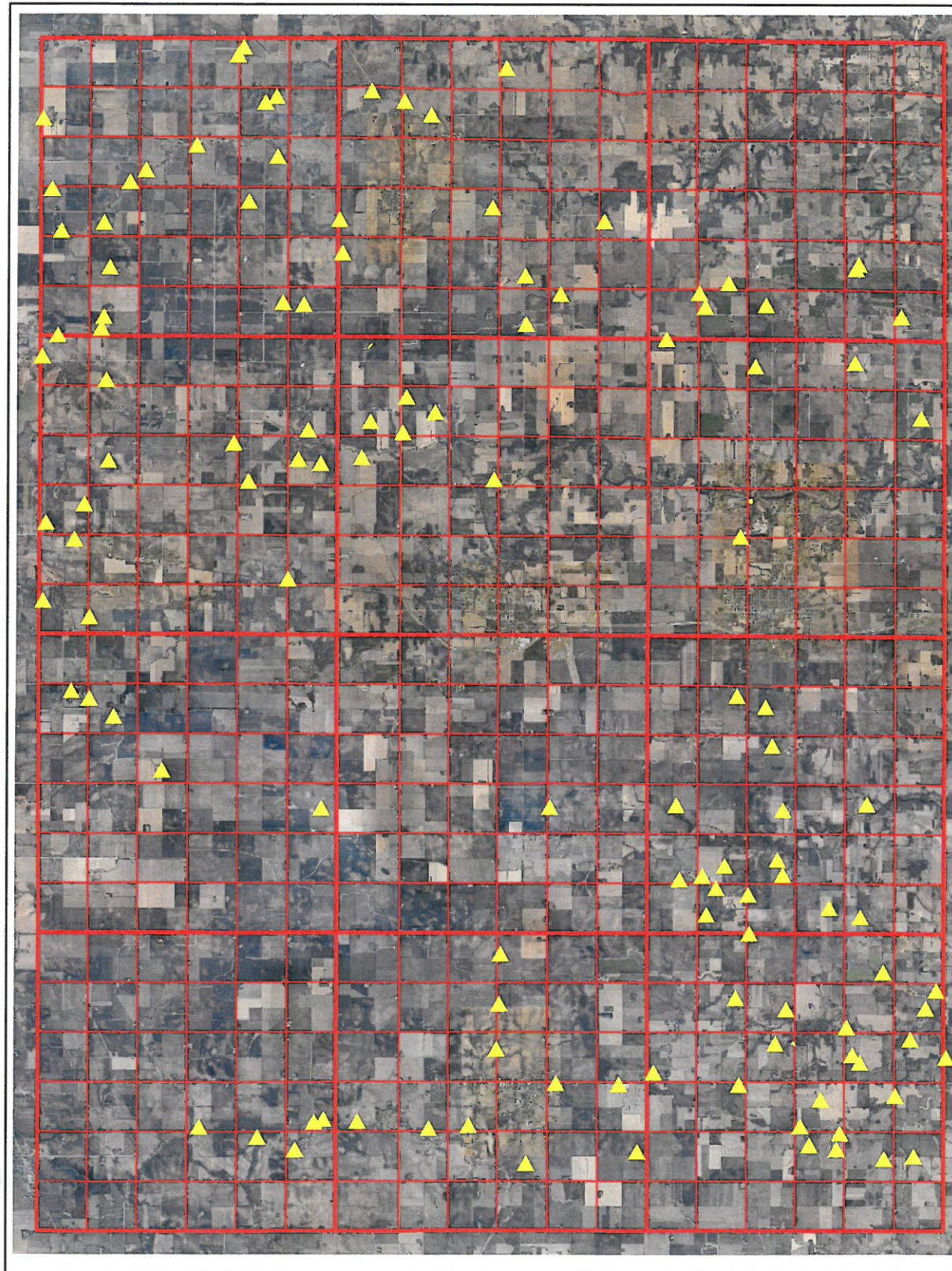
Illustration based on
2012 aerial photo



Natural Resource Area Areas of Special Interest

Exhibit A-6

Illustration based on
2012 aerial photo



Legend

Special Interest

▲ Special Interest

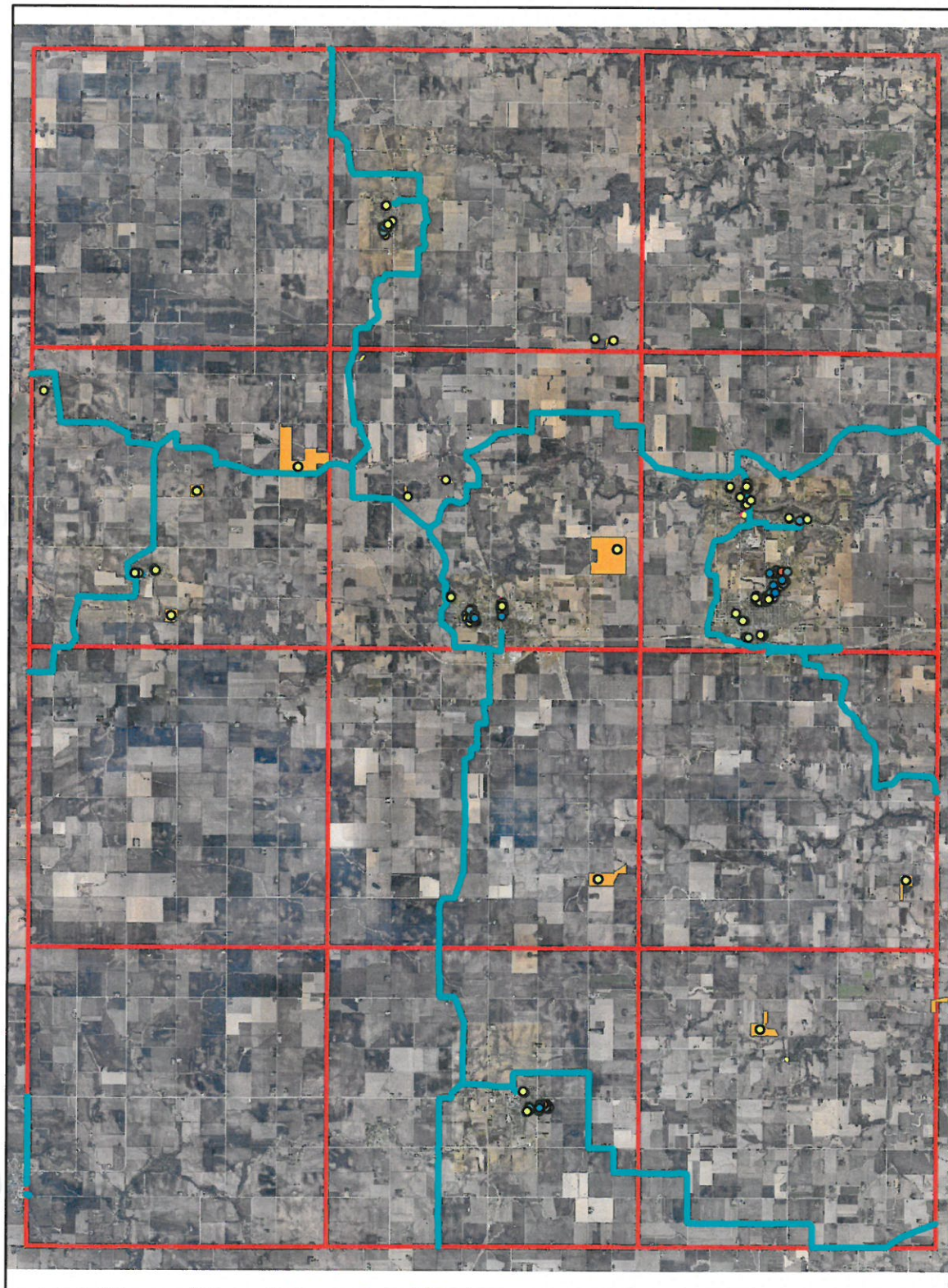


0 1.25 2.5 5 7.5 10
Miles

Natural Resource Area Recreational Features

Exhibit A-7

Illustration based on
2012 aerial photo



Legend

Recreational Features

Feature Type

- Athletic Field
- Ballfield
- Basketball Court
- Camping Facilities
- Disc Golf Course
- Educational Institution
- Facility /Building
- Fairground
- Golf Course
- Horseback Riding Area
- Horseshoe Area
- Lavatory/Bathroom
- Park
- Playground
- Running Track
- Swimming Pool
- Tennis Court
- Volleyball Court
- Snowmobile Trails
- Trails
- WMAs
- PLSS Townships



0 1.25 2.5 5 7.5 10
Miles