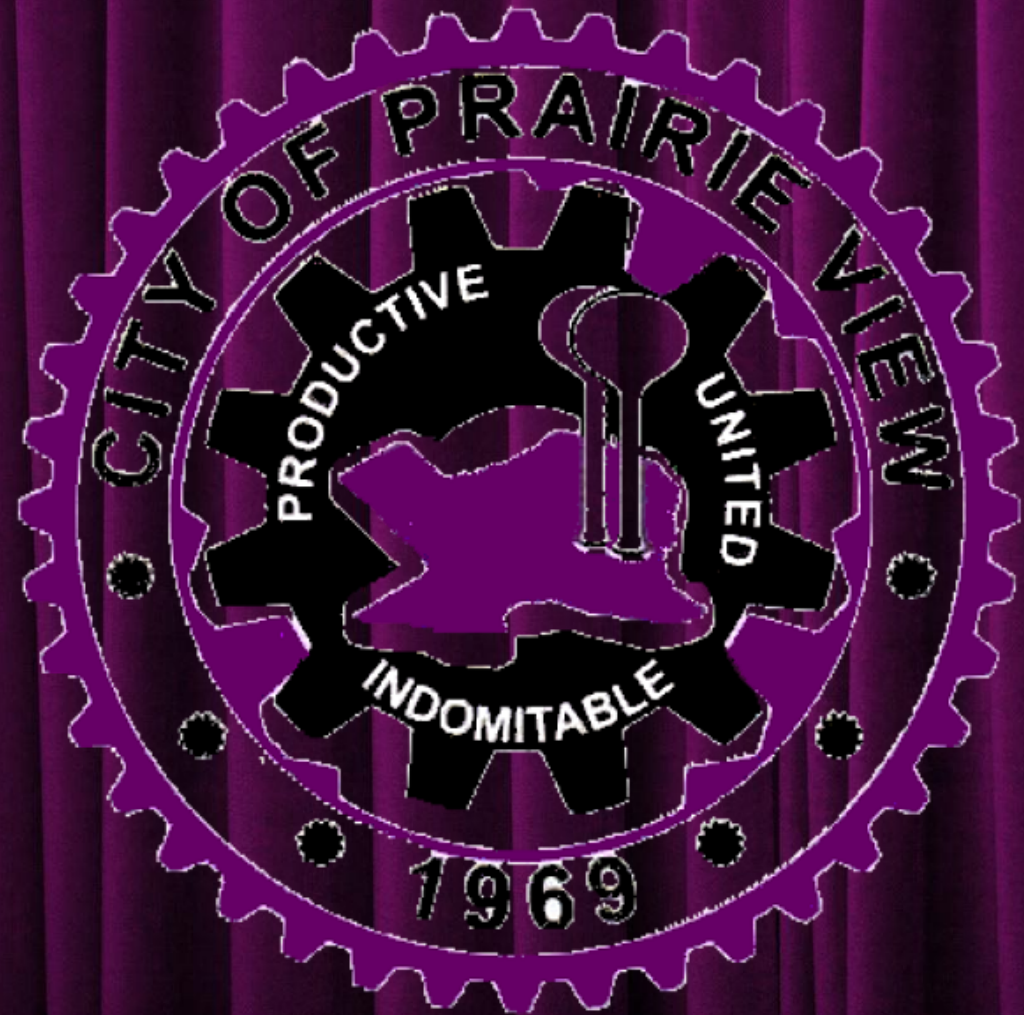


# COMMUNITY ENGAGEMENT BOARD

CITY OF PRAIRIEVIEW



## BACKGROUND

THE STUDENTS OF THE COMMUNITY DEVELOPMENT PROGRAM AT PRAIRIE VIEW A&M UNIVERSITY ESTABLISHED A COMMUNITY ANALYSIS PLAN THAT PROPOSED THE IDEA THAT A COMMUNITY ENGAGEMENT BOARD IS NEEDED TO ENGAGE THE CITIZENS OF THE PRAIRIE VIEW.

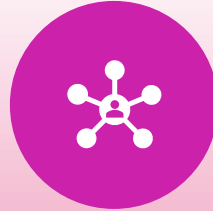
JONATHAN RANDLE ASSISTED IN THESE EFFORTS BY ADVOCATING FOR HAVING CITIZEN ADVISORY BOARDS WITH THE REST OF THE COUNCIL AGREEING ON INCREASING THE CAPACITY IN OUR CITY.



*IMPORTANCE OF  
COMMUNITY  
ENGAGEMENT*

COMMUNITY  
ENGAGEMENT IS THE  
FOUNDATION THAT  
RUNS THE CITY.

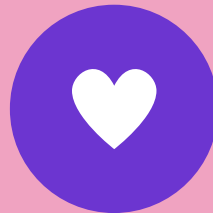
WHEN YOU ENGAGE  
THE CITIZENS, YOU  
GAIN:



More Positive  
Feedback



Participation



Passion



Cost-Efficient  
Problem-Solving  
Ideas




Diversity



Overall Happier  
Community

# ASSET BASED COMMUNITY DEVELOPMENT

 Asset Based Community Development (ABCD) is a strategy for sustainable community-driven development. The appeal of ABCD lies in its premise that communities can help identify and mobilize unrecognized assets which can help create more opportunities within the City.

 Asset Mapping

 Building Capacity

 Community Engagement Strategic Plan

 Defined Outcomes

# Asset Mapping



## 1. PHYSICAL ASSETS

PHYSICAL ASSETS IN THE COMMUNITY INCLUDE LAND, BUILDINGS, TRANSPORTATIONS, AND FACILITIES THAT CAN CONTRIBUTE TO COMMUNITY STRENGTHENING.

## 2. ECONOMIC ASSETS

ECONOMIC ASSETS INCLUDE WHAT RESIDENTS PRODUCE AND CONSUME IN THE COMMUNITY, IN BOTH FORMAL AND INFORMAL WAYS, THROUGH LOCAL BUSINESSES, OR BARTERING AND TRADING RELATIONSHIPS, THAT CAN CONTRIBUTE.

## 3. STORIES

STORIES CARRY THE MEMORY OF A COMMUNITY AND CAN DESCRIBE THE POTENTIAL OF A COMMUNITY BASED ON PREVIOUS TIMES AS REMEMBERED BY THOSE WHO LIVE THERE.

## 4. LOCAL RESIDENTS

LOCAL RESIDENTS ARE THOSE WHO LIVE IN THE COMMUNITY. RESIDENTS' SKILLS, EXPERIENCES, CAPACITIES, PASSIONS, AND WILLINGNESS CAN CONTRIBUTE TO COMMUNITY STRENGTHENING.

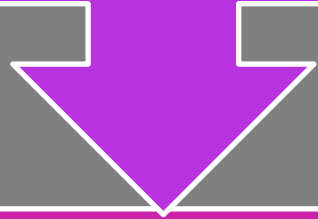
## 5. LOCAL ASSOCIATIONS

THESE INCLUDE ASSOCIATIONS IN THE COMMUNITY PRIMARILY RUN BY VOLUNTEERS, SUCH AS ATHLETIC CLUBS, FAITH-BASED GROUPS, AND OTHERS THAT CAN CONTRIBUTE.

## 6. LOCAL INSTITUTIONS

LOCAL INSTITUTIONS ARE PUBLIC SPACES IN THE COMMUNITY SUCH AS SCHOOLS, LIBRARIES, PARKS, AND GOVERNMENT ENTITIES, SUCH AS NONPROFITS.

Human capacity relates to the people who are paid or volunteer to help implement community priorities.



By building human capacity, you can build technical capacity from people who were/are experts or professionals in that area of need.

BUILDING  
HUMAN  
CAPACITY

---

## COMMUNITY ENGAGEMENT STRATEGIC PLAN

Community Watch Program

Neighborhood Programs/Workshops

Community Clean-Up

Green Initiatives

Community Newsletter

Focus Groups, Surveys, Online Discussion Boards

Associations, Committees





# PRAIRIE VIEW NEIGHBORHOODS (BASED OFF P&Z MAP)

---

Alta Vista & Wyatt Chapel

---

Clark Subdivision

---

Hillcrest

---

Osborn Clark

---

Pine Meadow Estates

---

Prairie Acres

---

Prairie Gables & Concord Village

---

Prairie Hills Section 1 & 2 & 3 & 4

---

Prairie View A&M University

---

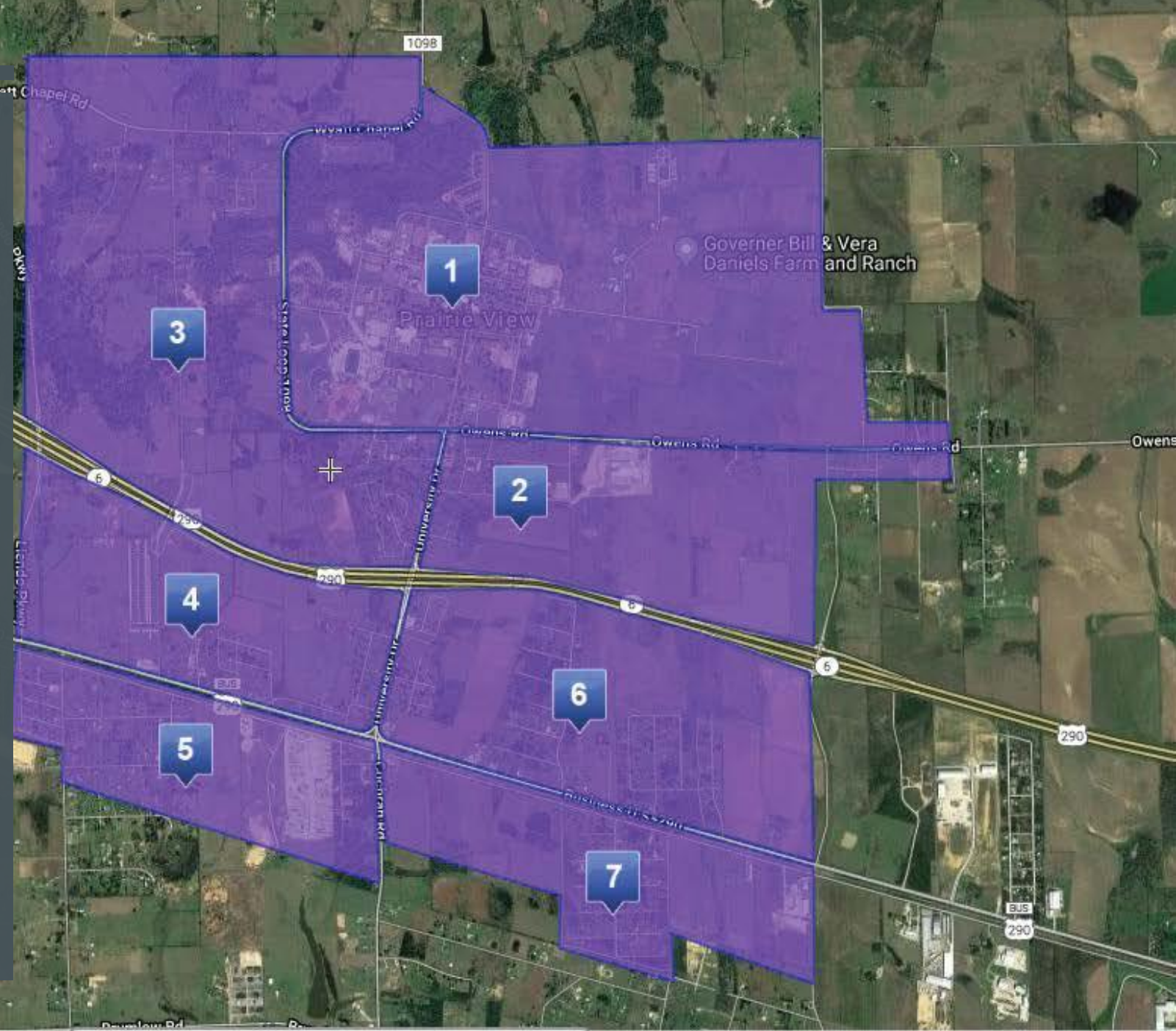
Prairie View Courts

---

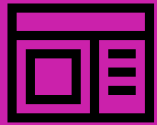
Prairie View Estates & Rosewood

# CITY OF PRAIRIEVIEW

- Map separated into 7 sections.



# HOW TO GET ON THE COMMUNITY ENGAGEMENT BOARD



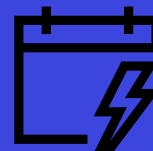
Fill out an application based on where you reside in the 7 divisions.



There will be an opening time and date so people have a chance to sign up for it.



Mayor & City Council will work together to choose people on the board.



Meetings once a month based on best time and date.



## DEFINED OUTCOMES:

- \* COMMUNITY ENGAGEMENT STRATEGIC PLAN
- \* IMPROVED COMMUNITY MORALE
- \* INCREASED UNDERSTANDING OF CONCERNS
- \* BETTER REPRESENTATION
- \* ENHANCED COMMUNICATION
- \* IMPROVED NEIGHBORHOOD RELATIONSHIPS