



FWC

Manatee with an entangled flipper.

## Join Us In Saving Our Wildlife One Line At A Time.



### SPONSORED BY:

Fish and Wildlife Conservation  
Save the Manatee Club  
Ocean Conservancy  
Tampa Bay Estuary Program  
Chicago Zoological Society  
U.S. Fish & Wildlife Service  
Mote Marine Laboratory  
International Game Fish Association  
Sea Grant  
Brevard County Natural Resources  
University of Central Florida  
National Oceanic & Atmospheric Administration –  
National Marine Fisheries Service  
Volusia County Environmental Management  
Dolphin Research Center  
Tampa Electric Company  
Marineland Dolphin Conservation Center

**Special thanks to Berkley & Berkley Conservation Institute**



Brevard County NR

Monofilament recycling bin

[www.fishinglinerecycling.org](http://www.fishinglinerecycling.org)



FWC

# Which Would You Rather Catch?

## Report Entangled Wildlife

- Report all entangled **marine** wildlife to the Florida Fish and Wildlife Conservation Commission at 1-888-404-3922.
- Report all entangled **land** animals or birds to your local rehabilitation hospital.
- Do not attempt to disentangle animals as it may result in injury to yourself and/or the animal.

## Report Dumping Of Marine Debris

- Call the U.S. Coast Guard at 1-800-424-8802, the Florida Fish and Wildlife Conservation Commission at 1-888-404-3922, or your local sheriff's office.



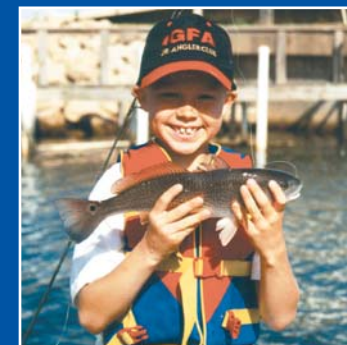
USCG

Coastal cleanup



Ocean Conservancy

Pelican trailing fishing line.



FWC



FWC



Mote Marine Lab

# DON'T LEAVE YOUR LINE BEHIND ♻️ RECYCLE YOUR OLD FISHING LINE

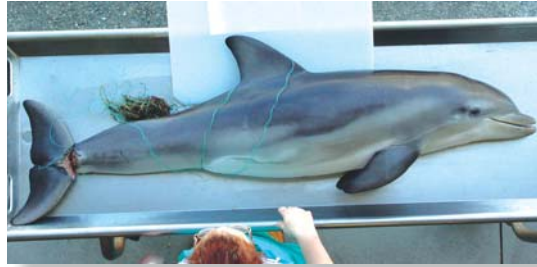
## The Problem

- Monofilament is a strand of strong, flexible plastic used for fishing, and the majority of it is non-degradable in water, lasting about 600 years!
- Monofilament thrown in garbage cans can still pose a threat when blown out by the wind or taken out by wildlife scavengers.
- Wildlife monofilament entanglements result in drowning, starvation, or loss of flipper or tails. Wildlife ingestion of fishing line often results in illness and death.
- Abandoned fishing line often poses a threat to divers who become entangled and drown. Boaters are all too familiar with the costly repairs required when discarded fishing line entangles their propellers.



FWC

*A sea turtle entangled in fishing line.*



Mote Marine Lab

*The dolphin calf's tail is severed by monofilament.*

## The Facts

- From 2000–2006, 58 dolphins stranded in Florida with monofilament entanglements or fishing hook ingestions.
- From 2000–2006, 298 sea turtles were entangled in fishing line in Florida.
- From 2000–2006, 26 manatees were rescued in Florida due to monofilament entanglements.
- Hundreds of fish, birds, and land animals are also entangled in monofilament every year in Florida.



Ocean Conservancy

*Wrapped boat propellers lead to costly repairs.*

## What Can You Do?

- Don't leave your line behind. If you have unwanted line, store it safely and securely until it can be placed in a recycling receptacle.
- Never leave fishing line unattended.
- Cast with care! Survey the area before you cast your line to avoid trees, utility lines, reefs, wildlife, and other anglers. Avoid casting with dolphins present – they will try and take your bait.
- Collect discarded line, debris, and other abandoned fishing gear and drop it off at the nearest outdoor recycling bin or local participating tackle shop.
- Maintain your line – check your terminal tackle frequently for frayed line.
- Participate in monofilament recycling programs and/or local cleanup efforts.
- Do not feed wildlife as it encourages animals to approach fishing boats and anglers.



[www.fishinglinerecycling.org](http://www.fishinglinerecycling.org)

BE PART OF THE SOLUTION ♻️ CLEAN UP FISHING LINE POLLUTION