



Office of Capital Improvements  
CIP Update  
September 14, 2022



# Office of Capital Improvements

- **Utilities Extension Projects (UEP) - Design, Permitting and Construction**
- **Parks GO BOND - Construction**
- **Major City Facilities - Design, Permitting and Construction**
- **Misc. Projects coordinating with Public Works, Utilities and Parks**
- **Misc. Projects assigned by the City Manager**
- **Estimated \$225 Million per year in Projects**



## Second Lift of Pavement Complete

**Legend**

**AVAILABILITY AND PAVING STATUS**

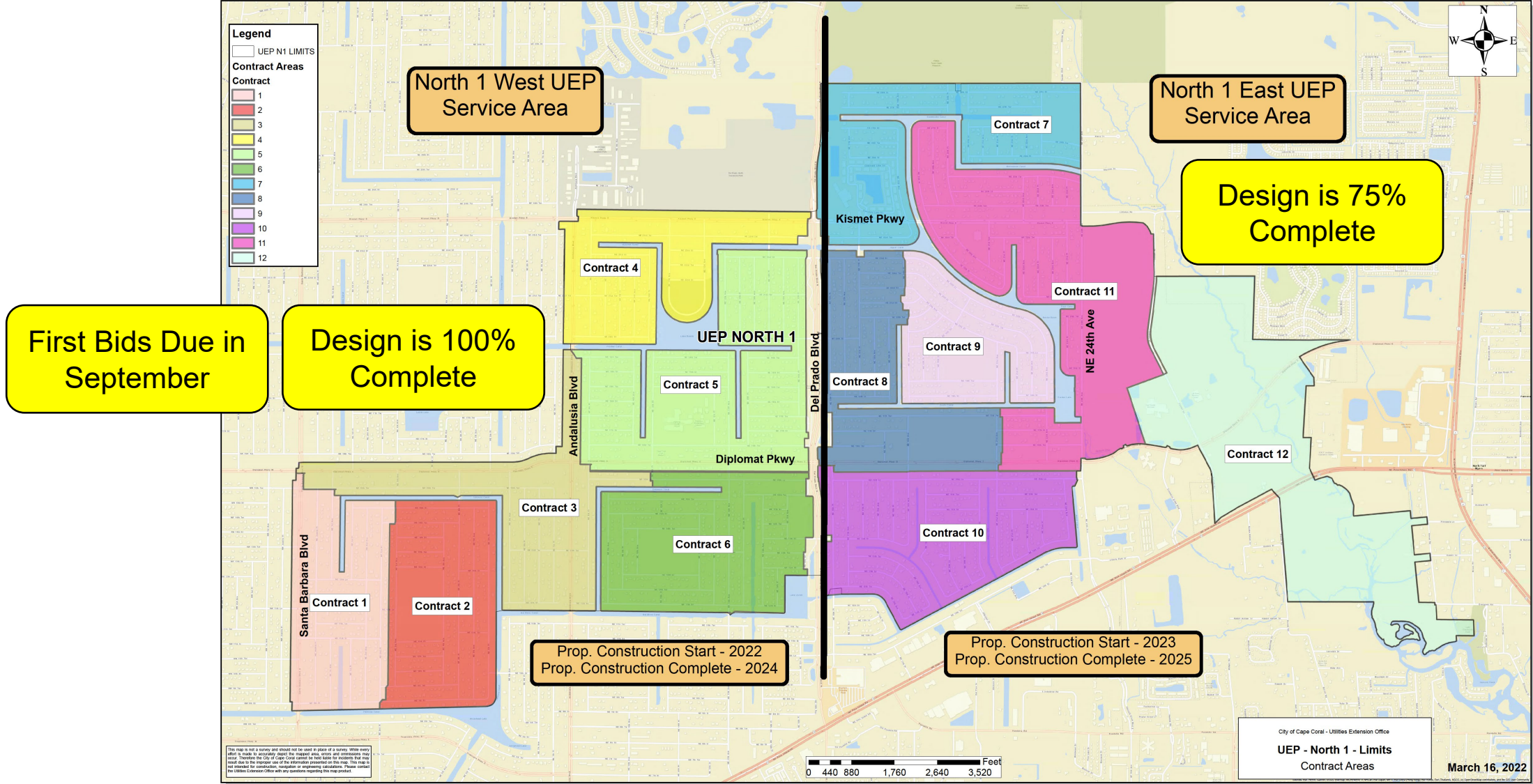
- AVAILABLE, FIRST LIFT COMPLETED
- AVAILABLE, SECOND LIFT COMPLETED
- AVAILABLE, SECOND LIFT IN PROCESS

**NORTH 2 UEP**

DRAFT: AUGUST 18, 2023  
SECOND LIFT PAVED: 99%

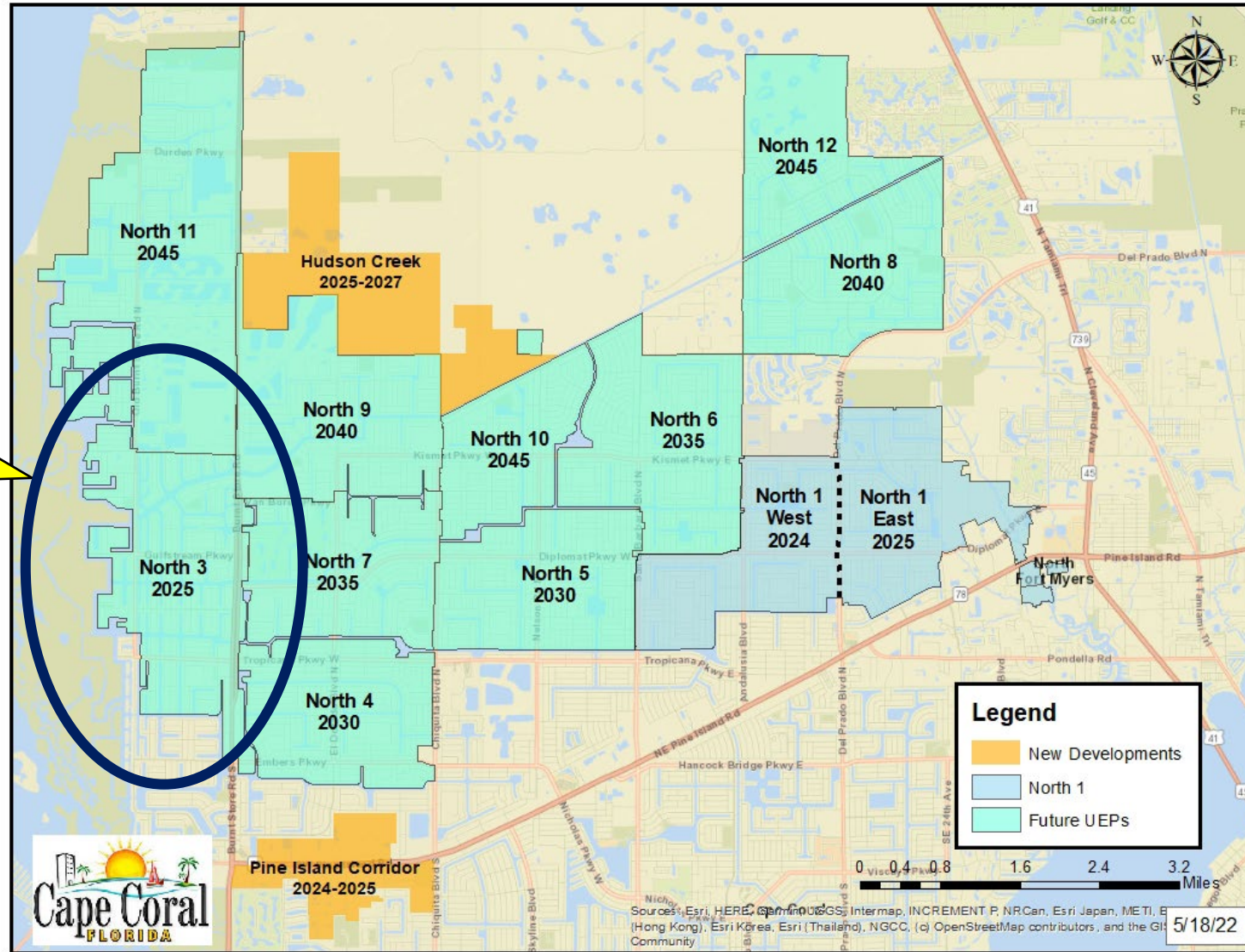


# North 1 UEP - Over \$300 Million



# North 3 UEP

Council Approved  
North 3 to be  
Constructed after  
North 1



RFP in Process  
for Estimated  
\$15 Million  
Design, Permitting  
and Bidding

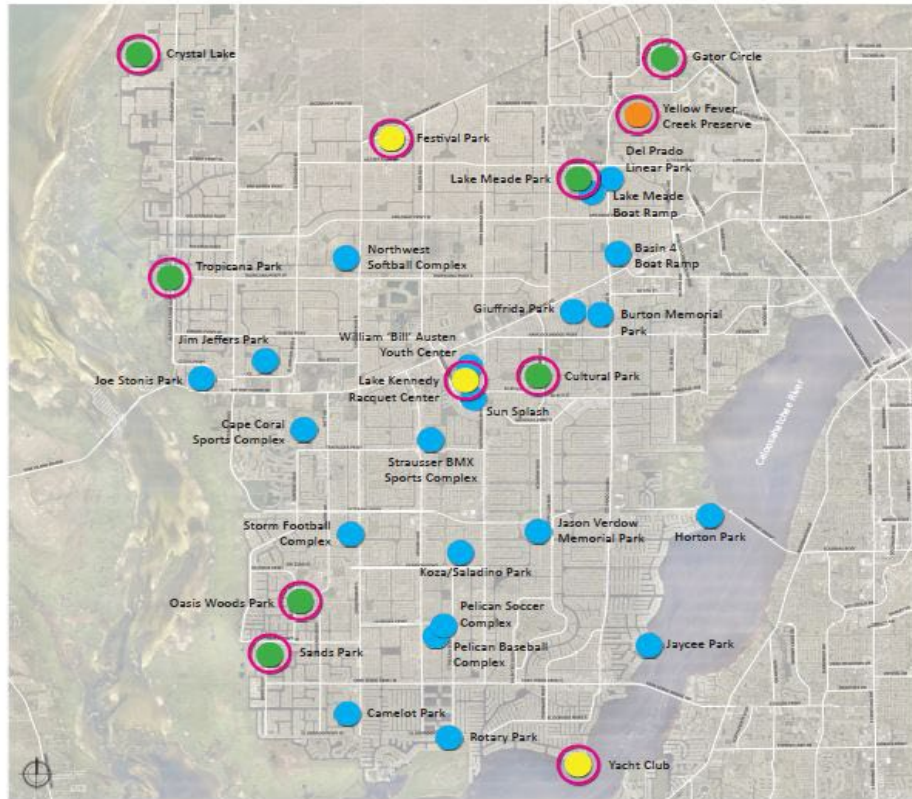


# Parks GO Bond Improvements

PW Coordinating the Design and Permitting / CIP Coordinating the Construction

## City of Cape Coral Parks and Recreation Master Plan

City-wide GO Bond Park Improvement Locations



The following conceptual plans are illustrative depictions of park improvements as identified in the 2016 City of Cape Coral Parks and Recreation Master Plan inclusive of budget level opinions of probable cost for each park type. Final plans for each specific park, should be developed in collaboration with local residents through an open, transparent and inclusive public design process.

### Typical Neighborhood Park (Gator Circle, Tropicana Park, Sands Park) amenities may include:

- Parking
- Restrooms
- Large Playground
- Multi-Use Paths and Trails (2); 10 foot wide
- 2-4 Pavilions (20x20')
- Tennis courts
- Pickleball courts
- Fitness stations
- Open Green Area
- Lighting
- Wi-Fi
- Multi-Use basketball Courts
- Dog Friendly (on leash) Amenities; dog drinking fountains and waste stations
- Grills/Fire Pits
- Canoe/Kayak Access (based on location)
- Shade Trees
- Hammocks/Benches
- Shuffleboard/Homesite Courts

### Typical Community Park (Lake Meade Park) amenities may include:

- Parking
- Restrooms
- Large Playground
- Multi-Use Paths and Trails (2); 10 foot wide
- 2-4 Pavilions (20x20') with Grills
- Tennis, Pickleball and Basketball Courts
- Fitness stations
- Open Green Area
- Lighting and Wi-Fi
- Dog Friendly (on leash) Amenities; dog drinking fountains and waste stations
- Moveable Outdoor Seating
- Canoe/Kayak Access (based on location)
- Shade Trees
- Hammocks/Benches
- Shuffleboard/Homesite Courts
- Indoor Recreation Center
- Food Truck Staging Area
- Dog Park
- Skate Park
- Equipment Rental (bikes, kayaks, fishing)

### Lake Kennedy Racquet Center amenities may include:

- Parking
- Restrooms
- Pro Shop
- Tennis Courts (10)
- Pickleball Courts (10)
- Covered Tournament Court
- Outdoor Dining Seating
- Multi-Use Path; 10 foot wide

### Legend:

- Site included in this Packet
- Future Neighborhood Parks
- Community Park Upgrades
- Future Environmental Parks
- Existing Park Upgrades



1. Cultural - Construction 95% Complete
2. Gator - Construction 95% Complete
3. Giuffrida - Construction 100% Complete
4. Del Prado - Construction 70% Complete
5. Sands – Construction 60% Complete
6. Coviello – Construction 25% Complete
7. Yellow Fever - Construction 5% Complete
8. Lake Kennedy – Bids Due in September
9. Festival Park - Proposed Bidding in Sept.
10. Tropicana - Permitting
11. Crystal Lake - Permitting
12. Lake Mead - Permitting
13. Yacht Club - Permitting

# Police Training Facility

- Site Relocation Savings of \$1.5 Million
- \$12 Million Estimated Construction Cost
- Proposed Construction Completion – Late 2023

**Schenkel-  
Shultz  
(Design is  
60%  
Complete)**



**Kaufmann-  
Lynn  
(CMAR)**



# Fire Training Facility

- \$9 Million Estimated Construction Cost
- Proposed Construction Completion – Late 2023

**Sweet  
Sparkman  
Architects  
(Design is  
90%  
Complete)**



**Wright  
Construction  
(CMAR)**



# Fire Station #12

- \$4.9 Million Budget
- Construction Completed On Time and Under Budget

Design by  
Sweet  
Sparkman  
Architects



Wright  
Construction  
(CMAR)





# **New Fleet Facility**

## **\$2 Million Study and Design Budget**



**Weston & Sampson**  
**\$331,200 Study is 75% Complete**



**\$25 Million Estimated  
Construction Cost**



# Facilities Master Plan



**1,260,000 SF**

**\$200,000 Budget**

**Negotiating with  
Stantec Consulting  
Services, Inc.**



# 140 Bridges Rehabilitation Program

## \$1 Million Per Year



**Volkert selected for Engineering Services**  
**Inspection and Prioritization for Bridge Rehab or Replacement**  
**75% Complete**

# 28 Weirs Rehabilitation Program with Utilities

## \$1 Million Per Year



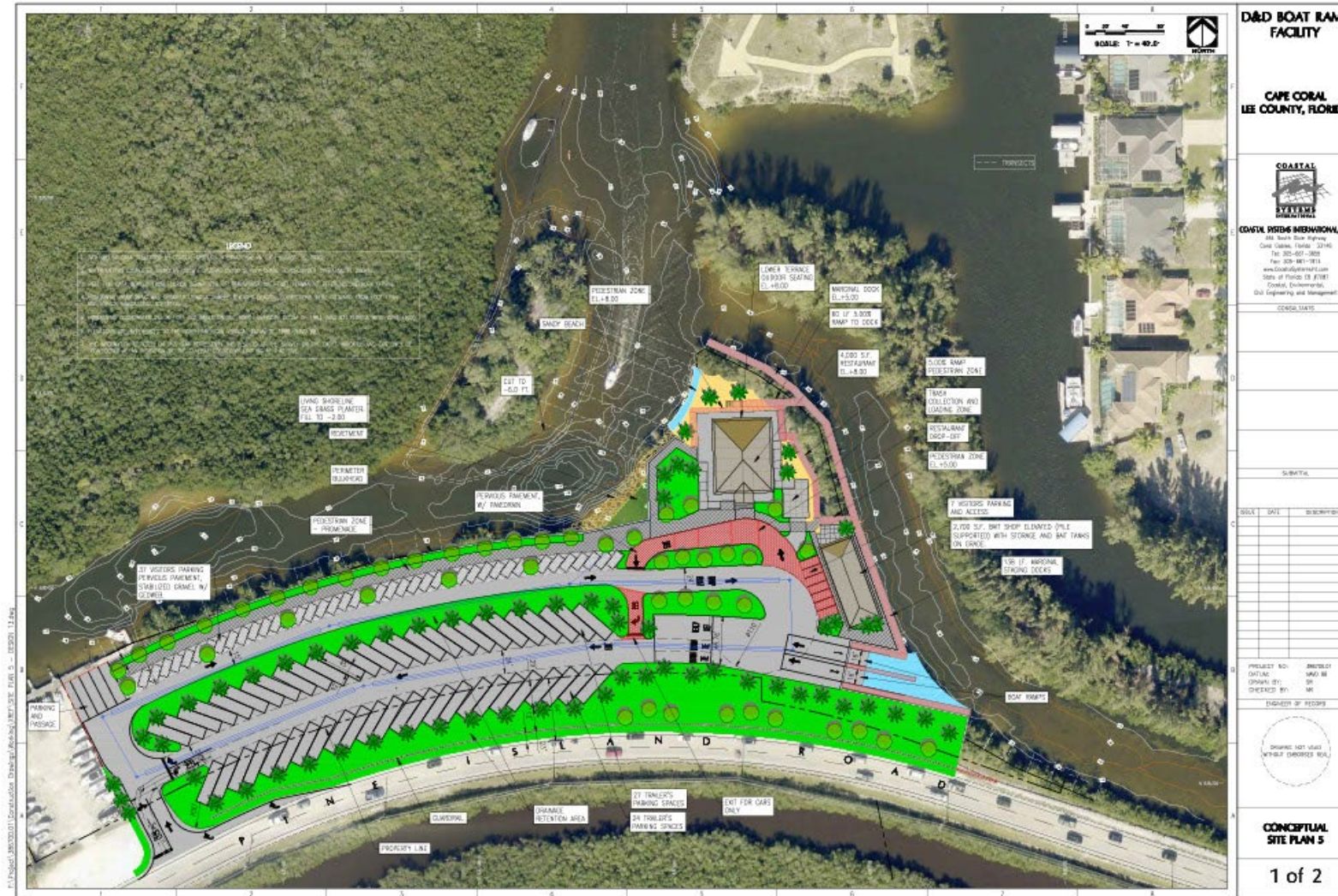
**AIM Engineering selected for Structural Engineering Services  
Inspection and Prioritization for Weir Rehab or Replacement  
75% Complete**



# D&D Boat Ramp

**\$304,000**  
Design by  
**AECOM** is  
**60%**  
Complete

**ROW**  
Interlocal  
Agreement  
with Lee  
County in  
Process



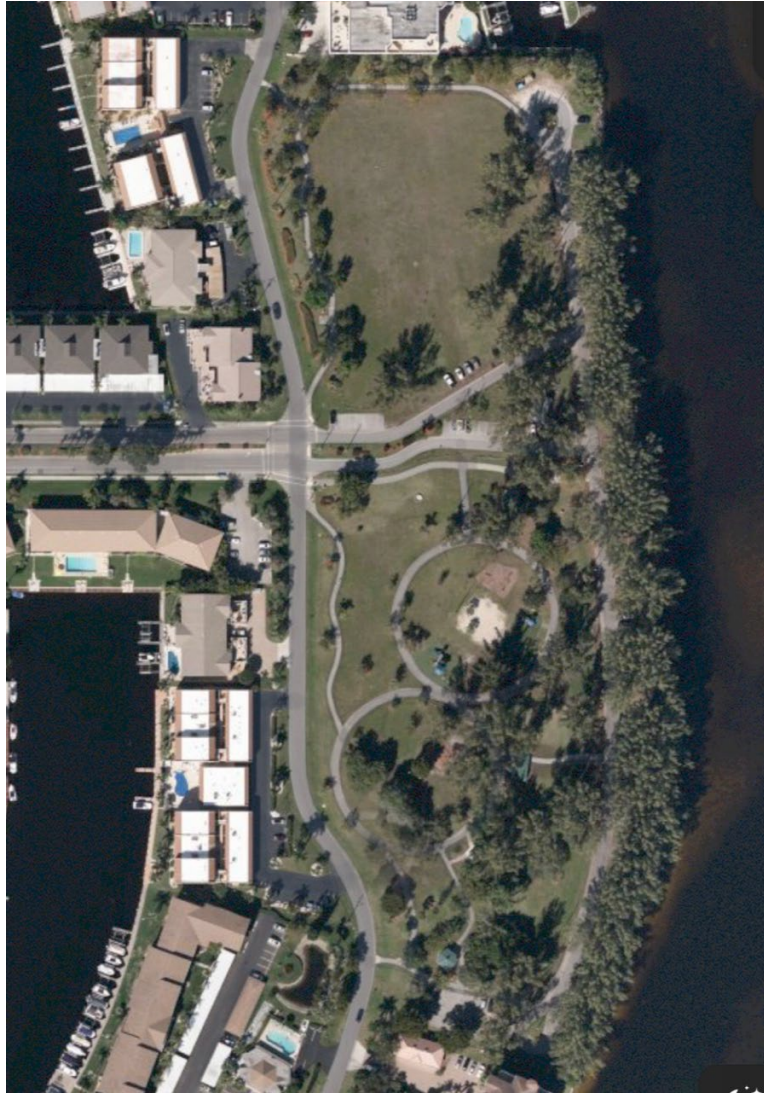
**\$10 Million**  
Estimated  
Construction  
Cost



# Jaycee Park Improvements

**Finalizing  
Negotiations with  
Pennoni and  
Associates for  
Conceptual Plans.**

**Design, Permitting  
and Bidding to  
follow.**



**\$350,000 Budget  
for Concept  
Plans, Design,  
Permitting and  
Bidding**

**\$2.5 Million  
Estimated  
Construction Cost**



# THANK YOU

Any Questions?

