



Yacht Club Master Plan Discussion

Committee of the Whole - 11/08/23



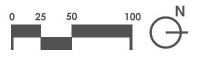
PROGRAM DIAGRAM A

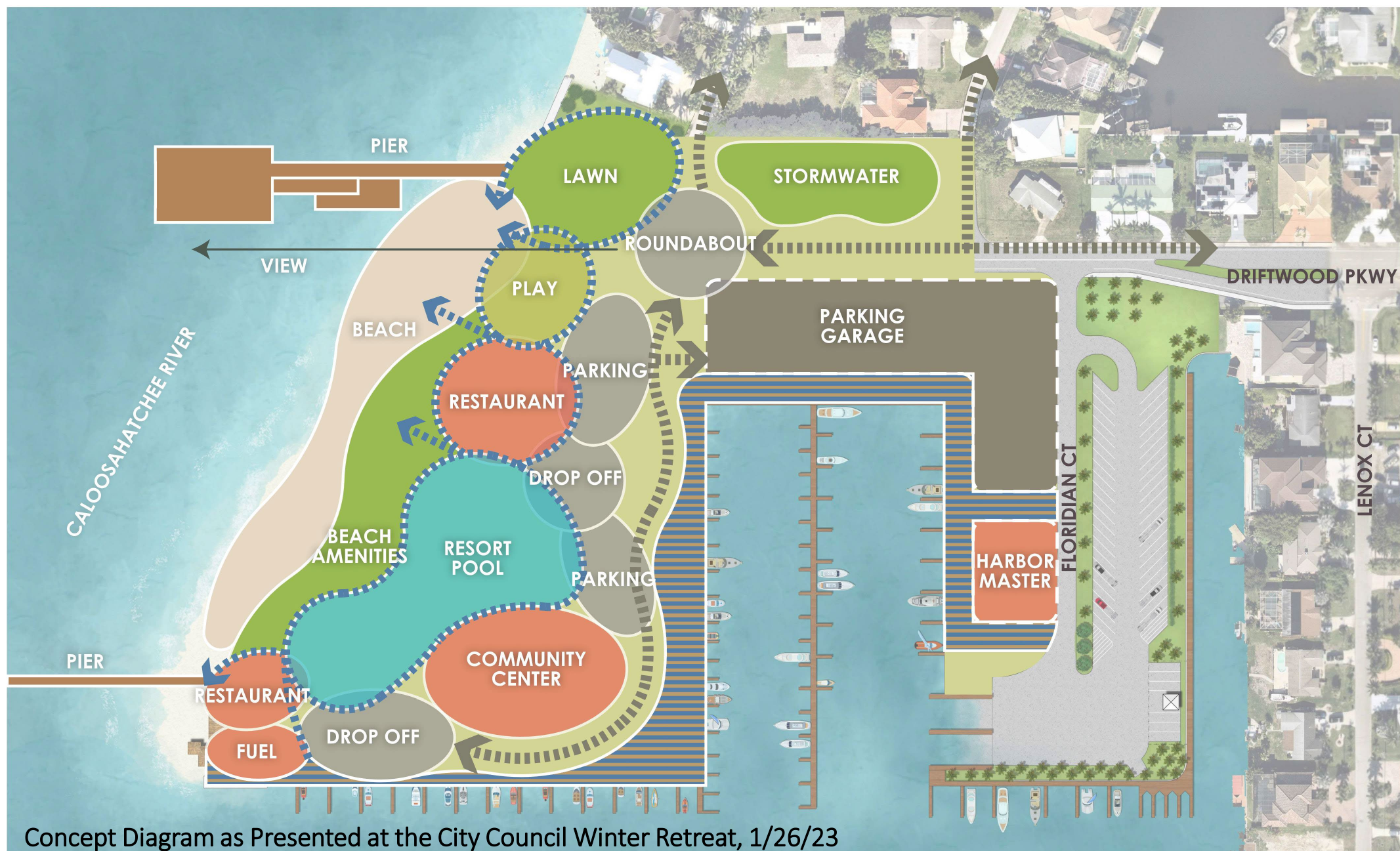
JANUARY 2023 • CONTACT: JAMES PANKONIN PLA (941)-379-7620

YACHT CLUB PARK
CAPE CORAL, FLORIDA



Kimley»Horn





Concept Diagram as Presented at the City Council Winter Retreat, 1/26/23

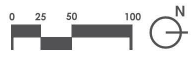
PROGRAM DIAGRAM E

JANUARY 2023 • CONTACT: JAMES PANKONIN PLA (941)-379-7620

YACHT CLUB PARK
CAPE CORAL, FLORIDA

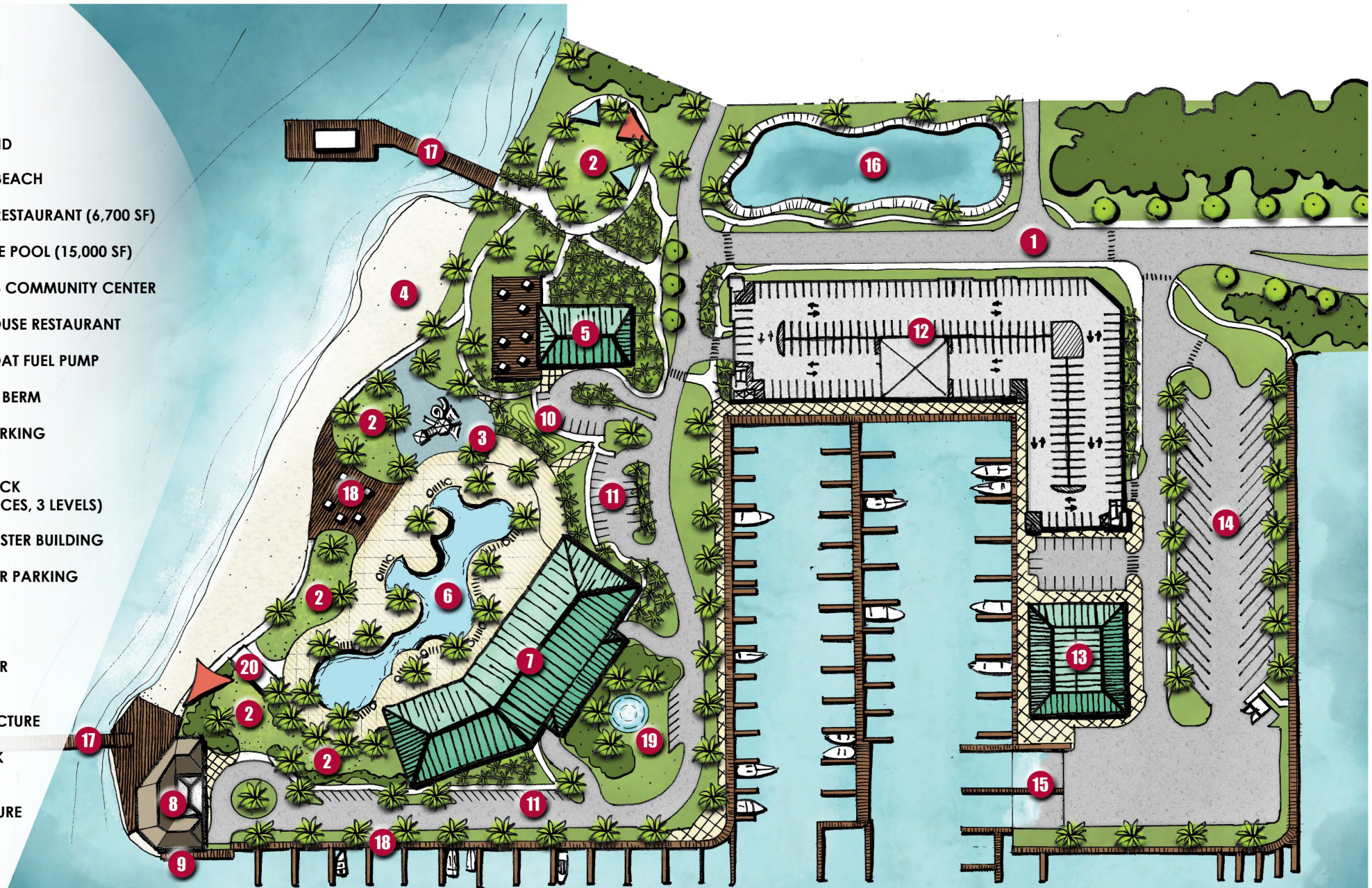


Kimley»Horn



KEY

- 1 ENTRY DRIVE
- 2 LAWN
- 3 PLAYGROUND
- 4 EXPANDED BEACH
- 5 PROPOSED RESTAURANT (6,700 SF)
- 6 RESORT STYLE POOL (15,000 SF)
- 7 YACHT CLUB COMMUNITY CENTER
- 8 THE BOATHOUSE RESTAURANT
- 9 EXISTING BOAT FUEL PUMP
- 10 LANDSCAPE BERM
- 11 SURFACE PARKING (72 SPACES)
- 12 PARKING DECK (500 +/- SPACES, 3 LEVELS)
- 13 HARBOR MASTER BUILDING
- 14 BOAT TRAILER PARKING (39 SPACES)
- 15 BOAT RAMP
- 16 STORMWATER
- 17 PIER WITH SHADE STRUCTURE
- 18 BOARDWALK
- 19 FOUNTAIN / WATER FEATURE
- 20 RESTROOM



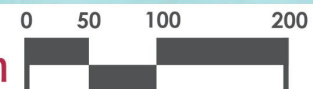
CONCEPT 1

NOVEMBER 2023 • CONTACT: JAMES PANKONIN, PLA (941)-379-7620

YACHT CLUB PARK
CAPE CORAL, FLORIDA

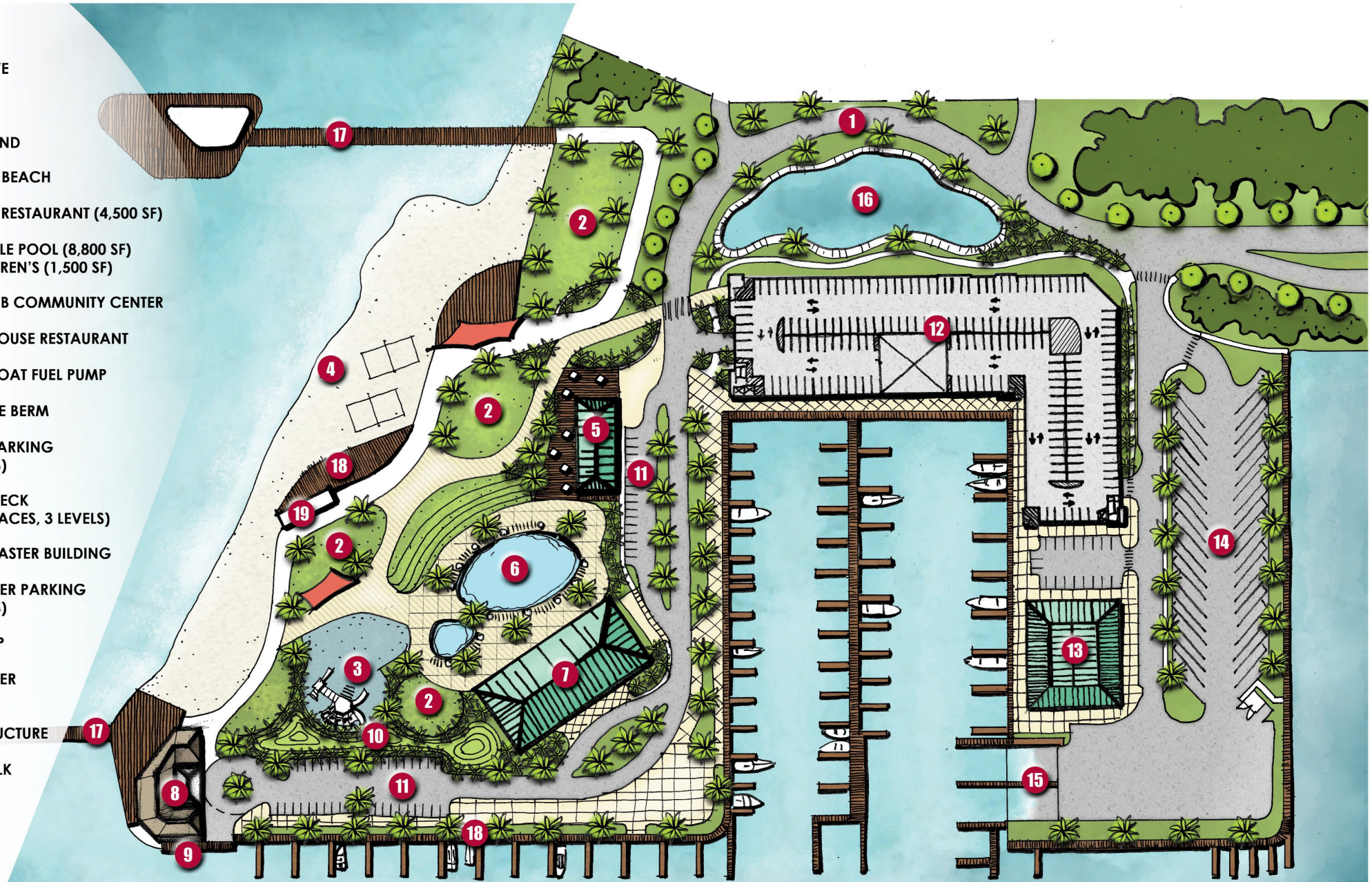


Kimley»Horn



KEY

- 1 ENTRY DRIVE
- 2 LAWN
- 3 PLAYGROUND
- 4 EXPANDED BEACH
- 5 PROPOSED RESTAURANT (4,500 SF)
- 6 RESORT STYLE POOL (8,800 SF) AND CHILDREN'S (1,500 SF)
- 7 YACHT CLUB COMMUNITY CENTER
- 8 THE BOATHOUSE RESTAURANT
- 9 EXISTING BOAT FUEL PUMP
- 10 LANDSCAPE BERM
- 11 SURFACE PARKING (74 SPACES)
- 12 PARKING DECK (500 +/- SPACES, 3 LEVELS)
- 13 HARBOR MASTER BUILDING
- 14 BOAT TRAILER PARKING (39 SPACES)
- 15 BOAT RAMP
- 16 STORMWATER
- 17 PIER WITH SHADE STRUCTURE
- 18 BOARDWALK
- 19 RESTROOM



CONCEPT 2

NOVEMBER 2023 • CONTACT: JAMES PANKONIN, PLA (941)-379-7620

YACHT CLUB PARK
CAPE CORAL, FLORIDA



Kimley»Horn

0 50 100 200





Questions?

Kimley»Horn