



# U.S. AIDS TO NAVIGATION SYSTEM

## on navigable waters except Western Rivers

### LATERAL SYSTEM AS SEEN ENTERING FROM SEAWARD

<p><b>PORT SIDE ODD NUMBERED AIDS</b></p> <p>GREEN LIGHT ONLY</p> <p>FLASHING (2) </p> <p>FLASHING </p> <p>OCCULTING </p> <p>QUICK FLASHING </p> <p>ISO </p> <p><b>1</b> LIGHT <i>1" FI G 6s</i></p> <p><b>9</b> LIGHTED BUOY <i>G "9" FI G 4s</i></p> <p><b>9</b> CAN <i>G "9"</i></p> <p><b>5</b> DAYBEACON <i>G "5"</i></p>	<p><b>PREFERRED CHANNEL NO NUMBERS - MAY BE LETTERED</b></p> <p>PREFERRED CHANNEL TO STARBOARD TOPMOST BAND GREEN</p> <p>GREEN LIGHT ONLY</p> <p>COMPOSITE GROUP FLASHING (2+1) </p> <p><b>A</b> LIGHTED BUOY <i>GR "A" FI (2+1) G 6s</i></p> <p><b>U</b> CAN <i>GR "U"</i></p> <p><b>S</b> CAN <i>GR "S"</i></p>	<p><b>PREFERRED CHANNEL NO NUMBERS - MAY BE LETTERED</b></p> <p>PREFERRED CHANNEL TO PORT TOPMOST BAND RED</p> <p>RED LIGHT ONLY</p> <p>COMPOSITE GROUP FLASHING (2+1) </p> <p><b>B</b> LIGHTED BUOY <i>RG "B" FI (2+1) R 6s</i></p> <p><b>C</b> NUN <i>RG "C" N "C"</i></p> <p><b>G</b> DAYBEACON <i>RG "G"</i></p>	<p><b>STARBOARD SIDE EVEN NUMBERED AIDS</b></p> <p>RED LIGHT ONLY</p> <p>FLASHING (2) </p> <p>FLASHING </p> <p>OCCULTING </p> <p>QUICK FLASHING </p> <p>ISO </p> <p><b>2</b> LIGHT <i>2" FI R 6s</i></p> <p><b>8</b> LIGHTED BUOY <i>R "8" FI R 4s</i></p> <p><b>6</b> NUN <i>R "6" N "6"</i></p> <p><b>2</b> DAYBEACON <i>R "2"</i></p>
--	---	--	--

### AIDS TO NAVIGATION HAVING NO LATERAL SIGNIFICANCE

<p><b>ISOLATED DANGER NO NUMBERS - MAY BE LETTERED</b></p> <p>WHITE LIGHT ONLY</p> <p><i>FI (2) 5s</i> </p> <p><b>A</b> LIGHTED <i>BR "A" FI (2) 5s</i></p> <p><b>C</b> UNLIGHTED <i>BR "C"</i></p>	<p><b>SAFE WATER NO NUMBERS - MAY BE LETTERED</b></p> <p>WHITE LIGHT ONLY MORSE CODE</p> <p><i>Mo (A)</i> </p> <p><b>A</b> MR <i>RW "A"</i></p> <p><b>B</b> SPHERICAL <i>RW SP "B"</i></p> <p><b>N</b> UNLIGHTED AND/OR SOUND <i>RW "N"</i></p>
<p><b>DAYBOARDS - MAY BE LETTERED</b></p> <p>WHITE LIGHT ONLY</p> <p><b>NR</b> </p> <p><b>NG</b> </p> <p><b>NB</b> </p> <p><i>RW Bn</i> <i>GW Bn</i> <i>BW Bn</i></p>	<p><b>RANGE DAYBOARDS - MAY BE LETTERED</b></p> <p><b>KGW</b> <b>KWG</b> <b>KWB</b> <b>KBW</b> <b>KWR</b> <b>KRW</b> <b>KRB</b> <b>KBR</b> <b>KGB</b> <b>KBG</b> <b>KGR</b> <b>KRG</b></p>
<p><b>SPECIAL MARKS - MAY BE LETTERED</b></p> <p>YELLOW LIGHT ONLY</p> <p>FIXED FLASHING </p> <p><b>A</b> UNLIGHTED <i>C "A"</i></p> <p><b>C</b> UNLIGHTED <i>N "C"</i></p> <p><b>A</b> UNLIGHTED <i>Y "A" Bn</i></p> <p><b>B</b> LIGHTED <i>Y "B" FI</i></p> <p>SHAPE OPTIONAL—BUT SELECTED TO BE APPROPRIATE FOR THE POSITION OF THE MARK IN RELATION TO THE NAVIGABLE WATERWAY AND THE DIRECTION OF BUOYAGE.</p>	

Aids to Navigation marking the Intracoastal Waterway (ICW) display unique yellow symbols to distinguish them from aids marking other waters. Yellow triangles indicate aids should be passed by keeping them on the starboard (right) hand of the vessel. Yellow squares indicate aids should be passed by keeping them on the port (left) hand of the vessel. A yellow horizontal band provides no lateral information, but simply identifies aids as marking the ICW.

**TYPICAL INFORMATION AND REGULATORY MARKS**

INFORMATION AND REGULATORY MARKERS

WHEN LIGHTED, INFORMATION AND REGULATORY MARKS MAY DISPLAY ANY WHITE LIGHT RHYTHM EXCEPT QUICK FLASHING, Mo(A), AND FLASHING (2)

MOORING BUOY  
WHITE WITH BLUE BAND  
MAY SHOW WHITE REFLECTOR OR LIGHT

SWIM AREA  
EXPLANATION MAY BE PLACED OUTSIDE THE CROSSED DIAMOND SHAPE, SUCH AS DAM, RAPIDS, SWIM AREA, ETC.

BOAT EXCLUSION AREA

ROCK DANGER  
THE NATURE OF DANGER MAY BE INDICATED INSIDE THE DIAMOND SHAPE, SUCH AS ROCK, WRECK, SHOAL, DAM, ETC.

CONTROLLED AREA  
TYPE OF CONTROL IS INDICATED IN THE CIRCLE, SUCH AS SLOW, NO WAKE, ANCHORING, ETC.

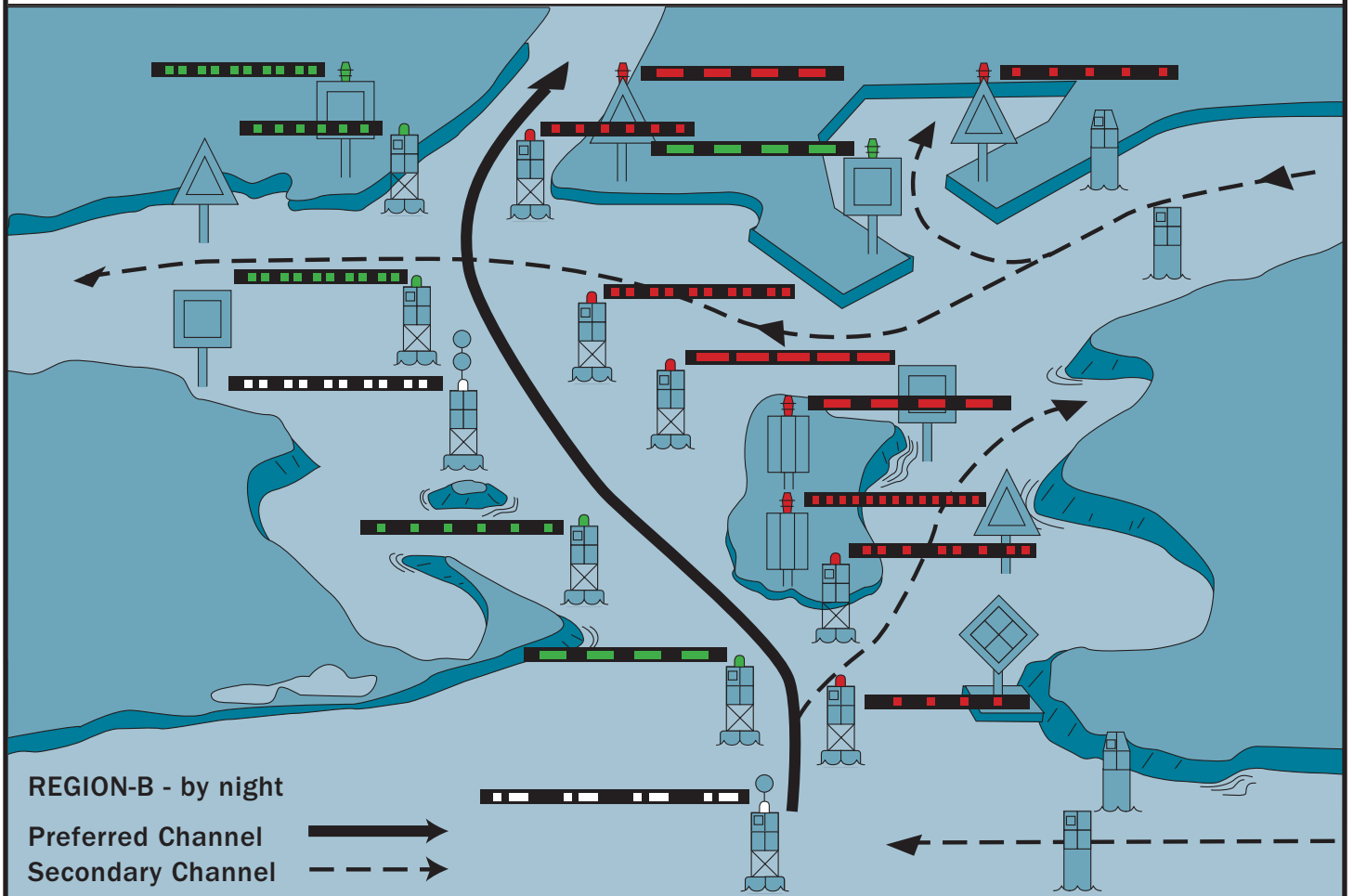
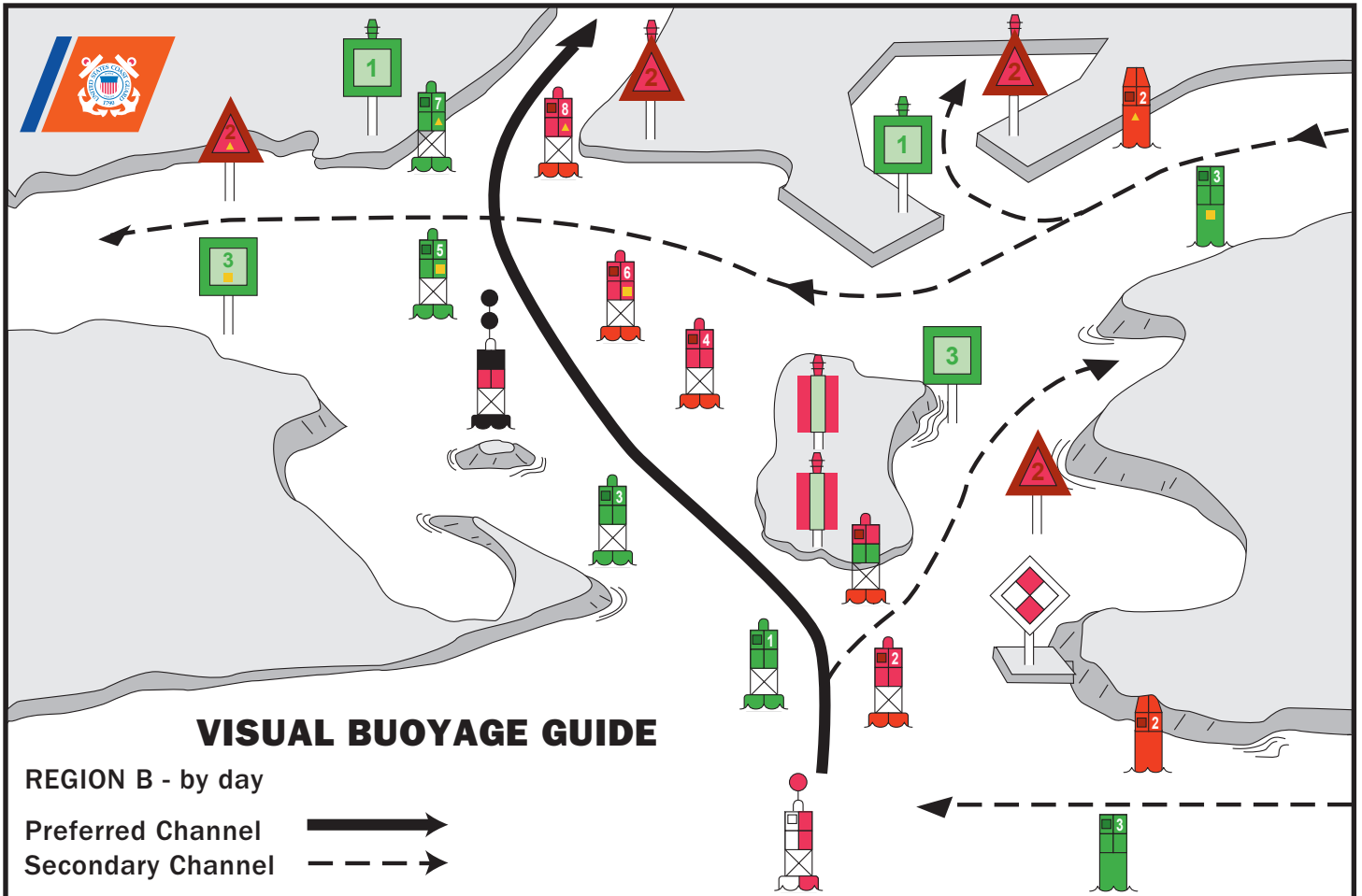
INFORMATION  
FOR DISPLAYING INFORMATION SUCH AS DIRECTIONS, DISTANCES, LOCATIONS, ETC.

BUOY USED TO DISPLAY REGULATORY MARKERS

MAY SHOW WHITE LIGHT MAY BE LETTERED

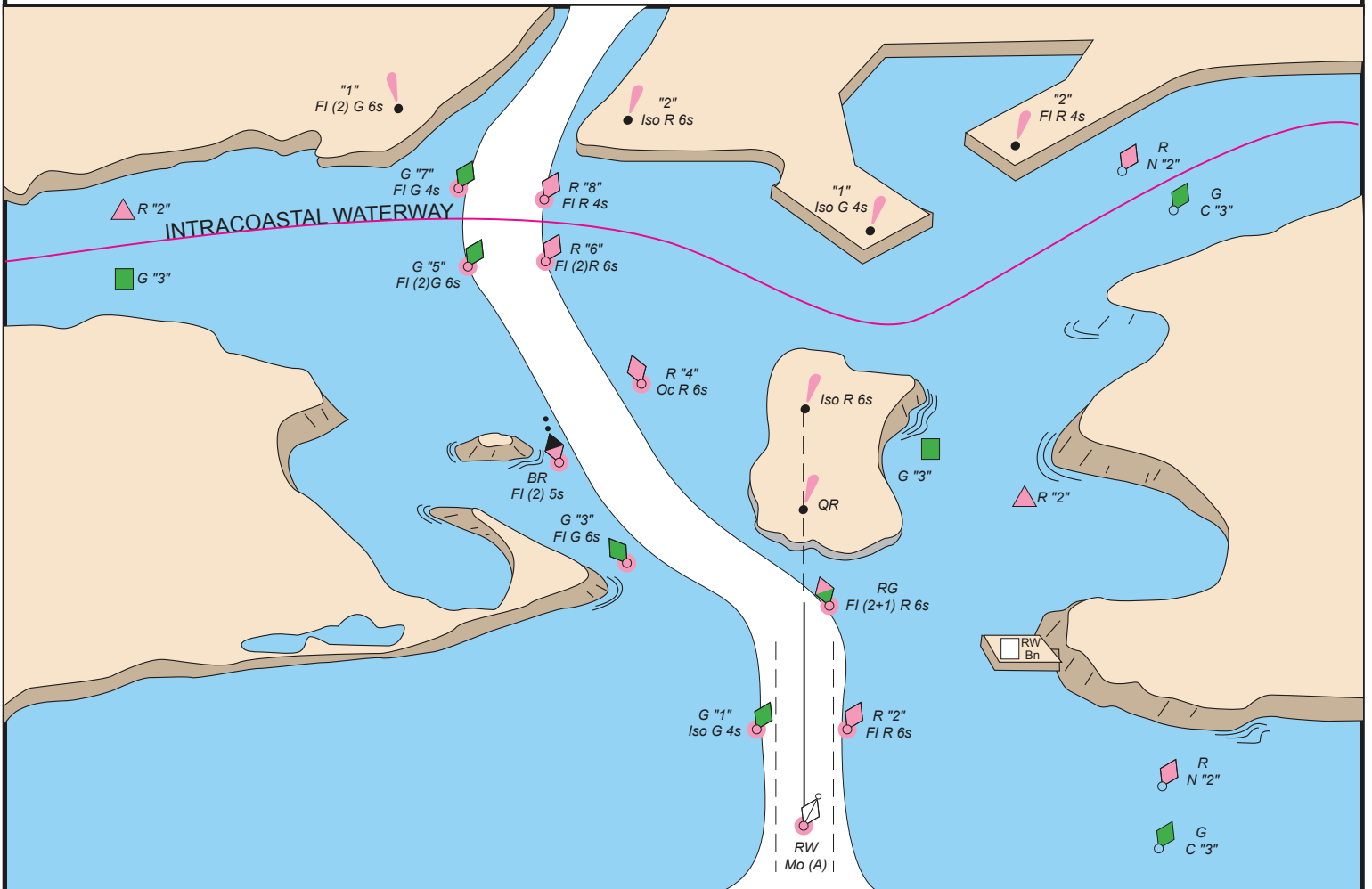
DANGER *NW*

*W Bn*





# FICTITIOUS NAUTICAL CHART





# U.S. AIDS TO NAVIGATION SYSTEM

## on the Western River System

### AS SEEN ENTERING FROM SEAWARD

<p><b>PORT SIDE</b> OR RIGHT DESCENDING BANK</p> <p>GREEN OR WHITE LIGHTS</p> <p>FLASHING ISO</p> <p>LIGHT    LIGHTED BUOY    CAN</p> <p>SG    CNG</p> <p>PASSING DAYBEACON    CROSSING DAYBEACON</p> <p>176.9 MILE BOARD</p>	<p><b>PREFERRED CHANNEL</b> MARK JUNCTIONS AND OBSTRUCTIONS COMPOSITE GROUP FLASHING (2+1)</p> <p>PREFERRED CHANNEL TO STARBOARD TOPMOST BAND GREEN FI (2+1) G</p> <p>PREFERRED CHANNEL TO PORT TOPMOST BAND RED FI (2+1) R</p> <p>JG    JR</p> <p><b>DAYBOARDS HAVING NO LATERAL SIGNIFICANCE</b></p> <p>MAY BE LETTERED    WHITE LIGHT ONLY</p> <p>NB</p> <p>123.5 MILE BOARD</p>	<p><b>STARBOARD SIDE</b> OR LEFT DESCENDING BANK</p> <p>RED OR WHITE LIGHTS</p> <p>FLASHING (2) ISO</p> <p>LIGHT    LIGHTED BUOY    NUN</p> <p>MAY BE LIGHTED    TR    CNR</p> <p>PASSING DAYBEACON    CROSSING DAYBEACON</p> <p>123.5 MILE BOARD</p>
---	---	---

**SPECIAL MARKS--MAYBE LETTERED**

UNLIGHTED    LIGHTED

SHAPE: OPTIONAL--BUT SELECTED TO BE APPROPRIATE FOR THE POSITION OF THE MARK IN RELATION TO THE NAVIGABLE WATERWAY AND THE DIRECTION OF BUOYAGE.

YELLOW LIGHT ONLY  
FIXED FLASHING

MOORING BUOY  
WHITE WITH BLUE BAND  
MAY SHOW WHITE REFLECTOR OR LIGHT

**TYPICAL INFORMATION AND REGULATORY MARKS**  
INFORMATION AND REGULATORY MARKERS

WHEN LIGHTED, INFORMATION AND REGULATORY MARKS MAY DISPLAY ANY LIGHT RHYTHM EXCEPT QUICK FLASHING, Mo(a) AND FLASHING (2)

NW WHITE LIGHT ONLY

BOAT EXCLUSION AREA    DANGER    CONTROLLED AREA

SWIM AREA

EXPLANATION MAY BE PLACED OUTSIDE THE CROSSED DIAMOND SHAPE, SUCH AS DAM, RAPIDS, SWIM AREA, ETC.

THE NATURE OF DANGER MAY BE INDICATED INSIDE THE DIAMOND SHAPE, SUCH AS ROCK, WRECK, SHOAL, DAM, ETC.

TYPE OF CONTROL IS INDICATED IN THE CIRCLE, SUCH AS SLOW, NO WAKE, ANCHORING, ETC.

MULLET LAKE  
BLACK RIVER    INFORMATION

FOR DISPLAYING INFORMATION SUCH AS DIRECTIONS, DISTANCES, LOCATIONS, ETC.

BUOY USED TO DISPLAY REGULATORY MARKERS

MAY SHOW WHITE LIGHT  
MAY BE LETTERED

**STATE WATERS**

INLAND (STATE) WATERS OBSTRUCTION MARK  
MAY SHOW WHITE REFLECTOR OR QUICK FLASHING WHITE LIGHT

BLACK-STRIPED WHITE BUOY

Used to indicate an obstruction to navigation, extends from the nearest shore to the buoy. This means "do not pass between the buoy and the nearest shore." This aid is replacing the red and white striped buoy within the USWMS, but cannot be used until all red and white striped buoys on a waterway have been replaced.