



City of  
Barnesville

# Drinking Water Treatment Plant

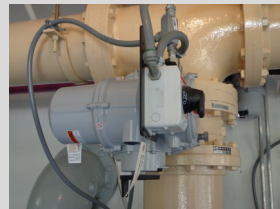
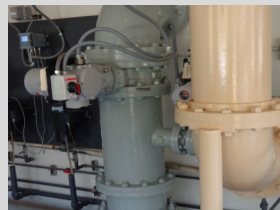
The WTP currently serves over 6,700 customers in Barnesville, Milner, and Lamar County.

## WTP Total Property Area

23 acres (Plant) - 190.62 (Reservoir and Land)

### Notable Dates

- 1955** 1 MG concrete storage tank constructed on Hog Mountain.
- 1975** Plant Expansion included addition of filters 3&4.
- 1980** New high service building with 3 verticle turbine pumps
- 1990** Microfloc Trident package plant and new laboratory built. Expanded plant capacity to 6.0 MGD of drinking water.
- 1994** The flood of '94 destroyed the reservoir dam.
- 1995** Reservoir repaired and expanded to over 160 acres. New raw water pump station installed.
- 2001** Switched to Bleach from Chlorine gas for drinking water disinfection.
- 2013** Major plant renovations completed including rehab of 4 sand filters, 4 new filter consoles, resurfacing and coating of pipes in pipe gallery, new chemical feed systems, new com puter monitoring system (SCADA), and a new 200 HP high service pump.



## New and Improved in 2013!

### Filtration

- All 4 conventional filters were rehabbed.
- Four new filter consoles installed.

### Chemical Feed Systems

- Brand new stainless steel pre-lime feed system installed for Iron and Manganese removal.
- New Ferric Chloride feed system with spill containment.

### Pumping

- 200 HP high service pump with GA Industries check valve installed.
- Motor Control Center completely replaced with new cabinets and components.

### Pipe Gallery

- All pipes resurfaced and coated with a durable two part epoxy.
- All new valves with electric Rotork actuators.

### SCADA

- New SCADA cabinet, computer, and RTU's.
- New 42" LCD display for plant monitoring.

Proudly Operated  
and Maintained by:



[www.esginc.net](http://www.esginc.net)

## Key Personnel:

Jason Shirey - Public Works and Utilities Director

Brandon Lewis - Project manager

Christy Allison - Water Class I Operator and Lab Analyst

Chuck Chute - Water Class II Operator